

Does Austin have a solar program?

As more businesses consider adopting solar, community-owned Austin Energy has developed its set of incentives to help. This fits with the city's target of communitywide net-zero greenhouse emissions by 2040.

Does Austin Energy offer a solar rebate?

Austin Energy provides solar education to help you become an informed shopper and offers a rebate to help you with your purchase. Learn more about the Value of Solar (VoS) Rate You can earn a \$2,500 rebate by completing our solar education course and installing a qualifying solar photovoltaic (PV) system on your home.

Why do Austinites use solar power?

Austinites are embracing solar as a clean, green, alternative source of power. When you use clean, renewable solar power for your home or business you help reduce Austin's carbon footprint and help protect the environment. Earn 9.91 cents/kWh in Value of Solar Bill Credits that apply to the electric charges on your utility bill.

What tax benefits are available for solar installations?

Explore tax benefits for solar installations. Earn rebates from Austin Energy that can help with the installation. Earn up to 9.91 cents/kWh in Value of Solar Bill Credits that apply to the electric charges on your utility bill.

Does Austin Energy use a machine translation tool?

As a department of the City of Austin, Austin Energy uses an independent, online tool to provide automated (machine) translations on our websites. As with any machine translation, context and accuracy cannot be guaranteed.

AUSTIN ENERGY SOLAR PROGRAM TSRF



SOLAR PHOTOVOLTAIC (PV) SMALL COMMERCIAL AND NONPROFIT CAPACITY-BASED INCENTIVE (CBI) PROGRAM GUIDELINES These guidelines govern the procedures and qualifications for Austin Energy 's Solar PV Small Commercial and Nonprofit CBI Program and are subject to change. Applications that do not meet these requirements may be ???



??? Austin Energy publishes power procurement price(s) to be paid for a set period of years to developers or customers (whoever owns the system) to projects that meet program criteria ???Purchased Energy expands Community Solar Program offering, lowers portfolio costs, and leads to lower costs to all customers. ??? System could be owned by



AUSTIN ENERGY SOLAR PROGRAM CONTRACTOR HANDBOOK Initials_____ Date _____ Austin Energy Solar Incentive and Rebate Program Contractor Handbook effective 10/28/2024 Page 1 To become and remain a participating contractor with Austin Energy's Solar Programs, a contractor must meet the registration requirements and follow the policies outlined in

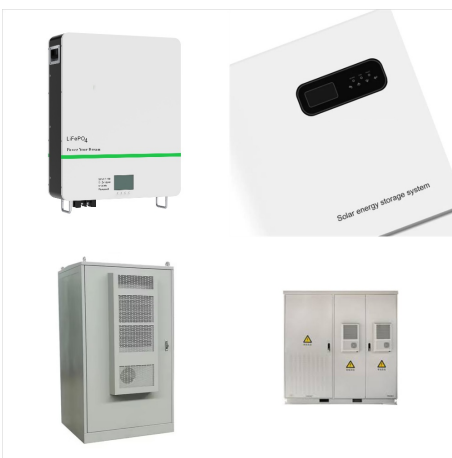
AUSTIN ENERGY SOLAR PROGRAM TSRF



Peak sun hours are significant because they refer to the intensity of sunlight that a given location receives. This in turn affects how much energy a solar PV system or solar array can produce in that same area. One peak sun hour is usually defined as an hour of sunlight that offers 1,000 watts of photovoltaic power per square meter. In general



TSRF, or Total Solar Resource Fraction, is the amount of sunlight the measured area will receive over the year more scientific terms, it is the ratio of insolation available accounting for both shading and Tilt and Orientation Factor (TOF), compared to the total insolation available at a given location at the optimum tilt and orientation and with no shading.



installation of solar electric systems on 20 of its facilities in the Austin Energy service territory, in an amount not to exceed \$388,776 and approve issuance of a five-year performance-based incentive to Public Storage Orangeco Inc., in a total amount not to exceed \$1,024,185.28.

AUSTIN ENERGY SOLAR PROGRAM TSRF



Trade allies must submit a solar resource evaluation taken from the point on the array with the lowest TSRF using an approved site analysis tool. Remote Shading Analysis ??? Energy Trust requires that each plane of the array(s) have a TSRF of 80 percent or greater to be eligible for incentives. Trade allies must submit a solar resource



The TSRF or Total Solar Resource Fraction, tells them how much available sunlight will hit your roof. This roof will soak up 81% of the available sunlight. The magic number they are looking for, in order to qualify for incentives, is a TSRF of 75% or greater.



Austin Energy's Community Solar program is at capacity and not currently accepting new subscribers. Fill out the form below or contact Customer Care at 512-494-9400 to be added to the waiting list. Community Solar Is Green-e(R) Energy Certified. Austin Energy's Community Solar program is Green-e Energy certified and meets the environmental and

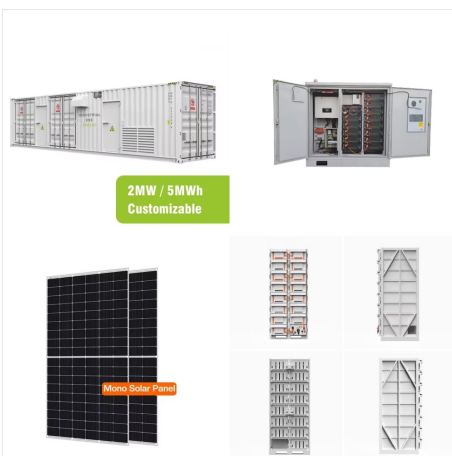
AUSTIN ENERGY SOLAR PROGRAM TSRF



These guidelines govern the procedures and qualifications for Austin Energy's Solar PV Multifamily CBI Program. Participating Solar Contractors are listed on Austin Energy's Solar. The system must be sited in a location where a minimum average of 75% of the total solar resource fraction (TSRF) is available to the system. An on-site



Total Solar Resource Fraction (TSRF). TSRF is the ratio of insolation available accounting for both shading and TOF, compared to the total insolation available at a given location at the optimum tilt and orientation and with no shading. TSRF is also expressed in percent, according to the following equation: $TSRF = \text{Solar Access} * \text{TOF}$



This must be taken account on the TSRF measurement because heavily shaded areas cannot produce as much solar energy as non-shaded areas. Atmospheric Conditions. Weather patterns like regular rain, snow, or clouds will reduce the amount of solar energy that the panels are exposed to. Solar Panel Efficiency

AUSTIN ENERGY SOLAR PROGRAM TSRF



SOLAR PHOTOVOLTAIC (PV) COMMERCIAL 5-YEAR PERFORMANCE-BASED INCENTIVE (PBI) PROGRAM GUIDELINES These guidelines govern the procedures and qualifications for Austin Energy's Solar PV 5-Year PBI Program. Austin Energy reserves the right to refuse applications that do not meet program requirements. These guidelines are subject to change.



Solar Access. Solar access measures how much sun your roof will get based on shading from nearby trees or buildings. Solar Access is expressed as a percentage of your roof with ideal shading conditions, i.e. no shade at all. Total Solar Resource Fraction (TSRF) TSRF accounts for tilt, orientation and shade. In fact, TSRF can be calculated by



Austin Energy's Customer Energy Solutions (CES) team helps our customers save money and energy through a wide selection of rebate offerings and incentives. We are committed to bringing energy savings, cost-effective efficiency, and solar programs to our customers in all sectors. See how we did in FY 2021. Download the Report. Date last

AUSTIN ENERGY SOLAR PROGRAM TSRF



The program also cross promotes Austin Energy's Power Partner Thermostat program and heat pump water heater rebates through in-store signage and during in-store events at retail locations throughout Austin Energy's service territory. The SPUR program achieved more than 1.7 MW of demand savings in FY 2021. Instant savings has retail locations



The Shared Solar Pilot Program enables more cost-effective solar installations on multi-tenant properties for our low-to-moderate-income customers. Skip to main content Austin Energy has developed an innovative metering and billing solution that reduces installation costs for solar projects on multi-tenant properties and creates solar bill



The Total Solar Resource Fraction (TSRF) estimates the combined effects of shading, tilt and orientation on a system's performance. Energy Trust requires Solar trade allies to verify TSRF for a proposed project by submitting a solar resource assessment from an approved shade analysis tool using one of the two approved methods:

AUSTIN ENERGY SOLAR PROGRAM TSRF



Customer Energy Solutions Program Updates. News. News. News Releases. 2024. 2023. 2022. Media Kit. Residential. Austin Energy purchases renewable energy from wind, solar, and biomass facilities to minimize our impact on the environment. Since the 2010s when Austin Energy began purchasing solar power, it has added several hundred



All solar energy systems that are installed in Austin must pass a solar inspection before they can be turned on. Requests are to be submitted by the solar company once the project has been completed. Customer Energy Solutions Program Updates. News. News. News Releases. 2024. 2023. 2022. Media Kit. Residential. City of Austin Utilities. Save



Total Solar Resource Fraction, or TSRF, is a measure of available solar energy that takes into account the two other metrics we've discussed in this article ??? solar access and TOF. TSRF can be calculated by multiplying the solar access of the site by the TOF percentage.

AUSTIN ENERGY SOLAR PROGRAM TSRF



These guidelines govern the procedures and qualifications for Austin Energy's Solar PV Residential Rebate Program. Austin Energy guidelines and incentive levels are subject to change without prior notice, and Austin Energy reserves the right to refuse any TSRF and annual production in kWhs. SOLAR PHOTOVOLTAIC (PV) RESIDENTIAL REBATE



Impact Energy: Your Solar Sidekick on the TSRF Journey At Impact Energy, we're all about helping you unlock your rooftop's solar potential. Our team of solar experts are TSRF whisperers, adept at analyzing your location, assessing your roof, and designing a system that maximizes your sunshine score. From initial consultations to expert



Austin Energy Programs and Services Related to Solar 2. Tips for Spotting a Solar Scam 3. Things to Know When Designing Your System Total Solar Resource Fraction (TSRF) % at or above 75%) on their home. To be eligible to receive a rebate, you must be an Austin Energy Customer, meet program guidelines, and use one of the solar contractors on

AUSTIN ENERGY SOLAR PROGRAM TSRF



This fee helps to fund low-income and energy efficiency public benefit programs. Value of Distributed Energy Resources (VDER) or Value Stack. The second option is the Value of Distributed Energy Resources (VDER), also known as the Value Stack. This program compensates solar owners based on the value of the excess electricity at the time it is