

What is a saj B2 battery?

SAJ B2 Series Home Battery - Modular, Reliable, and Scalable Energy Storage Battery Modules Only.

**\*\*Controller, Base and Inverter sold separately** The SAJ B2 Series Home Battery offers a reliable, modular, and efficient energy storage solution for modern homes. Utilizing advanced LiFePO<sub>4</sub> (Lithium Iron Phosphate)...

What is a B2 battery?

B2 battery is a high voltage lithium battery (LiFePO<sub>4</sub>) of 5.12kWh. The B2 Battery is in modular design and is expandable from 5.12 to 25kWh. It is compatible with SAJ low-voltage storage solar products. Solar Victoria \$8,800 interest-free battery loans available to help you reduce the upfront cost of installing a battery on your home. Ask us how!

Can the SAJ b2 be scalable?

The SAJ B2 can be scaled to match any home's energy storage needs, scalable from 5.12kWh with one unit to a staggering 25kWh. This comes with the added benefit of being able to add additional storage units down the line as your home's needs grow, without the need to buy additional control units.

How many battery modules can a B2 series have?

**Modular and Scalable Design:** The B2 Series supports a modular design, allowing you to stack up to 5 battery modules for a maximum capacity of 25.0kWh. This makes it adaptable to a variety of residential energy requirements.

Who is Saj electric?

**About SAJ Electric:** SAJ Electric is a leader in energy storage solutions, known for its innovative, high-quality products. The B2 Series Lithium Battery is designed with a focus on safety, performance, and adaptability to meet various energy storage needs.

Why should you choose a B2 series battery?

The modular and scalable design, ranging from 5.0 kWh to 25.0 kWh, along with IP65 outdoor design, ensures the B2 SERIES can be custom-fitted to various needs, offering robustness and adaptability in various conditions. LiFePO<sub>4</sub> Batteries: Offers reliability with a safe 90% Depth of Discharge.



SAJ B2 Battery Base; Distribuidor SAJ B2 Battery Base. Referencia interna: 070043 Ficha t cnica: Manual: Certificados: Garant a: La bater a B2 es una bater a LiFePO4 de alto voltaje sin cobalto. Con una carcasa de chapa, admite una estructura compatible con los m todos de instalaci n de montaje en pared y apilamiento.



Established in 2005, SAJ has a strong R&D and technical service team; in total 1520 employees located in China, Belgium, India, and Australia. SAJ solar products include grid-tied solar inverter, storage solar inverter, all-in-one battery solution and monitoring platform.



B2 Series. The B2 Series is designed for homeowners looking for efficient and scalable energy storage solutions.. Its compact design makes it perfect for residential installations, while its high efficiency ensures you get the most out of your solar system, as evidenced in ???



The B2 series lithium battery is an advanced energy storage solution designed for both residential and commercial applications. It offers flexibility in installation, as it can be either wall-mounted or ground-mounted, depending on the needs of the user. Be the first to review "SAJ 5kWh Battery" Cancel reply. we are Australia's



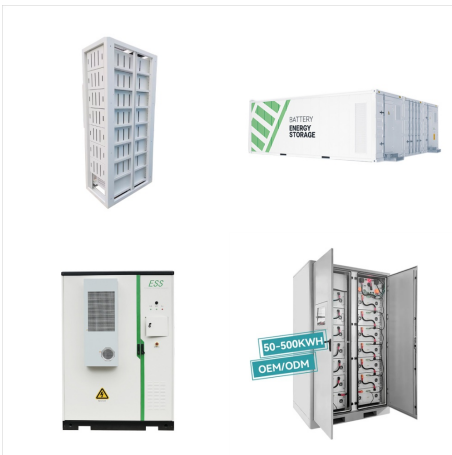
SAJ have operated in Australia for five years and have an office in Sydney. Three phase solar only SAJ inverters R5 - 5kW, 8kW, SAJ ES-B2 high voltage battery ES-B2 Floor stand and BMS/power control unit \$890 5kWh (4.5kWh usable) battery module - \$3,080.



The SAJ B2 battery combines affordability with reliability. It provides flexible energy storage options, with models suited for small to medium-sized households. Known for its compatibility with various solar inverters and its robust build quality, the SAJ B2 is an excellent choice for budget-conscious buyers who don't want to compromise on



The replaced battery or product in exchange will become SAJ's property immediately. SAJ Digital Energy Australia Pty Ltd. 1 Precision Lane, Notting Hill, VIC 3168 Australia. Tel: +61 1800 888 725 E-mail: [info@saj-electric](mailto:info@saj-electric) Website:



LiFePO4 batteries, safe and reliable  
[info@saj-electric](mailto:info@saj-electric) . Products are continuously updated and parameters are just for reference.  
 V1.1-20240628 B2-5.0-HV1 1 5.0 4.5 261\*626\*365  
 50.5 102.4 89.6-115.2 B2-10.0-HV1 2 10.0 9.0  
 522\*626\*365 101 204.8 179.2-230.4 BU2-5.0-HV1  
 (32S1P 102.4V50Ah) B2-15.0-HV1 3 15.0



Homeowners looking for a reliable and durable battery from a trusted solar brand, with the option to expand capacity as needed. 4. SAJ B2 Battery Overview. The SAJ B2 battery system is an advanced energy storage solution from SAJ, designed to offer high efficiency, durability, and flexibility for residential use. Key Features





Join us in celebrating another successful installation in Adelaide, Australia, featuring the powerful????,? SAJ Hybrid Solar Inverter H2 and Batteries B2!????,? Step into a world of energy



The SAJ B2 series is a high-voltage solar battery. Its cobalt-free LiFePO4 battery cells make it a safe and reliable choice for residential solar installations. The B2 Battery is flexible and adaptable. It can be customised to fit different energy needs, ranging from 5.0 kWh to 25.0 kWh.



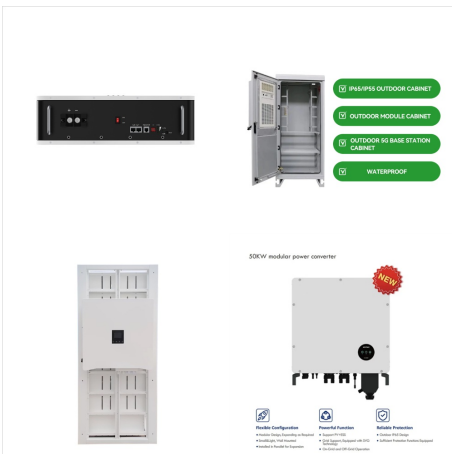
B2 battery is a high-voltage cobalt free LiFePO4 battery. With a sheet metal shell, it adapts a structure compatible with wall-mounting and stacking installation methods. The pack of B2 Battery contains battery modules and a BMS controller.



SAJ B2 HV BMS + Battery Cable Kit. Referencia interna: 070042 Ficha t cnica: Manual: Certificados: Garant a: La bater a B2 es una bater a LiFePO4 de alto voltaje sin cobalto. El paquete de la bater a B2 contiene m dulos de bater a (Ref. 070041), una base ( Ref. 070043) y un controlador BMS (Ref. 070042). El n mero de m dulos de



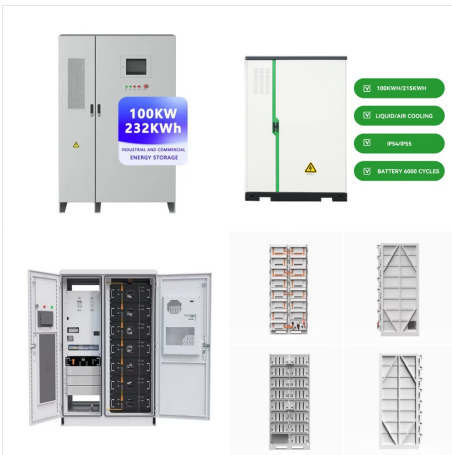
ES-SAJ-B2 Battery Module-5kWh \$ 1,950.00. SAJ Battery Module 5kWh for B2 Battery Kit quantity. Add to cart. Description; Additional information; Reviews (0) Specification. Battery Capacity (kWh) 5. IP Rating. 65. Battery Type. HV. CEC ???



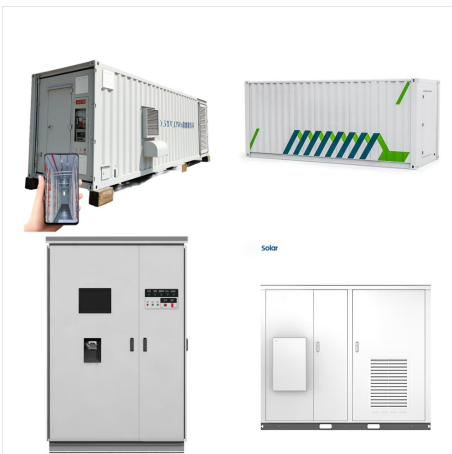
The SAJ B1 5.1kWh Lithium Battery, homegrown photovoltaic stockpiling framework and particular plan that works with association and establishment. A high-voltage cobalt-free LiFePO4 battery is the B2 battery. It adapts a structure suitable for wall-mounting and stacking installation methods with a sheet metal casing. Western Australia 7



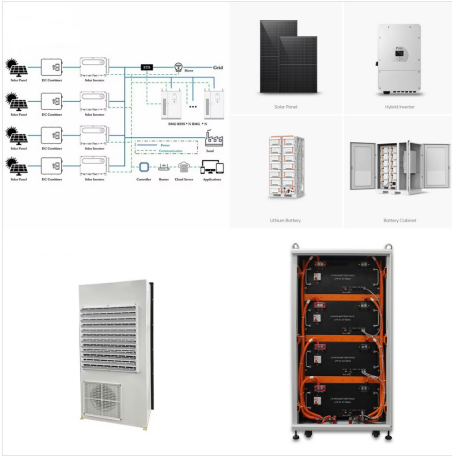
La batteria B2 ? una batteria LiFePO4 senza cobalto ad alta tensione. Con un involucro in lamiera, adduce una struttura compatibile con i metodi di installazione a parete e impilamento. Il pacco di B2 Battery contiene moduli batteria e un controller BMS. Il numero di moduli della batteria pu? essere abbinato in modo flessibile secondo [???



SAJ Australia Pty Ltd Add: 17 Silicon Pl,  
Tullamarine VIC 3043, Australia E-mail:  
info@saj-electric Tel: +61 3 8353 1112. SAJ Solar  
Inverters Pros and Cons Pros. Unfortunately the  
battery charges from the grid during the evening  
once discharged (during the peak rate). SAJ could  
not understand that I wanted the battery to be set so  
that



B2 Series Battery 1 2 PERICOLO ? ?  
PRECAUZIONI DI SICUREZZA 1.1 Campo di  
Applicazione Questo Manuale Utente contiene  
istruzioni e procedure dettagliate per l'installazione,  
il funzionamento, la manutenzione e la risoluzione  
dei problemi dei seguenti prodotti SAJ: B2-5.0-HV1;  
B2-10.0-HV1; B2-15.0-HV1; B2-20.0-HV1;  
B2-25.0-HV1;



B2 Higher Voltage Modular Batteries. Rather than use an SAJ all-in-one H2S battery system, SAJ's B2 series batteries can be paired with a hybrid inverter. To avoid compatibility issues, this will normally be an SAJ hybrid inverter. But it's ???



SAJ 15kWh (B2-15.3-HV1) Battery. SAJ 15kWh (B2-15.3-HV1) Battery. Skip to content. Shop. Buy Solar Panel System; Buy Best Battery in Australia; Buy Inverter in Australia; we are Australia's one of the leading solar retailers committed to helping make the world a greener place. Social Profiles. Facebook Instagram LinkedIn .



Your one-stop shop for high-quality solar products in Australia. Explore our range of solar panels, batteries, and accessories to empower your home or business with sustainable energy solutions. The SAJ B2 Battery Packages with SAJ 3 Phase Hybrid Inverter and Accessories is an all-encompassing solar energy solution. Featuring a powerful B2

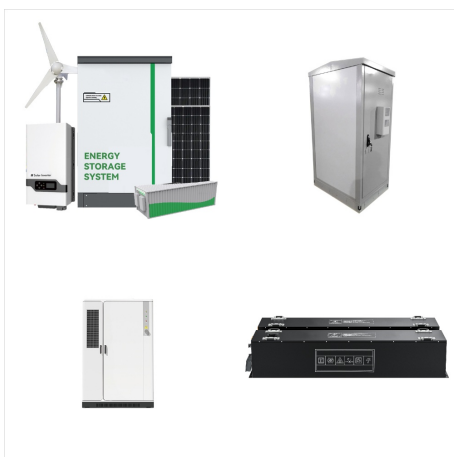




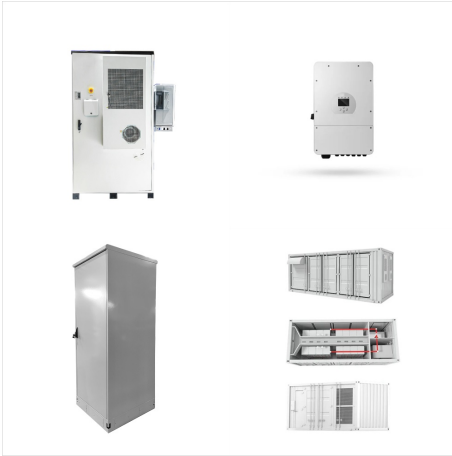
The SAJ B2 Battery Packages with SAJ 3 Phase Hybrid Inverter and Accessories is an all-encompassing solar energy solution. Featuring a powerful B2-5.0-HV1 battery modules and an efficient H2-5K-S2-V2 hybrid inverter, this bundle is ideal for homeowners and businesses seeking to optimize their solar power generation and



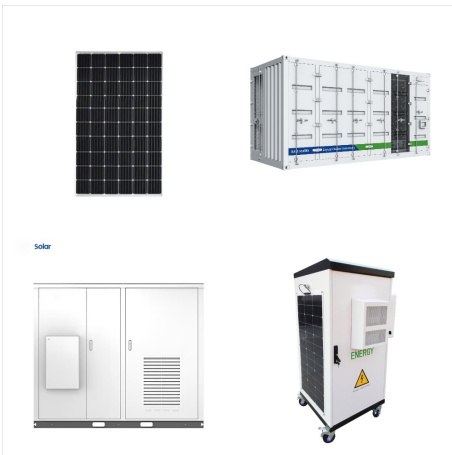
The SAJ B2 Series Home Battery offers a reliable, modular, and efficient energy storage solution for modern homes. Utilizing advanced LiFePO4 (Lithium Iron Phosphate) battery technology, the SAJ B2 Series ensures safety, long-term ???



SAJ Battery Module 5kWh for B2 Battery Kit.  
ES-SAJ-B2 Battery Module-5kWh \$ 1,950.00. SAJ  
Battery Module 5kWh for B2 Battery Kit quantity.  
Add to cart. Description; Additional information;  
Reviews (0) Specification. Battery ???



SAJ Battery Module 5kWh HV5 for B2 Battery Kit. Facebook. info@solarlinkaustralia 1800 155 597 Monday - Friday: 9am - 5pm 1800 155 597 Our team is committed to making renewable energy a major part of Australia's energy base. Areas We Service. Queensland South Australia Tasmania Victoria Western Australia ACT/Canberra New South Wales



SAJ 25kWh (B2-25.6-HV1) Battery. SAJ 25kWh (B2-25.6-HV1) Battery. Skip to content. Shop. Buy Solar Panel System; Buy Best Battery in Australia; Buy Inverter in Australia; we are Australia's one of the leading solar retailers committed to helping make the world a greener place. Social Profiles. Facebook Instagram LinkedIn .



SAJ 10kWh Battery. The B2 series lithium battery is an advanced energy storage solution designed for both residential and With over 8 years in the business, we are Australia's one of the leading solar retailers committed to helping make the world a greener place. Social Profiles. Facebook Instagram LinkedIn .



info@saj-electric B2 SERIES LITHIUM BATTERY

IP65 LFP 90%90% Depth of discharge

Wall-mounted or ground-mounted Modular design

scalable up to 25.0kWh IP65 outdoor design

Remote firmware upgrade LiFePO4 batteries, safe

and reliable B2-5.0-HV1 | B2-10.0-HV1 |

B2-15.0-HV1 B2-20.0-HV1 | B2-25.0-HV1