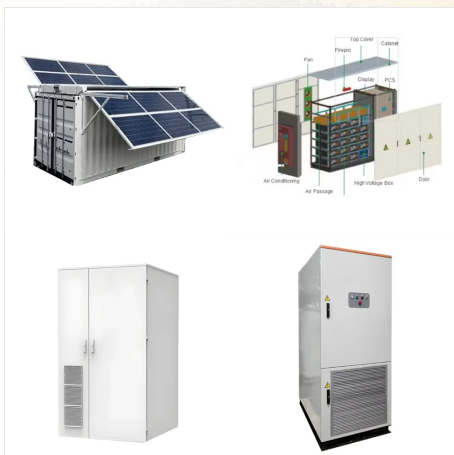




Autec Power Systems expects our suppliers to: Source materials from DRC conflict-free resources Comply with the Dodd-Frank Wall Street Reform and Consumer Protection Act and provide the "Conflict Mineral Reporting Template" and all necessary declarations Establish their own due-diligence program to ensure conflict-free supply chains.



Autec Power Systems expects our suppliers to: Source materials from DRC conflict-free resources Comply with the Dodd-Frank Wall Street Reform and Consumer Protection Act and provide the "Conflict Mineral Reporting Template" and all necessary declarations Establish their own due-diligence program to ensure conflict-free supply chains.



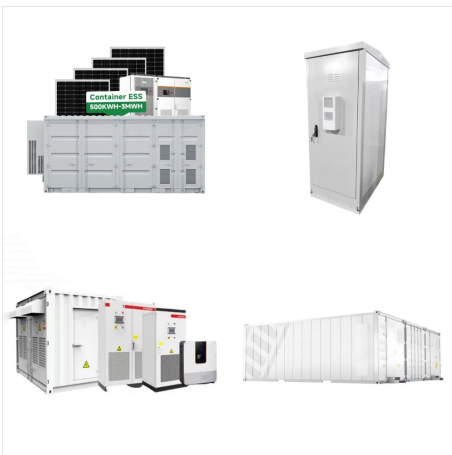
"The Clover" falls into Autec's L13WCD600 Series and is a High Power Constant Current LED Driver. It features a metal casing, input voltage of 120Vac-277Vac, an output range of 2200mA-11110mA, and a power rating of 600W. The Clover is a UL Listed, IP67-rated driver that runs at an efficiency rating of up to 95% and features 0-10/PWM/Communication Dimming with a 0-10V.

AUTEC POWER SYSTEMS

LEDWCD050S110L2



An American company founded in 1989, Autec Power Systems time-tested and proven broad-line product portfolio of power supply solutions are globally recognized and found in the end-products of the world's leading high-technology Original Equipment Manufacturers (OEMs) in computing, energy, industrial controls, medical, POS/Retail, security, smart-lighting, ???



Autec's LNWV-Series "The Napoleon" is a UL recognized LED Driver Class 2 featuring an input voltage of 120V-277Vac and an output range of 50-1600mA. It is a Constant Voltage design with an aluminum casing and is available in power ratings of 12W and 20W. With a surge rating of 2KV, an IP65 rating, and an efficiency of up to 83%, this Made-In-Taiwan unit is ready to ???



The Venom is Autec's LXWV-series Constant Voltage LED Driver. It features an input voltage of 120V-244Vac, an output range of 0-16666mA, and power rating options of 5W, 8W, 10W, 14W, 24W, 25W, 40W, 50W, 60W, 100W, and 150W. The Venom is UL Listed, UL Class P, Type TL, UL Class 2 and is available in casing options of plastic, metal, and J-box. With an IP20 and ???

AUTEC POWER SYSTEMS

LEDWCD050S110L2



"The Tiger" a constant current metal enclosed LED driver for high brightness LED's with multiple dimming options 0-10V, triac, Wifi/DALI, and Autecs own dual dimming technology. This UL Class P and 2 driver has a whopping six power outputs of 5, 8, 12, 15, 27, 30 and 50 watts. The Tiger is a great choice for indoor and outdoor locations when you need multiple power options for high ???



"The Asteroid" belongs to the Desktop Industrial Power Supplies family (DTXXXXA series). Featuring a Universal Input Voltage of 100???240Vac and an efficiency rating of Level VI, "The Asteroid" stands up to the challenge. Available in power ratings of 18W, 24W, 35W (dual output), 36W, 50W, 65W, 90W, 120W, 160W, 200W, 250, and 300W. Featuring IEC62368???1 safety as ???



Autec Power Systems expects our suppliers to:Source materials from DRC conflict-free resourcesComply with the Dodd-Frank Wall Street Reform and Consumer Protection Act and provide the "Conflict Mineral Reporting Template" and all necessary declarationsEstablish their own due-diligence program to ensure conflict-free supply chains.



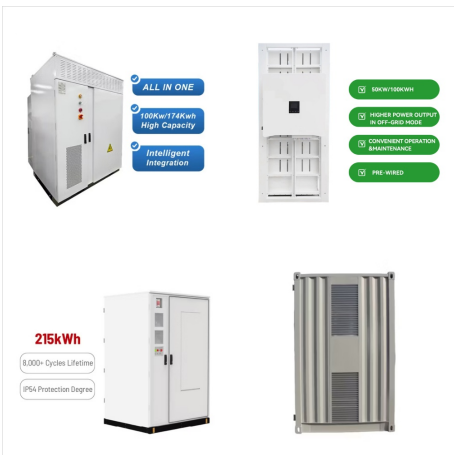
"The Treasure" is a rechargeable lithium-ion polymer (LiPO) battery. The battery has an extra long life of five years; letting it run at a nominal 3.67 or 3.7 volts at 11600MaH. Helping this battery remain charged at peak level is overcharge and discharge protection. Help keep your small portable electronics running efficiently in high temps with a charge time in as little as two hours.

AUTEC POWER SYSTEMS

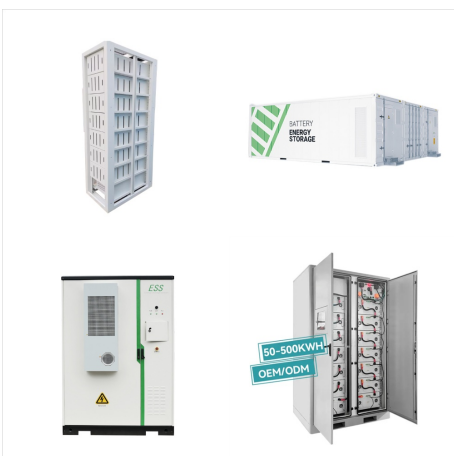
LEDWCD050S110L2



"The Salvation" is a UPS Battery Backup Power Supply Unit that is designed for medical and industrial applications. "The Salvation" is designed to provide continuous power in the event of a power outage. Designed for medical and industrial grade equipment The Point of Care UPS and battery backup is ideal for IT infrastructure such as; small servers, routers, ???



"The Dynamic" (HP Series) is a high-efficiency power solution offered by Autec as part of our AutecFlex line of products. These High Power Density Models include Universal Input Voltages of 85Vac-300Vac & 208-530Vac, Output Current of 56100mA-125000mA, and Power rating options of 3000W and 6000W. This IP20-rated unit features Digital Control, Forced Air Cooling, and is ???



Autec Power Systems LEDWCD050S070ST AC/DC LED Power Supply 50W Single Datasheet Product Details. Find similar products Compliance. RoHS. Compliant. Physical. Mount. Screw. Datasheet Compare Parts Purchase. Call or Request Quote for Pricing

AUTEC POWER SYSTEMS

LEDWCD050S110L2



Autec's versatile "Nightingale" series is a set of medical power supplies offered in several form factors. Featuring an open-frame case design, this industrial-grade unit accepts universal input voltage of 90-264Vac and handles output currents of 1360mA-50000mA. The Nightingale is available in power ratings of 12W, 24W, 65W, 120W, 150W, 210W, 305W, 600W, and 612W.



Autec Power Incorporated is a reputable power supply & battery manufacturer in USA. +1 (408) 515 5920 vanceb@autecpowerinc . Get Free Consulting: +1 (408) 515 5920; At Autec Power system, you will get help and fault protection when you need it. ???



The Autec Power Systems LEDWCD050S070ST is a 5 watt, single output, DC-DC converter. It features a wide input range from 4.5-5.5 volts and provides an adjustable output range from 0.75-7.0 volts. It provides short-circuit, overload and thermal protection with a maximum efficiency of 92%. The LEDWCD050S070ST has a wide operating temperature

AUTEC POWER SYSTEMS

LEDWCD050S110L2



Autec Power Systems is a organization striving to design the most efficient and dependable power supplies on the market. Our product catalog includes LED Drivers, Medical-Grade Power Supplies, Batteries and fully Custom Power ???



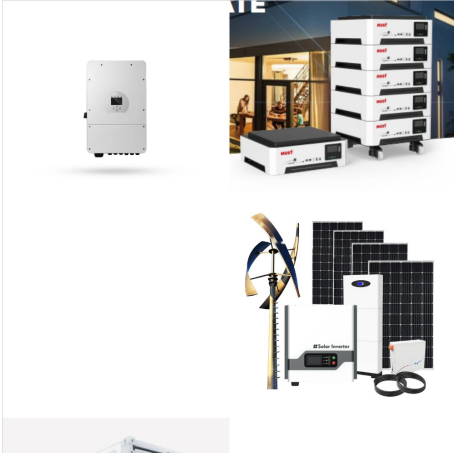
Autec Power Systems expects our suppliers to:Source materials from DRC conflict-free resourcesComply with the Dodd-Frank Wall Street Reform and Consumer Protection Act and provide the "Conflict Mineral Reporting Template" and all necessary declarationsEstablish their own due-diligence program to ensure conflict-free supply chains.



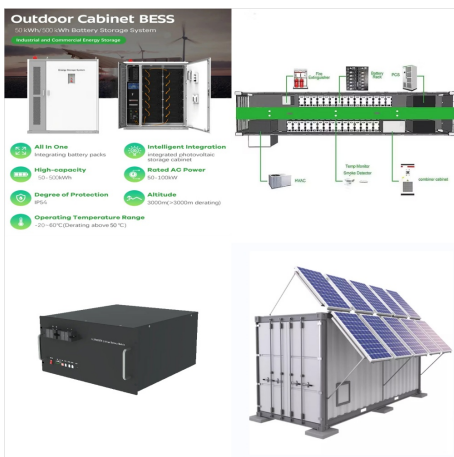
Autec Power Systems expects our suppliers to:Source materials from DRC conflict-free resourcesComply with the Dodd-Frank Wall Street Reform and Consumer Protection Act and provide the "Conflict Mineral Reporting Template" and all necessary declarationsEstablish their own due-diligence program to ensure conflict-free supply chains.

AUTEC POWER SYSTEMS

LEDWCD050S110L2



The Diamond (LSDCMPPT / LSDCDMPPT Series) is a Constant Current High-Efficiency LED Driver. Featuring 10Vdc-40Vdc Input Voltage and Output Range of 0mA-4000mA, the Diamond is available in Power Ratings of 50W, 100W, and 200W. Optional features include 12V or 24V battery charging with auto detection and smart charge, solar powered, programmable ???



With a wide variety of case options and power ratings, "The Striker" is a Constant Current LED Driver that will safely and reliably power your indoor or outdoor systems. Choose between metal, plastic, aluminum, linear, or J-box case designs. With options varying between 90???305Vac and 100???277Vac, the Striker is a hybrid Constant Current/Constant Voltage ???



"The Doctor" falls under the category of Desktop Medical Power Supplies (DT-M series), featuring a Universal Input Voltage of 100???240Vac and an efficiency rating of Level VI. "The Doctor" meets 2xMOPP qualifications and features four inlet options: C6, C8, C14, and C18. With power ratings options of 036W, 065W, 090W, 120W, 160W, 200W, 250W, and 300W, "The Doctor" has you ???