

Maximum Power: 720W Maximum Current: 60A  
Switch operation: On-Off With/without light sensor:  
Yes Operating Temperature: - 40? C ~ + 105? C  
Waterproof: IP68. Features: Universal 6 Gang/8  
Gang switch panel relay system. Power up to 6/8  
lights & accessories from one convenient place.

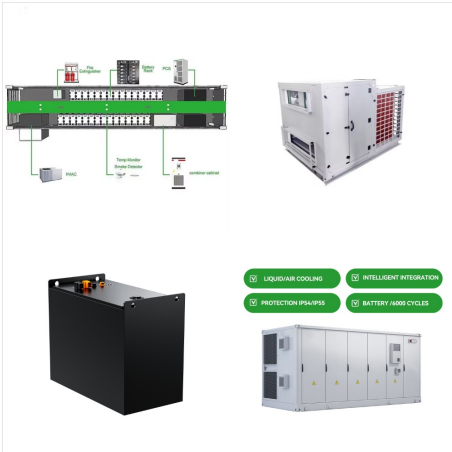


Auxiliary system of a unit-connected generator. A portion of a typical auxiliary system of a unit-connected generator is shown in Figure 1 below. The 4 kV auxiliary bus is fed directly from the 20 kV generator leads or from the startup transformer and is the source for the major motors. As unit sizes increase, the auxiliary load increases



This research proposes a roof-mounted auxiliary power supply (APS) system for 600VDC low-floor light rail vehicle (LRV). The proposed APS system consists of five parallel-connected dc-ac inverter

# AUXILIARY POWER CONTROL SYSTEM FOR LIGHTS



PCS-64-HT-NS | Honda Talon Plug and Play 6 Switch Power Control System a?? Switches not Included; SP-3SW-HT | Honda Talon 3 Switch Mounting Plate; HORN-HON-S2LB HON-S3-PWROUT | Honda Talon Plug and Play Power Out License Plate/Whip Light a?? Plugs into Rear Tail light; HON-AUX-SPLIT | Honda Talon Plug and Play Auxiliary Power Splitter; HON



WESMAR's unique Auxiliary Propulsion Unit (APU) uses hydraulic power sourced from the ship's generator to drive the propeller shaft providing back-up if the main engine is lost due to fuel contamination or mechanical failure.



The light will operate separate from the trailer clearance and tail lights and will not need to have the truck light turned on to work. The auxiliary wire will also allow you to use other 12-volt trailer accessories, like an electric jack. This auxiliary 12-volt can also supply a maintenance charge to the trailer's battery and breakaway battery.

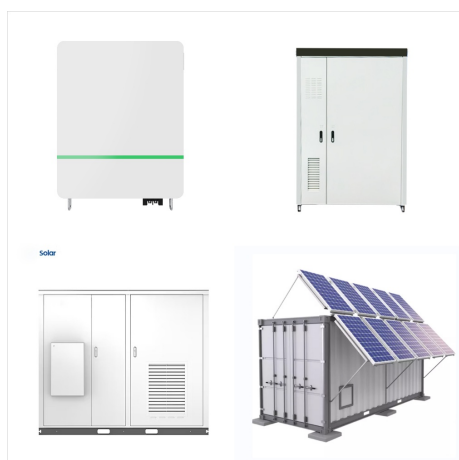
# AUXILIARY POWER CONTROL SYSTEM FOR LIGHTS



Auxiliary aircraft systems for the purpose of this overview are any system in the airplane that either support other essential systems or are systems that play another supportive role in the function. A servo is a cylinder with a piston inside that turns fluid power into work and creates the power needed to move an aircraft system or flight.

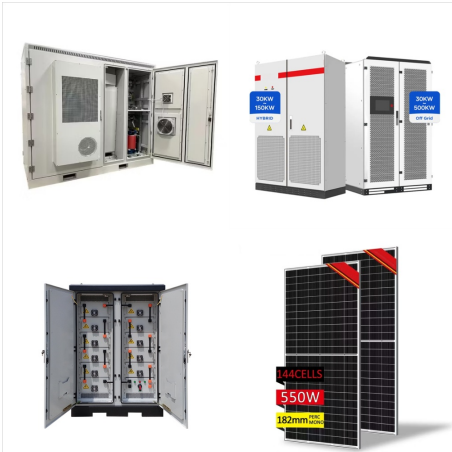


With its advanced electronic control unit, such as the BantamX and SourceLT, sPOD offers a centralized means of managing and controlling auxiliary 12V electrical components, including lighting, winches, and air compressors.



When Auxbeam released its switch panel, it shook up the industry a bit and opened the budget market. It is the OG budget-friendly option and if you search for one, it is sure to be one of the first to pop up. Their kit also comes with mounting brackets for the panel and controller and all necessary hardware.

# AUXILIARY POWER CONTROL SYSTEM FOR LIGHTS



Primary control of the unit is achieved through a master switch on the flight engineer's auxiliary panel. In addition an APU remote control panel is located in the left wheel well. Once the start sequence is begun, operation of the auxiliary power unit is completely automatic.



device heaters, outdoor lighting and receptacles, control house equipment, and motor-operated (1.7) for the asymmetrical current is satisfactory for auxiliary power system calculations. Fuse and circuit breaker manufacturers have handbooks with X, R, and Z values for transformers, current transformers, cables, etc., together with methods



Ba??Automatic Bya??pass Switch for Auxiliary Power Input Ca??Bolt On Enclosure with 30A L5a??30P 2W3P 125VAC male inlet for Auxiliary Power input/Locking police key door Da??Security U bolt to secure Auxiliary Power source to cabinet Ea??LED Indicator Light to identify "Utility On"



# AUXILIARY POWER CONTROL SYSTEM FOR LIGHTS



Auxiliary power systems are essential to powering auxiliaries on trains. But a variety of external light-rail, high-speed, main-line, and underground trains, trams, and take full control of your auxiliary system. WABTEC Auxiliary Power Systems a?|



Built-in Bluetooth module allows you to program and control the system anytime & anywhere. 3 modes setting. Each switch has 3 kinds of light status, different indicator status represents different working modes. RED-Toggle, Constant light a?|



Types of auxiliary Load Thermal management system. In traditional ICE vehicles, the biggest auxiliary power consumption was or is the AC climate control system. Depending on the weather but especially in the hot and humid climate conditions ICE AC climate control systems can consume roughly up to 25-30% of fuel consumption.

# AUXILIARY POWER CONTROL SYSTEM FOR LIGHTS



Building a modern overland/expedition vehicle requires a lot of auxiliary power and a little planning to set it up correctly. Afterall, you're going to power multiple LED offroad lights, a winch, a?



Auxiliary systems refer to the supporting components and subsystems in Concentrated Solar Power (CSP) systems that help optimize the overall performance and efficiency of energy generation. These systems include equipment that assists in heat transfer, fluid management, energy storage, and operational controls, ensuring that the primary solar energy conversion a?|



Section 1 SYSTEM DESCRIPTION The Auxiliary Idle Control Module, also called Auxiliary Powertrain Control Module (APCM), is for use in Light Trucks equipped with 7.3L DIT Diesel engines. Each kit includes an Auxiliary Idle Control module, wiring harness, mounting bracket and hardware, operator's card, and this instruction booklet.

# AUXILIARY POWER CONTROL SYSTEM FOR LIGHTS



2.2 Lighting/Control (Low-Voltage) Busbar Form Selection. For the low-voltage busbar, its structure selection process can refer to the aforementioned medium-voltage busbar design method. DC auxiliary power supply system as a new field of low-voltage circuit breaker application, for the moving train set of medium-voltage DC voltage and



In the sprawling world of aviation, there are many components and systems that contribute to the safety and efficiency of an aircraft. The Auxiliary Power Unit (APU) plays a critical role in enhancing aviation safety and efficiency by providing essential power and enabling various functions both on the ground and in the air during normal and non-normal operations.



Buy Auxbeam 8 Gang Switch Panel BA80  
Automatic Dimmable LED Touch Control Panel Box  
Electronic Relay System Car Touch Switch Box  
Universal for Truck ATV UTV Boat Marine SUV  
Caravan -Blue, 2 Years Warranty: Multifunction -  
Amazon FREE DELIVERY possible on eligible  
purchases DC 12-24V, max current: 60A, rated  
voltage: 12V 20A / 24V 10A

# AUXILIARY POWER CONTROL SYSTEM FOR LIGHTS



An important type of "accessory" relay, especially for legacy electromechanical protective relays, is the so-called auxiliary or lockout relay, designated by the ANSI/IEEE number code 86. The purpose of an 86 relay is to serve as an intermediary element between one or more protective relays and one or more control devices, both expanding the number of control elements a?|



The twelve volt system is maintained to operate the headlights and various running lights, instruments, radio, heater fan, and other components common to the ICE vehicle. A heavy duty relay is required for power control and is typically actuated by both fan operation and an intermediate or higher heat control setting. Thermostatic control



Auxpower Bluetooth RGB 8 Gang Switch Panel A38 with 3 Lighting Modes LED Touch Control Panel with Automatic Dimmable Function Electronic Relay System Auxiliary Switch Pod for Trcuk Car ATV Waterproof \$150.99 In Stock



# AUXILIARY POWER CONTROL SYSTEM FOR LIGHTS



Off Road Lights switch panel for truck: chevy colorado, silverado, jeep, jeep jk, jeep tj, dodge ram truck, ford f150 f250, gmc sierra, marine, boat. The New RGB switch panel is now available! a?|



This kit is offered in clear or baja amber and allows you to replace or add a light system to the TRD Pro grille, featuring a 10-inch S8 light bar delivering 6,324 raw lumens, along with two S2 Pro LED light pods, each producing 2,245 raw lumens. Allows for expansion of up to 32 channels by linking additional BantamX power control modules



A power substation can have one or several DC systems. Factors affecting the number of systems are the need for more than one voltage level and the need for duplicating systems. Today, normal DC auxiliary supply systems in power substations are operating either on the 110 V or 220 V level, though lower levels exist.

# AUXILIARY POWER CONTROL SYSTEM FOR LIGHTS



Description An Auxiliary Power Unit or APU allows an aircraft to operate autonomously without reliance on ground support equipment such as a ground power unit, an external air-conditioning unit or a high pressure air start cart. The APU is a small jet engine which is normally located in the tail cone of the aircraft but, in some cases, is located in an engine nacelle or in the wheel well.