

Why does my ups beep when a power outage occurs?

When a power outage occurs, the UPS automatically switches to battery power and starts beeping to notify you of the situation. Low battery: If the battery of your UPS is running low on charge, it will emit a beeping sound to alert you. This serves as a reminder to recharge or replace the battery to maintain continuous power supply for your devices.

Why does my ups battery backup Beep?

A UPS battery backup will use beeping as a coded way of communicating its status to you. But unfortunately, those UPS beep codes aren't universal. That means the various UPS manufacturers can assign different meanings to the beeps you hear from their devices.

Do you need an UPS battery backup?

As a responsible technology user, you must have invested in a UPS (Uninterruptible Power Supply) battery backup to protect your electronic devices from unexpected power outages. While UPS devices are incredibly useful, they can sometimes become a source of frustration when they start beeping incessantly.

Is a backup battery a good idea?

Yes, if your backup battery is young, healthy, and fully charged. While a UPS system acts as an insurance policy for your equipment, ensuring the battery is well maintained is critical to making sure your UPS system is ready when a power outage occurs. Of all the causes of UPS failures, half are due to battery failure. What impacts battery life?

How do I mute my ups battery backup beeping?

You can temporarily mute your battery backup beeping by pressing the relevant button on your UPS front panel. However, the UPS will continue beeping after a while. To stop it permanently, you'll have to identify and resolve the root cause of the beeping, whether that's a drained battery or other internal faults.

What is a UPS battery backup?

UPS stands for Uninterruptible Power Supply. Its main function is to keep a consistent flow of power to whatever device is plugged into it - even during a utility power outage. And it has a means of letting you know

# BACKUP BATTERY LONG BEEL AFTER POWER OUTAGE



when an outage has occurred. A UPS battery backup will use beeping as a coded way of communicating its status to you.



10 Methods How to Stop Smoke Alarm Beeping during Power Outage 1. Replace the Battery: One of the primary reasons a smoke alarm beeps during a power outage is because the backup battery is either low or dead. ???



Battery works just fine when plugging the UPS off from the outlet It ONLY goes into overload long beep when a power outage happens. I already discarded the outlets being the issue, because I have an identical cyberpower UPS unit that works just fine connected to said outlets.



As for how long the NBN backup battery lasts in terms of its overall longevity, NBN Co reckons battery life will get around 70% of full capacity after 3.5 years (around 3.5 hours per full charge). Keep an ear out for beeping, which means it's time to replace (with four beeps per minute indicating 50% overall capacity, or around 2.5 hours per

# BACKUP BATTERY LONG BEEL AFTER POWER OUTAGE



During a power outage, your system will switch to its internal back up battery. The internal backup battery typically lasts 4 to 6 hours. Until the backup battery is depleted, your system will alert you with low battery beeps. To silence the low battery beep, visit our [Silence Low Battery Beeping FAQ](#) page.



Frequency of Power Events Power quality issues, such as voltage fluctuations, harmonic distortions, noise and power outages can cause the UPS to shut down and activate the backup battery. After a UPS operates on battery power during a power failure, the battery recharges for future use, an event known as the discharge cycle.

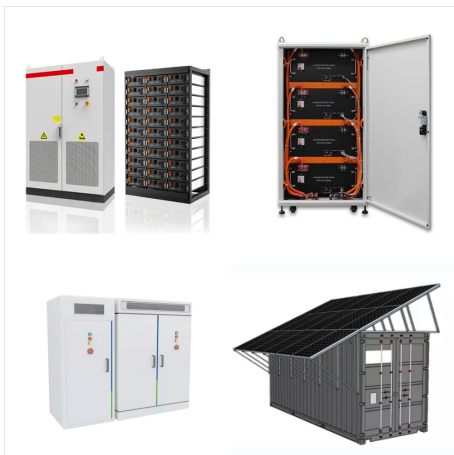


Smoke alarms are good for up to 10 years. Some models include a nonremovable 10-year lithium battery. If one or more of the smoke alarms are still chirping after you've changed any removable batteries and reset the units, it may be time to replace all of the smoke alarms in the house.. While you may be able to purchase new smoke alarms that plug into the old wiring ???

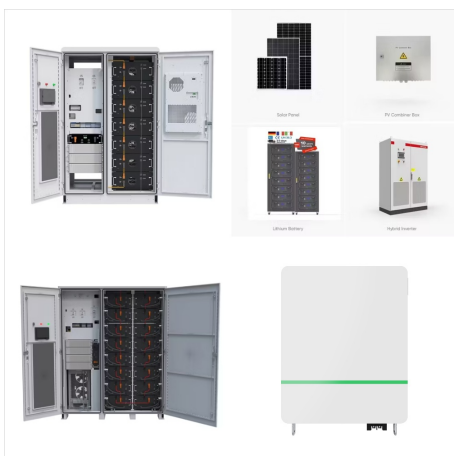
# BACKUP BATTERY LONG BEEL AFTER POWER OUTAGE



The internal backup battery typically lasts 4-6 hours. Until the backup battery is depleted, your system will alert you with low battery beeps. To silence the low battery beep, visit our Silence Low Battery Beeping FAQ page. 4. How long will my alarm system's battery take to charge after a power outage? It takes 24-48 hours for your alarm



If you have a UPS (uninterruptible power supply), battery backup, or similar device, you may have noticed that it emits a loud beeping noise when the power comes back on after an outage. This beeping is designed to alert you that the UPS is running on battery power and to give you time to save your work and shut down your computer before the



A UPS stands for Uninterruptible Power Supply, which is a separate device that contains rechargeable batteries (like your phone or laptop). You plug the UPS into a wall plug, and then your NAS connects to this. If there is a brownout or blackout, your NAS won't suddenly turn off: it will instead start drawing power from the UPS' battery backup.



# BACKUP BATTERY LONG BEEL AFTER POWER OUTAGE



How long does the PumpSpy battery backup system run on a battery charge? If the backup pump never shuts off during a power outage, the battery will last 5 1/2 to 6 hours. If the backup pump runs once every minute, the battery will last 2 days. In the event of a power failure, the Battery Backup System automatically switches over to the



I have two Chamberlain B6753T garage door openers with battery backup that were installed in Feb 2022. Today during a power outage they both started beeping. I'm not sure how long after the power outage that started as I didn't hear it until my husband mentioned the noise. I searched what was going on and was able to disconnect the batteries.



After Power is Restored "Low System Battery" Alert  
Once power is restored, your system's battery will begin to recharge itself. During this time, you may see a "Low System Battery" alert. This is normal and should go away once the battery is recharged. If this alert is still on your panel after 24 hours, please reach out to us.

# BACKUP BATTERY LONG BEEL AFTER POWER OUTAGE



This beeping alerts you that the system is running on backup power. The beeping could be a result of the backup battery failing to maintain its charge properly. If this is the case, you may need to consult ADT to replace the battery. Is My ADT Alarm Working When I Lose Power? Your ADT alarm system comes with a backup battery.



During, and After a Power Outage This resource provides guidance for septic system users before, during, and after a power outage. Understanding your septic system type, location, and components before a power outage occurs will make this guide more useful. Please visit neha to access educational resources for septic system users. Background



This ensures that your time settings and alarms are saved, and the clock continues to function even during a power outage. 3. How long does the backup battery last? The lifespan of a backup battery can vary, but in general, whole-house backup batteries can last anywhere from 5 to 15 years.

# BACKUP BATTERY LONG BEEL AFTER POWER OUTAGE



The most common reason for a sump pump battery backup to beep is a low battery. When the battery's charge drops below a certain level, the backup system will emit a beeping sound to alert you that it needs to be recharged or replaced. 2. Battery Failure. If the battery in your sump pump backup has failed, it may cause the unit to beep



The beeping or chirping shouldn't last long, just a few chirps in a row to alert you to its change in status. Loose connections can also be a major issue for your smoke detectors after a power outage. If there's a loose or disconnected neutral wire, a power surge or outage may cause it to suddenly malfunction.



10 Methods How to Stop Smoke Alarm Beeping during Power Outage 1. Replace the Battery: One of the primary reasons a smoke alarm beeps during a power outage is because the backup battery is either low or dead. Most smoke alarms are equipped with a battery backup to ensure they function during a power outage.

# BACKUP BATTERY LONG BEEL AFTER POWER OUTAGE



The backup battery typically lasts 24 hours in a power outage and automatically starts recharging when AC power is available. It usually takes about 48 hours for it to recharge completely. If the beeping doesn't go away after 48 hours, look into getting the battery replaced. Replace Your ADT Alarm Battery. If you haven't lost power recently



So, as long as the batteries are fresh and functioning, your smoke alarm should continue to work during a power outage. (Back to those "Check your battery!" PSAs.) Hardwired Smoke Alarms with Battery Backup: Many hardwired smoke detectors come with a battery backup feature. When the power goes out, these alarms switch to the backup battery



The backup beeps when the computer is being run from the batteries or if there is a problem with the UPS. Several steps can be taken to diagnose the reason for the beeping and find the proper solution. First, verify that the computer is plugged in and is receiving power.



# BACKUP BATTERY LONG BEEL AFTER POWER OUTAGE



The beeping from a battery backup system may indicate that the batteries are becoming old and can no longer hold a charge. Disconnect any large-draw devices from nearby outlets, as they may temporarily drop the line voltage, causing the system to switch to battery power for a few seconds.



Is your sump pump backup battery beeping incessantly, signaling a problem? Don't worry; you're not alone! Monitor how long it takes for the backup battery to engage fully. Next, simulate a power outage by unplugging your pump from its power source while keeping an eye on how quickly the backup battery takes over. This step will give you



Unfortunately, that also means it'll stop providing backup power to your critical devices. How Long Do UPS Last During Power Outage? A UPS typically lasts for 15-30 minutes during a power outage. However, that duration will depend on two things. Firstly, it depends on the battery capacity in your UPS.

# BACKUP BATTERY LONG BEEL AFTER POWER OUTAGE



Your UPS/BATTERY BACKUP beeps so that you are aware that power is either out or there is a possible UPS battery issue. Since you asked WHY DURING AN OUTAGE, the beep is reminding you to consider what you may need to do and HOW QUICKLY. When you purchased the unit, you may have noticed on the box that the UPS has specific performance limits.

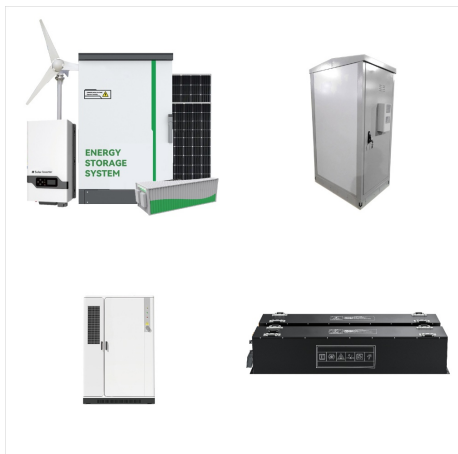


How long will a battery backup provide power? will not work during a power outage without a battery backup. To maintain phone service during a power outage, you need to purchase a battery backup, also known as an uninterruptured power supply (UPS). A battery backup provides electricity when your regular power source fails. When the



You can hook up the battery immediately when there is a power outage, but make sure the battery backup has enough capacity to handle the refrigerator's running and starting wattage. If your refrigerator draws around 500W per hour running and has a 1500W starting wattage, you can go with Jackery Solar Generator 1000 Plus.

# BACKUP BATTERY LONG BEEL AFTER POWER OUTAGE



Most systems (depending upon the number of hardwired devices connected to the system's main power supply) have enough battery backup power for short periods of power loss, anywhere from 4-12 hours. -group-logo-300x76.png Stuart Forchheimer 2012-07-15 14:59:42 2021-05-12 23:41:39 How to stop your security system from BEEPING when there is