

What are the most common backup camera power sources?

The most common backup camera power sources include the following options: Reverse Lighting Your tail lights are a very convenient source of backup camera power, and not just because they're already in the rear of your vehicle (where the camera will be installed).

What do you need for a backup camera?

You will need a backup camera, video and power cables, a display monitor, wire connectors, and a wiring harness. Additionally, having a multimeter can be helpful for testing the connections and ensuring everything is properly wired. Next, you'll need to locate the power source for your camera.

How do I wire a backup camera?

1. Determine the power source: Before proceeding with the wiring, you need to determine where you will get the power for your backup camera. The most common options include tapping into the reverse light circuit, connecting to the fuse box, or using a separate power source.

What is a backup camera wiring harness?

Wiring Harness A wiring harness is a set of wires and connectors that will allow you to connect the backup camera to your vehicle's power supply and display system. It typically includes the necessary cables for video transmission, power supply, and ground connection.

How do backup cameras work?

Some backup camera kits include monitors or mirrors that are turned off and on automatically when you go to reverse. By making the connections inside the cabin, as outlined above, you can take advantage of the same reverse trigger wire power source that was used for the camera to trigger the mirror as well.

Does a wired security camera have a battery backup?

As a safety measure, wired security camera systems can have a battery backup system that provides power during an outage. However, a battery backup is not standard in all camera models, so it's best to choose an option with this feature. The battery backup can help record criminals if they attempt to shut off the power during a home invasion.

BACKUP CAMERA POWER SUPPLY **SOLAR**



It isn't just power capacity that you need to look for in a backup power source, but other features and the portable power station as a whole. We have broken down our top four portable power stations below for you to review, listing their key ???



Replaces the power cable for your Furrrion observation system monitor. 1-800-940-8924 to order Furrrion accessories and parts part number C-FOS07TAPK-006 or order online at etrailer . Free expert support on all Furrrion products. ???



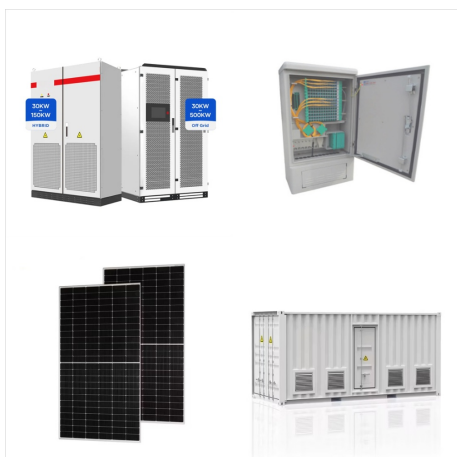
vDC 8amp Power Supply with Battery Backup.
Sales | Tech Support | 830am - 530pm EST (888) 573-2333 Regulated 12V Security Camera Power.
This 16-channel DC power supply plugs into a standard North American 110/120VAC wall outlet. It is designed for permanent installation. Maximum power (current) draw is 8 amps, measured as a sum



VideoSecu 33ft CCTV Security Camera 12V DC Power Supply Cable Pigtail Plug Extension Cord 2.1mm x 5.5mm for Surveillance DVR System W2U. Type: Pigtail Plug Extension Cord Specifications: This 33ft DC power pigtail extension cable can be used for CCTV security camera, DVRs and anything require power adapter with 2.1mm x 5.5mm plug. Easy to use, plug and ???



In this comprehensive backup camera wiring guide, we will walk you through the necessary steps to connect your camera to the power supply, display monitor, and reverse light. You will need a backup camera, video and power cables, a display monitor, wire connectors, and a wiring harness. Additionally, having a multimeter can be helpful for

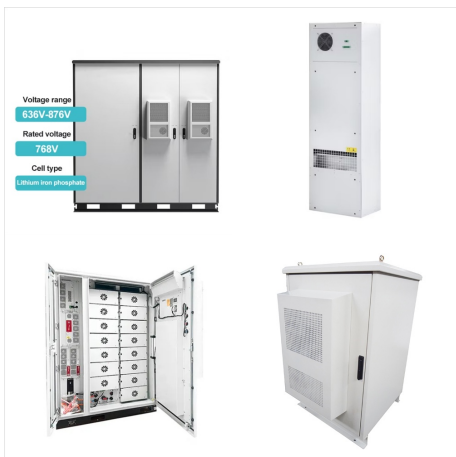


Power Supply Cord for Furrion Screen: - Replacement USB port car charger for Furrion FOS48TA-BL FOS48TAP Car Backup Camera monitor. Replacment part number: FOS07TAEM. Also compatible with : EWAY Wireless Backup Camera with 5" Monitor Kit ; DC 5V USB Input: - Boost up from 5v to 12v.

BACKUP CAMERA POWER SUPPLY **SOLAR**



The PT-102 power cable splitter is still used to split the 2.1mm female power plug of the pre-made cable to two 2.1mm female power plugs to allow both the camera and mic to share the power supply. A PT-3 power lead is used to connect the pre-made cable to a 12V DC power supply box on the DVR side of the cable run.



B-Qtech Vehicle License Plate Backup Camera, Rear View Camera Waterproof HD Color Night Vision Wide Viewing Angle, Back Up Camera for Car/SUV/RV Reversing Parking. \$13.99 \$ 13. 99. Get it as soon as Monday, Nov 4. Power Supply: DC 12V; Screen Size(L x ???



DC or direct current power supplies usually come in budget-friendly security camera systems. This power supply option is a wired connection that involves the owner plugging a small transformer into a standard 120v power outlet. Do Security Cameras Have Battery Backup? As a safety measure, wired security camera systems can have a battery



In this comprehensive backup camera wiring guide, we will walk you through the necessary steps to connect your camera to the power supply, display monitor, and reverse light. Whether you're a seasoned DIY enthusiast or just starting ???



A 5 pin reversing camera typically consists of five wires ??? power supply, ground, video signal, backup trigger, and trigger extension. Each wire serves a specific purpose and needs to be connected correctly to ensure the camera functions ???



The other issue would be back-feeding the reverse light circuit, probably very undesirable. I tried a large diode (can't recall the value) on the reverse light/backup camera circuit added to my F250 for similar reasons (wanted to switch on for trailer hookup/monitoring), the diode got so extremely hot fast that I abandoned the idea in favor of a manual only switch ???

BACKUP CAMERA POWER SUPPLY **SOLAR**



Backup camera installation is straightforward, and you can do it yourself if you're even just a little handy. All vehicles are a little different, but the process for installing a backup camera is pretty similar no matter what you drive. You need to: run the video cable from the camera to the video screen up front; supply the camera with power



AC/DC Power Centers Power Supply for Vision 1 & 2. MSRP \$16.95 View Products Camera Power Cable MSRP \$7.95 Monitor Bracket for Backup and Observation Camera. MSRP \$9.95 View Products Rear Marker Light Cover (Red) MSRP \$8.95



Unlock the full potential of your Accessories and Parts setup at etrailer . Find in-depth Backup Camera, Cables and Cords Accessories and Parts reviews, tutorials, and (# 04928) Plugs into cigarette lighter/12v power supply PC01 Replacement 12 Volt Charger Cable for SH01 Swift Hitch Camera More Information > Rear View Safety Camera



POWERING YOUR BACKUP CAMERA Backup cameras are an effective way to prevent car accidents that they are becoming mandatory for car manufacturers by 2018. However, many trucks, SUVs, and other old vehicles aren't equipped with the backup system yet. If your vehicle doesn't have a backup camera, you can still take advantage of this life-saving safety ???



Wireless CCTV Cameras/Kits; CCTV Cameras; Alarm Systems/Outdoor Beams; Accessories; LED & Solar Lights; DVR's & NVR's; Car Dashcams; Biometric Fingerprint readers; 18 Channel 20Amp UPS power supply with battery back up. Sale price R 1,899.00 Regular price R 2,199.00. Add to cart Quick view. Sherlo Battery Backup Power Supply 12V 6.4 Amp

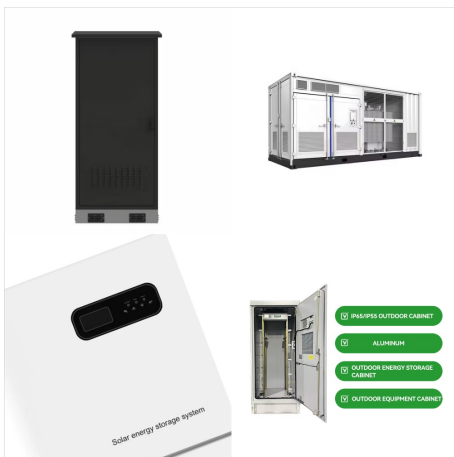


A 5 pin reversing camera typically consists of five wires ??? power supply, ground, video signal, backup trigger, and trigger extension. Each wire serves a specific purpose and needs to be connected correctly to ensure the camera functions properly. Start by connecting the power supply wire of the reversing camera to a constant 12V power

BACKUP CAMERA POWER SUPPLY **SOLAR**



Mini UPS, 15000mAh Uninterruptible Power Supply with DC Output USB 5V/2A DC 5V/9V/12V/2A, Power Supply Battery Backup for Router, Modem, Security Camera, Spectra S2 Breast Pump, and More (15000mAh) 4.7 out of 5 stars 14



Here's where we start to figure out how to power a backup camera. Let's go! Run the camera and power cable through the hole into the interior of your car. Locate the reverse light wires for your car. This is a tricky step, and you want to make sure that you do a good job. This is how to connect a backup camera to the reverse light.



???Plug and Play???The backup camera for car takes only 15 minutes from start to finish installation, just 2 steps: ?? First connect the camera and monitor through the 4-pin video power cable made of 3.0MM pure copper that comes with the camera. ??? Then plug the backup camera system into the cigarette lighter or USB plug (not included)



How you do utilize it depends on your vehicle, head unit, and other factors, such as wanting your camera to run continuously or just upon backup. Our expert shows you a few ways to use this



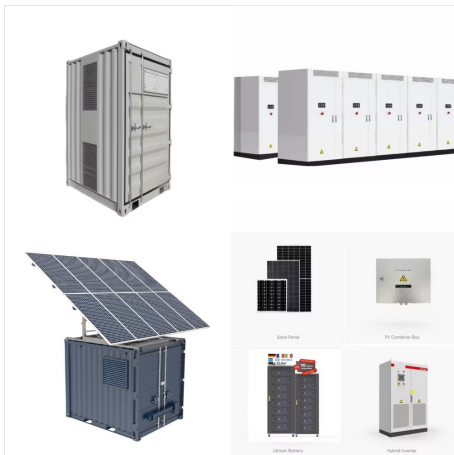
There are adapters on the market that can go from a cigarette lighter style plug that the # C-FOS07TAPK-006 has to USB/USB-C ports but we don't currently offer any so the only solution I can provide is the # RM-9332. This is a replacement outlet typically used to power portable braking systems when flat towing but can be used for this purpose as well.



PKPOWER Car DC Adapter For Yada BT54860-50 BackUp Camera Back Up 5 LCD Colored Monitor BT54860 893175 Auto Vehicle Boat RV Camper Power Supply Cord Cable PS Battery Charger Mains PSU. UPBRIGHT Adapter For Swann ak01g-120030u SW231-WCH Wireless OutdoorCam Camera N3960 Power Supply Cord Cable Charger. Add.



What to Look For in an Uninterruptible Power Supply (UPS) Many smart devices have built-in battery packs, with modern laptops packing enough cells to last a whole day. However, typical desktop computers, routers, and similar devices still need to be plugged into a power source all the time to work. That's where an uninterruptible power supply (UPS) ???

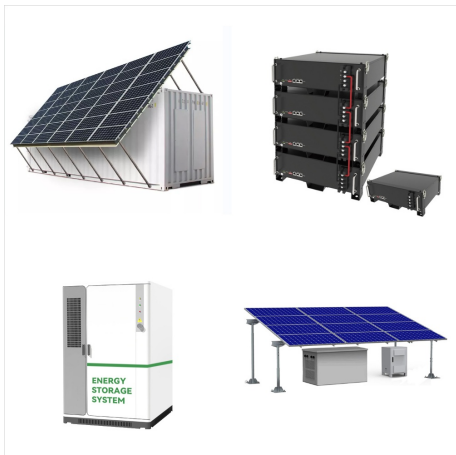


1-2 Camera Rearview Systems. 3-5 Camera Split Screen Systems. All Backup Camera Systems. RV's, Trailers, Cars, Trucks, & More; RV Rear View Camera Systems. Great Systems for any RV; License Plate Camera. Camera Systems for Cars & Pickup Trucks ; Solar Camera Systems. Solar powered observation cameras & monitors; Digital Wireless Backup Camera



Since you're connecting your signal cable to the rear of the radio anyway, this is often a, dare we say, "convenient" way to grab power. Hooking up a backup camera in a truck can be a challenge due to the length of the wire run on the outside of the body. Cris shows you how to run your backup camera wires safely.

BACKUP CAMERA POWER SUPPLY **SOLAR**



12V/24V Super Thin 4 Pin Cigarette Lighter Power Supply Kit for Car Rear View Camera and LCD Monitor with RCA Connection cable extension for Backup Camera. 2 Count (Pack of 1) Rohent E01 13.5ft Extension Power Cable for Backup Camera and Monitor Systems or Other Devices. \$19.99 \$ 19. 99.



Permanently installed cameras need a power source, and even cameras that don't connect directly to the display still need power. The EWay Wi-Fi Backup Camera isn't your standard backup camera



EWAY 2pcs USB to DC Car Charger Cable for Furrion FOS07TADS Vision S Monitor Power Supply Cord Replacement for FOS48TA-BL FOS48TAPK-BL Hitch Wireless Backup Camera 7 inch Screen Display Charging Cable. \$16.99 \$ 16. 99. Get it as soon as Wednesday, Nov 6. In Stock.