

What networking equipment should I install in my IDF?

We recommend installing the following networking equipment in your IDF: Rack & Wire Manager: holds all of the equipment in the IDF to make it easy to work with. Uninterruptible Power Supply (UPS): backup power in the event of a power outage. ISP Modems: provides an internet connection to the outside world.

How do I protect my IDF?

To optimize security, here are a few best practices: Keep your IDF locked and document who has key access. If you need 12Us or less to hold your network equipment, opt for a cabinet with a door and lock. Install a security camera outside your IDF to monitor activity and disincentivize unauthorized personnel from entering.

What is IDF & how does it work?

IDF (Intermediate Distribution Frame). The central point on a building's floor where all internet connectivity (i.e., fiber, coax cable) comes in and is distributed throughout the space. This connectivity originates from the central point where internet connectivity enters the building and is distributed between IDFs.

How do I connect my controller to the IDF?

As mentioned above, if your controller supports LTE, you can simply put a SIM card in your controller. After installing wireless access points and ethernet drops throughout your space, ethernet cables are run from these access points and drops to the IDF.

Why is IDF design so important?

Given its critical role in providing your internet & Wi-Fi, it's important to take the design and build of your IDF seriously, keeping in mind the load of the network, outages, future equipment planning, requirements of all vendors (e.g., Wi-Fi, AV, security), and aesthetics. Here's what we'll cover:

Where should I place my IDF?

If your space is under construction and you have the luxury of deciding where to place your IDF, choose a spot that's easy to run cabling from your riser shaft and is in the center of your space to make cable runs to access points shorter. The shorter your cable runs, the cheaper your installation and faster your data rates.



Solarcraft offers UPS systems for IDF and MDF as well as battery backup UPS for data centers. Request your quote today! Go to Navigation Go to Content. data centers, and networking equipment. Our comprehensive range of UPS systems provides robust protection against power outages, surges, and fluctuations,



The DC UPS is capable of automatically charging internal batteries to provide battery power for connected equipment during a power outage, offering continuous power supply. Hot-swappable Battery The batteries come with hot-swappable design, which allows users to replace UPS batteries without having to shut down DC UPS and connected equipment.



proceed to Upgrading IDF and MDF Infrastructure for VoIP on page 12. 2. Providing Reliable, Manageable Power for VoIP Network Wiring Closets: A Practical Guide to IDF/MDF Infrastructure Migration and Implementation Network/Telecom Closet Application Support: 888.447.6227 a?c solutions@tripplite a?c



The K2 Scientific Medical Refrigerator 7KW Battery Backup offers a reliable power solution with zero millisecond transfer time, ensuring uninterrupted power supply for critical equipment. The battery backup provides user-friendly a?|



In our environment, many of the IDF closets have one power input placed directly into the switch stack and the other power input into a battery backup. The RAW power side is not line conditioned so is subject to brown outs which have in a?|



Amazon : Anker SOLIX C1000 Portable Power Station, 1800W (Peak 2400W) Solar Generator, Full Charge in 58 Min, 1056wh LiFePO4 Battery for Home Backup, Power Outages, and Outdoor Camping (Optional Solar Panel) : Patio, Lawn & Garden



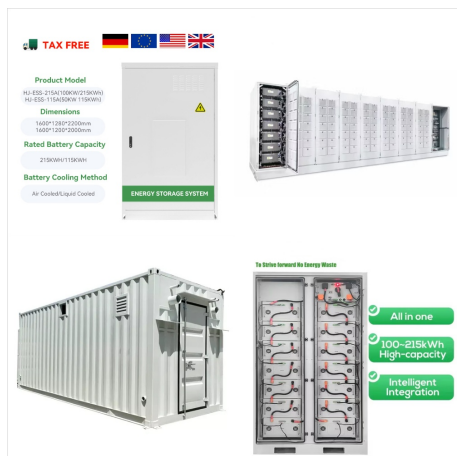
I am using esp-IDF library and esp32 for smart lighting. I want to maintain the state of the lights when power goes off as it can be written somewhere in NVS. ESP IDF Data backup to NVS when power goes off. Ask Question Asked 4 years, 6 months ago. Modified 1 year, 6 months ago. Viewed 599 times 3 I am using esp-IDF library and esp32 for



Selecting the right UPS battery backup for your network closet or IDF can be a confusing process. This uninterruptible power supply (UPS) buying guide is designed to help you properly plan so a?|



Backup Power; Power Distribution; Rack; Room for Growth; Remote Monitoring; Cleaning; Maintenance; 4 minutes battery back up; Consider a Backup generator; Consider Redundancy. Distributed; Centralized; Web enabled monitoring our Data Center Engineers can assist your company to ensure Network Closets, IT Closets, and IDF rooms are built



Uninterruptible Power Supply (UPS): backup power in the event of a power outage. ISP Modems: provides an internet connection to the outside world. If your primary and secondary internet service providers don't need to supply a a?]



Eaton 5PX UPS features the connection of up to four extended battery modules for maximum runtime and premium backup of your professional and enterprise-grade servers, storage and networking equipment. The 5PX is available in a convertible form factor for use as a tower UPS or rackmount UPS to ensure a perfect fit for a variety of applications.



One key component of a robust network is the IDF (Intermediate Distribution Frame) room. An IDF room serves as a central hub for network equipment and plays a vital role in ensuring optimal network performance. (UPS) units that provide backup power during electrical failures. These units not only safeguard against sudden power loss but also



The Eaton 5P UPS is an enterprise-class backup power solution available as a tower UPS, wall mount UPS, and rackmount UPS. Several models are available as a compact UPSa??which are 2U in height with shorter depths than a traditional UPSa??making them perfect for 4-post or 2-post rail and wall mounting. The 5P UPS even offers flexibility in battery types with two models offering a?|



Backup power, UPS, surge & IT power distribution; Clutches and brakes; Conduit, cable & wire management sizes and formats, from edge computing to intermediate distribution frame (IDF) and main distribution frame (MDF) spaces. Yet regardless of a closet's specifications, an effective design must incorporate proper organization, protection



Making a confusing process simple with 10 buying tips to help you select the right UPS battery back up for network closets or IDFs. Learn more now at Eaton. We make what matters work* A network closet can be a lonely place! And yet if there's a power outage, an IDF or network closet being knocked out of commission can cause significant



. Selecting the right UPS battery backup for your network closet or IDF can be a confusing process. This uninterruptible power supply (UPS) buying guide is designed to help you properly plan so you can make your IT network more resilient and reliable.



Backup Power; Applications. Data Centers. Enterprise, Hyperscale, Multi-tenant; Edge Compute and Micro Data Center; IT Networking. Office and Building Networking; Networking and IDF Cabinets. View All Filters (1) SKUs | 97 results. ProLine V/D Server Cabinet Type 12, 2000x700x800mm, Black, Steel.



The K2 Scientific Medical Refrigerator 7KW Battery Backup offers a reliable power solution with zero millisecond transfer time, ensuring uninterrupted power supply for critical equipment. The battery backup provides user-friendly interface, expert support, and a?



HOW TO CALCULATE BATTERY RATING An amp-hour is one amp for one hour OR 10 amps for 1/10 of an hour (~6 minutes) Transmit: Assume a rig drawing 20A and running 20 minutes: Amp-hours used would be $20A \times .333 \text{ hours (1/3 hour or 20 minutes)} = 6.67 \text{ AH}$ Receive: Receiving 20% of the time on HF: $a?c 1.5A \times .66 \text{ hours (2/3 hour or 40 minutes)} = 1.0 \text{ a?}$



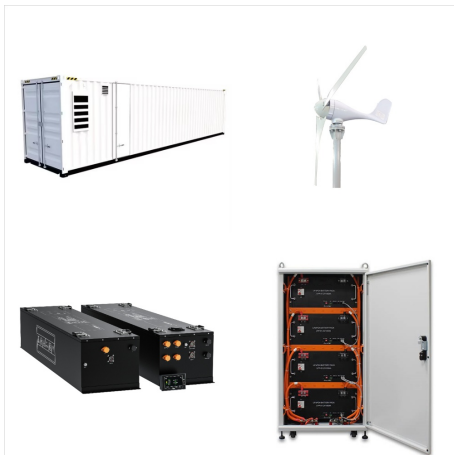
The runtime of a UPS system is an important consideration when choosing a battery backup, as it estimates how long the system's battery can support connected equipment during a power outage. The runtime varies based on the wattage of the equipment connected to the UPS system's outlets, with higher wattage resulting in shorter runtime.



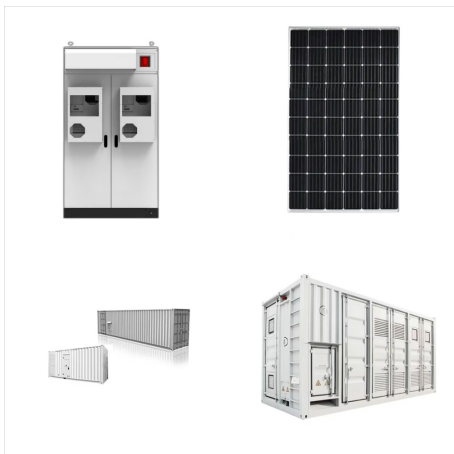
IDF thanks Mitsubishi Power Americas, Mizuho Bank and MUFG Bank for their support on this groundbreaking transaction to finance the new 1,200MW combined cycle power plant in Texas. #deferredfinancing #powergeneration #gasturbine a?? April 2023 Quick start backup power, Onshore and Offshore Wind, Solar, Waste to Energy and Energy Storage



Lakewood, NJ a?? Battarix, the leading provider of wallet-sized backup power solutions for smartphones, has embarked on a mission to support Israel Defense Forces (IDF) soldiers with its "Power



The most common questions about a UPS battery back-up are related to pricing and how long the batteries will last during a power outage. UPS batteries are heavy (though lithium-ion batteries are about 40% lighter than lead-acid ones) a?|



Insufficient Power Backup. Power outages can cause significant disruptions to your network operations if proper backup systems are not in place. Insufficient power backup is a common mistake made when setting up an IDF room. To avoid this mistake, invest in uninterruptible power supply (UPS) systems that can provide temporary power during outages.



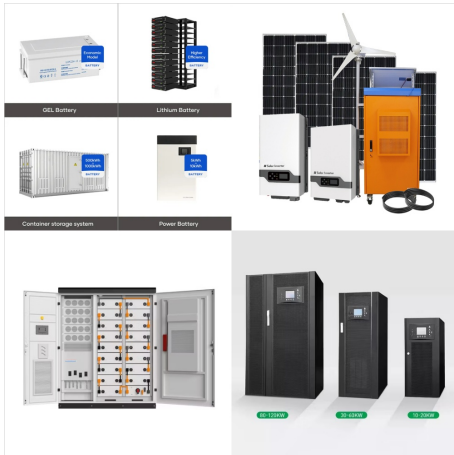
I am sure that in the event of a power failure due to a winter storm, maintenance wouldn't want to hear "sorry, you can't check or control heat in half the building after 2 hours. That said, we use APC UPS's in our IDFs. In the event of a generator failure they give us about 30-45 minutes of power depending on the IDF.



Each IDF is connected back to the MDF via backbone cabling. From the IDF, cables fan out to the end-user equipment within its designated area. Think of it like this: The MDF is your central power station, and IDFs are the power substations that distribute electricity to different neighborhoods within a city. Key Components of an IDF



Redundancy measures in an MDF are often more extensive than those in an IDF. Multiple power supplies, backup generators, and failover systems are commonplace in the MDF to ensure continued operation in case of system or power failures. IDFs may also have some form of redundancy but on a smaller scale, usually focusing on localized backups and



The cost of backup power extends beyond the cost the of equipment. Eaton's TCO calculator evaluates all the costs associated with a backup power system so you can make the most informed, cost-effective decision. IDF and network closet buying guide. IDF and network closet buying guide. Desktop UPS buying guide. Desktop UPS buying guide. Edge