

Why do I need a battery backup?

In order to protect your computer against power supply interruptions, you need a battery backup. UPS units are like power strips that contain a big battery inside, providing a buffer against power supply interruptions. This buffer can range from a few minutes to an hour or more depending on the size of the unit.

Does ups have battery backup?

Only half the outlets on your UPS have battery backup. Make sure your PC and monitor are plugged into outlets with battery backup. That's a nice ups, line interactive. Means it has an inverter, the battery is always 'on', but when there's mains power the inverter charges the battery, when mains is off it switches to battery power.

Do you need an uninterruptible power supply (UPS)?

If you have important electronics that have to keep running when the power's out, you'll need an uninterruptible power supply (UPS). We've reviewed our recommendations and are confident these are still the best UPS devices you can buy. Many smart devices have built-in battery packs, with modern laptops packing enough cells to last a whole day.

Why is my ups not working after a power outage?

What it is: When you notice that your UPS isn't working after a power outage, the first troubleshooting step you should take is to check its incoming power supply. Remember: the UPS will drain its battery during a power outage. If the outage goes on for too long, the UPS will lose all its power and must recharge when power is restored.

How do I Turn on my ups if my computer is not working?

Once powered down, unplug the computer system from the wall and plug it into the UPS. Then, plug the UPS into the wall outlet and turn it on. Once done, you can power your computer back on, and it will work normally, but with the added protection of the UPS.

Does ups work if battery is off?

If I'm just web browsing or doing anything that keeps the power draw under ~120 watts, the UPS works fine

BACKUP POWER SUPPLY FOR PC NOT WORKING



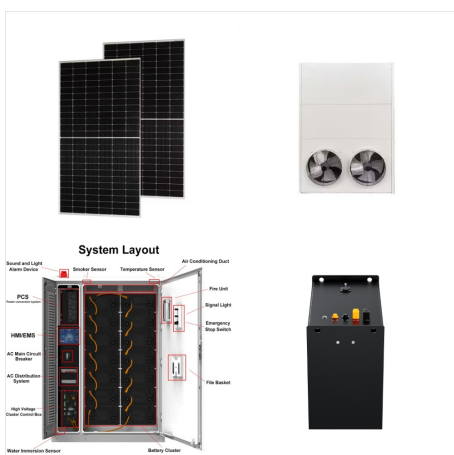
and nothing restarts. That's a nice ups, line interactive. Means it has an inverter, the battery is always 'on', but when there's mains power the inverter charges the battery, when mains is off it switches to battery power.



Yes it could try moving the two 4pin EPS connectors around all three sockets to find a combination where it will start. If that motherboard requires power connectors in all 3 sockets would be really strange I'm not sure even a 3950X has the capability to draw enough power to max out an 8 pin EPS socket. Maybe if pushing 5Ghz on LN2. Maybe.



How to Troubleshoot a PC Power Supply. When a PC suddenly goes on the fritz for no apparent reason, checking the PC power supply first may save a lot of time troubleshooting the system. A faulty PC power supply belies ???



When the working pc is plugged into either power adapter, the light on the power adapter turns green, solid and the working pc Does work with both power supplies just fine; so it definitely is the pc itself that is not working. When the non-working pc is plugged into either power adapter, the light on both power adapters changes to a blinking

BACKUP POWER SUPPLY FOR PC NOT WORKING



So, when the power supply to your home or building stops and the backup battery kicks in, it'll start beeping continuously to let you know that it's working. How to stop it: In this scenario, the beeping will only stop once the incoming power supply is restored. Sadly, restoring utility power is not in your control.



Key learnings: UPS Definition: A UPS (Uninterruptible Power Supply) is defined as a device that provides immediate power during a main power failure.; Energy Storage: UPS systems use batteries, flywheels, or supercapacitors to store energy for use during power interruptions.; Types of UPS: There are three main types of UPS: Off-line UPS, On-line UPS, ???



An Uninterruptible Power Supply (UPS) is a device that primarily provides battery backup to connected devices when the electrical power fails or drops to an unacceptable voltage. It does this using its internal battery which can keep your devices working anywhere from a few minutes to several hours depending on the power rating and the number

BACKUP POWER SUPPLY FOR PC NOT WORKING



Buy Amazon Basics Standby UPS Battery Backup 400VA 255W Surge Protector Uninterruptible Power Supply, 6 Outlets for Power Outage Protection, Compact, Black: Uninterruptible Power Supply (UPS) - Amazon FREE DELIVERY possible on eligible purchases



Battery Backup Not Working(5 Problems With Solutions) How Long Do Battery Backup Surge Protectors Last? The beeping should stop once you plug the computer into a power source. If the beeping persists, look for and unplug any devices that are connected to the same outlet as the computer. Appliances such as refrigerators can cause the voltage

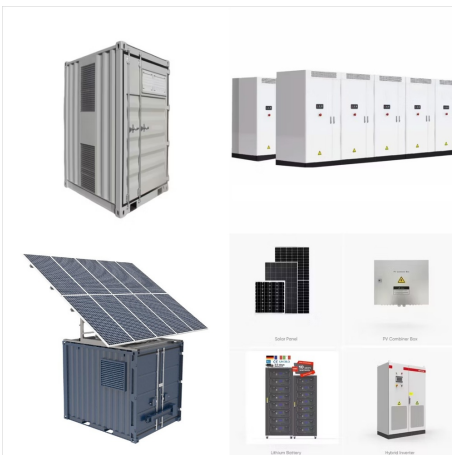


If you try to turn on your computer and it does not power on, try these proven troubleshooting steps to pinpoint and solve the problem. In most cases, when a desktop computer isn't receiving power, a non-working power supply is to blame. How to Back Up Your iPhone to an External Hard Drive. The 10 Best Working From Home Tips in 2024.

BACKUP POWER SUPPLY FOR PC NOT WORKING



In the event your product doesn't work as expected or you need help using it, Amazon offers free product support options such as live phone/chat with an Amazon associate, manufacturer contact information, step-by-step troubleshooting guides, and help videos. in Computer Uninterruptible Power Supply Units. 39 offers from \$7499 \$ 74 99

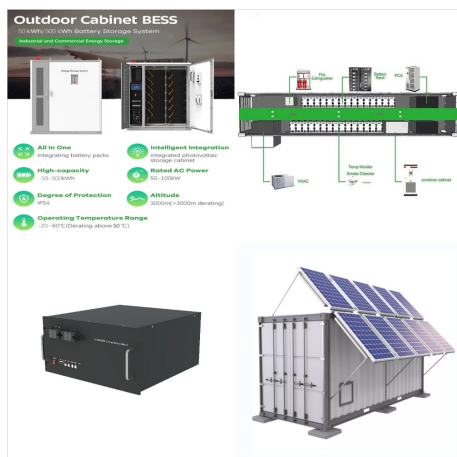


My computer is running an 800 watt power supply, and the battery backup is 550VA/330 Watts w/890 Joules of surge protection. What would be a good minimum if I wanted to keep the computer, two monitors, and work laptop on one unit? I could also move the laptop to a different unit. Upvote 0 Downvote. kanewolf Titan. Moderator. May 29, 2013



An Uninterruptible Power Supply (UPS) is an electrical device that provides backup power to critical equipment in the event of a power outage or other power-related issues. The UPS is designed to maintain power to the equipment it's connected to for a short amount of time, allowing for the safe shutdown of the equipment or to provide temporary

BACKUP POWER SUPPLY FOR PC NOT WORKING



In our guide to selecting a UPS for your computer, we take a deep dive into the ins and outs of calculating power loads and UPS sizing requirements. If you're curious about the more advanced features of UPS units or how to crunch the numbers involved in selecting one, it's worth a read. Related: How to Select an Uninterruptible Power Supply (UPS) for Your Computer



Desktop Drives typically require a power adapter. No light could indicate the power adapter is not connected to power. Try a different power outlet. (Desktop Drives) If using a surge protector or power strip, plug the power adapter directly into the wall outlet instead. (Desktop Drives)



It could also be your power supply, because sometimes a power supply has too many amps/watts in the 5v side and not enough on the 12v side. Sometimes power supplies have multiple rails and then you have to carefully load balance the hardware across the multiple rails. I had cyberpunk 2077 reboot my pc a few times till I upgraded my power supply.

BACKUP POWER SUPPLY FOR PC NOT WORKING



So, your battery backup is always at work, protecting your desktop computer, network equipment, or other electronic equipment and charging its battery when not in use. While UPS power is great for avoiding a sudden shutdown, you should not expect it to power your equipment for long hours without additional electrical backup, such as a generator.



An uninterruptible power supply (UPS), also known as a battery backup, provides backup power when your regular power source fails or voltage drops to an unacceptable level. A UPS allows for the safe, orderly shutdown of ???



As the thread title describes, my newly built computer will not turn on via power button on case after a shutdown unless I first switch off the power supply and switch it back on. Once I do so, the computer runs just fine with no issues. However, everytime I shutdown my system, this is something I have to do, otherwise, the system will not turn on.

BACKUP POWER SUPPLY FOR PC NOT WORKING



Drive Does Not Power Down When the Computer is Shut Down. A common reason a drive will not shut down with the computer is that the drive may have a power sensing feature. Power Sensing. Allows the drive to sense if the computer is on or off. Determines whether the drive should stay on. May see the data port as active.



No Power, in this case, can be defined as either the system not receiving any power from the power source or the power not being distributed in the system correctly. It may be more complicated to determine what is causing the No Power issue, but it is easy to identify. You may notice the following symptoms if you are experiencing a No Power issue:



TL;DR: When you want a reliable UPS, APC is one of the top brands for the job, and its BR100MS2 is a fantastic UPS for home and office use has ten standard outlets with surge protection (six with battery backup) and USB-A and USB-C charge ports. The 900W capacity can keep your devices running for quite some time.

BACKUP POWER SUPPLY FOR PC NOT WORKING



In the case of a power outage where you're working at the computer, it's worthwhile to have the battery also supply the monitor so you can interact with the machine. It's important to note, however, that a 400w power supply is not pulling a constant load of 400w. Our home server has a 400w power supply, but when measured with a Kill-a-Watt



UPS devices maintain and replenish energy storage as long as utility power is available. The more energy your UPS is able to store, the longer you'll be able to maintain a power supply. A UPS device is essential to prevent the loss of crucial data since a sudden power outage can force systems and computers to shut down without saving open files.

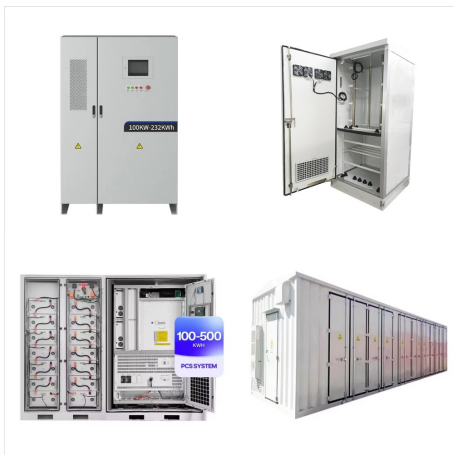


APC battery backups provide computer users with a defense against commercial power loss by switching a computer's power from commercial electricity to battery power when the battery backup detects a loss of commercial AC power. While on battery backup, a user can save work and close programs to avoid the data loss and possible computer

BACKUP POWER SUPPLY FOR PC NOT WORKING



Conclusion About Checking the Power Supply on Windows 10. Ensuring your PC's power supply is functioning correctly is vital for maintaining the health and longevity of your device. By following the steps outlined in this article, you can easily check the power supply on your Windows 10 PC.



Turn off the switch directly on the power supply. Wait 30 seconds; Place one hand by the switch on the power supply and the other next to the normal power switch for the computer. Turn the switch on the power supply back on; After about a 1/4 to 1/2 second pause press the main power switch on the computer.



But power failures can also cause head crashes in hard drives, which can damage a disk and the data on it. To guard against power failures, I do recommend that you get an uninterruptible power supply (UPS) to provide a backup power source for your computer. A UPS, at its core, is a battery backup power supply.