

Can a water-powered sump pump be used as a backup?

Since water-powered sump pumps are designed only as emergency backups and not as the primary sump pump, they must have constant water pressure even during power outages. For homes on a well, the best option is a battery backup or a standby generator to power the primary sump pump. Want to Learn More?

How does a backup sump pump work?

Backup sump pumps automatically activate when your main sump pump fails--whether due to a power outage, a mechanical problem, or overwhelming water levels--ensuring that water removal doesn't stop even when your primary system is compromised. These systems act as a fail-safe, stepping up to keep your basement dry.

Will a water-powered sump pump run if power goes out?

Homes with well water generally lose water pressure once the power goes out (assuming there is no generator), and in this scenario the water-powered pump will not run. Since water-powered sump pumps are designed only as emergency backups and not as the primary sump pump, they must have constant water pressure even during power outages.

How much water does a water-powered backup pump use?

A water-powered backup pump uses water pressure to siphon water out of your sump. Most use one gallon of city water for every two gallons of sump water they remove. So a pump that's capable of removing 1,500 GPH will use 750 GPH of city water. And that's created a lot of controversy.

What happens if a sump pump doesn't have a backup?

Heavy rainstorms, flash floods, and severe weather events can overwhelm your primary sump pump. Without a backup, you're left vulnerable to basement flooding. Power Outages: Power outages often occur during storms, which can render your primary sump pump useless if it relies on electricity.

What is the best backup sump pump system?

BACKUP SUMP PUMP WORKS WATER PRESSURE INCASE POWER FAILURE



Water Commander(TM) is the best backup sump pump system available on the market today. It's non-electric, can out-pump your electric sump pump, and will run at full power for years to come. It is more reliable than battery backups and is the perfect solution for homes with municipal water.



Designed as an Easy-To-Install, Do-It-Yourself backup sump pump, it includes a back-flow preventer and battery powered high water alarm. The pump is mounted on the ceiling, keeping it clean and dry until needed and uses water pressure to pump water.



A reliable battery backup sump pump keeps your pump charged and ensures continuous working during power outages. In this Jackery guide, we will understand what a sump pump battery backup system is, how it works, and how ???

BACKUP SUMP PUMP WORKS WATER PRESSURE INCASE POWER FAILURE



A water-powered backup sump pump is a device that runs off the reliable water supply that brings water to your home under pressure every single day. The best example is the Basepump Water Powered Backup Sump Pump. Rain, power outages, flooded basements! Don't wait until your basement is destroyed.



This high speed water in turn creates a low pressure zone within the internal chamber, causing a vacuum within the pump. This affect is explained in fluid dynamics as the Bernoulli principle, which simply demonstrates that higher fluid velocity creates lower pressure.. Once the vacuum is created in the pump by using pressurized municipal water, this creates a ???



To pump water out of a basement without electricity, you have 5 primary options: 1. Generator power 2. DIY battery backup with a DC to AC power inverter and deep-cycle battery 3. Dedicated, store-bought battery backup sump pump 4. Water-powered backup sump pump (municipal water households only) 5. Manually remove water

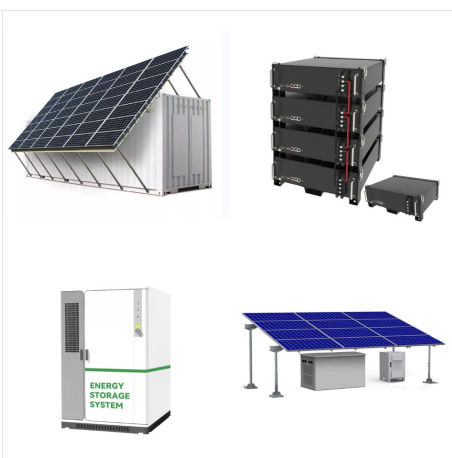
BACKUP SUMP PUMP WORKS WATER PRESSURE INCASE POWER FAILURE



A backup sump pump is an auxiliary pump designed to take over the function of the primary sump pump in the event of its failure or if it cannot handle the volume of water. A battery-operated or water-powered backup sump pump is crucial for homes in areas with frequent power outages. It ensures that water can still be removed when the main



Just the facts you must know when choosing between a water powered backup sump pump vs battery powered system for the basement. Emergency water back-up system that operates without a battery or power to protect your home from flooding in case of power failure or pump failure. Works during any sump pump failure. Works with Radon Sealed



It's important to have a functional backup to your primary electric sump pump in place before your basement floods. This article covers how to identify and resolve the following problems common with battery backup ???

BACKUP SUMP PUMP WORKS WATER PRESSURE INCASE POWER FAILURE



If all this sounds complicated, it's because it is. After seeing the hassle and frustration that comes with battery backup sump pumps, we developed Water Commander ???, an innovative and much more reliable solution to help protect your basement from flooding. Instead of using batteries or electricity, Water Commander runs on your home's municipal water pressure ???



Replace the Battery or Install a Backup Power Source; Your sump pump may not even be broken. It could be its battery has simply run out. as this tends to increase hydrostatic pressure and therefore future water problems. Instead, a discharge line will typically direct the water into a storm drain or further out in the yard where proper



Product Details. The 540 Flex (R) is there when the rains start, and emergencies pop up. A power outage can cause sump pumps to be rendered unusable, exposing your basement to the risk of flooding. With the 540 Flex (R) as the backup pump, you'll have the peace of mind that their home is protected. This emergency water-powered backup pump is easily used with any brand of ???

BACKUP SUMP PUMP WORKS WATER PRESSURE INCASE POWER FAILURE



The battery backup sump pump is installed in the same sump pit as the primary pump. When water enters the sump pit, it activates the primary pump, which drains the water away from your home into a suitable area like a storm drain, sewer line, or dry well. If either the primary pump fails due to mechanical issues such as clogs or if there is an



Secondary Electric Pump. In case your primary sump pump fails, it's a good idea to have a secondary electric pump on hand and ready to go. The secondary pump can be installed a little higher in the sump basket than your primary pump and will kick on in case of failure. Many people go this route thinking they are covered, but remember: an



Sump pumps are great, right? Until they fail to work, causing water damage in your basement that you didn't anticipate. So, when you're considering different backup sump pump options, seeing one that runs on water to remove water sounds pretty reliable this guide, we'll cover some of the pros and cons of installing a water-powered sump pump, so you can decide ???

BACKUP SUMP PUMP WORKS WATER PRESSURE INCASE POWER FAILURE



It operates entirely on municipal water pressure with no required batteries or electricity. This allows for worry-free operation in case of a power outage or pump failure. 3: High Pumping Performance Ratings. The BURRACAM emergency backup sump pump is rated for use at 20-80 PSI water pressure and can move up to 1200 GPH (gallons per hour).



? Bonus Tip: Consider a Smart Sump Pump System. A reliable water alarm should accompany any sump pump backup option that you choose. Water alarms aren't just important for storms, though???they can also alert you of constant water flow from a sump pump caused by a damaged or failing pump.



The best water-powered backup sump pump by far is Water Commander ???. Water Commander's ultra-performance model, model MG36, is able to pump faster than high-end battery backups and 2-3x more than any other water-powered backup.

BACKUP SUMP PUMP WORKS WATER PRESSURE INCASE POWER FAILURE



The pumping capacity on the Liberty SJ10 Water Powered Backup Sump Pump really depends on your water pressure(PSI). Minimum required water pressure for this pump is 30PSI. At 30PSI, you will get approximately 990GPH @ a 10" head. If you water pressure is greater, your pumping capacity will also increase.



A: Battery backup systems will last anywhere from a few hours to a few days, depending on the size of the battery and the amount of water in the sump pit.
Q: Will a water-powered backup system work if I have low water pressure? A: No, water-powered backup systems require a minimum water pressure of 20 PSI to work effectively. Q.



A water-powered sump pump operates on water pressure. It uses city water pressure to move water from your basement if your primary sump pump loses power. If you're considering a water-powered sump pump, think about these factors: Run Time. Water-powered backup sump pumps can operate for an unlimited amount of time.

BACKUP SUMP PUMP WORKS WATER PRESSURE INCASE POWER FAILURE



A pump can be powered electrically, by battery, or by water. Primary pumps are typically wired in, but many sump pump systems contain a backup pump that is powered by either water or a battery in case of a power outage. Do I need a sump pump? Sump pumps are necessary in homes prone to flooding.



Amazon : water backup sump pump system. Health & Baby Care Sports & Outdoors Video Games Works with Alexa automatic switchover to battery inverter power, professional backup system in case of power failure, pure sine wave output Remote controller with LCD screen. 5.0 out of 5 stars. 3. \$299.99 \$ 299. 99.



Water Backup Sump Pump. Water-driven sump pumps require no battery and need no electrical power. Instead, they use a home's water pressure from incoming city water to create suction which pumps water out of the sump pit. Water backup sump pumps can run indefinitely, as long as there is city water pressure coming to your home.

BACKUP SUMP PUMP WORKS WATER PRESSURE INCASE POWER FAILURE



A water-powered backup pump uses water pressure to siphon water out of your sump. Most use one gallon of city water for every two gallons of sump water they remove. So a pump that's capable of removing 1,500 GPH ???



With a water-powered sump pump, you have a backup system that can work with no other power source except water pressure. This can offer maximum peace of mind that no matter what happens, you'll be able to displace any unwanted water as quickly as possible. but it can be risky to have your backup system use the same pipe in case the pipe



UltraSump(R) Specifications. Long-Lasting Protection-- The UltraSump(R) can outlast generic backup pumps many times over, pumping an incredible 11,500 gallons of water out on a single fully charged battery.; Advanced Alarm System -- The UltraSump(R) sounds off whenever the battery back up pump cycles on, letting you know so you can respond. Optionally, it hooks up ???

BACKUP SUMP PUMP WORKS WATER PRESSURE INCASE POWER FAILURE



I put in a water-powered backup sump pump (Basepump is the brand I bought) and it works great. In cases of longer power outages, it works fine, since it doesn't require battery/electricity. I have the float set above my regular pump's float, and a water-level alarm will go off too to let me know.



If a primary pump has completed its life span and is no longer able to operate, a water-powered backup sump pump can take over and remove water when the primary pump fails. How Does a Water-Powered Backup Sump Pump Work? A water-powered backup sump pump uses water pressure to operate, and it starts working when a primary pump fails. If a power