

How to use Daly 48V 16S LiFePO4 BMS?

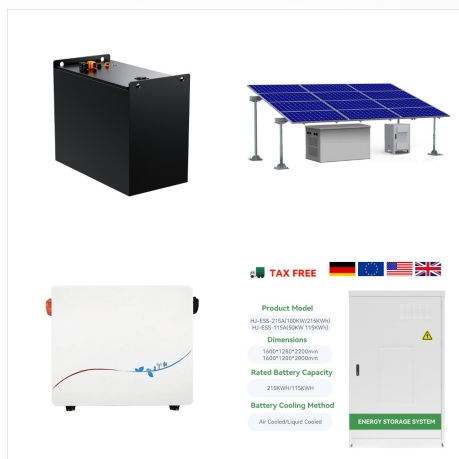
Daly 48V 16S LiFePO4 BMS is also used in our battery pack. Their quality and performance are approved with batteries correctly. pole. Then connect each cell's positive pole in order until the last one's positive B+. 2. Do not insert the connector directly after the wires were connected. Measure the voltage between two

What is 4s-96s LiFePO4 BMS?

4S-96S LiFePO4 BMS. This type of BMS is most widely used with the feature of reliable and good cost performance. Resistor bleeding cells balancing is the most widely used cells balance technique 4S-96S LiFePO4 BMS. Cells balance by capacitor energy storage and transfer technique which is working during charging, discharging and static state.

How to test a BMS?

Measure the voltage between two adjacent metal terminals on the back of the connector. If it is Li-ion battery, the voltage should be bet- 3. After the wiring sequence and voltage are confirmed to be correct, then insert into BMS. when the internal resistance is 0, there will be a beep, which means that the BMS is good. Otherwise,



Overview Of Daly BMS. Daly BMS Connection Instructions: 1??? Please do not insert balance wires into BMS before connecting batteries, must make sure connecting with batteries correctly. II??? The sequence of connecting wires for ???



Buy VATRER POWER 48V 105Ah Lithium Golf Cart Battery, Built-in Smart 200A BMS, with Touch Monitor & Mobile APP, 4000+ Cycles Rechargeable LiFePO4 Battery, Max 10.24kW Power Output, Perfect for Golf ???



Shop Lifepo4 Battery 100ah 48V Lithium Battery with BMS Protection 4000+ Deep Cycles Batteryfor RV/Camper Solar Marine Overland/Van, Off-Grid Applications Backup Power online at best prices at desertcart - the best ???