

Why do I need a Bard Access Systems port?

**INTRODUCTION & PORTS** Introduction Your doctor has recommended a Bard Access Systems port because your treatment requires frequent delivery of medications into your bloodstream. With your port, you'll be able to receive IV treatment without repeated needle sticks in your arm or leg veins. Please read all of the i

What is a bard power port?

out the port. If you have questions about your port, please talk to your doctor. **Port** Your Bard® PowerPort® device is a small device (about the size of a quarter) used to carry medicine into the bloodstream. It has one or two small basins that are sealed with a soft silicone top, called a septum. The port is placed under the skin on your

What is a bard® PowerPort® implanted port?

Your Bard® PowerPort® implanted port is a small device (about the size of a quarter). It is used to carry medicine into the bloodstream. The port has one or two small basins that are sealed with a soft silicone top, called a septum. The port is placed under the skin on your chest or arm. The port connects to a small, soft tube called a catheter.

How do I know if a port is a bard® PowerPort®?

bracelet, and key ring card when the Bard® PowerPort® or PowerPort® Groshong® implantable port is placed. These can let the clinician know the port is a Bard® PowerPort® implantable port. They may also wear the bracelet and carry the key ring card. The port is accessed. This card has important information for the nurse.

How do I know if I have a bard® PowerPort® implant?

Ask your doctor or nurse to help you feel the shape and bumps of your port. Feel the soft top of the port for the three bumps. Feel the sides of the port for the triangle shape. A trained clinician can also recognize the Bard® PowerPort® implantable port in an X-ray. A special symbol located on the port is visible under x-ray.

Can a trained clinician recognize a bard PowerPort® device in an X-ray?

# BARD ACCESS SYSTEMS POWER PORT



triangle shape. A trained clinician can also recognize the Bard PowerPort\* device in an X-ray, due to a special symbol located on the port, only visible device. AccessHow is Your Port Accessed? Your doctor or nurse will use the port when they need to give medicine or fluids or withdraw



Bard Access Systems??(R): ????? 1/4 ???  
PowerPort(R)  
??<????????????????(R)????????????  
????????????????????????????(R)????????<<  
???????? 1/4 ??<?? 1/4 ?? 3/4  
????????<????????????????????????



Lawsuits against Bard Access Systems, Inc., and its parent company, Becton, Dickinson & Co., are being filed for failure to inform and warn patients and healthcare professionals about the potential risks associated with the Bard Power Port. The nationwide Bard Power Port Lawsuit involves patients who have reported dangerous conditions, such as

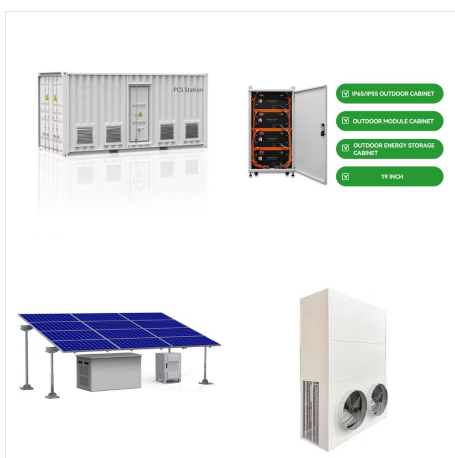
# BARD ACCESS SYSTEMS POWER PORT



PowerPICC??? Catheters experience the efficiency of power injection. "The appropriate vascular access device (VAD), peripheral or central, is selected based on the prescribed therapy or treatment regimen, anticipated duration of therapy, vascular pathway, patient's age, comorbidities, history of infusion therapy and vascular access, patient preference for VAD type and location, ???



Bard Access Systems" PowerPort\* power-injectable port not only facilitates infusions, but is the first port indicated for the power injection of contrast media for CECT scans. Contrast enhanced computed tomography (CECT) scans are simple, safe and non-invasive procedures that provide quick and accurate diagnostic



Bard PowerPort complications and injuries range from minor to severe, according to the device's instructions for use. They include bloodstream infections, embolisms, deep vein thrombosis and other injuries that may be fatal. Pinch-off syndrome is a serious complication that occurs when the catheter becomes compressed between the clavicle and the rib.

# BARD ACCESS SYSTEMS POWER PORT



Description. From Bard . The PowerPort\* device is the first MRI-safe port which is indicated for power injection combines venous access with the ability for power-injected Contrast-Enhanced Computed Tomography (CECT) scans. Power injected CECT scans produce superior images to help better manage patient care.



AllPoints??? Port access devices AllPoints??? Port Access System. SKU: AN142075 GTIN: 00801741119224 Share LinkedIn. Facebook. Twitter. Email. Copy Link. AllPoints??? Port Access System - PowerLoc??? Max Safety Infusion Set, 20 G x ???



Bard is proud to introduce the ???rst and only high-???ow, power-injectable port designed and indicated speci???cally for therapeutic apheresis.\* With an ever-growing number of apheresis procedures and a rising chronic apheresis patient population, there's a need for long-term vascular access options.



# BARD ACCESS SYSTEMS POWER PORT



BARD ACCESS SYSTEMS, INC. BARD POWER PORT; PORT & CATHETER, IMPLANTED, SUBCUTANEOUS, INTRAVASCULAR: Back to Search Results: Model Number 1808560: Device Problems Entrapment of Device (1212); Material Separation (1562) Patient Problem Device Embedded In Tissue or Plaque (3165)



Learn more about PowerFlow??? Implantable Apheresis IV Port and other BD products today. Products; Solutions. Administrator. Power injectable up to 5mL/s @ 300 psi. 2. After 1000 IV catheter insertions, bench top leak testing was performed both with the device accessed (both 14G and 16G IV catheters tested separately) and with no IV



Consult Bard Access Systems's entire PowerPICC catalogue on MedicalExpo. rate of 5 ml/sec ??? Easy identification -catheters are clearly labeled to differentiate them from all non-indicated power injection PICCs ??? Easy-to-read ID tags ???

# BARD ACCESS SYSTEMS POWER PORT



PowerFlow??? IV Port Access Systems are convenient all-in-one kits designed specifically for the PowerFlow??? Implantable Apheresis IV Port. Kit components are organized to facilitate sterile "best practices" for PowerFlow??? IV Port access procedures, and to help clinicians comply with nursing society and CDC guidelines for sterile port access.



The PowerPort\* Implanted Port is an implantable access device designed to provide repeated access to the vascular system. Port access is performed by percutaneous needle insertion using a non-coring needle. Power injection is performed using a PowerLoc\* Safety Infusion Set only. The PowerPort\* system can be used for infusion of



Bard Access Systems, Inc. 1618000 PowerPort ClearVUE Slim Implantable Port. Bard Access Systems, Inc. 7360000 Vaccess CT Low-Profile Power-Injectable Implantable Port. Vaccess CT Low-Profile Power-Injectable Implantable Port 6F (with Suture Plugs) (6F) \$99.00. General Hospital. CT80STPD-NFVI. NAVILYST MEDICAL, INC. CT80STPD-NFVI Smart Port CT.

# BARD ACCESS SYSTEMS POWER PORT



+ Amanda??? Port Stabilizer + Amanda??? Port Stabilizer PowerLoc??? Max 20 G x 1 in. + Amanda??? Port Stabilizer + GuardIVa??? PowerLoc??? Max 20 G x 0.75 in. + Amanda??? Port Stabilizer Component AN132010 AN132010B AN132010G AN132075 AN132075B AN132075G AN142010 AN142010B AN142010G AN142075 AN142075B AN142075G AS132075 AS142010 ???



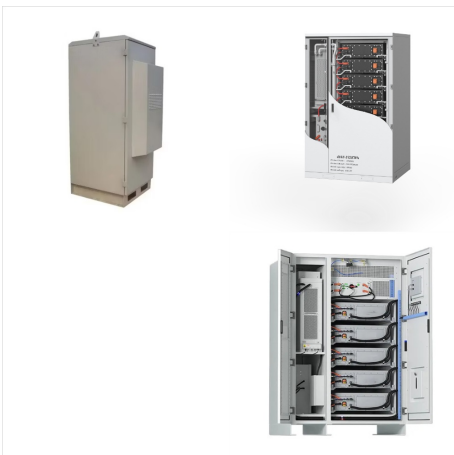
Bard Access Systems, Inc. 605 North 5600 West. Salt Lake City, UT 84116 USA 801-522-5000. Clinical Information Hotline: 800-443-3385 each septum to aid in identification of a power-injectable port. ACCESS SYSTEMS Single septum Dual septum MR (3T) CT (300psi) Access to a PowerPort\* Implantable Port



A port is a small device that makes it easier for healthcare providers to access a vein. Ports help people who often need IV treatments, like chemotherapy, or blood draws. A port consists of a small plastic or metal body, a catheter, and a ???



The Power-Trialysis??? Short-Term Dialysis Catheter is indicated for use in attaining short-term (<30 days) vascular access for hemodialysis, hemoperfusion, and apheresis treatments.\* The BD (R) Intraosseous Vascular Access System is a solution for intraosseous access with a passive needle tip Port Access Kits and Needles. BD (R) Port



BD (R) Port Access Kits and AllPoints??? Port Access Systems are designed to be a simple and effective way to standardize the port access procedure process and to promote compliance with guidelines for sterile port access.



Consult Bard Access Systems's X-Port? Implantable Port brochure on MedicalExpo. Page: 1/2. Exhibit with us {{>currencyLabel}} Back {{>currenciesTemplate}} English. Back; Small Low-Profile Ports The variety of small low-profile ports offered by Bard Access Systems fulfills the specialized placement needs of pediatric patients, cachectic



# BARD ACCESS SYSTEMS POWER PORT



The next generation of power injectable ports The choice for elevating patient care The choice for elevating performance ??? Because the side effects of chemotherapy are typically unpleasant, the PowerPort\* VUE Implantable Port ???



The Bard\* Port Access Kit Your Answers for Port Access\* Help clinicians to meet the following: ??? Oncology Nursing Society (ONS) Guidelines ??? Infusion Nursing Society (INS) Standards of Practice ??? Centers for Disease Control (CDC) Guidelines ??? Occupational Safety & Health Administration (OSHA) Guidelines ??? The Joint Commission (JCAHO) National Patient Safety ???



Consult Bard Access Systems's entire PowerPICC catalogue on MedicalExpo. rate of 5 ml/sec ??? Easy identification -catheters are clearly labeled to differentiate them from all non-indicated power injection PICCs ??? Easy-to-read ID tags -indicate maximum injection rates and prompt users to check catheter Port Access Kit. 2 Pages. Bard

# BARD ACCESS SYSTEMS POWER PORT



Vascular Access Management (VAM) Distributor. BD Original Equipment Manufacturing (OEM) BD Hypodermic Needle and Syringe Solutions; Drug Development Company. Drug Delivery Systems; Medical Device Manufacturer. BD Original Equipment Manufacturing (OEM) Laboratory . Antimicrobial Resistance; BD Original Equipment Manufacturing (OEM)



The Bard PowerPort is one of several varieties of port/catheter systems that have been designed, manufactured, marketed, and sold by Bard Access Systems, Inc. (a wholly owned subsidiary of Becton, Dickinson, and Company). The PowerPort is a totally implantable vascular access device designed to provide repeated access to the vascular system to



Bard Access Systems Section 6 -Summary of Safety & Effectiveness MRI PowerPort™ Device with 9.6 Fr Si Catheter Special 510(k) Premarket Notification Page 23 of 55 The PowerPort™ implanted port is indicated for patient therapies requiring repeated access to the vascular system. The port system can be used for