

What is a solar base plate?

The solar base plate provides foundation to a solar panel structure and is installed on a roof, ground or other surface. It supports the solar panels structure and other solar components. Kenbrook Solar is providing hot dip GI base plates in two different sizes and affordable prices:

How to choose a solar panel mounting structure?

Prioritize eco-friendly materials and manufacturing processes when choosing a solar panel mounting structure. Sustainable choices reduce carbon footprint and contribute to a cleaner environment. For great power production and solar panel functionality, the installation of panels should be perfect.

How to choose a solar panel mounting bracket?

Depending on the structure, there are different rooftop solar panel mounting brackets to select from. Besides roof structure, other considerations include: The incline necessitates specially engineered solar panel roof mounting brackets.

What is a solar panel mounting system?

Solar panel mounting systems play a key role in ensuring that photovoltaic (PV) installations operate at their best. They provide the structure needed to hold the panels in place at their optimal angles, allowing them to generate the most electricity.

What are mounting brackets & rails for solar panels?

Mounting Brackets are the primary components that attach the solar panels to the mounting surface. They come in various types depending on the mounting surface (roof, ground, pole, etc.). Rails: Rails are long, horizontal structures attached to the solar panels using clamps. They provide a stable base for the solar panels.

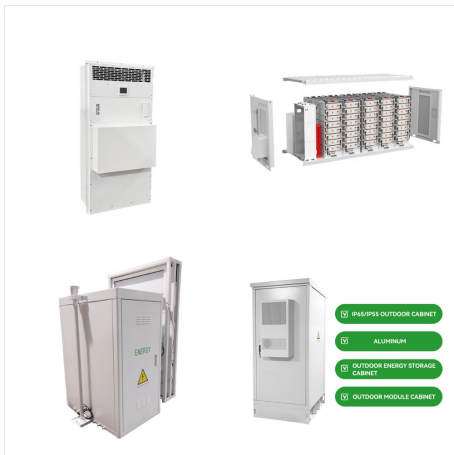
Do solar mounting structures support solar panels?

These practices ensure that the solar mounting structures not only support the panels but also contribute to the overall efficiency and return on investment (ROI) of the solar energy system. Peering into the future, we explored trends and innovations shaping solar mounting structures solar panel mounting is continuously

BASE PLATE FOR SOLAR STRUCTURE



evolving.



The solar mounting structure is a crucial component of solar power plants that provides support and foundation for the PV panels. Let's explore the backbone of a solar power plant, solar ???



Solar Panel Mounting Structure: 3500 INR (Approx.)
Gi Base Plate Scaffolding Base Plate Solar
Structure Base Plate: 100 INR (Approx.) Roof Top
Solar Module Mounting Structure: 175 INR
(Approx.) Stainless Steel Fasteners For Solar
Structure: 10 INR (Approx.) Aluminum Module
Mounting Structure: 120000 INR (Approx.) Solar
Mounting Structure: 25000



There are five types of mounting structures for solar panels: Mounted Roof Racks: These racks help in keeping the wires from running distances between the solar arrays and the inverter to a minimum. The mounted racks require roof penetrations, and that acts as prevention from causing any roof leakages. So, always make sure to have a well-sealed

BASE PLATE FOR SOLAR STRUCTURE



Design of Column Base Plates John T. DeWolf
Professor of Civil Engineering University of
Connecticut Storrs, Connecticut Some Practical
Aspects of Column Base Selection It is recognized
that the design of structures is within the scope of
expertise of a competent licensed structural
engineer, architect or other licensed professional for
the



- Rooftop Solar Structure: Solar plants installed on
rooftop are grouted in RCC roof, thus have a rigid
and sturdy base ready. The solar structure needs to
hold on to RCC firmly to prevent pivot movement.
These are generally made up of Mild Steel (MS) or
Galvanised Iron (GI). You should consider higher
cross sectional area of the legs in case



This study investigated the load-carrying capacity of
solar panel structures focusing on the
column-to-base connection of pole-mounted
structural systems using full-scale testing and
numerical

BASE PLATE FOR SOLAR STRUCTURE



Solar panels perform best when exposed to direct sunlight. For that to happen, modules get mounted at an angle facing the south. This is where solar panel mounting structures come into play. Solar Mounting Structures are critical components that ensure the efficiency of a solar power system in both utility and rooftop applications.



Mild Steel Base Plate For Solar Structure, For Construction Site ???100/ Piece. Material. Mild Steel. Usage/Application. Construction Site. Design. Customized. A solar base plate, also known as a solar mounting base or solar foundation, is a crucial component in solar; Maash Enterprises. Plot No 252, Floor 0, Tin Shed, Kolsa Bunder Road

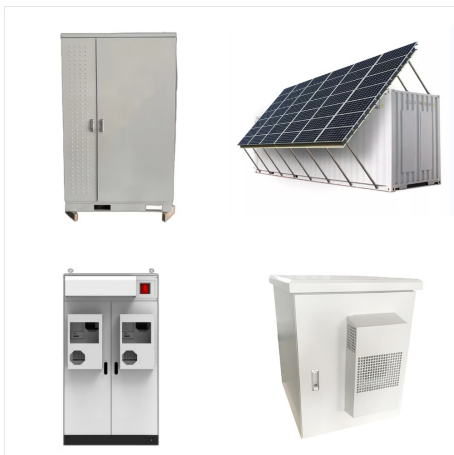


We "J B Engineers" are offering a wide range of Solar Panel Mounting Structure, Solar Panel Clamp, Solar Panel Aluminum Profile, Solar Base Plate, Aluminum Rail Nut, Stainless Steel Bolt, Metal Clamp and all the products related to Solar Panel Mounting.

BASE PLATE FOR SOLAR STRUCTURE



High-Quality Hot Dip GI Zinc Coated Base Plate; 41 x 41 MM Degree Angle To Provide Perfect Angle to Solar Structure; Precise Holes For Fixing The Base Plate & Degree Angle; Extremely ???



Manufacturer of Solar Base Plate - Solar Structure Channel Base Plate offered by ACC Structure, Ludhiana, Punjab. IndiaMART. Get Best Price. Shopping. Sell. Help. Messages. X. ACC Structure. Ludhiana, Punjab | GST 03BJPPS6698B2ZP | Verified Supplier. View Mobile Number 30% Response Rate.



Solar panel mounting structure manufacturer, All types of components for mounting structures, Brackets, clamps, strut channels supplier in Ahmedabad, India. Skip to content +91 - 99041 71714 / +91 - 99041 77227 info@sspindia . Solar Panel Mounting Hardware; HDG Base Plate;

BASE PLATE FOR SOLAR STRUCTURE



Base Plate For Solar Structure ??? 27 / Piece.
Maruti Enterprise. Contact Supplier. Mild Steel MS
Solar Panel Stand Square Base Plate, For Building
Construction ??? 55 / Piece. Karma Industries.
Contact Supplier. Rectangular M.S. Base Plates,
Thickness: 1-2 mm ??? 95 / Piece. Kaavya Engtech
Private Limited.



is solar water heating systems. This case study
focuses on the design of a ground mounted PV
solar panel foundation using the engineering
software program spMats. The selected solar panel
is known as Top-of-Pole Mount (TPM), where it is
designed to install quickly and provide a secure
mounting structure for PV modules on a single pole.
All the



hence they need a separate mounting structure.
Solar panels need a secure fastening to the roof or
ground to protect against winds. Mounting
structures do this function. (50x50 mm):- This
design includes 6 legs (w.r.t base plate), 8 purline
and 12 panels. By applying the boundary conditions
as, density for structure is 7850 kg/m3, density

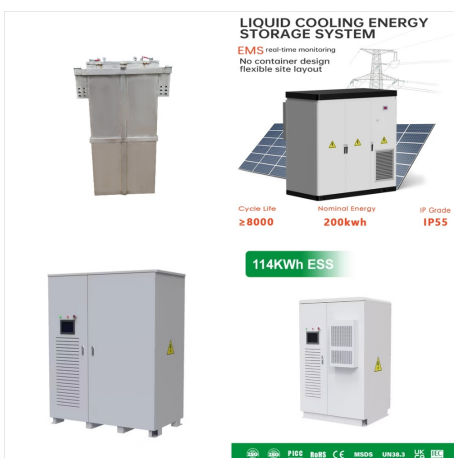
BASE PLATE FOR SOLAR STRUCTURE



Solar Base Plate (41x41mm) Rs. 120 /Pc: Solar Base Plate (80x40mm) Rs. 130 /Pc: Solar Degree Angle (41x41mm) Rs. 50 /Pc: Solar Degree Angle (81x41mm) Rs. 57 /Pc Power Snap ??? Anti Theft Lock (For 40x40 C Channel) Rs. 34 /Pc: SS Allen Bolt Solar Structure: Rs. 10 /Pc: Spring Nut Solar Structure: Rs. 10 /Pc: Chemical Bottle with Nozzle: Rs



Ground Mounting System is applicable for open field, it can be installed for residential or large commercial scale installations with easy installation and lowering labor cost. A long life span. Available in 14 gauge and also design and fabricate as per customer requirement. (Solar Panel Structure for 150W, 250W, 445W, 545W and above roof / ground mounted)



We "J B Engineers" are offering a wide range of Solar Panel Mounting Structure, Solar Panel Clamp, Solar Panel Aluminum Profile, Solar Base Plate, Aluminum Rail Nut, Stainless Steel Bolt, Metal Clamp and all the products related to Solar Panel Mounting.

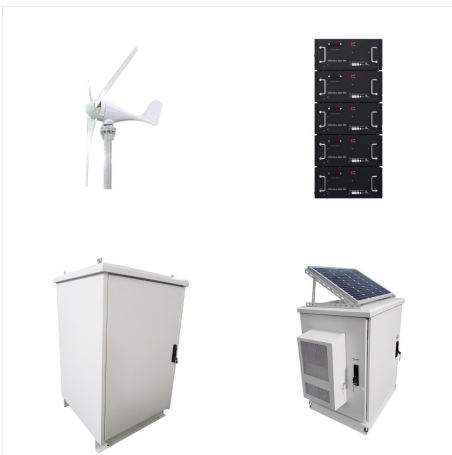
BASE PLATE FOR SOLAR STRUCTURE



We are a Manufacturer, wholesaler, and supplier of all types of Solar Structure Accessories like Base Plate, Wall Plate, J Hook, Aluminium Rails, EPDM Rubber Strip, Aluminium Clamps, Fastner and Cable Structure Accessories like Cable Tray, Junctions Cable, Tray Support, Z ???



Hot Dip Galvanized (HDGI) Solar Panel Mounting Structure Manufacturer, Supplier and Exporter of hdgi tin shed structure, Hot Dipped Galvanized C Channel in Ahmedabad, Gujarat, India. Skip to content +91 - 99041 71714 / +91 - 99041 77227 info@sspindia



Types of Solar Panel Structures. The type of solar panel structure you choose depends on several factors, including: Roof type: Different roof styles (flat, pitched, metal, etc.) require compatible structures. Location: Local building codes and wind/snow load requirements influence design choices. Number of panels: The size and weight of your solar array dictate ???

BASE PLATE FOR SOLAR STRUCTURE



Building the future, one structure at a time.
CONNECT NOW WHAT WE DO ABOUT
STRUCTURA Solar Mounting Solutions Structura was established with the core goal to produce industry-leading, innovative solar solutions at an affordable price. Our solar structures drive the triple bottom line ??? balancing economic, scientific, and environmental prosperity.



Solar Panel Mounting Structure Manufacturer. Pinax Steel is the Leading Manufacturer & Supplier Of Solar Mounting System In India. Base To Sustainability. Enquire Now. Our Team will get in touch with you ASAP. Chequered Plates, GI Pipes, Ladders, MS Flats with Hot Dip Galvanizing and Painting Facilities. Our Offerings. Powder coated



Once set, place the base plate with the column onto the anchor bolts and tighten. Apply the PCC onto the base plate and fully cover it. Height should be minimum of 50mm or 2 inches. Moist curing of PCC must be done for 2 days using gunny cloth for increasing the strength and decreasing the permeability.

BASE PLATE FOR SOLAR STRUCTURE



There are various types of solar mounting structures: 1. Rooftop Mounting Structure, 2. Ground Mounted Structure, 3. Floating Mounting Structure, 4. Pole Mounted Structure, 5. Carport Mounting Structure and 6. Smartflower 7. Tracking System