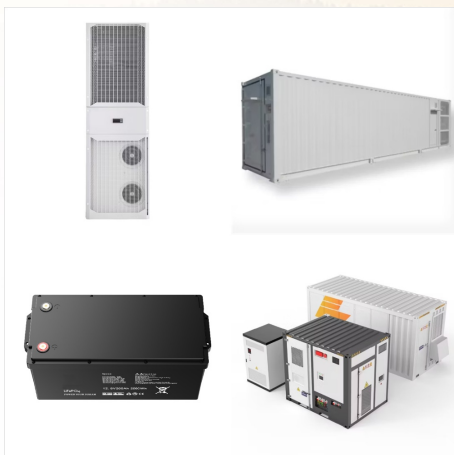




A power brace is another word for wall brace or I-beam wall support. Thrasher uses its patented PowerBrace system when a wall brace or I-beam wall support solution is required. Zinc-plated, galvanized steel beams are custom fit to your basement wall specifications and secured by special brackets anchored to your mudsill and floor joists at the

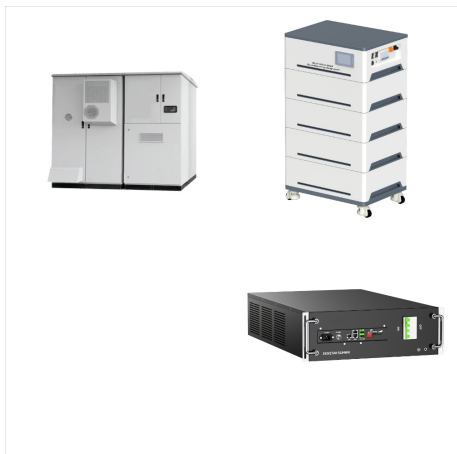


PowerBrace offers a permanent solution to fixing cracked or bowed walls due to the constant movement of soil. The Patented PowerBrace Brackets reverses the forces of nature by reinforcing the wall and over time can move the wall back to its original position with out excavation outside of the home or removal of concrete from the basement floor. Whether the foundation wall is built a?



Attaching Braces To The Floor: The PowerBrace?c System spans the entire height of the foundation walls, and it's anchored to the concrete foundation floor with bolt-in-place brackets. Frank's Basement Systems is dedicated to providing lasting and high-quality installations. They stand by each PowerBrace?c installation with a 25-year

# BASEMENT SYSTEMS POWER BRACE



Such treatments give basement walls a smooth, even surface that accepts finish materials such as paint, wallpaper, or paneling. This type of wall system makes it easy to install electrical wiring, television cable, speaker wire, and phone lines.



The PowerBrace<sup>®</sup> System will also allow for wall straightening by a patented adjustment mechanism, which can be tightened over time to advance the brace. Since these problems were taken care of, the corner in the basement now has support from both walls and the walls have the extra support they need to help prevent further damage.



Advanced Wall Support and Design. IntelliBrace I-beams offer more support than conventional I-beams. These support beams for basements are anchored to the floor joists and the concrete, providing unmatched reinforcement and strength. The wall system is designed with superior quality and engineered to support wall weight and counteract outside

# BASEMENT SYSTEMS POWER BRACE



This foundation wall system installs quickly in your home, immediately and permanently halting the inward movement of your foundation walls. Our crews take the following steps to install the PowerBrace System. 1) Cut Wall Braces. The PowerBrace is a wall repair system based on strong steel I-beams.



Woods Basement Systems, Inc. - Foundation Repair Photo Set - Wall Anchor and Power Brace Installation in Effingham, IL. Proudly Serving Greater St. Louis, Springfield & Nearby. Proudly Serving Greater St. Louis, Springfield & Nearby. Woods Basement Systems 524 Vandalia Street Collinsville, IL 62234. Office Hours Monday - Thursday: 8:00am



The PowerBrace<sup>®</sup> is a patented foundation wall repair system that's designed to stabilize failing basement walls and provide the potential to straighten walls over time. These steel i-beams will stabilize the wall in its current position without a

# BASEMENT SYSTEMS POWER BRACE



Basement Systems Inc., based in Seymour, Connecticut, is a network of basement waterproofing and crawl space repair contractors spanning across the United States and Canada. Since 1987, their innovative products and systems have helped homeowners transform their wet, leaky basements and nasty crawl spaces into dry, healthy living spaces.



Next, the top of each brace is fastened to a floor joist close to the top mudsill of the wall. A large-diameter bolt is secured to the floor joist and can be adjusted and tightened after installation. The IntelliBrace<sup>®</sup> Wall Repair System fixes bowing basement walls using strong materials that won't harm your home or yard. We can repair



American Waterworks repairs bowing and buckling foundation or basement walls with our patent-pending I-beam system in Southern MN, North Dakota, Northeast IA & Western WI and nearby. Call today for a free quote! the top of each a?|

# BASEMENT SYSTEMS POWER BRACE



Stable brace system forever foundation repair gorilla wall braces by resch enterprises inc family owned since 1967 basement waterproofing power reinforcement for the powerbrace installation in nashville jackson clarksville tennessee cky and alabama i beam failing walls huntsville murfreesboro franklin bowling green athens smyrna florence tn leading bracing a?|

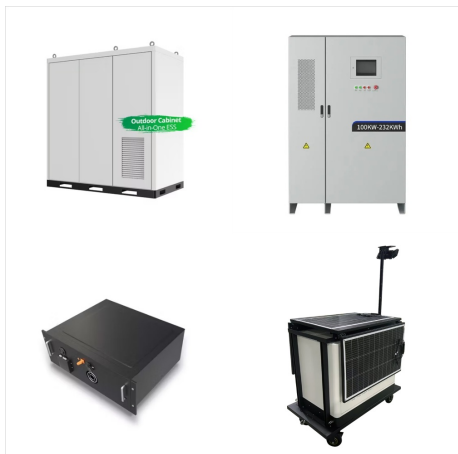


Our PowerBrace is a wall repair system which is the perfect solution for basement stabilization. Click here for more details! (204) 864-2500 admin@bluemaxxbasements.ca 2-3300 McGillivray Blvd, Oak Bluff, MB, R0G 1N0 M-F: 8:30am to 4pm



DIY Basement Solutions by Resch Enterprises Inc - Family Owned Since 1967! PARALLEL Gorilla Brace \$ 129.95. Gorilla Wall Braces. Select options This product has multiple variants. The options may be chosen on the product page Torque Wrench \$ 24.95. Gorilla Wall Braces. Add to cart. Steel Beams a?? cut to length.

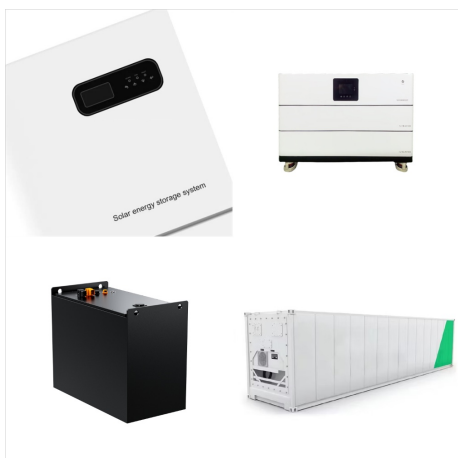
# BASEMENT SYSTEMS POWER BRACE



Next, the top of each brace is fastened to a floor joist close to the top mudsill of the wall. A large-diameter bolt is secured to the floor joist and can be adjusted and tightened after installation. The IntelliBrace<sup>®</sup> Wall Repair System fixes a?



Now Jeff is happy he made the call to Woods Basement Systems. Drywall Cracks Many homeowners with foundation problems find cracks on the drywall in the weakest spots in the home, this includes the ceiling, in corners, and near doors and windows.



By installing our PowerBrace wall support system, we stabilized these walls Schedule Annual Maintenance. Proudly serving Massachusetts & Rhode Island including - Newton, Providence, Springfield and nearby DryZone Basement Systems 850 Bedford St Bridgewater, MA 02324 DryZone Basement Systems 143 Greenland Rd Suite 3 Sterling, MA 01564.

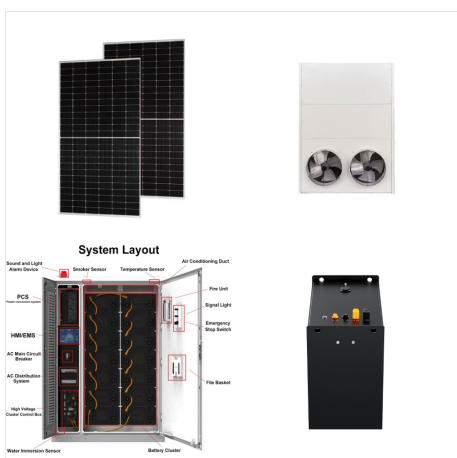
# BASEMENT SYSTEMS POWER BRACE



Bix Basement Systems is a full-service wet basement repair, crawl space encapsulation, & foundation repair contractor in Illinois, Iowa & Missouri. Call to schedule a free estimate today! 1-800-541-9433. Menu; Services. Basement Waterproofing. Concrete Leveling. Sump Pumps. Foundation Repair. Mold Problems. Basement Finishing.



The powerbrace wall repair system installation in ohio and indiana i beam for failing basement walls cincinnati dayton hamilton oh gorilla braces by resch enterprises inc family owned since 1967 stable brace forever foundation leading bracing permanent solutions to your problems thrasher news events hamden fairfield greenwich ord trumbull darlen poughkeepsie stamford a?]



PowerBracea?c Wall Bracing System Alternative Technical Specifications Steel Beam: Standard: S4x7.7 ASTM Grade 50 with length of 8 or 9 feet Optional: W4x13 ASTM Grade 50 with length of 8 or 9 feet Top "Bridge" Bracket Alternate Assembly (Joists Perpendicular to Wall): (2) Saddle supports fabricated from 12 gage ASTM A1011 sheet steel 3a??

# BASEMENT SYSTEMS POWER BRACE



When walls are buckling or bowing seemingly out of nowhere, Power Braces can fix it. Check out this project we completed in Battle Creek, MI. Pay Online. Open Now. We serve Kalamazoo, Lansing, Grand Rapids. 1-866-379-1669. Pay Online. Ayers Basement Systems 2631 Eaton Rapids Rd Lansing, MI 48911 Ayers Basement Systems 4475 Airwest Dr SE



Nicholas C. of Saint Peters, MO needed a solution to his bowing foundation walls. In the basement, several of the walls had horizontal cracks that were bowing in. He knew that this was a sign of foundation problems and was unsure how to stop the problem quickly. He decided to call Woods Basement Systems, the experts in all things basementy!



Foundation Repair - Completed power brace assembled with a channel cross brace. Schedule Annual Maintenance. Make a Payment. Serving Connecticut, Westchester and Putnam Counties. 1-855-200-7133. 1-855-200-7133. Menu; Connecticut Basement Systems 33 Progress Avenue Seymour, CT 06483.

# BASEMENT SYSTEMS POWER BRACE



This comprehensive guide provides step-by-step instructions and expert tips for bracing basement walls with parallel joists. Learn how to effectively reinforce your basement walls and ensure their stability and strength. With detailed illustrations and helpful information, you'll feel confident in tackling this essential home improvement project.



Easy Installation: The IntelliBrace<sup>®</sup>c system is installed in your basement, so you don't need to dig outside. It also takes up less space than traditional I-beams. Strong Support: IntelliBrace<sup>®</sup>c beams offer better stability than traditional I-beams, securely holding your home's basement walls in place. Wall Straightening: The system not only provides support but also allows homeowners a?



American Waterworks repairs bowing and buckling foundation or basement walls with our patent-pending I-beam system in Southern MN, North Dakota, Northeast IA & Western WI and nearby. Call today for a free quote! the top of each brace is attached to a floor joist near the mudsill at the top of the wall. The specially designed bracket is