

Why does my ups turn off if the battery is missing?

My first thought is if the battery is missing/loose/disconnected and effectively is removed from the equation, if there is a slight power flicker or event, the UPS would turn off. Though, the UPS is supposed to alarm when the battery is disconnected, or as you said, is present but requires replacement (after a failed self test).

Why does my ups go to battery?

Keep in mind that while normal power may seem to exist, many power problems are transparent or invisible to a user. These unforeseen power problems, such as voltage wave shape distortion, Harmonic Distortion, and frequency variances, will cause the UPS to go to battery.

Do all back-ups outlets provide backup power?

Solution: Not all the outlets on a Back-UPS product provide backup power in the case of a power disturbance. Unplug the equipment and make sure your vital equipment gets plugged into the outlets labeled Battery Backup. Any thing that does not require backup power should be plugged into the surge protection only outlets.

What does a back-ups alarm mean?

1.) The Back-UPS product is operating on battery power- This alarm indicates that the UPS has transferred from On Line operation to On Battery operation. The Battery Power Supplied outlets are now battery-powered. 2.)

What happens when I pull the ups power plug?

Here's what happens when I pull the UPS power plug (to simulate a power outage): 1. After 1 minute, PowerChute executes a hibernation command. 2. The workstation shuts down. 3. The available battery time rises to about 50 minutes. 4. About 45 seconds after the shutdown, the workstation powers on and begins to boot. 5.

How do I Turn Off the back-ups battery?

To do this, make sure the Back-UPS product is plugged into the wall, push the On/Off button and hold it for approximately 4 seconds until a long tone is heard. The "On Battery" (yellow) LED will illuminate

BATTERY BACKUP SHUT OFF AFTER POWER SURGE



while the "On-Line" (green) LED will flash.



Remove the smoke alarm from the base by twisting it counterclockwise, if the alarm continues to sound unnecessarily. Remove the battery that's no longer providing enough backup power to the smoke alarm from the battery compartment. Place a fresh battery into the battery compartment. Twist the smoke alarm back onto the base. Step 3



This is due to the system misinterpreting the power surge as a security breach, activating the alarm and triggering a response. Check the backup battery in the alarm system and replace it if it's dead. If the problem persists, contact the alarm company for further assistance. Your old burglar alarm may keep going off after a power



Smoke alarms receive power from 2 locations: the building power supply, and the backup battery built in to the alarm. When there is a power outage, the alarms begin using the backup battery instead of the building power supply.

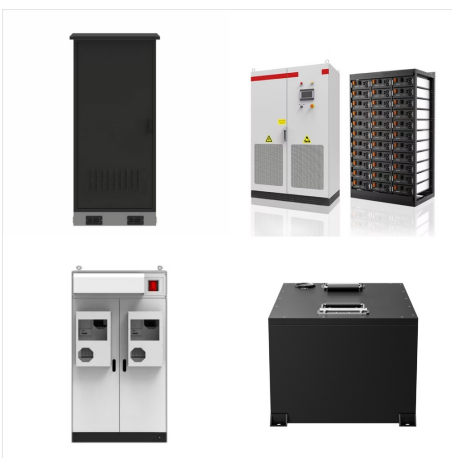
BATTERY BACKUP SHUT OFF AFTER POWER SURGE



CyberPower's CP900AVR has an easy-to-use interface with just two buttons (power on/off and mute) and four indicator lights (showing when the unit is turned on, when the battery backup kicks in



Should I Turn Off UPS During Power Outage? Yes, you should turn off and disconnect your UPS from the wall socket during a power outage. That's because the power outage could cause current and voltage surges when power is restored. Plus, the power supply could be unstable for a while after the end of a power cut.



PowerChute is set to shutdown my workstation after 1 minute on battery. Here's what happens when I pull the UPS power plug (to simulate a power outage): 1. After 1 minute, PowerChute executes a hibernation command. 2. The workstation shuts down. 3. The ???

BATTERY BACKUP SHUT OFF AFTER POWER SURGE



That's a nice ups, line interactive. Means it has an inverter, the battery is always "on", but when there's mains power the inverter charges the battery, when mains is off it switches to battery power. Because the inverter is always active, switching is quite faster than if everything had to switch, like the cheapo "offline" type.



A mini-tower UPS with line interactive topology, the CyberPower LX1500GU3 provides battery backup (using simulated sine wave output) and surge protection for desktop computers, workstations, networking equipment, smart home devices, and home entertainment systems. The LX1500GU3 uses Automatic Voltage Regulation (AVR) to correct minor power fluctuations ???



Buy APC UPS Battery Backup and Surge Protector, 850VA Backup Battery Power Supply, BE850G2 Back-UPS with (2) USB Charger Ports:
Uninterruptible Power Supply (UPS) - Amazon
FREE DELIVERY possible on eligible purchases

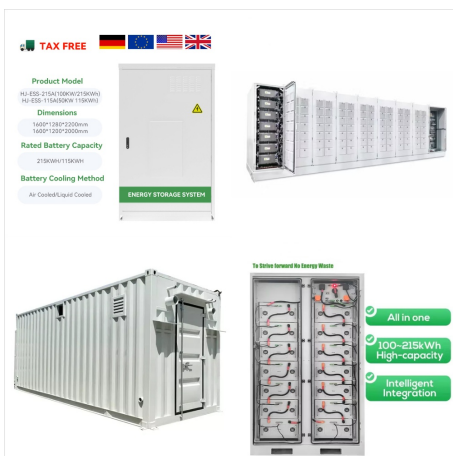
BATTERY BACKUP SHUT OFF AFTER POWER SURGE



When the voltage is not enough, the UPS fails to take over the devices after power failure. Green power: Green power is a safety mechanism for UPS. It allows the UPS to turn itself off after 2 minutes or less after the power cut. It's done to avoid excessive load on the UPS. However, green power is introduced to just save the working progress.



The CyberPower SL750U-FC uninterruptible power supply (UPS) system provides surge protection for lightning-induced surges and other power events that can damage electronic equipment. This unit delivers enough battery backup to connected devices during a utility power failure, so you can perform a graceful shutdown to protect against the loss of data and damage ???



A surge protector will do most of what you want in that case. Personally, I'd rather not leave it up to chance. My UPS will do surge protection, power conditioning, and battery backup all in the same unit. It can also shut down my PC???meaning I can have auto-on or auto-off on a schedule.

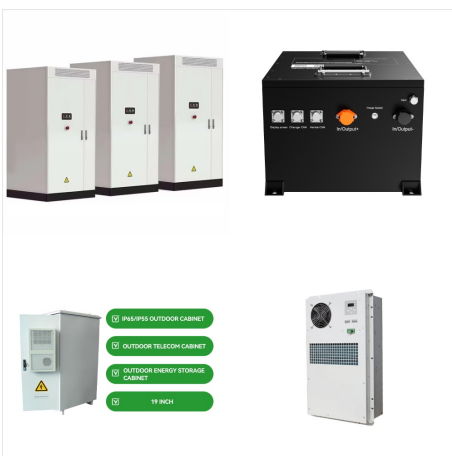
BATTERY BACKUP SHUT OFF AFTER POWER SURGE



Please refer to your Back-UPS user manual for the complete list of audible tones. Product Line: All Back-UPS Families Cause: 1.) The Back-UPS product is operating on battery power - This alarm indicates that the UPS has transferred from On Line operation to On Battery operation. The Battery Power Supplied outlets are now battery-powered.



But the problem is that when the power went off, the PC also went off for a fraction of a second and started rebooting. The strangest thing though is that it has to be a proper power failure by the service supplier. If I just turn off the power at the wall plug, the UPS kicks in immediately and the PC carries on working fine.



CyberPower's CP900AVR has an easy-to-use interface with just two buttons (power on/off and mute) and four indicator lights (showing when the unit is turned on, when the battery backup kicks in

BATTERY BACKUP SHUT OFF AFTER POWER SURGE



According to Schneider Electric, an APC battery system may emit an infrequent single tone to let you know when a system functions normally. Provided the tone only emits a single beep and doesn't display any insistent behavior, such as long tones, double beeps, or a beep that recurs on a regular basis, you shouldn't need to take any action on the device.

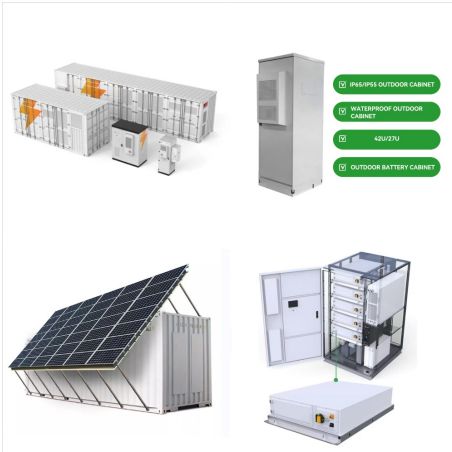


Vertiv Liebert PST5 UPS - 850VA/500W 120V Standby Power, 8 Outlets, Battery Backup with Surge Protection, LCD Screen, Energy Star Certified, 3 Year Warranty, Free Shutdown Software (PST5-850MT120) Green features to include outlets that turn off idle peripherals resulting in reduced energy use and saving money on electricity. Product



Unplug and turn off the UPS before performing battery replacement. Use tools with insulated handles. Battery replacement All outlets provide battery backup and surge protection for computers, monitors and other you should save files and shut down your equipment since battery power will eventually be depleted. When the red

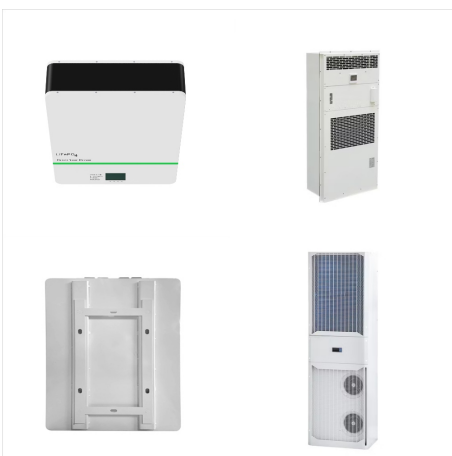
BATTERY BACKUP SHUT OFF AFTER POWER SURGE



One long beep. The issue: The wattage of the connected devices has exceeded the capacity of the UPS system. You are experiencing a power overload. The solution: First, turn the UPS system off. Next, unplug at least one device from the battery outlets. Then reset the circuit breaker and turn the UPS system back on.



not need battery backup power to the Surge Protection Only outlets. These outlets The Back-UPS is operating on battery power and the battery power is getting low. Shut down all connected equipment to avoid losing an unsaved data. When possible, connect the Back-UPS to AC power to recharge the battery power. Power Off 2On The Back-UPS is



My Cyberpower UPS did the spontaneous shut-down on brownout to me a while ago and when I investigated it, I found out that its 24V battery couldn't charge past 17V (very much dead) with the UPS still pushing 2A into it (the battery was very warm) yet the UPS still reported 24V with 60% charge, no battery warning.

BATTERY BACKUP SHUT OFF AFTER POWER SURGE



Hi, I'm new in the forum and I'm in need of some help trying to figure out an weird issue I had with one of my UPS's. Yesterday I had a very briefly power outage in my home, one of those that you only detected because the lights briefly flick. During this, one of my UPS's completely shutdown (Salicru SPS One 1100 VA), turning off all the equipment I have ???



In Power Chute I have it configured for maximum time on battery, i.e. it should shut down the computer when there are only 5 minutes of battery left. It's like this option is not working, it is like the Power chute is configured to shut down not when the battery still has 5 minutes, but after 9 minutes on battery.



Turn off the UPS because it's at about 25% battery and it's going to shut off soon. Note: turning off the UPS means that the power is out and none of the outlets will work if you turn the UPS off. Mute beeping: The devices user manual will contain the explicit instructions on which steps to take to mute beeping on your UPS.

BATTERY BACKUP SHUT OFF AFTER POWER SURGE



After several years in service, running the self-test on select UPS models causes the unit to shut down. Solution: Certain units are dependent on the battery in order to power on. When running a self-test, the UPS briefly switches to battery. If battery voltage drops below what is required to maintain power, the UPS has a chance of shutting down.



Interconnected smoke alarm failure may occur after a power surge or power outage. If the alarms are chirping after power is restored, check the batteries. Turn off the power at the breaker box and then take the smoke alarm off its mounting bracket and disconnect it from the wiring harness. Remove the backup battery if it is removable and



Test the surge protector: Try turning the surge protector back on. If it works and your devices run fine, the reset was successful. 4 Common Causes Why Surge Protector Keeps Turning Off. If your surge protector keeps shutting off, finding out why is important. As mentioned earlier, short circuits and overloading are the two main causes.

BATTERY BACKUP SHUT OFF AFTER POWER SURGE



When a power outage occurs my PC will immediately turn off and restart itself using the battery power, leaving me no chance to save progress or turn it off properly. I'm using a Cyberpower UT750G, I made sure to connect it to the surge protected outlet. The UPS is ???



Frequency of Power Events Power quality issues, such as voltage fluctuations, harmonic distortions, noise and power outages can cause the UPS to shut down and activate the backup battery. After a UPS operates on battery power during a power failure, the battery recharges for future use, an event known as the discharge cycle.