

What is a battery energy storage system?

The battery energy storage system's (BESS) essential function is to capture the energy from different sources and store it in rechargeable batteries for later use. Often combined with renewable energy sources to accumulate the renewable energy during an off-peak time and then use the energy when needed at peak time.

Is Volvo battery energy storage system a sub-system?

A spokesperson for Volvo Group told Energy-Storage.news that the product is a sub-system rather than a full containerised solution. The power solutions arm of automotive group Volvo has expanded into the battery energy storage system (BESS) market.

What is battery energy storage (Bess)?

These developments are propelling the market for battery energy storage systems (BESS). Battery storage is an essential enabler of renewable-energy generation, helping alternatives make a steady contribution to the world's energy needs despite the inherently intermittent character of the underlying sources.

What are the critical components of a battery energy storage system?

In more detail, let's look at the critical components of a battery energy storage system (BESS). The battery is a crucial component within the BESS; it stores the energy ready to be dispatched when needed. The battery comprises a fixed number of lithium cells wired in series and parallel within a frame to create a module.

How is battery energy storage system connected at primary substation?

BESS at primary substation Battery energy storage system may be connected to the high voltage busbar(s) or the high voltage feeders with voltage ranges of 132kV-44 kV; for the reliability of supply, substations upgrades deferral and/or large-scale back-up power supply.

What are the different types of energy storage systems?

These technologies include electrochemical, water electrolysis, compressed air, flywheels and superconducting magnetic energy storage. Battery energy storage systems (BESS) are a sub-set of energy storage systems that utilize electrochemical solutions, to transform the stored chemical energy into the

# BATTERY ENERGY STORAGE SUB SYSTEM



needed electric energy.



Battery energy storage systems (BESSs) have become increasingly crucial in the modern power system due to temporal imbalances between electricity supply and demand. The power system consists of a growing number of distributed and intermittent power resources, such as photovoltaic (PV) and wind energy, as well as bidirectional power components



The keywords that were selected to search for the publication include energy storage, battery. the economic viability of hydrogen storage systems will be increased if the capital costs associated with the hydrogen sub-system is reduced. Development in energy storage system for electric transportation: A comprehensive review. 2021, Journal



Lithium batteries are becoming increasingly important in the electrical energy storage industry as a result of their high specific energy and energy density. The literature provides a comprehensive summary of the major advancements and key constraints of Li-ion batteries, together with the existing knowledge regarding their chemical composition.

# BATTERY ENERGY STORAGE SUB SYSTEM



4 For example, ERCOT presented the results of ERCOT Assessment of GFM Energy Storage Resources at the Inverter-Based Resource Working Group meeting on August 11, 2023. As the next step, ERCOT will work on the requirements for GFM Energy Storage Resources including but not limited to performance, models, studies, and verification. See



Li J et al. [22] developed a hybrid power management strategy for superconducting magnetic energy storage and batteries. Wang G et al. [23] presented a method for optimizing the capacity of a HESS to support the dispatch of a 30 MW PV power plant. A frequency-based approach has been proposed in Refs.



Battery energy storage systems (BESS) can enhance grid reliability, capacity and resilience through energy storage and delivery. Volvo Penta's energy-dense BESS subsystems are purpose-built to enable OEMs to build transportable, high-performance BESS solutions supporting the energy transition in industries where energy density is essential.

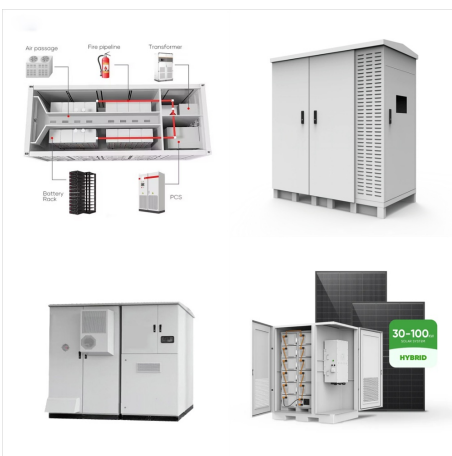
# BATTERY ENERGY STORAGE SUB SYSTEM



BESS is a battery energy storage system with inverters, battery, cooling, output transformer, safety features and controls. Helping to minimize energy costs, it delivers standard conformity, scalable configuration, and peace of mind in a fully self-contained solution.



The project using solar panels and battery storage represents a monumental leap forward in the generation and use of renewable energy. The project utilizes battery storage for storing solar energy when the sun is shining and using it later during hours of peak demand in the evening, for meeting the electricity demand in the state.



A battery energy storage system is a sub-set of energy storage systems, using an electro-chemical solution. In other words, a battery energy storage system is an easy way to capture energy and store it for use later, for instance, to supply power to an off-grid application, or to complement a peak in demand.



# BATTERY ENERGY STORAGE SUB SYSTEM



The future of renewable energy relies on large-scale energy storage. Megapack is a powerful battery that provides energy storage and support, helping to stabilize the grid and prevent outages. By strengthening our sustainable energy infrastructure, we can create a cleaner grid that protects our communities and the environment.



Battery Energy Storage Systems (BESS) play a fundamental role in energy management, providing solutions for renewable energy integration, grid stability, and peak demand management. In order to effectively run and get the most out of BESS, we must understand its key components and how they impact the system's efficiency and reliability.

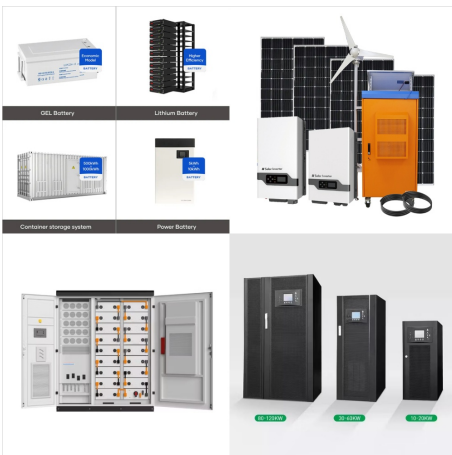


Market Size & Trends. The U.S. battery energy storage system market size was estimated at USD 711.9 million in 2023 and is expected to grow at a compound annual growth rate (CAGR) of 30.5% from 2024 to 2030. Growing use of battery storage systems in industries to support equipment with critical power supply in case of an emergency including grid failure and trips is expected a?

# BATTERY ENERGY STORAGE SUBSYSTEM



This encompasses hydro, air storage, flywheels, and more. Despite the diverse range of ESS subsets, energy storage stands out due to its numerous advantages. Advantages of a Battery Energy Storage System. Battery Energy Storage Systems are by far the most widely used subset of energy storage, and for good reason.

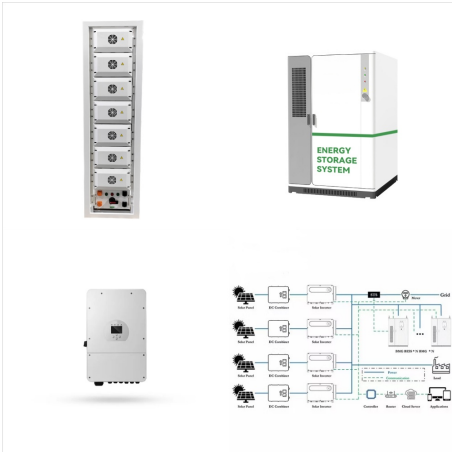


**Battery Monitoring Subsystem:** This subsystem is responsible for the real-time monitoring of individual battery cells or cell groups. It measures critical parameters like voltage, current, temperature, and state-of-charge (SOC) to provide crucial data for battery management and protection. **Energy Storage Optimization:** With the integration of



**How do battery energy storage systems work?** Simply put, utility-scale battery storage systems work by storing energy in rechargeable batteries and releasing it into the grid at a later time to deliver electricity or other grid services. Without energy storage, electricity must be produced and consumed at exactly the same time.

# BATTERY ENERGY STORAGE SUB SYSTEM



Today, energy production, energy storage, and global warming are all common topics of discussion in society and hot research topics concerning the environment and economy [1]. However, the battery energy storage system (BESS), with the right conditions, will allow for a significant shift of power and transport to free or less greenhouse gas (GHG) emissions by a?



Georgia Power will soon flip a switch and turn on its latest clean energy construction project: battery storage. When millions of Georgians begin their day by turning on lights, the coffee machine, take a shower, dry their hair, and run the dishwasher, the energy demand in the state spikes.



Grid-Scale Battery Storage: Costs, Value, and Regulatory Framework in India Webinar jointly hosted by Lawrence Berkeley National Laboratory and Prayas Energy Group July 8, 2020 1. 2 By 2021, incremental PPA adder of \$5/MWh for 12-13% of storage (NV Energy) By 2023, incremental PPA adder of ~\$20/MWh for 52% storage (LADWP)

# BATTERY ENERGY STORAGE SUB SYSTEM



The battery energy storage system's (BESS) essential function is to capture the energy from different sources and store it in rechargeable batteries for later use. Often combined with renewable energy sources to accumulate the renewable energy during an off-peak time and then use the energy when needed at peak time. This helps to reduce costs and establish benefits a?|



This subsegment will mostly use energy storage systems to help with peak shaving, integration with on-site renewables, self-consumption optimization, backup applications, and the provision of grid services. We a?|



What is grid-scale battery storage? Battery storage is a technology that enables power system operators and utilities to store energy for later use. A battery energy storage system (BESS) is an electrochemical device that charges (or collects energy) from the grid or a power plant and then discharges that energy at a later time



# BATTERY ENERGY STORAGE SUB SYSTEM



Large-scale projects use the most compact BESS containers with very high energy storage capacity. 3.727MWh in 20ft container with liquid cooling system was popular until last year which had 10P416S configuration of 280Ah, 3.2V LFP prismatic cells. Understanding battery energy storage system (BESS)| Part 5. Subscribe & Stay Informed



Battery energy storage systems, or BESS, are a type of energy storage solution that can provide backup power for microgrids and assist in load leveling and grid support. There are many types of BESS available depending on your needs and preferences, including lithium-ion batteries, lead-acid batteries, flow batteries, and flywheels.



A Battery Energy Storage System (BESS) is capable of providing a contingency FCAS response using one of two methods: (a) Via a variable controller, where it varies its active power when the local frequency exceeds either the lower or upper limit a?|