

How has solar energy changed hospitals in Libya?

All that has now changed in fifteen important hospitals thanks to solar based energy installations carried out by the country's largest solar power installer. The project was funded by the UNDP, the contractor is Gsol Energy and their partner in Libya Insiab. Ubari General Hospital has a typical installation and benefits from:

Will 3000 streetlamps be installed in Libya?

A project to install a further 3000 streetlamps in Libya is underway. Students from the Institute of Electrical and Electronics Engineers (IEEE) facility in Tripoli University enjoyed a site visit hosted by Insiab to one of the 15 systems in Tripoli.

Who are insiab Libya solar?

Insiab Libya Solar pride themselves on the professional standard of their installations using world class electronics, installed by highly trained engineers. In other projects they secure the power for telecoms networks, and for Internet Service Providers - ensuring that Libya's utilities benefit from full up-time.

How do I energise my EPs?

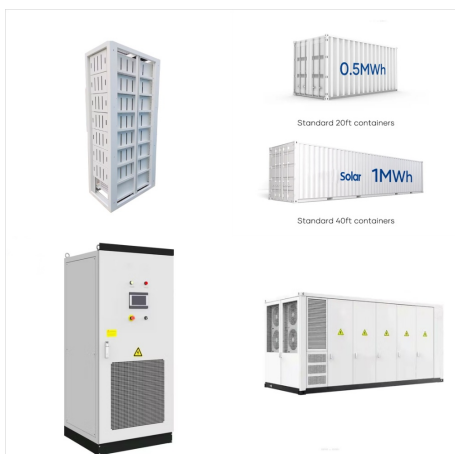
You will need a "changeover switch" that,when pulled,will isolate your home from the grid and in turn,energise the EPS. This is a manual action and in a power cut,you must pull this switch before any power is supplied from the batteries. You'll also need to be careful about what you turn on when in EPS mode.

What does insiab do for Libya?

In other projects they secure the power for telecoms networks, and for Internet Service Providers - ensuring that Libya's utilities benefit from full up-time. Insiab are passionate about encouraging the Libyan government - a country rich in oil - to take advantages of solar.



AlMasar is a name synonymous with tires in Libya since the 1970s. Since our modest starts to supplying only three or four sizes to the Libyan customer, To our current day where we supply ???



Various configurations of PV/battery/diesel generator hybrid systems with grid connection option were thoroughly explored under multiple scenarios of electricity tariff, fuel ???



2) What battery settings should I use when considering the EPS? The FoxESS inverters have two settings involving the "Minimum Charge Level" of the batteries; ??? "Min SoC" and ??? "Min SoC (On Grid)". Min SoC ??? The minimum battery level the inverter will allow the batteries to fall to in any situation.



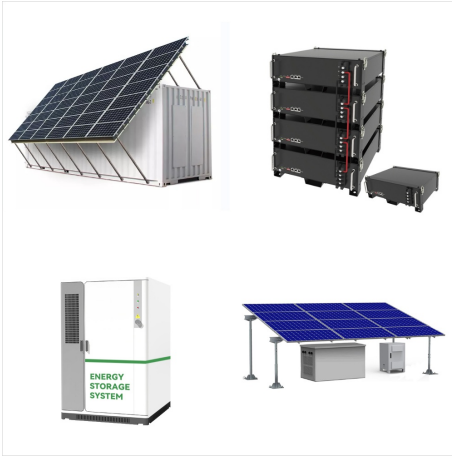
Optimize your electric vehicle battery manufacturing process with the correct combination of the most sustainable equipment. Combine air and gas compressors with the right dryers, filters, and gas generators.



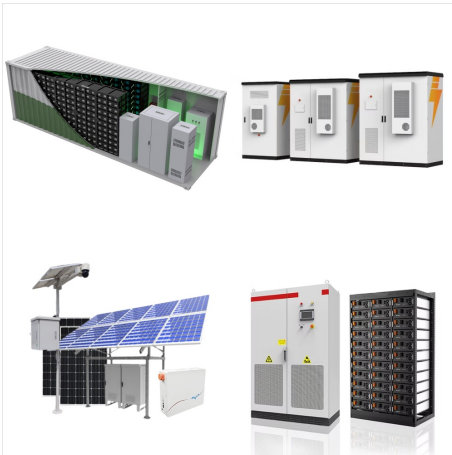
Optimize your electric vehicle battery manufacturing process with the correct combination of the most sustainable equipment. Combine air and gas compressors with the right dryers, filters, ???



The electricity grid in Libya suffers from frequent blackouts and brown-outs with the network voltage often falling from 220V to 170V. Power distortion has been measured at up to 54%, with the result that it is simply not possible to ???



Various configurations of PV/battery/diesel generator hybrid systems with grid connection option were thoroughly explored under multiple scenarios of electricity tariff, fuel price, battery amperage capacity, inflation, interest rate, and government incentives.



We examine the challenges and illustrate solutions how to solve them. One of these challenges is cell-to-cell mounting, an early step in the battery production process. Discover more in our white paper on "The future for electric vehicle battery assembly solutions."