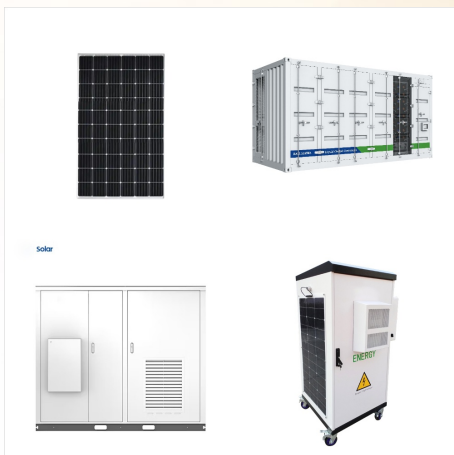




Malawi's solar-powered milking project could transform the livelihoods of small-scale dairy farmers living off-grid. When Robert Mbendera started out as a small-scale dairy farmer in rural Malawi 20 years ago, milking the one cow he owned ???



The Salima project is the first solar IPP and largest IPP in Malawi and is a result of JCM's pioneering activities in the country since 2013. JCM signed a power purchase agreement (PPA) with the Electricity Supply Corporation of Malawi Limited (ESCOM) and obtained all the permits and Land Agreements, in addition with an Implementation Agreement (IA) signed both Ministry ???



We at Livi Machinery are thrilled to announce a recent successful project: supplying a complete poultry farming equipment for a remarkable 40000 chickens layer battery cages to a poultry farmer in Malawi. This undertaking highlights our commitment to providing high-quality, efficient, and affordable poultry farming solutions across the globe.



Legislation against battery farms Battery chickens might be banned in Europe, but there is no ban on caged farming overall. The EU permits enriched cage systems, where the cage must contain a nest, a perch, claw shorteners, litter for pecking and scratching, and 750 cm square of floor space per hen. 5 These cages allow chickens to carry out some natural ???



Renewable energy infrastructure firm Field has announced the acquisition of Scottish Holmston and Drum Farm battery energy storage sites from RES. The Holmston and Drum Farm sites, located in Ayr (South Ayrshire) and Keith (Moray) respectively, have a combined capacity of 100MW/200MWh, with this transaction marking a 200MWh addition to ???



The key strategic partnership between the clean energy companies to develop the Nkhoma Deka solar farm will support Malawi to increase its electricity generation capacity to 1,000 MWp by 2025. SolarQuarter Empowering. Insightful. The future solar energy facility is planned to have a capacity of 50 MWp and also will include a battery storage



The many utility-scale battery farms in the interconnection queue in the Pacific Northwest range from 75 to 250-megawatts in capacity. To put that in layperson's terms, Nelson said Tenaska's proposed 200-megawatt battery farm in Skagit County could power about 100,000 homes for eight hours. Location, location, location



The U.S. Trade and Development Agency announced that it has awarded a grant to Malawi-based Mzuzu WF Limited (Mzuzu WF) for a feasibility study to establish a 50-megawatt wind energy generation facility and an accompanying battery energy storage system ("BESS") in Malawi. The project will contribute reliable clean energy to stabilize the national ???



What is battery farming? To classify as a factory (or "intensive") farm, a facility must have capacity for more than 40,000 birds. Many are much bigger than this. Worryingly, there is a growing number of "mega farms" in the ???



24 hours hotline to rescue any battery challenge within Malawi market regardless of the brand a call is using. Free distilled water and free battery check-up any time at any of our Outlets; Our valued Corporate clients; OUTLETS OPENING HOURS Monday through Friday 0730hours - ???



Developed by JCM Power and PIDG company InfraCo Africa, Golomoti incorporates highly efficient bifacial solar panels and a utility-scale 5MW/10MWh battery energy storage system (BESS), the first of its kind in sub ???



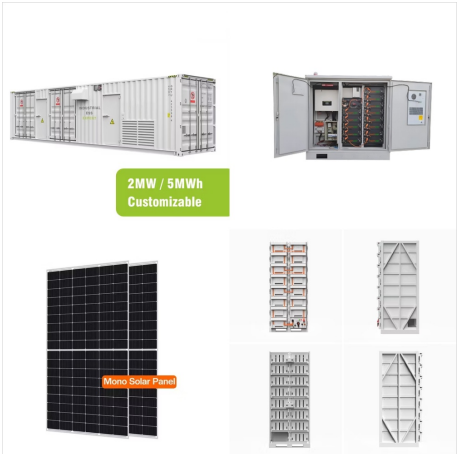
JCM Power, together with Private Infrastructure Development Group (PIDG) company, InfraCo Africa, is pleased to announce that the 20MW Golomoti Solar PV and Battery Energy Storage project in the Dedza district of Malawi has successfully entered Commercial Operations. The project includes a 28.5MWp solar array coupled with a 5MW/10MWh lithium-ion battery, and ???



This was an action for damages for assault and battery that led to the removal of one of the plaintiff's eye; following a beating by the defendant's guards when the plaintiff was caught stealing on the defendant's property. The Malawi Legal Information Institute (MalawiLII) was launched in 2009 as an online resource that provides free



-18. Livi Machinery is thrilled to announce the successful delivery of H-type layer battery cages to a poultry farm in Malawi. This important shipment will empower the farm owner to raise up to 40,000 laying hens, significantly boosting their egg production capacity.



A \$70 million battery farm in Fife, which will use Tesla batteries, is under construction at a farm near Leslie. The Pitkevy site will take capacity from the National Grid and be able to



Ritz Farms and Property Investments Limited sets itself out to be a leading agribusiness in Malawi. The core businesses the company is involved in include Trading, Livestock, Transportation and Real Estate. We are also suppliers of various farm inputs in Malawi, including fertilizer, crop seeds, chemicals, and pesticides. Our Client List



The state of the art power plant is the first utility-scale grid-connected hybrid solar and battery energy storage project in Malawi and the largest in Sub-Saharan Africa. It comprises 52,000 bi-facial solar panels and ???



Zutari was the Engineer for the Golomoti Solar Project in Malawi and undertook detailed design for this 28.5 MWp solar PV and Battery Energy Storage (BESS) project. The solar plant is coupled with a 5 MW/10MWh ???



Robert Mbendera, dairy farmer, Malawi. But this changed in 2020 when researchers at the Lilongwe University of Agriculture and Natural Resources (LUANAR) trialled a solar-powered milking device and water pumping system at Mbendera's farm in the Dedza district of central Malawi. The milking device dramatically reduced milking time.



The 75MWdc/60MWac Salima solar PV plant started commercial operations on 15 November, becoming the first solar independent power project in Malawi to connect to the grid and the first large international IPP developed under a new regulatory set-up.. Several more projects are set to follow, but Malawi is now approaching solar saturation and ready to move on ???



Fortune CP provides innovative renewable energy products and services in Malawi. These include solar components (solar panels, inverters, batteries), off-grid and grid-tie solar systems for commercial, industrial and residential applications, battery energy storage systems, energy efficient LED lighting systems, solar water heating products, solar water pumping systems, mini ???



Future Outlook and Potential. Looking ahead, the future of lithium battery farms is promising:
Technological Advancements: Ongoing research and development efforts are expected to further enhance the performance and longevity of lithium batteries, making them more efficient and cost-effective.; Market Expansion: Growing demand for energy storage solutions, ???



Shalom Farms consists of a total of 50 acres combined land in three locations: Kasungu, Lilongwe and Mchinji. We are an organic produce and herbal products commercial farm based on Permaculture systems of farming, which applies a more holistic approach to farming crops and livestock to achieve high yields and productivity while doing it in a more sustainable and ???