

Why is my Beats Solo 3 power button not working?

Non-functional power buttons are quite common but fortunately, there are some simple fixes that can help you get your Beats Solo 3 headphones up and running again. Some of the steps you can undertake to fix the button include: The most common cause of power button failure is a dead battery.

How do I Reset my Beats Solo 3?

Sometimes a software bug or glitch can stop your headphones or earbuds from working. In such a case, a hard reset or factory reset can get your headphones working again. To hard reset your Beats Solo 3, press and hold the POWER + VOLUME DOWN button simultaneously for 10 seconds until you see the charging light start flashing.

How to clean a Beats Solo 3 button?

If your Beats Solo 3 has been in use for a long time, it is a good idea to clean the button. Over time, dirt particles can seep inside the button and accumulate under the surface where the button makes contact with the circuit. You don't need to open your beats to clean the button. There is a simple trick with WD40 contact cleaner.

Should I replace my Beats Solo 3 battery?

If you are not a DIY person, you can take it to a professional repair shop or contact Apple support. If your Beats Solo 3 has been in use for a long time and you noticed a gradual decrease in its run time, the battery has a good chance of dying. It's time to replace its battery with a new one.

What is the power button on Beats solo 3 headphones?

The power button in Beats Solo 3 headphones allows users to easily switch between wired and wireless listening modes, as well as turning the headphones on or off. It also has an LED indicator light which shows when the headphones are in use or charging.

How do I know if my Beats Solo 3 headphones are charging?

It also has an LED indicator light which shows when the headphones are in use or charging. This makes it easy for users to know when their Beats Solo 3 headphones are ready for use, and when they need to be

BEATS SOLO 3 POWER BUTTON BROKEN



recharged.



So, connect the power and let your device charge for 3-4 hours. Afterward, press the power button and see if the lights come ON. Tip#4. Fix the Power Button. A bad or malfunctioning power button is another reason your Solo 3 is not turning ON. The device and its hardware are not defective, rather the button has lost connection.



Introduction: Converting Broken Beats Solo3 Headphones to Hearing Protection Wireless Headphones. By Butterbob1 Follow. More by the author: Remove the back panel and unscrew the power button assembly. Next, gently pull up the wires that are glued down to the plastic enclosure. These wires are fragile and prone to snapping, so if you are

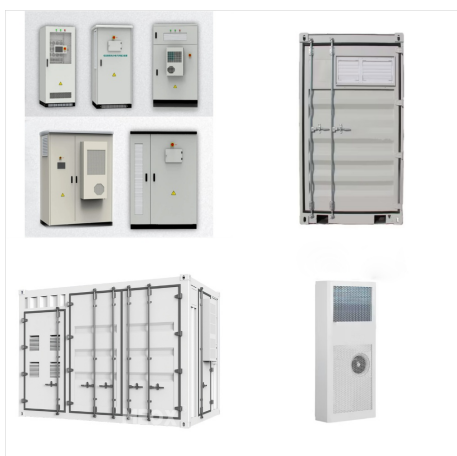


Why do my beats 3 Solo headphones work with aux in but not on Bluetooth Why do my beats solo 3 sound with aux in and not Bluetooth 1466 1; 3 replies. Loading page content. It is the same result, the side with the power has no sound. It started about two weeks ago. But when it's plugged in with the cable, the sound does work. I also tried to

BEATS SOLO 3 POWER BUTTON BROKEN



Welcome to /r/lightsabers, the one and only official subreddit dedicated to everything lightsabers. Feel free to post anything regarding lightsabers, be it a sink tube or a camera flashgun.



The Apple Limited Warranty covers your Beats and the accessories that come in the box with your product against manufacturing issues for one year from the date you bought them. Apple-branded accessories purchased separately are covered by the Apple Limited Warranty for Accessories. This includes adapters, spare cables, wireless chargers, or



Try charging your headphones for at least 30 minutes, then press and hold the power button for 10 seconds. This should reset the device and get it working again in many cases. Beats Solo 3 Power Problems: Troubleshooting Tips. If your Beats Solo 3 headphones are charging but refuse to power on, don't despair. Several common culprits could

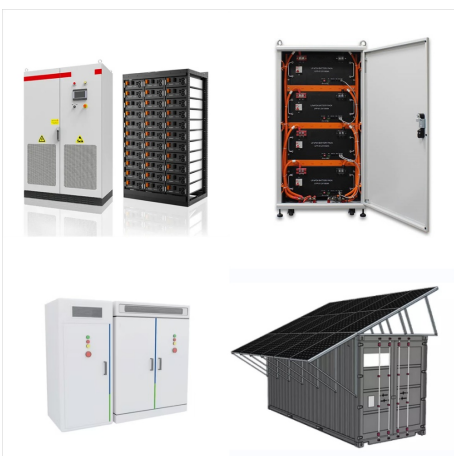
BEATS SOLO 3 POWER BUTTON BROKEN



To connect your Beats Solo Pro wireless headphones to your laptop, follow these steps: 1. Make sure your laptop has Bluetooth capability. Check the specifications of your laptop to confirm. 2. Turn on your Beats Solo Pro headphones by pressing and holding the power button until the LED indicator light flashes. 3.



Hey, I found this thread almost a year later and was also having issues resetting my Beats Solo Pro. I held down the power button (on the left ear piece) and after turning them back on, it was able to be re-paired with my phone (Huawei Mate 40 pro).

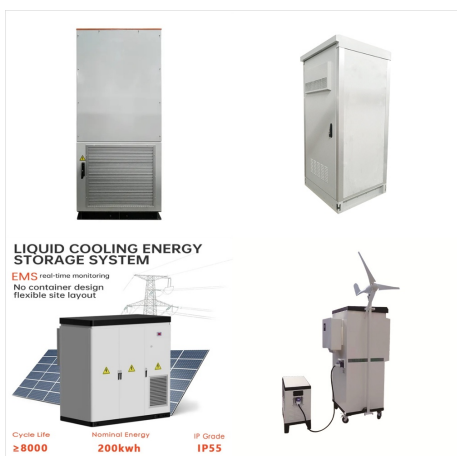


To reset the Beats Solo?, follow the steps below: Locate the Volume Down and Power buttons on your Beats. Press and hold down both buttons on Solo 3 for 10 seconds. When the Fuel Gauge flashes, you can release both buttons. Your headphones would then restore to their factory settings.

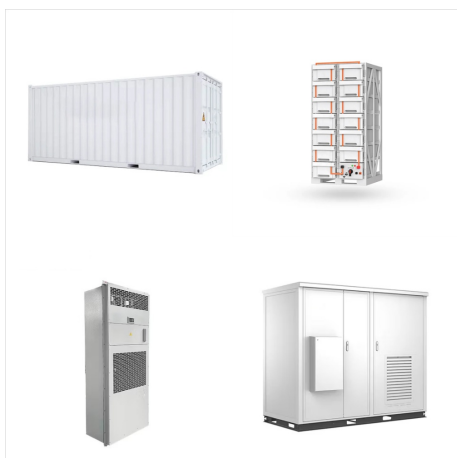
BEATS SOLO 3 POWER BUTTON BROKEN



Beats Solo 2/3 Earpad Cushion. Beats by Dre. Studio Power Button. Power button for the Beats Studio Headphones. Sale price \$4.99. View. Beats by Dre. Studio Hinge Covers. Replace a broken or damaged head band frame on your Beats by Dre. Studio headphones. Sale price \$14.99. View.



The device will not turn on and the power button will not flash to show headphones are discoverable. Beats Solo3 is not charging. Beats Solo 3 come with a micro USB charging cable. According to Apple, the headphones should take around 2 hours to fully charge. Faulty charger.



Another reason why Beats Solo 3 headphones may disconnect is due to outdated or missing drivers. Drivers are software components that allow your computer or mobile device to communicate with your headphones. If your drivers are outdated or missing, your device may not be able to establish a stable Bluetooth connection with your headphones.

BEATS SOLO 3 POWER BUTTON BROKEN



Finally with connect usb on pc, press 10 seconds power button, you see your beats disconnected to pc. (If not, you have a power button problem) If this stapes are working good, check your music with and auxiliar cable, and see are listening left and right speaker. In my Beats on Left case, one wire is not doing your funciont, like this:



QUICK ANSWER. Put your Beats Solo 3 in pairing mode by pressing and holding the power button for five seconds. To connect them with a Mac, go to System Settings > Bluetooth > Devices > select Beats Solo 3 and click Connect. To pair these headphones with Windows, head to Bluetooth and other device settings > Add device > Bluetooth > Select Beats Solo 3.



View the Beats Solo 3 manual for free or ask your question to other Beats Solo 3 owners. Manua. Is. Manua. Is. Beats headphones ? Beats Solo 3 manual. 6.7 ? 1. give review. PDF manual ? 40 pages. follow these steps: 1. Turn on the Beats Solo 3 headphone by pressing and holding the power button until the LED indicator lights up. 2

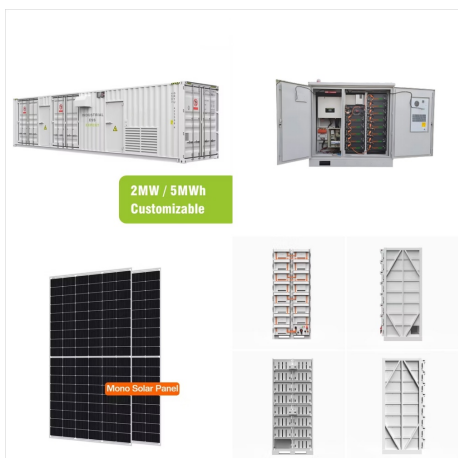
BEATS SOLO 3 POWER BUTTON BROKEN



Solo Wireless. Reset Beats Solo 4. Hold down the volume down button and the power button for 10 seconds. When the light on the right ear cup blinks red and white, release the buttons. Your headphones are now reset and ready to be set up with your devices again. Reset Solo Pro. Hold down the mode button and volume down button for 10 seconds.



We understand that the mode button on your Beats Solo Pros headphones is not working. We would recommend taking a look at this support link for the Solo Pro headphones. First try resetting the headphones from the link there and if the mode button is still not working, then the link for "Service and warranty". Solo Pro Support. Best regards.



Here's a review of the Beats Solo 3 Wireless Headphones: Pros: * Excellent battery life: Up to 40 hours of listening on a single charge, with Fast Fuel technology that provides 3 hours of playback with a 5-minute charge. * Great sound quality: Award-winning Beats sound with fine-tuned acoustics for clarity, breadth, and balance.

BEATS SOLO 3 POWER BUTTON BROKEN



Here's a review of the Beats Solo 3 Wireless Headphones: Pros: * Excellent battery life: Up to 40 hours of listening on a single charge, with Fast Fuel technology that provides 3 hours of playback with a 5-minute charge. * Great sound quality: Award-winning Beats sound with fine-tuned acoustics for clarity, breadth, and balance.



Adjust your volume: If your music is too quiet or too loud, try adjusting the volume on your device or on your Beats Solo 3.; Check your audio settings: Make sure that your device's audio settings are correct and that the audio output is set to your Beats Solo 3.; Reset your Beats Solo 3: If the problem persists, try resetting your Beats Solo 3 to their default settings.



Broken Power Button. There are times when the power key has long worn down with use. It's a common occurrence, especially for headphones that sport traditional controls instead. For reference, the power button on the Beats Solo3 is located discretely above the Fuel Gauge indicator. You'd only have to press it for a few seconds to get

BEATS SOLO 3 POWER BUTTON BROKEN



The power button is located on the outside, below the right ear of the headphone. The power button connects to the battery which tells the headphones when to turn off or on. A broken or stuck power button may result in the headphones not turning on when they are supposed to. Prior to using this guide inspect power button of the Beats Solo 2