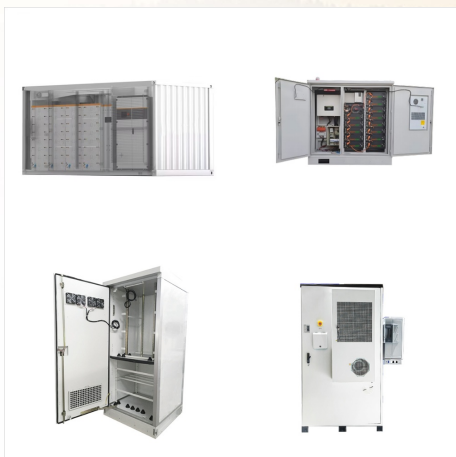
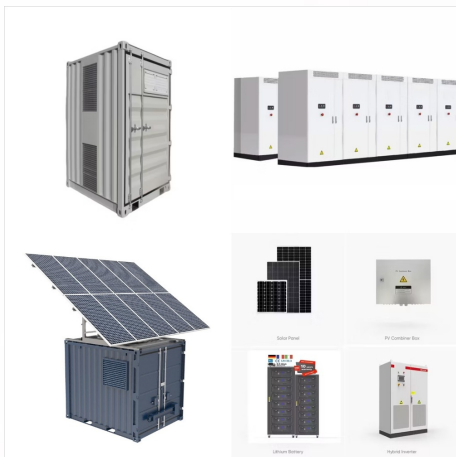




A world leader in track-based laboratory automation, Beckman Coulter is The COPAN WASP DT: Walk-Away Specimen Processor and WASPLab System the stylized logo, and the Beckman Coulter Power-Of-One-DxM-MicroScan-WalkAw-BR-ya 102550-EN-GLB



Power Processor Sample Handling System
Increasing productivity, reducing costs The Power Processor sample handling system can transform your laboratory's entire operation, enhancing productivity and accuracy, while significantly reducing labor costs.



Reducing TATs, costs and staff time requirements with Beckman Coulter automation, autoverification and REMISOL Advance. One health system's story. English Power Processor Sample Handling System; Two UniCel Dx C 800 clinical chemistry analyzers; Two UniCel Dx I 800 immunoassay analyzers; 3,000-tube stockyard;

BECKMAN COULTER POWER PROCESSOR SYSTEM



Der Copan WASP DT ist eine modulare, offene Plattform, die alle Facetten der Probenverarbeitung in der Mikrobiologie vollständig automatisiert, einschliesslich Ausplattieren und Ausstreichen, Vorbereitung von Gram-Objektr?gern, Inokulation in FI?ssigmedien und Aufbringen auf Scheiben zur Unterst?tzung einer schnellen, direkten Identifizierung.



Prior to the DxA 5000 TLA system installation, the clinical laboratory had a mixture of AutoMate/Power processor sample systems from Beckman Coulter and a separate coagulation system. Staff were responsible for pre-selecting samples for processing, with several manual interactions throughout the workflow that possibly

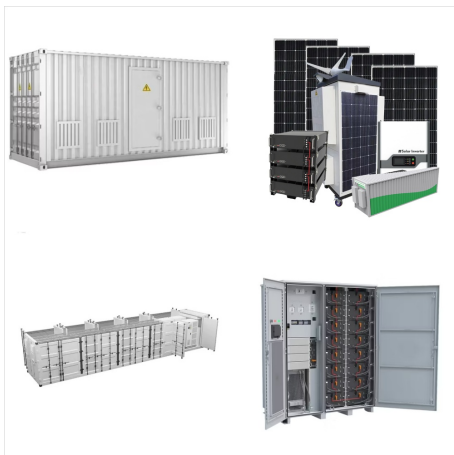


Laboratory: Power Processor core automation system with two centrifuges, recapper, automated 1020-tube room temperature stockyard, one AU5821 clinical chemistry system, one AU5811 clinical chemistry system and two UniCel(R) DXI800 immunoassay systems ??? Additional system: AutoMate 2550 sample processing system

BECKMAN COULTER POWER PROCESSOR SYSTEM



Beckman Coulter, Inc. (10 S Power Processor Sample Processing System with Generic Connection Modules 510(k) Summary [As Required by 21 CFR 807.92] MAY 2 7 2009 Submitter and Contact Information: Submitter Contact Person Beckman Coulter, Inc. Mary Beth Tang



U.S. Government Users Restricted Rights - As per GSA ADP Schedule Contract with Beckman Coulter, Inc., the use, duplication or disclosure is restricted as follows: Beckman Coulter hereby authorizes user to copy those documents ???



Select Tips & Tools to access helpful documents and information for your instrument. Step 1: To access content such as job aids, checklists, In-Lab Training Manuals, etc., select the Tips & Tools link in the top left navigation. Step 2: Select the product name. Step 3: You will be directed to the product page and access to the product-specific content.

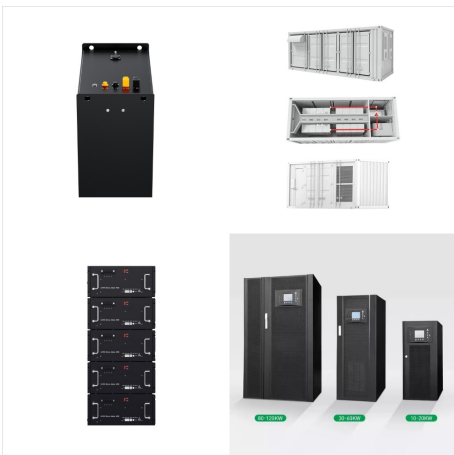
BECKMAN COULTER POWER PROCESSOR SYSTEM



The Power Processor sample handling system helps ensure consistent TAT and accurate results, and connects to a variety of analyzers and systems. Learn how. English Choose your country/region and language Your experience may change as only information for the country or region you select will be presented.



Power Processor LX and DxC Connection
Instructions For Use (IFU), Chapter 2 Direct
Observation Test Other _____ Manually centrifuge
samples Power Processor Centrifuge Module
Instructions For Use (IFU), Chapter 3 Direct
Observation Test Other _____ System
Shutdown/Power up Power Processor General
System Operations



U.S. Government Users Restricted Rights - As per
GSA ADP Schedule Contract with Beckman
Coulter, Inc., the use, duplication or disclosure is
restricted as follows: Beckman Coulter hereby
authorizes user to copy those documents published
on the World Wide Web by Beckman Coulter, for
noncommercial use, and only within the user's
organization.

BECKMAN COULTER POWER PROCESSOR SYSTEM



In turn, your lab can optimize the use of its staff and deliver better quality service to your customers. Plus, the open-architecture system can connect to a variety of analyzers, even non-Beckman Coulter systems, giving you the flexibility to grow your lab as testing demands change.



Reducing TATs, costs and staff time requirements with Beckman Coulter automation, autoverification and REMISOL Advance. One health system's story. English Power Processor Sample Handling System; Two UniCel Dx C 800 clinical chemistry analyzers; Two UniCel Dx I 800 immunoassay analyzers; 3,000-tube stockyard;



POWER EXPRESS Empower Your Health System Network with Connectivity, Flexibility, and High-throughput Capacity . Consolidate Your Pre-Analytical, Analytical, and Post-Analytical Functions Into One Efficient Workflow ANALYTICAL BECKMAN COULTER INFORMATICS SOLUTIONS* REMISOL Advance DxONE Command Central DxONE Inventory Manager ???

BECKMAN COULTER POWER PROCESSOR SYSTEM



Page 2 Power Express In-Lab Training Manual
Page 2 of 147 Version 2.0 (July 2016) Beckman
Coulter Professional Development Page 3 Power
Express system, refer to the analyzer specific
manual. SCOPE The scope of this manual is the
Power Express sample handling system and the
modules that can be configured on the system.

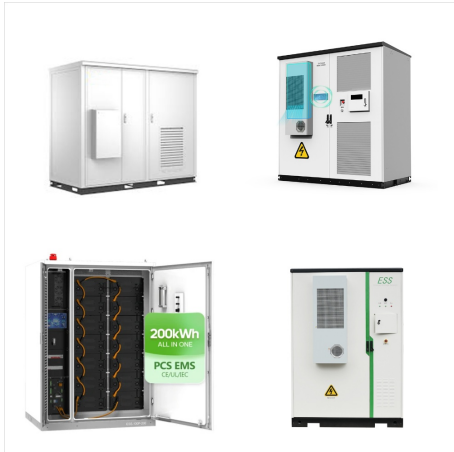


10-position priority-load area, Power Link delivers
automated specimen processing power and
flexibility to meet your laboratory workload
challenges. Suggested sample tubes for the Power
Link system include BD or Greiner: 13 x 75 mm or
13 x 100 mm sizes. Contact your Beckman Coulter
representative for additional sample tube details.
AU680 Power



POWER EXPRESS Empower Your Health System
Network with Connectivity, Flexibility, and
High-throughput Capacity . Consolidate Your
Pre-Analytical, Analytical, and Post-Analytical
Functions Into One Efficient Workflow ANALYTICAL
BECKMAN COULTER INFORMATICS
SOLUTIONS* REMISOL Advance DxONE
Command Central DxONE Inventory Manager ???

BECKMAN COULTER POWER PROCESSOR SYSTEM



Beckman Coulter - Power Express Laboratory Automation System Greater freedom to focus on patient care, Power Express provides a total laboratory automation solution with the flexibility to connect with select third-party analyzers * Prioritize STAT samples by placing into the system via dedicated STAT rack * Alleviate non-value added activities

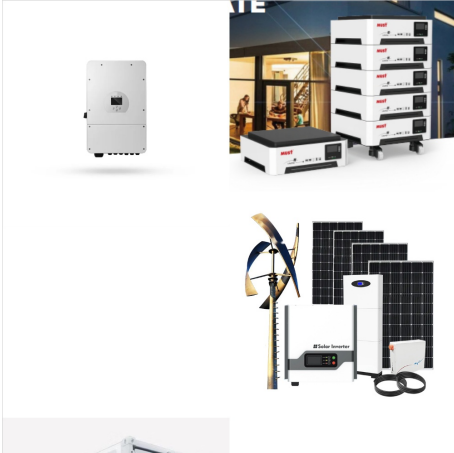


Beckman Coulter's complete range of clinical automated lab systems help you improve workflow for maximum productivity and reliability. Find out more now. Automation Systems DxA 5000 Total Lab Automation DxA 5000 Fit Automation System Advanced Informatics Remisol Advance Middleware Remote Services Power Express; Contact a sales



, Prato Hospital has had a Corelab with analyzers (DxC, Dxl) connected to the automated system Power Processor (PP) provided by Beckman Coulter. When the New Hospital opened in 2014, the automated system was replaced by the new High Speed automated system Power Express (PE) for managing analytical platforms AU5822, AU680, Dxl of

BECKMAN COULTER POWER PROCESSOR SYSTEM



The Power Processor Generic Connection Module is specifically designed to support the outboard sampling method based on point-in space pipetting technology aligned with the CSLI guidelines. This method is used to establish connection with Beckman Coulter's UniCel DxI 800 Immunoassay System. Power Processor software version



POWER PROCESSOR ??? Beckman Coulter The Power Processor can revolutionize your lab's entire operation, enhancing productivity, operator safety and accuracy, as well as significantly reducing labor costs and eliminating opportunities for errors for improved patient safety. By automating your pre-analytical testing processes, the Power Processor helps ensure ???



includes a Power Processor, online, pre-analytical system with a Beckman Coulter centrifuge, decapper, recapper, aliquoting unit, 10,880-tube refrigerated stockyard running in connection with one AU5822 Clinical Biochemistry System and two ???