

How are the South Sandwich Islands managed?

The South Sandwich Islands, actively volcanic, consist of a 390-km-long chain of 11 main islands. Fisheries in the South Georgia Maritime Zone are managed using an ecosystem approach aiming to conserve the marine environment. Key Words: sub-Antarctic, South Georgia, South Sandwich Islands, conservation, management, fisheries, tourism.

Who owns South Georgia and the South Sandwich Islands?

The United Kingdom claimed sovereignty over South Georgia in 1775 and the South Sandwich Islands in 1908. The territory of "South Georgia and the South Sandwich Islands" was formed in 1985; previously, it had been governed as part of the Falkland Islands Dependencies.

What is the ccTLD for South Georgia and the South Sandwich Islands?

The Internet country code top-level domain (ccTLD) for South Georgia and the South Sandwich Islands is .gs. The parts of the islands that are not permanently covered in snow or ice are part of the Scotia Sea Islands tundra ecoregion.

Is South Georgia a small island?

It is a remote and inhospitable collection of islands, consisting of South Georgia and a chain of smaller islands known as the South Sandwich Islands. South Georgia is 165 kilometres (103 mi) long and 35 kilometres (22 mi) wide and is by far the largest island in the territory.

Are South Georgia and the South Sandwich Islands mountainous?

South Georgia and the South Sandwich Islands are a collection of islands in the South Atlantic Ocean. Most of the islands, rising steeply from the sea, are rugged and mountainous. At higher elevations, the islands are permanently covered with ice and snow.

What happened to South Georgia and the South Sandwich Islands?

In 1985, South Georgia and the South Sandwich Islands ceased to be administered as a Falkland Islands

BENEFICIOS PANELES SOLARES SOUTH GEORGIA AND SOUTH SANDWICH ISLANDS



Dependency and became a separate territory. The King Edward Point base, which had become a small military garrison after the Falklands War, returned to civilian use in 2001 and is now operated by the British Antarctic Survey.



Agricultor limpiando paneles solares Desventaja de la bomba de agua solar: Costos iniciales elevados . El costo inicial de una bomba de agua solar puede ser una barrera para algunos agricultores, ya que se debe comprar la bomba de agua y los paneles de una vez.. Sin embargo, a largo plazo, las bombas solares son la opción más económica para el riego.



British overseas territory in the Southern Atlantic Ocean. This page was last edited on 27 November 2024, at 11:44. All structured data from the main, Property, Lexeme, and EntitySchema namespaces is available under the Creative Commons CC0 License; text in the other namespaces is available under the Creative Commons Attribution-ShareAlike License; ???

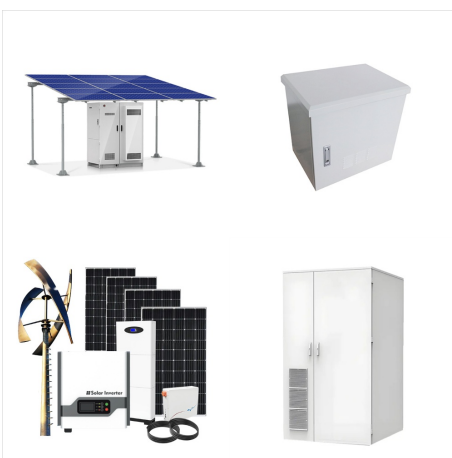
BENEFICIOS PANELES SOLARES SOUTH GEORGIA AND SOUTH SANDWICH ISLANDS



? 1/4 ?? 1/4 ? South Georgia and the South
Sandwich Islands, SGSSI ? 1/4 ????? , ???



A.D. Rogers, C. Yesson, and P. Gravestock, "A
Biophysical and Economic Profile of South Georgia
and the South Sandwich Islands as Potential
Large-Scale Antarctic Protected Areas," Advances
in Marine Biology 70 (2015): 1-286, <https://>



?Por qu? utilizando paneles solares cuid?s el medio
ambiente? La energ?a solar es una de las
herramientas m?s eficientes en la lucha contra el
cambio clim?tico. Se destaca sobre todo por no
emitir sustancias t?xicas ni contaminantes del aire,
por otra parte, no genera residuos ni contaminaci?n
del agua.

BENEFICIOS PANELES SOLARES SOUTH GEORGIA AND SOUTH SANDWICH ISLANDS



The strategy has also been developed in conjunction with the Government of South Georgia and the South Sandwich Islands, who will also publish, on their website, their own complementary 5-year



South Georgia and the South Sandwich Islands are a collection of islands in the South Atlantic Ocean. Most of the islands, rising steeply from the sea, are rugged and mountainous. At higher elevations, the islands are permanently covered with ice and snow.



1 South Georgia Island is the only inhabited island, with the summer-only settlement of Grytviken, and the only one regularly visited by cruise ships. Minor islands are ranged along its north coast ??? those visited by cruises are Willis, Bird, Albatross and Prion, and Cooper. The south coast is exposed to raging winds and waves and is seldom visited ??? Annenkov is the only large island ???

BENEFICIOS PANELES SOLARES SOUTH GEORGIA AND SOUTH SANDWICH ISLANDS



? 1/4 ?? 1/4 ?South Georgia and the South
Sandwich Islands,SGSSI? 1/4 ?????,???,3592???
700,311???, ???



A list of 49 approved visitor sites is included as an
annex in the Visiting South Georgia.Some approved
sites are only suitable for Zodiac cruising and cruise
ships carrying in excess of 200 passengers are only
permitted to land passengers at certain sites.



?Por qu? utilizando paneles solares cuid?s el medio
ambiente? La energ?a solar es una de las
herramientas m?s eficientes en la lucha contra el
cambio clim?tico. Se destaca sobre todo por ???

BENEFICIOS PANELES SOLARES SOUTH GEORGIA AND SOUTH SANDWICH ISLANDS



South Georgia and South Sandwich Islands. Key Data. General information: Constitutional status: Overseas Territory of the United Kingdom; Land area: 3,903 square kilometers; Population: no permanent population; Energy transition: Installed capacity in 2019: MW; Power generation in 2020: GWh; Renewable energy generation capacity: MW; Main energy



The ultimate goal of the Argentinian forces was to annex the South Sandwich Islands, South Georgia, and the Falklands. Despite these plans, however, the British moved in to re-take the territory, and on June 20, 1982, the British were successful in defeating the invading Argentine forces. By 1985, both South Georgia and the South Sandwich



The South Sandwich Islands, actively volcanic, consist of a 390-km-long chain of 11 main islands. Fisheries in the South Georgia Maritime Zone are managed using an ecosystem approach aiming to conserve the marine environment.

BENEFICIOS PANELES SOLARES SOUTH GEORGIA AND SOUTH SANDWICH ISLANDS



Beneficios de las cubiertas solares con Panel Sandwich. La combinaci?n de placas solares en cubierta panel sandwich presenta una serie de ventajas significativas: Eficiencia energ?tica: Permiten aprovechar al m?ximo la energ?a solar, reduciendo la dependencia de fuentes de energ?a no renovables y disminuyendo los costos energ?ticos a

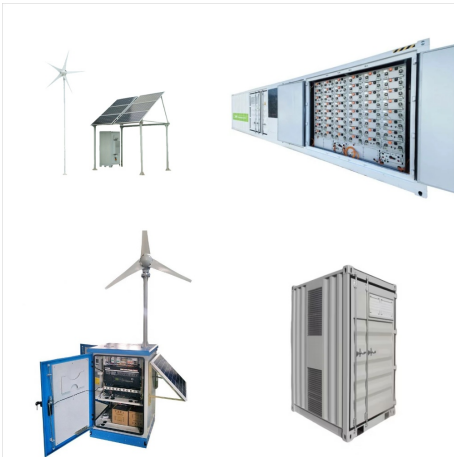


Summary. Welcome to our South Georgia & Antarctic Odyssey featuring the South Sandwich Islands expedition.. On this epic voyage, not only will you explore the famed white continent, discover the Falklands~Malvinas, encounter the wildlife haven in South Georgia, you will also sail to the South Sandwich Islands, a chain of seldom-visited volcanic islands located 740 km (460 ???



South Georgia and the South Sandwich Islands are a collection of exceptionally remote islands in the Southern Atlantic. Although considered as one entity they represent two physically distinct island groups,

BENEFICIOS PANELES SOLARES SOUTH GEORGIA AND SOUTH SANDWICH ISLANDS



Together, South Georgia and the South Sandwich Islands form part of the Scotia Arc, which extends from the tip of South America to Antarctica (and also includes the South Shetland and South Orkney Islands, though these are not part of the British dependency). The island of South Georgia is 105 mi (170 km) long, and about 25 mi (40 km) wide.



The future marine protection of South Georgia and the South Sandwich Islands has been a long-standing campaign for the APPG and our associate members, including the Pew Trusts, and featured in our recent "Keeping 1.5 alive" report, which sets out nine priorities for the forthcoming COP28 summit, which begins next week.



Closeup map of the South Sandwich Islands NASA satellite photograph of Montagu Island. The South Sandwich Islands comprise 11 mostly volcanic islands (excluding tiny satellite islands and offshore rocks), with some active volcanoes. They form an island arc running north-south in the region 56°18'S-59°27'S, 26°23'-28°08'W, between about 350 and 500 mi (300 and 430 nmi; ???

BENEFICIOS PANELES SOLARES SOUTH GEORGIA AND SOUTH SANDWICH ISLANDS



South Georgia and the South Sandwich Islands are a collection of islands in the South Atlantic Ocean. Most of the islands, rising steeply from the sea, are rugged and mountainous. At higher elevations, the islands are permanently covered ???