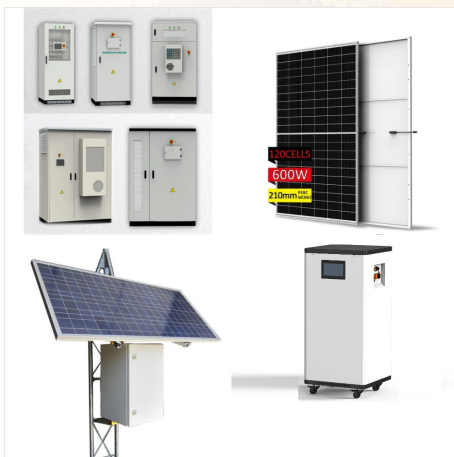




Illouloufin Solar Power Station, is a 50 megawatts (67,000 hp) solar power plant in Benin, whose first 25 MW was commissioned on 19 July 2022, and the next 25 MW is under construction and is expected to come online in 2025.



The resulting model calculations show that, in the least-cost scenario, to achieve affordable, universal electricity access in Benin, 10-50% of the newly connected population will get power from decentralised, off-grid technologies, mainly based on solar PV.

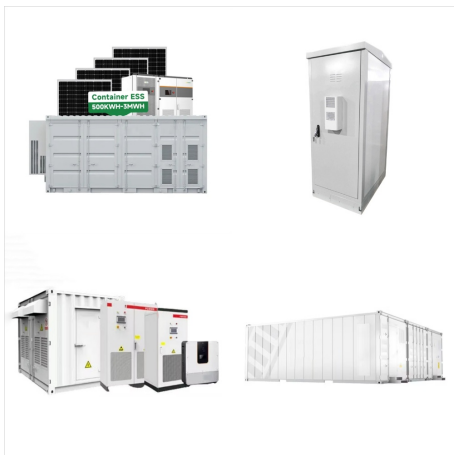


**Solar Home Systems:** The European Investment Bank has installed 107,000 solar home systems in Benin, offering them at a daily cost of 20 cents per day for users. **Utility-Scale Photovoltaic Power Plants:** The levelized cost of energy from these large-scale solar plants ranges between USD 0.11 and USD 0.125 per kWh.

# BENIN NET METERED SOLAR PV SYSTEM



To provide access to clean energy services to its communities, the government of Benin has recently inaugurated a 25-MW solar PV system. The solar power plant of Illouloufin is the first solar plant integrated into the grid with a generation capacity of 25 MW. It includes 47 212 solar PV modules with 530 W each, 113 inverters and 6 transformer



The resulting model calculations show that, in the least-cost scenario, to achieve affordable, universal electricity access in Benin, 10-50% of the newly connected population will ???

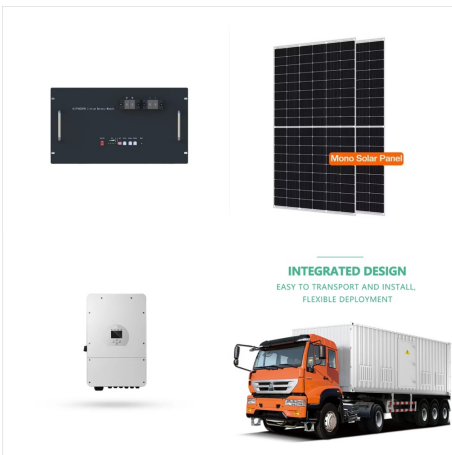


So far, we have conducted calculations to evaluate the solar photovoltaic (PV) potential in 2 locations across Benin. This analysis provides insights into each city/location's potential for harnessing solar energy through PV installations.

# BENIN NET METERED SOLAR PV SYSTEM



"Net metering" is a mechanism in which a self-generating customer can inject the surplus into the grid and receives, for each kWh injected, a compensation on his/her electricity bill



To provide access to clean energy services to its communities, the government of Benin has recently inaugurated a 25-MW solar PV system. The solar power plant of Illouloufin is the first solar plant integrated into the grid with ???



Construction launched on 12 November at the 25MWp Forsun Solar PV plant in Pob?, Benin. The project is the result of cooperation between the French Development Agency (AFD), the European Union and the Beninese government to invest almost 16 billion West African Francs (\$25.58 million) into building the solar plant.

# BENIN NET METERED SOLAR PV SYSTEM



Investing in utility-scale PV systems could help Benin increase its electricity access rate and mitigate greenhouse gas emissions for sustainable development. The study aims to alert stakeholders, decision-makers, and investors toward developing the Benin utility-scale solar PV sector.



"Benin targets to increase the share of solar to 35% of the energy mix by 2030.<sup>24</sup> "The National Fund for Environment and Climate (FNEC) is a funding mechanism for promoting sustainable development in Benin.<sup>9</sup> "The country receives high levels of solar irradiation of 5.3 kWh/m<sup>2</sup>/day and specific yield of 4.2 kWh/kWp/day indicating