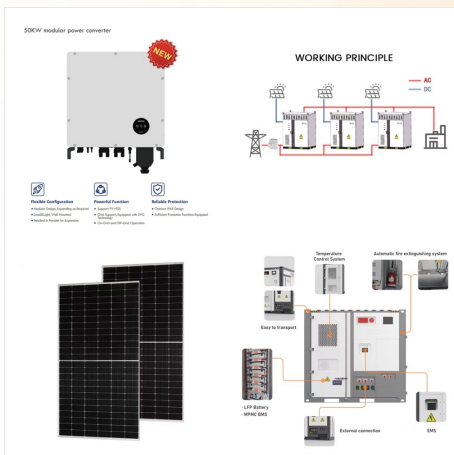




The plant was built by a consortium featuring MAN Energy Solutions and BWSC and was inaugurated by Dona Jean-Claude Houssou, the Minister for Energy of Benin, as well as representatives of MAN Energy Solutions and BWSC.



Erika Wilson Becomes BEAMA's First Female President During BEAMA's Annual Conference in London "Target 2030: A New Era for Industrial Growth and Sustainability in the UK", BEAMA announced a new president, Erika Wilson.



Our award submission explores Wilson Power Solutions" collaboration with Tesla, which represents a powerful synergy between energy innovation and network infrastructure manufacturers within the Battery Energy Storage System (BESS) market.



Having supplied transformers to all three of Europe's largest operational BESS by MWh, including Clay Tye, Bumpers, and Pillswood, Wilson Power Solutions continues to lead the way in providing bespoke solutions for ???



Wilson Power Solutions has announced that Transformers manufactured by a Leeds firm are playing a critical role in Europe's largest battery energy storage system (BESS) by megawatt hours, which has just come online in East Yorkshire.



This award recognises outstanding collaboration between companies that successfully contribute to advancing Net Zero, sustainability, and circularity within our industry or the broader market. Our award submission explores Wilson Power Solutions' collaboration with Tesla, which [???



Having supplied transformers to all three of Europe's largest operational BESS by MWh, including Clay Tye, Bumpers, and Pillswood, Wilson Power Solutions continues to lead the way in providing bespoke solutions for transformative energy projects.



Wilson Power Solutions has announced that Transformers manufactured by a Leeds firm are playing a critical role in Europe's largest battery energy storage system (BESS) by megawatt hours, which has just come ???



The successful implementation of the BESS featuring Tesla's Megapack 2XL demonstrates the potential for large-scale energy storage solutions to support the grid, integrate renewable sources, and ensure a ???



The successful implementation of the BESS featuring Tesla's Megapack 2XL demonstrates the potential for large-scale energy storage solutions to support the grid, integrate renewable sources, and ensure a stable and sustainable energy supply.



A consortium of MAN Diesel & Turbo and Danish EPC specialist, BWSC (Burmeister & Wain Scandinavian Contractor) has won the contract to build the new 127 MW Maria Gleta power plant near the city of Cotonou, Benin.