

Which lithium battery is best for an RV?

While there are various lithium battery chemistries, Lithium Iron Phosphate (LiFePO<sub>4</sub>) has become the preferred choice for RV applications. LiFePO<sub>4</sub> batteries are renowned for their safety, stability, long life cycles, and consistent performance, making them an ideal energy solution for the mobile and varying demands of RV use.

How many lithium batteries do I need for my RV?

Since lead-acid batteries can only be drained to (at most) 50% of their capacity without harm, you may only need half as many lithium batteries for the same usable power. The same is true if your RV has a bank of 6V batteries. In this case, each pair of 6V batteries could be replaced with a single 12V lithium battery (more on this later).

Which battery is best for a flooded RV?

AGM batteries are now the most popular lead-acid RV batteries. While AGM batteries are slightly more expensive than the other two, flooded batteries require consistent maintenance and gel batteries have low discharge/recharge rates. If you are going with lead-acid batteries, choose AGM.

Can a lithium battery be installed inside an RV?

But, because lithium batteries don't outgas when operating (like flooded lead-acid batteries do), they can be installed inside your RV's living space to keep them warm. This also keeps them out of sight...making sure no one decides to walk off with your (expensive) new lithium batteries.

Are lithium batteries good for RVing?

With lithium batteries, enthusiasts of RVing don't have to do things like refilling the distilled water on the road. Tolerance: Lithium batteries handle temperature deviations superbly which allows them to maintain stable operation as ambient temperature increases and decreases.

Should you upgrade to a lithium RV battery?

Upgrade to lithium RV batteries to make your boondocking and off-grid camping experiences easier. Additionally, solar panels are an option for charging lithium batteries. These are especially beneficial for those

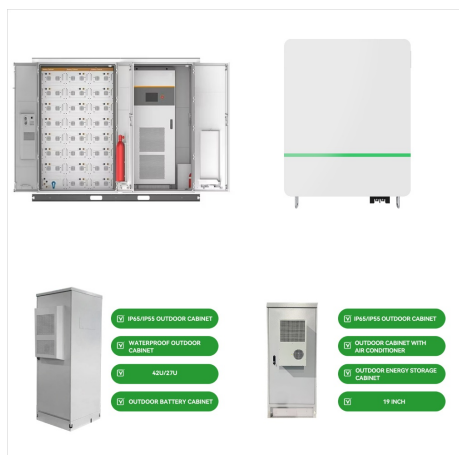
# BEST LITHIUM IRON PHOSPHATE BATTERY FOR RV



who want to camp in areas where an electrical outlet may not always be available.



That's why we looked at numerous factors that the best batteries for an RV or campervan should have, including battery lifespan, efficiency, safety rating, and price. Let's dive into our list of the best motorhome batteries with our #1 pick to kick things off??? Our #1 Pick ??? Renogy Lithium-Iron Phosphate Battery 170ah



Lite 12V 230Ah Plus Low-Temp Protection LiFePO4 Battery Built-in 200A BMS, Max 2944Wh Energy, Lithium Iron Phosphate Battery Perfect for Trolling Motors, Yacht, Marine, Boat, RV, Home Energy 4.5 out of 5 stars 2,153



Paoweric 12V 200Ah LiFePO4 Lithium Battery with 150A BMS, Max. 1920W Power, 10000+ Cycles, 10-Year Lifespan, Compact Lithium Iron Phosphate Battery for Solar, RV, Home Energy Storage LGECOLFP 12V LiFePO4 Battery 100Ah 2Pack, Lithium Batteries with 100A BMS, 7000+Deep Cycles 12V Lithium Battery, 1280Wh Output Power, Support in Series/Parallel

# BEST LITHIUM IRON PHOSPHATE BATTERY FOR RV



This lithium iron phosphate battery is specially designed for cold-weather performance. LT Series batteries can safely charge at temperatures down to  $-20^{\circ}\text{C}$  ( $-4^{\circ}\text{F}$ ) using a standard charger. Now you know how to select the best lithium RV batteries. But do you know who can deliver them right to your door? We specialize in lithium batteries

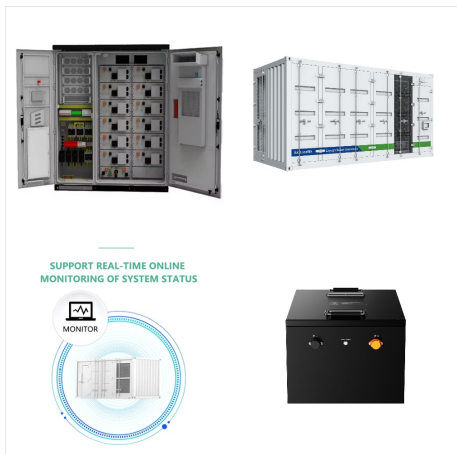


Smaller and lighter ??? Thanks to its Lithium Iron Phosphate ( $\text{LiFePO}_4$ ) technology, this battery is 25% smaller and half the weight of a lead-acid battery, while providing the same amount of power. Long lifespan ??? With a lifespan of over 2000 cycles at 100% depth of discharge, this battery lasts at least 5 times longer than a lead-acid battery



Lightweight RELiON lithium iron phosphate ( $\text{LiFePO}_4$ ) batteries are maintenance-free, fast-charging and environmentally-friendly to provide reliable power and peace of mind while you enjoy some well-earned peace and quiet. View All RV Lithium Batteries

# BEST LITHIUM IRON PHOSPHATE BATTERY FOR RV



Best Sellers. \$925. \$749. 100Ah 12V LiFePO4 Battery. Shop Now. \$2,149. \$2,499. 270Ah 12V LiFePO4 Battery. Ready to upgrade your RV, van, boat, or off-grid solar setup to lithium-ion batteries? We've powered rigs, vessels, and properties across the world! Our industry-leading lithium iron phosphate (LiFePO4) batteries are recognized



Pros: Works with 12-48V lithium and lead acid batteries, has Bluetooth with great range, has a programmable alarm and relay. After testing 4 of the best RV and solar battery monitors for over 2 months, I think the Victron SmartShunt is the best battery monitor for most people. It's easy to install and set up, it works with nearly every



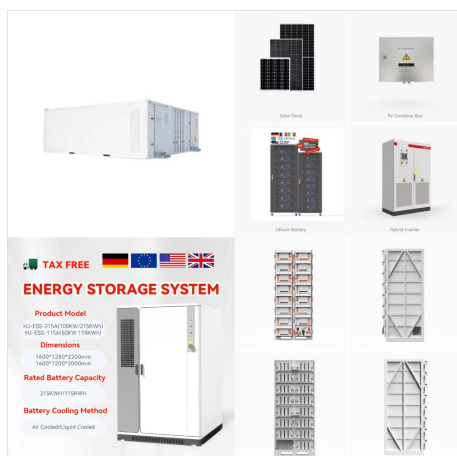
1) How to Store Lithium RV Batteries for Winter 1.1) Charge the Battery 1.1.1) Never Charge Below 32°F / 0°C 1.1.2) Warm the Battery Before Charging 1.2) Disable the Heating Function 1.3) Disconnect From Any Load 1.4) Turn Off/Disable Charging 1.5) Store in a Dry, Temperate Location 1.6) Periodically Check the Battery State of Charge 2) Are Lithium RV ???



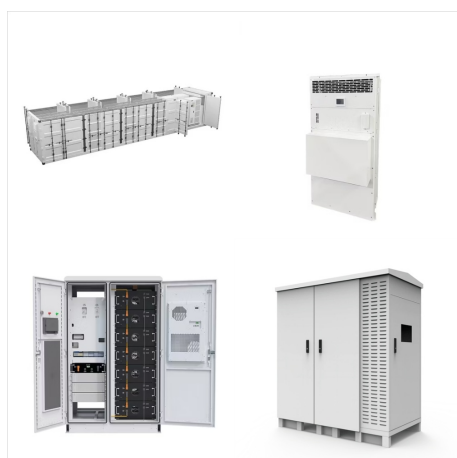
# BEST LITHIUM IRON PHOSPHATE BATTERY FOR RV



The lithium batteries that are highly popular for use in RVs are lithium iron phosphate batteries. These are top choices due to their long lifespan, low toxicity, high safety, and relatively lower cost. Lithium batteries are a game changer in terms of performance. Some of the major performance benefits and key advantages are:



LiFePO<sub>4</sub> batteries, or Lithium Iron Phosphate batteries, are advanced rechargeable batteries known for their longevity, safety, and energy efficiency. They utilize iron phosphate as a cathode material, which offers enhanced stability and reduces the risk of thermal runaway, making them safer than other lithium-ion battery chemistries.

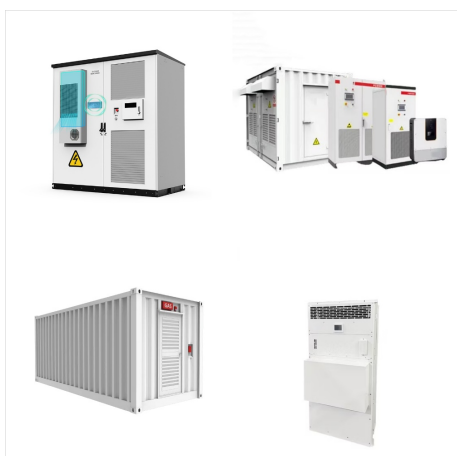


Most older RVs were equipped with lead-acid batteries, which are still very common today. But if you need to replace (or simply want to upgrade) your existing batteries, there are several reasons to consider a lithium RV battery. Lithium batteries last longer than their lead-acid counterparts.

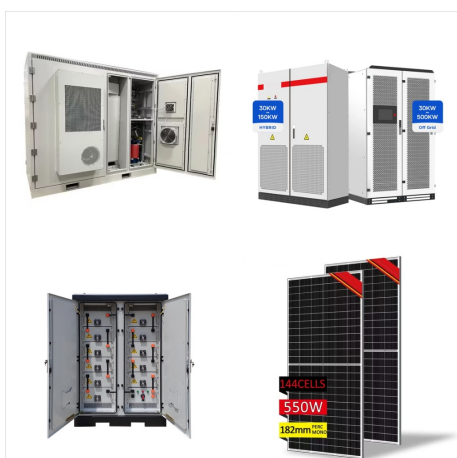
# BEST LITHIUM IRON PHOSPHATE BATTERY FOR RV



Now that you know more about how and why to choose lithium batteries, let's review some of the best possible batteries for you and your RV. RB100-LT. The RB100-LT is a 12V 100Ah lithium battery and is part of RELiON's Low-Temperature Series. This lithium iron phosphate battery is specially designed for cold weather performance.



Lithium batteries, particularly lithium iron phosphate (LiFePO4) batteries, have emerged as the best choice for RV applications due to their superior performance and reliability. Long lifespan: Lithium batteries, such as lithium iron phosphate (LiFePO4) batteries, have significantly longer lifespan compared to lead-acid batteries.



RV lithium battery for best deep cycle applications. Recreational vehicle 12V LiFePO4 and 24V LiFePO4. Free shipping on lithium RV batteries. Canbat lithium iron phosphate batteries are the most reliable in Canada. They are lightweight, maintenance-free and fast-charging. Canbat lithium cells are designed with advanced LiFePO4 technology

# BEST LITHIUM IRON PHOSPHATE BATTERY FOR RV



RV lithium batteries are rechargeable 12-volt batteries that have become a popular alternative to lead-acid batteries, particularly for RVers who spend a lot of time off the grid and/or who use solar power. RV lithium batteries are based on a newer, more efficient lithium-ion technology known as lithium iron phosphate (or LiFePO<sub>4</sub> for short).



Best AGM Deep Cycle Battery: XS-Power-D3100;  
Best Lithium-Ion Deep Cycle Battery: Battle Born LiFePO<sub>4</sub> 12V Deep Cycle Battery; Budget-Friendly Option: WindyNation 12V Deep Cycle Battery; Premium Choice: Renogy 12V Lithium-Iron Phosphate Battery; Best for Solar Charging: Universal Power Group UB121000 12V Deep Cycle Battery

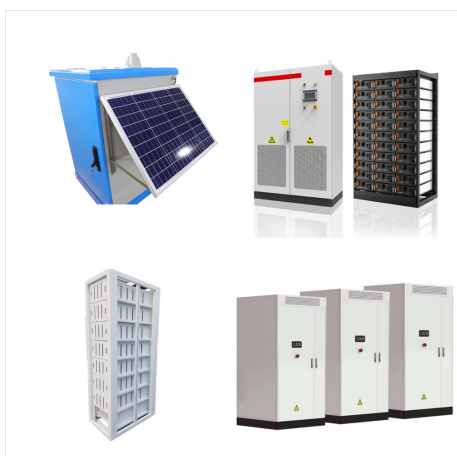


Battery Chemistry: Lithium Iron Phosphate (LFP/LiFePO<sub>4</sub>) Cycle Life: 3000 Cycles to +/-80% Capacity; Depth of Discharge: 100%; Warranty: Five years (no cycle life restrictions) Choosing the best lithium battery for your RV can make a big difference in your travel experience. From the all-in-one EcoFlow Power Kits to the robust DELTA Pro for

# BEST LITHIUM IRON PHOSPHATE BATTERY FOR RV



The best current option for RVs is a battery based on lithium iron phosphate (LiFePO<sub>4</sub>). LiFePO<sub>4</sub> is one of the safest battery chemistries on the market. It has a long lifespan, charges quickly, discharges at a consistent rate, and has an almost fully usable amount of ???



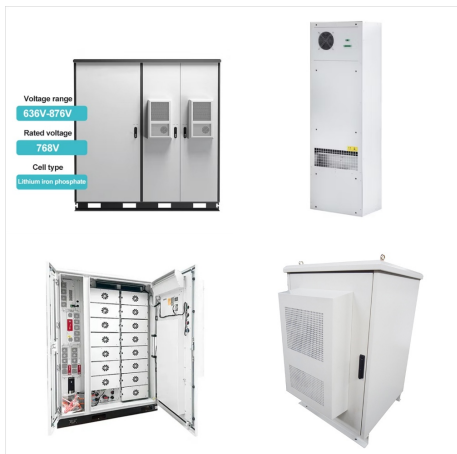
Most of these lithium RV batteries provide a 12-volt DC power output. And it's worth noting here that some of the appliances in your RV probably require AC current in order to be powered sufficiently. Fortunately, this doesn't mean that you'll need to find a battery that produces AC output.



This battery can be used for RV/Camper, Overland/Van, Marine, and Grid Applications also. Renogy Li 100Ah 12V Smart Lithium Iron Phosphate Battery. It is a 100Ah 12V rechargeable battery. Renogy Li is another of the best LiFePO<sub>4</sub> battery. Which is the best lithium battery? Battle Born- 100Ah 12V LiFePO<sub>4</sub> deep cycle battery. Result:



# BEST LITHIUM IRON PHOSPHATE BATTERY FOR RV



While switching your RV to lithium batteries (Lithium Iron Phosphate or LiFePO<sub>4</sub> to be specific) is a fantastic upgrade, it can also require changing the settings on other components??? or even replacing those ???



The type you are most likely to find used in RV lithium batteries is Lithium Iron Phosphate which is written as LiFePO<sub>4</sub>. In all lithium-based batteries, the cathode or positive side of the battery is made of some kind of lithium-based metal oxide, and the negative side or anode is typically made of graphite.



The SOK 200Ah 12V LiFePO<sub>4</sub> Battery is the best way to store solar power. It's safe, reliable, and built to last. Lion UT 1300 Lithium Battery. Are you looking for a powerful, yet lightweight battery for your electronic device? Look no further than the Lion UT 1300 Lithium Battery. This battery provides 1300mAh of power and only weighs 3.7 ounces.

# BEST LITHIUM IRON PHOSPHATE BATTERY FOR RV



To summarize, the RUIXU LiFePO4 Lithium Iron Phosphate Battery Pack is a great product. It is compact, long-lasting, and versatile. This power supply will provide adequate power space for those that have a solar or wind power setup. Buyer's Guide to Buying the Best Lithium RV Batteries. Each RV owner should always be familiar with lithium



Parallel Configuration. The positive and negative poles stay separated when installing lithium batteries in an RV in a parallel configuration. This means you connect positive to positive using the red battery cables and the black cables for the negatives. 30-amp RVs must use this configuration to maintain the 12-volt power level.