



What is the best roof direction for solar panels?

Going by the larger say, the best roof direction for solar panels is roughly south-facing, and this is known because the sun is mostly seen in the southern sky or the northern hemisphere. Finding the best roof direction for solar panels will significantly influence the success of your solar system installation.

Which roof is best for solar panels?

South-facing solar panel systems almost always generate the most electricity, but east-west roofs can work well for solar, too. The direction is more important than the angle. Angle is rarely a make-or-break factor, and most roof tilts will work fine--though there are some exceptions.

What is the Best Direction and angle for solar panels?

What's the best direction and angle for solar panels? For maximum output, the sweet spot for solar panels in the continental U.S. is facing roughly south and tilted between 15 and 40 degrees, according to the Department of Energy.

Which direction should solar panels face?

South is the best direction for solar panels to face overall. In nearly all situations, you will see the greatest utility bill savings and quickest payback period if your panels point south instead of in another direction. South-facing panels have superior economics for the following reasons: They allow for better solar battery utilization.

Should solar panels be facing south or tilted?

It is noted that solar panels facing south and tilted between 15 and 40 degrees can improve energy output by up to 30% or more. However, factors such as roof slope and proximity to the equator may have you considering other directions.

Should solar panels be installed on a roof?

Absolutely. Pick an angle that maximizes solar energy potential for your location. Most people will likely install panels at the angle of their roof, but you might have the option in some cases, like if you're installing ground-mounted panels.

BEST SIDE OF ROOF FOR SOLAR PANELS



An old or weak roof: You don't want to put solar panels on a roof that can't support the extra pressure. If your roof is a bit on the older side or has damage, it might be best to repair your roof



The flip side of the theft/security question may be during storage. Portable solar panels can be securely stored out of sight, which would be impractical with a roof-mounted system. Portable vs Roof-Mounted Solar Panels: Which is Best? The question of whether roof-mounted or portable solar panels are best can only be answered by each RVer



But here in the UK, which gets less than half the annual sunshine of South Africa (1,387 hours versus SA's 3,103), you need to put in a little more planning, and position your solar panels to capture maximum sunlight. The best direction for solar panels is the same wherever you are in the UK: facing south, and pitched at 40 degrees.

BEST SIDE OF ROOF FOR SOLAR PANELS



In this article, we'll review five different materials to see which one makes the best roof for solar panels. Best roof materials for solar Composite shingles. This is the most common, and perhaps best, roof material on which to install solar panels. Because composite shingles are so common, this roof type offers the widest range of options



When you are installing solar panels, it is easy to overlook the roof itself. But in truth, the roof matters greatly. Most roofing materials can handle a residential solar power system, but certain jurisdictions may limit the use of solar panels on wooden roofing (like cedar shakes) because of fire risk. Regardless, the best roof for solar panels will offer solid support, ???



Residential rooftop solar panels on the south-facing side of the roof/house. Installing solar panels is relatively easy if you have conventional asphalt shingles or a standing seam metal roof. On the other hand, some roof tiles may be damaged if your roof uses a brittle material like slate or clay. However, if you work with professional solar

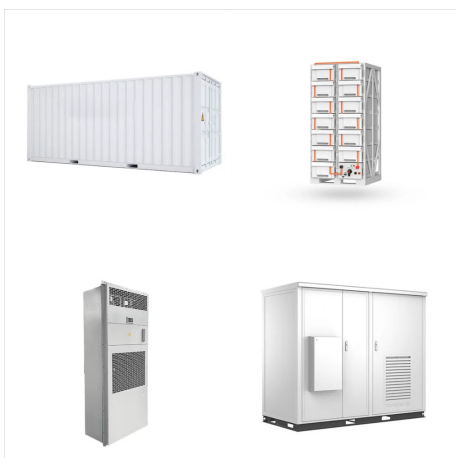
BEST SIDE OF ROOF FOR SOLAR PANELS



The type of solar panel you need depends on the type of system you want to install. For a traditional rooftop solar panel system, you'll usually want monocrystalline panels due to their high efficiency. If you have a big roof with a lot of space, you might choose polycrystalline panels to save money upfront. Want to DIY a portable solar setup on an RV or boat?



Ideally for solar power, one of those directions should be south (in the northern hemisphere) to face the equator, which receives more sun than the rest of the planet. Having a roof that



Thin-film solar panels have photovoltaic layers that are about 300 times thinner than those of crystalline panels. This feature makes these solar panels super flexible so that some of them can even be rolled up for storage. These solar panels typically have self-adhesive surfaces so you can easily "paste" them on metal and glass surfaces.

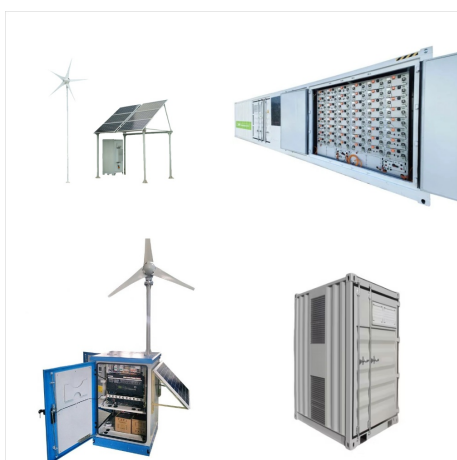
BEST SIDE OF ROOF FOR SOLAR PANELS



The best residential solar panels you can buy in 2024 1. SunPower Maxeon 6 AC: The best solar panels for UK homes. Price when reviewed: From around ?350 exc. installation (per panel) | Find out more at SunPower If you live in a small terraced house with limited roof space, overcast skies and seasonal leaf fall (basically, you live in the UK), SunPower's new ???



6. Adjust the Tilt Angle for Bifacial Optimization. The optimal tilt angle for bifacial panels may differ from monofacial installations. In many cases, a slightly steeper tilt (5-10 degrees more than the latitude angle) can improve overall energy yield by increasing rear-side production. Use advanced modeling software that accounts for bifacial gain to determine the ideal tilt for ???



Here's how an installer will decide if your roof is suitable for solar panels, including assessing its direction, usable space, and loft. Products; Resources; ???? A south-facing roof is best, but it's not the only viable option and your installer should leave around 40cm on each side of the array, as well as 3cm between every panel.

BEST SIDE OF ROOF FOR SOLAR PANELS



Best solar panels for efficiency. Another important solar panel feature is efficiency rating, or how much sunlight a panel converts into electricity.. The most efficient solar cell of any kind has an efficiency of 39.5%, but is designed for space applications, not an ordinary roof.. Residential solar panels typically range between 15% and 20%, with the industry-leading panels pushing 23%.



Which direction is best for solar panels? For homes in the UK, the optimal roof location for solar panels is south-facing. With a south-facing roof, your solar panels will produce the greatest amount of energy overall, but east or west-facing roofs can also work well and will produce energy for a large portion of the day.



Our picks for the best home solar panels in 2024. According to our research, the best solar panels available today are: Best overall solar panels: Qcells. Best solar panel warranty: Silfab Solar Best value solar panel: JA Solar Best solar panel ???

BEST SIDE OF ROOF FOR SOLAR PANELS



The best solar panel angle combines the ideal orientation (true south, for homes in the U.S.) with the right tilt for your location. This maximizes sunlight exposure and boosts energy production. Installing solar panels in suboptimal directions will lower their exposure to sunlight and reduce their energy production levels.



Power Loss Table: This table shows how much energy you can expect to get from almost any combination of solar panel direction and angle in the capital cities, compared to the "optimum" orientation. For example, in Brisbane, if your panels are facing West (270°) and are angled 20° from horizontal, you will get 89% of the energy compared to the optimum ???



Solar Panel Orientation in the UK. Your solar panel orientation is very important when it comes to maximising the amount of electricity that your solar panels will produce. As we're in the northern hemisphere the best solar panel orientation is obviously south, but: What happens if ???

BEST SIDE OF ROOF FOR SOLAR PANELS



Our picks for the best home solar panels in 2024. According to our research, the best solar panels available today are: Best overall solar panels: Qcells. Best solar panel warranty: Silfab Solar Best value solar panel: JA Solar Best solar panel performance: Jinko Solar Best availability: Canadian Solar You can learn more about our picks for the best solar panels in our video from solar ???

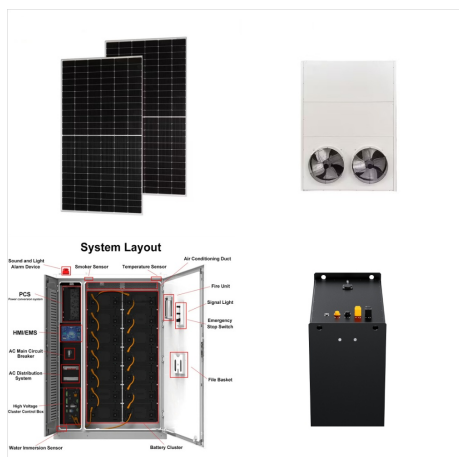


Having the solar panels on only one side of the roof will mean that that side of the roof will get more sun exposure and will be able to generate more electricity. However, The best roof exposure for solar panels is south-facing, with no shading. West- and east-facing roofs are also good choices, but they will produce less electricity than

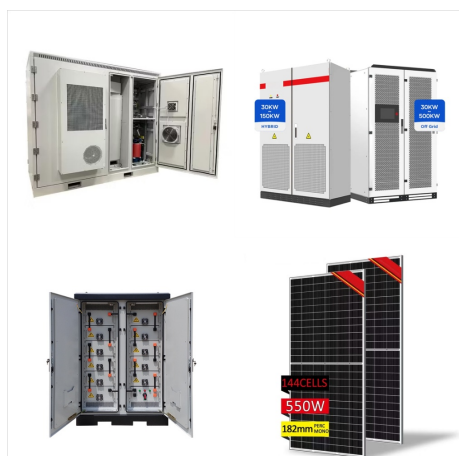


Best direction for solar panels. If you live in North America, the best direction for solar panels is facing south 1. Situated north of the equator (which puts the sun on the south side of houses), homeowners have the best opportunity to cover their power usage, top off batteries, and maximize offsets from net metering.

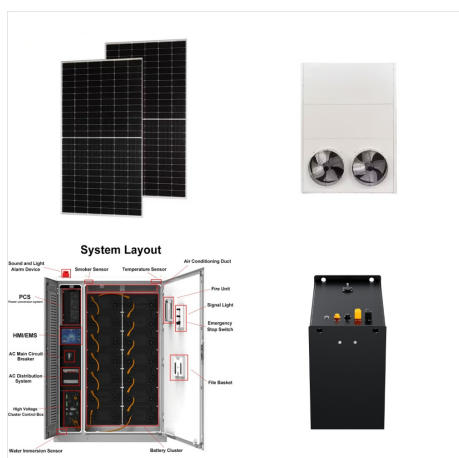
BEST SIDE OF ROOF FOR SOLAR PANELS



Up to 4% cash back? The tilt angle of solar panels should ideally align with the sun's path across the sky to maximize sunlight exposure. The roof pitch determines the initial angle which the panels are installed, and ???



Canstar Blue shares some tips on the best orientation for your solar panels. If you're planning to install solar panels on your roof, chances are you won't have much choice about the direction they face, as you'll have to conform to the structure and design of your roof. But if you're building or renovating and thinking about



Not Compatible With All Roofs. Solar panels work best on a shingle, tile, tar, or metal roof that's inclined toward the sun, facing south, east, or west. Flat roofs are also compatible with solar panels. Rooftops facing north or that have a steep or shallow incline don't usually get enough sun to generate electricity.

BEST SIDE OF ROOF FOR SOLAR PANELS



Use solar panel tracking systems; Install your solar panels on an east-facing roof; How Effective Are Solar Panels on East-Facing Roofs? Using an east-facing roof is an excellent alternative when mounting solar panels facing south is impossible. It is the second-best orientation, significantly more effective than west or north.