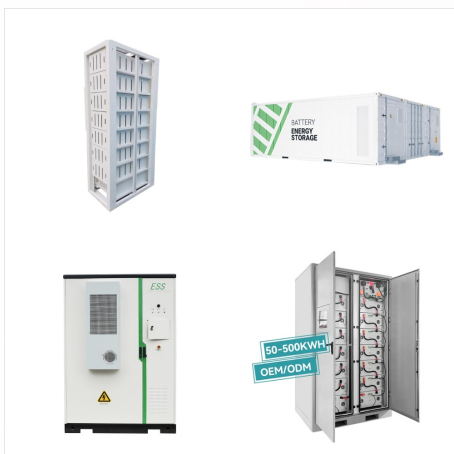




8 | S?O TOM? AND PR?NCIPE ASSESSMENT OF COST-EFFECTIVE MITIGATION OPTIONS FOR NDC IMPLEMENTATION | 9 EXECUTIVE SUMMARY The Nationally Determined Contribution (NDC) of Sao Tome and Principe, submitted in July 2021, has an economy-wide mitigation target of around 27% reduction of GHG emissions by 2030, compared to the

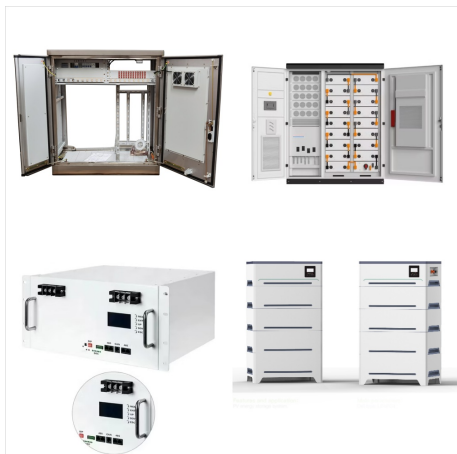


Lets explore the best places to visit in Sao Tome and Principe: 1. Sao Tome Source: flickr Sao Tome. A chocolate box of beautiful Romanesque churches and ornate colonial buildings, palm-lined boulevards and pretty plazas, Sao Tome is the only real city on these islands. The capital, and the economic hub, the political center and the main



S?o Tom? and Pr?ncipe (STP) is a small African archipelago that has been suffering from serious ongoing social, environmental, and economic constraints that have restricted its development

BEST SOLAR COMPANY CITY CITY SÃO TOMÁ AND PRÍNCEPE



Fast facts. Official name: Democratic Republic of S?o Tom? and Pr?ncipe Population: 223,561 (2024 est.) Area: 964 sq km Capital city: S?o Tom? Major languages: Portuguese, Forro, Cabo Verdian, French, Angolar, English Major religions: Catholic, Adventist Time zone: UTC 0 (Greenwich Mean Time) Interesting facts about S?o Tom? and Pr?ncipe



Sao Tome and Principe best time to visit. Sao Tome and Principe tourist season. Sao Tome and Principe travel health risk. S?o Tom? City is the capital and largest city of S?o Tom? and Pr?ncipe, situated on the northeastern coast of S?o Tom? Island. Check our complete resource page for all the best companies to use when you travel

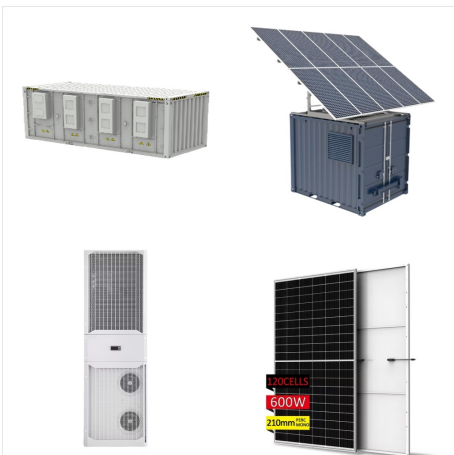


The Pico C?o Grande is a landmark needle-shaped volcanic plug peak in S?o Tom? and Pr?ncipe. The two islands that make up what is called S?o Tom? and Pr?ncipe were formed 30 million years ago during the Oligocene era, due to volcanic activity beneath deep water along the Cameroon Line. The volcanic soils [46] [47] of basalts and phonolites, dating to 3 million years, have been ???

BEST SOLAR COMPANY CITY CITY SÃO TOMÁS AND PRÍNCIPE



There are yellow shared taxis and buses on S?o Tom?, but no other public transport in S?o Tom? and Pr?ncipe. The streets in the city of S?o Tom? are paved, but large potholes are common. Major roads outside of town ???



Food and drink in S?o Tom? & Pr?ncipe. The staple item of the Santomean diet and standard restaurant fare is fish ??? grelhado ??? grilled, baked (asado) or to a lesser degree cooked/boiled (cozido). The most popular are flying fish (peixe voador), and you will see these cut open and laid out to dry on the beach or in drying sheds in large quantities.



Children of Principe lined up along the wall that closes off the city of Santo Ant?nio in their best clothes because it is Children's Day. we wander through what became the capital and seat of the diocese of the colony of S?o Tom? and Pr?ncipe, from 1753 to 1852, three centuries after the discovery of the archipelago in 1471, a few

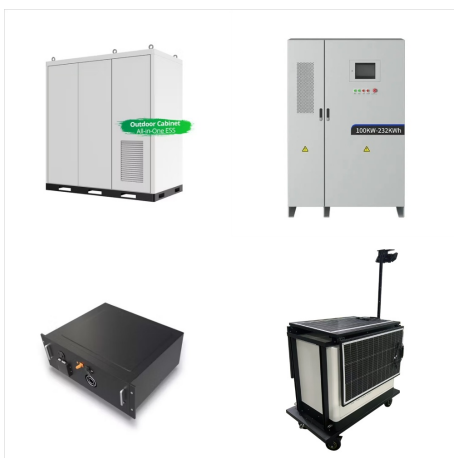
BEST SOLAR COMPANY CITY CITY SÃO TOMÁ AND PRÍNCIPE



Sao Tome and Principe COUNTRY INDICATORS
AND SDGS TOTAL ENERGY SUPPLY (TES) Sao
Tome Prn 0% 20% 40% 60% 80% 100% ea
Masdar City P.O. Box 236, Abu Dhabi United Arab
Emirates Sources: IRENA statistics, plus data from
the following sources: UN SDG Database

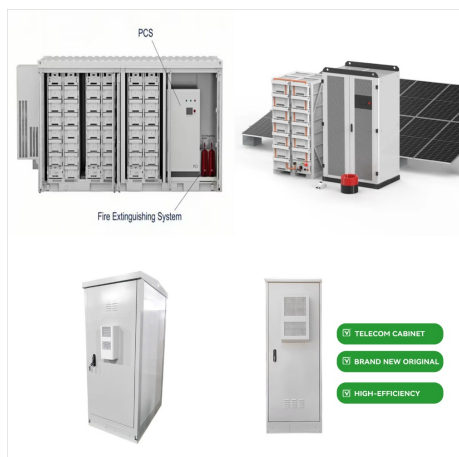


Why not start with these 12 fun facts about S?o
Tom? and Pr?ncipe. 1. The region is one of Africa's
tiniest. S?o Tom? and Pr?ncipe are two volcanic
islands off the coast of West Africa in the Gulf of
Guinea and is one of Africa's smallest countries.
The coordinates for S?o Tom? and Pr?ncipe are
0.3333? N, 6.7333? 2.



This can be done in Sao Tome city (Sao Tome) or in
Santo Antonio (Principe). As advice, simply
purchase a sim card (3-5 EUR) and a few euros
worth of credit to make local calls. On other
occasions that you require internet, try using free
???

BEST SOLAR COMPANY CITY CITY SÃO TOMÉ AND PRÍNCIPE



São Tomé and Príncipe, [a] officially the Democratic Republic of São Tomé and Príncipe, [b] is an island country in the Gulf of Guinea, off the western equatorial coast of Central Africa consists of two archipelagos around the two main islands of São Tomé and Príncipe, about 150 km (93.21 mi) apart and about 250 and 225 km (155 and 140 mi) off the northwestern coast of Gabon.



Find the best posts and communities about São Tomé And Príncipe on Reddit. Skip to main content
Can exchange them at bank on the island (bad rate). The best thing to do is go on the Main Street in the capital city. Here, there are numerous people who will shout "dobras, dobras" at you. (Sao Tome)
Best bet is AirBNB. Hotels tend to be



Elephantech Inc. is a startup based in Tokyo, Japan, and the first mass-producer of inkjet-printed circuit boards. The core technology of Elephantech is the Pure Additive???? method, a novel and sustainable manufacturing method utilizing metal inkjet printing technology, which is applicable to various types of electronic components and has a huge potential to reduce greenhouse gas ???

BEST SOLAR COMPANY CITY CITY SÃO TOMÉ AND PRÍNCIPE



For an industry that's been synonymous with slavery, and with gruelling working conditions after slavery was abolished, this is an incredibly meaningful development for São Tomé and Príncipe. Founded in 2004, CECAB is a cooperative of 37 associations of small-holder growers of organic cacao, based in the centre and north of São Tomé Island.



Location and Climate. Nestled on the equator in the Gulf of Guinea, São Tomé City is the capital of São Tomé and Príncipe, an archipelago off the western coast of Central Africa. The city enjoys a tropical climate, with high humidity and abundant rainfall year-round. Its lush greenery and warm temperatures make it a captivating destination for nature enthusiasts.



Box 3 ??? Typology of cookstoves in São Tomé and Príncipe 11 Box 4 ??? Kerosene is classified as a polluting fuel by WHO 48 TABLES Table 1 ??? Appliances by load level and associated capacity tiers 7 Table 2 ??? Distribution of enumeration areas and ???

BEST SOLAR COMPANY CITY CITY SÃO TOMÁ AND PRÁNCIPE



This can be done in Sao Tome city (Sao Tome) or in Santo Antonio (Principe). As advice, simply purchase a sim card (3-5 EUR) and a few euros worth of credit to make local calls. On other occasions that you require internet, try using free Wi-Fi ???



Why not start with these 12 fun facts about S?o Tom? and Pr?ncipe. 1. The region is one of Africa's tiniest. S?o Tom? and Pr?ncipe are two volcanic islands off the coast of West Africa in the Gulf of Guinea and is one of ???



S?o Tom? and Pr?ncipe had a population of 0.18 million in 2013 as shown in Table 1. In 2015, total electricity produced was 3 ktoe, of which 66.6 per cent the Municipal Water and Electricity Company (EMAE) have highlighted 14 potential sites (REEEP, 2012). Existing power plants are located on the capital city. By 2012, 68.3 per cent of

BEST SOLAR COMPANY CITY CITY SÃO TOMÉ AND PRÍNCIPE



Petrobras a Brazilian national oil company has disclosed the recent board approval on the acquisition of investment interest in three oil exploration blocks operated by Shell in Sao Tome and Principe which were formerly owned by Kosmo Energy. The renewed investment interest in the oil-rich nation offshore West African coast is seen as part of [??]

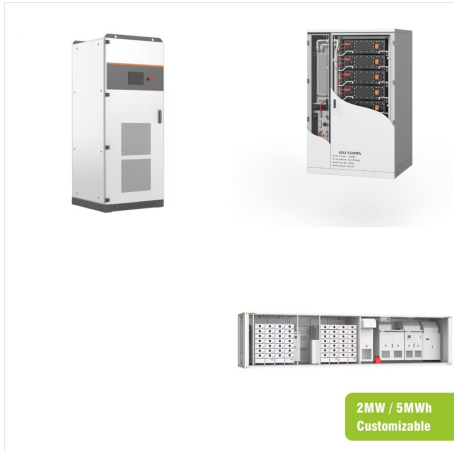


There are yellow shared taxis and buses on S?o Tom?, but no other public transport in S?o Tom? and Pr?ncipe. The streets in the city of S?o Tom? are paved, but large potholes are common. Major roads outside of town are also paved, but often in bad repair; pedestrians, cyclists, motorcyclists, and animals can be a major hazard, and small



A solar power plant will soon be built in S?o Tom? and Principe. The government of this Central African island country has chosen to build the plant south of Santo Amaro, a town located in the north of the island of S?o Tom?. The project is now subject to a call for tenders by the Santomean Ministry of Infrastructure and Natural Resources.

BEST SOLAR COMPANY CITY CITY SÃO TOMÉ AND PRÍNCIPE



The first phase of the program will include the installation of solar PV plants at the São Tomé international airport, as well as on the island of Príncipe, with capacities of 1.1 kW and 300 kW, respectively. Cleanwatts' local partner Pleno Ambiente STP will undertake the installation, operation, and maintenance works.



São Tomé and Príncipe, an island nation off the western coast of Central Africa, is known for its rich history and stunning architectural feats. This cathedral is the main church in the capital city of São Tomé and is known for its rich history and architectural beauty. The lodge uses solar power and other eco-friendly practices to



Uninhabited until stumbled upon by Portuguese explorers in 1471, São Tomé and Príncipe became a significant trading route stop and plantation hub. By 1900 they were the world's largest producer of cacao, garnering São Tomé and Príncipe ???