

How to power a backup camera?

Here's where we start to figure out how to power a backup camera. Let's go! Run the camera and power cable through the hole into the interior of your car. Locate the reverse light wires for your car. This is a tricky step, and you want to make sure that you do a good job. This is how to connect a backup camera to the reverse light.

How do I wire a backup camera?

1. Determine the power source: Before proceeding with the wiring, you need to determine where you will get the power for your backup camera. The most common options include tapping into the reverse light circuit, connecting to the fuse box, or using a separate power source.

How do you connect a backup camera to a car?

Strip the positive and negative wires on your reverse lights (make sure your car is powered off before you do this). Using a small screwdriver, separate some of the strands of the stripped wire, and splice in the power cable for your backup camera to them. Usually you can do this by looping the wires together.

How do I install a backup camera?

You have asked us to show you how to install a backup camera when your unit has backup camera prep, so here it is! The backup camper prep is simply a positive and negative wire loop from the clearance lights. Once connected, those wires supply power to the camera when the 7-way cord is plugged into the tow vehicle.

What do you need for a backup camera?

You will need a backup camera, video and power cables, a display monitor, wire connectors, and a wiring harness. Additionally, having a multimeter can be helpful for testing the connections and ensuring everything is properly wired. Next, you'll need to locate the power source for your camera.

Can you hook up a backup camera in a truck?

Since you're connecting your signal cable to the rear of the radio anyway, this is often a, dare we say, "convenient" way to grab power. Hooking up a backup camera in a truck can be a

BEST WAY TO GET POWER TO BACKUP CAMERA



challenged due to the length of the wire run on the outside of the body. Cris shows you how to run your backup camera wires safely.



Quick Top Choices for the Best RV Backup Cameras of 2022. If you don't need to read through the backup camera buyer's guide and just want my top picks??? here they are! Best Premium Wireless Backup Camera This wireless backup camera is for those who don't want to settle for anything less than the best. Pros



Backup Camera Installation. Many RVs come prepped for a backup camera. This is how to install it. Tools Required: New Camera. Wire Cutter. Screws. Electrical Tape. Drill W/Philips Bit. You have asked us to show you how to install a ???



Connect the Power Cable: Plug one end of the power cable into the camera's power input port and the other end into the power source, such as an outdoor-rated power outlet or a power adapter connected to the wired power source. Ensure a Secure Connection: Make sure the power cable is securely connected to both the camera and the power source

BEST WAY TO GET POWER TO BACKUP CAMERA



Features & First Impressions: The EWAY WiFi Backup Camera makes a solid first impression with robust features. It offers Standard Definition video capture resolution and night vision capabilities, powered by nine ???



To successfully install a rear-view camera, first remove your vehicle's rear license plate and interior trunk panel. Using a power drill, punch a small hole through the exposed license plate mounting area and run your camera's power and video cord through it. Attach a bare wire power cable to your camera's power connector, then strip your car's reverse light wires and ???



You will need a backup camera, a power drill, electrical tape, wire strippers, a voltage tester, soldering equipment (optional), and a wiring harness. It's also important to have access to the vehicle's wiring diagram to identify the reverse light wire. One way to find the reverse light wire is to consult your vehicle's wiring diagram

BEST WAY TO GET POWER TO BACKUP CAMERA



POWERING YOUR BACKUP CAMERA Backup cameras are an effective way to prevent car accidents that they are becoming mandatory for car manufacturers by 2018. However, many trucks, SUVs, and other old vehicles aren't equipped with the backup susyem yet. If your vehicle doesn't have a backup camera, you can still take advantage of this life-saving safety ???



Be sure the wire won't encounter any heat sources or pinch points along the way. The cable can travel along the roof or under your RV in split loom tubing. Connect your camera's power cable to the backup light circuit on your RV. Drill a hole if you need to (then use the sealant), or simply go through the license plate light hole. Remove



The best way of installation is to connect it to the positive side of the vehicle reversing lamp. Black wires, as usual, will be on the ground, while the red line will become positive power supply. Backup camera install Final report: This is what you need to install a backup camera. The installation process is not difficult, as you

BEST WAY TO GET POWER TO BACKUP CAMERA



Purchasing one made for your specific vehicle will make it easier to install than a standard aftermarket camera. So you can install it easily, look for a camera that mounts onto or directly behind your license plate. Look for backup cameras at consumer electronics stores.



supply the camera with power; make a good ground connection ; but Cris knows how to navigate that and shows you the best way from back to front. He uses a full-size SUV for this demonstration, but the same principles apply for any vehicle with a rear hatch. I just bought the Alpine back up camera and would like the recommended way to



RI Cardinal no power to prewired backup camera, any ideas Thanks 04-02-2017, 10:58 PM #2: dbledan. Senior Member . Join Date: Jan 2017. Location: KS. Posts: 2,369 On mine the manual states it runs all the way to the junction box where the trailer wiring comes in. Not sure if that is the case because mine worked with the parking

BEST WAY TO GET POWER TO BACKUP CAMERA



While every backup camera installation varies depending on the application, display style, and camera mounting location, installing a backup camera is relatively time-consuming and labor-intensive. As a result, it's best to set aside at least a full day for disassembly, installation, reassembly, and potential problem-solving. Installing a



A rear-view or backup camera is a great way to enhance the safety in your 2007-up Wrangler, but Jeeps are different from most vehicles and present some mounting challenges. Best backup cameras for 2024. In an actual listening room, you'd find that some speakers play louder than others when fed the same amount of power.



In this comprehensive backup camera wiring guide, we will walk you through the necessary steps to connect your camera to the power supply, display monitor, and reverse light. Whether you're a seasoned DIY enthusiast or just starting ???

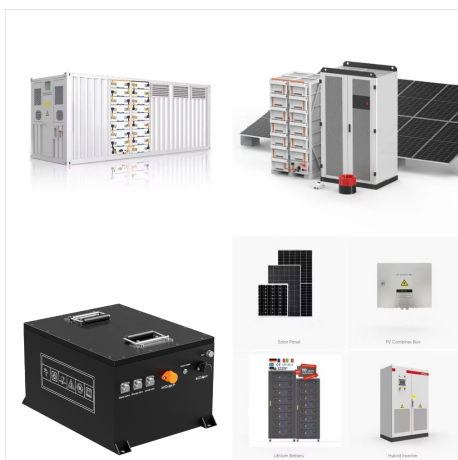
BEST WAY TO GET POWER TO BACKUP CAMERA



1) How to Back Up a Trailer 1.1) Practice How To Back Up a Trailer In a Parking Lot 1.2) Utilize, and Communicate With, a Reliable Spotter 1.3) Set Your Mirrors Correctly 1.4) Get Out And Look (GOAL) 1.5) Roll Down Your Windows 1.6) Use Your Backup Camera to Back Up a Trailer 1.7) Position Your Hands Correctly On the Steering Wheel 1.8) Take Your Time As You ???

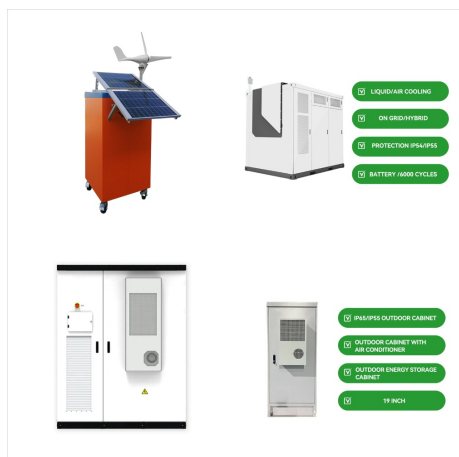


How you do utilize it depends on your vehicle, head unit, and other factors, such as wanting your camera to run continuously or just upon backup. Our expert shows you a few ways to use this



Using a backup camera to back up your vehicle is useful, but many people wonder if there's a way to keep the camera on all the time, regardless of whether or not you're going in reverse. The short answer is yes, this is completely possible, though it will likely require some DIY work, as you will likely need to connect the camera to your

BEST WAY TO GET POWER TO BACKUP CAMERA



Also, check to see where your camera is wired into. The system may require you to turn on your trailer or running lights for the camera to get power. Or not enough power is getting through to the camera. Furrion Vision s Not Pairing. The instructions in the previous section are the same for this model.



Not sure why but that is the way to get it to work. Took us a while to figure it out too!! 02-04-2018, 03:17 PM #7: TGR. Senior Member . Join Date: Apr 2014 I have the Furrion backup camera and it get's the power from the running lights on the trailer which are triggered by the tow vehicle's running lights on position. I hope that helps.



How to Install a Wireless Backup Camera Without Drilling Holes on a Fiberglass RV Looking for a way to install a backup camera yourself without difficulty? You've come to the right place. cut the camera DC power cable to a length that you needed ???

BEST WAY TO GET POWER TO BACKUP CAMERA



This is where you get power and the Reverse signal for the camera. It is called the MBEC and is located just to the left of the gas pedal. Pull the cover off to expose the wiring under it. View attachment 2 Disregard my wiring and markings on the photo.



Step 4: Connect power to the camera by attaching the red wire to 12 volt power and the black to ground. Power to the camera is usually drawn directly at the reverse tail light. With video sense systems, anytime there is ???



This article assumes that you have already purchased and placed your backup camera capable head unit into your car. Read on for information regarding the installation of the camera and running the wiring from the back of the car to the head unit. Step 1 ??? Install the exterior camera. This step concerns the licence plate mounted camera.