

How to store lithium ion batteries safely?

1. Storing Lithium Ion Batteries at The Right Temperature. The typical lithium ion battery storage temperature range of a home or storage unit is usually storing lithium batteries safely. The range of safe storage temperatures is wide, as shown in the chart below. However, issues like decreased battery lifespan occur in extreme weather conditions.

Can lithium batteries be stored at full charge?

Lithium batteries should not be stored at full charge or completely discharged. For long-term storage, it is recommended to store them at a charge level between 40% and 60%. This level helps minimize self-discharge without putting excessive strain on the battery. It is crucial to check the voltage of lithium batteries before storage.

How to store lithium ion batteries in winter?

Adequate charge before storage: Before storing lithium-ion batteries for the winter, ensure they are adequately charged (between 40% and 80%) to minimize the impact of self-discharge. Avoid full charge (100%): Keeping a battery fully charged during long storage can stress the cells and reduce their lifespan.

Should lithium batteries be stored in a dry environment?

It is advisable to store lithium batteries in a dry environment to prevent any moisture-related issues. To minimize the risk of fire, it is important to store lithium batteries away from flammable materials such as gasoline, aerosol cans, or chemicals.

Can lithium batteries be stored in metal containers?

Metal containers can pose a risk of short circuits if the batteries come into contact with the container's walls. When storing lithium batteries, it is important to keep them away from metal objects such as coins, keys, or other batteries.

Should lithium batteries be stored away from flammable materials?

To minimize the risk of fire, it is important to store lithium batteries away from flammable materials such as gasoline, aerosol cans, or chemicals. In the event of a battery failure, the presence of flammable materials

# BEST WAY TO STORE A LITHIUM BATTERY PALAU



could exacerbate the situation. 2. Battery Preparation for Storage



You want to store your lithium batteries in a cool, dry place where the temperature stays around 50°F (10°C), if possible. This helps minimize self-discharge and maintains the energy density, so your batteries are ready ???



Lithium batteries should be kept at around 40-50% State of Charge (SoC) to be ready for immediate use ??? this is approximately 3.8 Volts per cell ??? while tests have suggested that if this battery type is kept fully charged ???



How should I store a lithium battery? To store a lithium battery properly, follow these guidelines: Avoid storing the battery in extreme temperatures. Keep it in a dry and cool place. Store the battery in a partially charged state. Aim for around 40% to 50% charge.

# BEST WAY TO STORE A LITHIUM BATTERY PALAU



6%? Manufacturer instructions: Always refer to the manufacturer's instructions on the best/safest way to store batteries and adhere to their guidance.  
Storage Temperature Range: Batteries should be stored in a cool, ???



There are multiple ways to store a lithium battery, including creating an ideal environment, employing safe handling practices, monitoring charge levels, etc. Taking into account the storage measures based on the intended application (daily use or factory purpose) can ensure better battery lifespan and effective handling and solve concerns

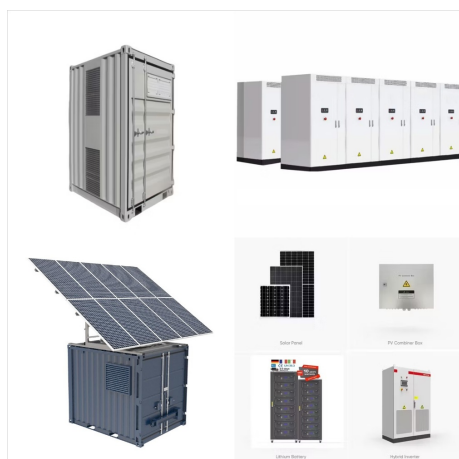


The warehouse for storing lithium battery cells and lithium battery packs should be set up independently. The storage area should have a conspicuous "No Fireworks" sign. Piling up combustibles and flammable items around is strictly prohibited.

# BEST WAY TO STORE A LITHIUM BATTERY PALAU



Lithium batteries should be kept at around 40-50% State of Charge (SoC) to be ready for immediate use ??? this is approximately 3.8 Volts per cell ??? while tests have suggested that if this battery type is kept fully charged the recoverable capacity is reduced over time.



How To Store Lithium-Ion Batteries When Not In Use? 16 Best Ways To Store Lithium Ion Power Tool Batteries. Charge Level Considerations; Temperature And Environment; Use Original Packaging Or Cases; Regular ???



The warehouse for storing lithium battery cells and lithium battery packs should be set up independently. The storage area should have a conspicuous "No Fireworks" sign. Piling up combustibles and flammable items ???



# BEST WAY TO STORE A LITHIUM BATTERY PALAU



You want to store your lithium batteries in a cool, dry place where the temperature stays around 50°F (10°C), if possible. This helps minimize self-discharge and maintains the energy density, so your batteries are ready to roll when you need them.



By choosing a suitable storage location, preparing the batteries correctly, using appropriate storage containers, and performing regular inspection and maintenance, you can effectively store lithium batteries without compromising their performance or ???



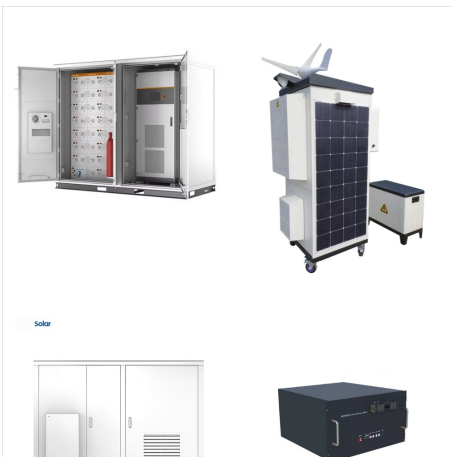
How To Store Lithium-Ion Batteries When Not In Use? 16 Best Ways To Store Lithium Ion Power Tool Batteries. Charge Level Considerations; Temperature And Environment; Use Original Packaging Or Cases; Regular Check-Ups; Avoid Deep Discharge; Use Manufacturer-Approved Chargers; Avoid Physical Damage; Is It Safe To Store Lithium ???

# BEST WAY TO STORE A LITHIUM BATTERY PALAU



Manufacturer instructions: Always refer to the manufacturer's instructions on the best/safest way to store batteries and adhere to their guidance.

Storage Temperature Range: Batteries should be stored in a cool, dry place, ideally at room temperature. Extreme temperatures???i.e., low temperatures below -13° F (-25° C) or high temperatures



This guide on how to store lithium batteries covers essential techniques for both home and travel scenarios. You'll learn about optimal temperature conditions, ideal charge levels, and suitable storage containers. With these tips, you'll extend the longevity of your batteries and prevent potential risks. How to safely store lithium batteries?