

Remove Friend is a temporary option: it's easy to undo and they can still message you. Block is more permanent. This option will remove them from your Best Friends list, and the app overall. That user will no longer be able to see your Snap Score, so they may presume that they've been removed or figure out that they've been blocked on Snapchat.. Stop Chatting ???



2. Check for Mutual Friends Tag. Another way to look for people connected with your Snapchat friends is to check the Mutual Friends tag. When a user is already friends with someone you're connected to on the app, you should see a Mutual Friends tag under their name. This tag will also show a number to indicate how many friends you both have in common.



If you want someone to disappear from your best friends, decrease your level of interaction with them. Another way to clear someone from the best friends list is to block them on Snapchat and then unblock them. To add someone to your best friends, send them snaps and encourage them to send more back to you.



Pin #1 Best Friend. As a Snapchat+ subscriber, you can privately pin your BFF as your #1 Best Friend, making it faster and easier to stay in touch.. From Chat or the Send To screen, press and hold on your friend, then tap "Pin as your #1 Best Friend." Please Note: You can only pin one #1 Best Friend at a time, and only you can see who you pinned.



Step 2: Choose the best friend you want to remove from your contacts by tapping their Bitmoji.. You will be taken to their Snapchat profile. Step 3: Tap on the three-horizontal icon in the top



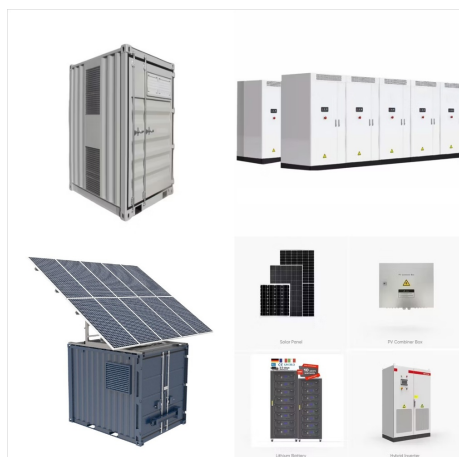
Once someone is on your best friends list, you cannot edit the list ??? add or remove someone from it manually. However, you can remove this person from your friends list altogether by unfriending them on Snapchat. You can also use the extreme measure of blocking them on Snapchat temporarily. Once you unblock them, they won't be on your best



Ghost Trails: See where your friends have been in the past 24 hours on the Snap Map, provided they have location sharing enabled. Best Friends Forever (BFF): Pin your number one best friend to the top of your chat history, making it easier to keep track of their snaps and messages.



That's an indication that the person is your number 1 best friend. You can have up to eight best friends. For the rest of them, you will see a smiling face next to their name. Relationship Tracking: They help users keep track of their interactions and relationships, indicating best friends, shared friends, and snap streaks.



Friendship Profile (Snapchat Plus only) If you are a Snapchat Plus subscriber, there is an alternative way to see your best friends list. When you visit Friendship Profile, you will see a Best Friends or Friends badge with a gold ring. "Best Friends" means that you're one of each other's eight closest friends, and "Friends" means that you're one of their eight most ???



I'm a snap plus user and can see the extended list. I open up snap today and my Bf who was 14 on my list has all a sudden jumped to 6th? Is this a glitch or has snap changed how they calculate best friends cus me and my bf never snap each other only blue message. Whilst my irl best friend who I video snap constantly has been moved down



???? Grimacing Face ??? Your #1 best friend is their #1 best friend. You send the most snaps to the same person that they do. Awkward. ??? Smirking Face ??? You are one of their best friends???but they are not a best friend of yours. You don't send them many snaps, but they send you a lot of snaps. ??? Smiling Face ??? Another best friend



Snapchat considers a "Best Friend" to be someone to whom you send the most amount of snaps. You can have up to eight Best Friends in your contact list. Friend emoji denote the status of your relationship with a friend (which to Snapchat, means variations on the amount of snaps you send to one another). Here's what the default friend emoji mean



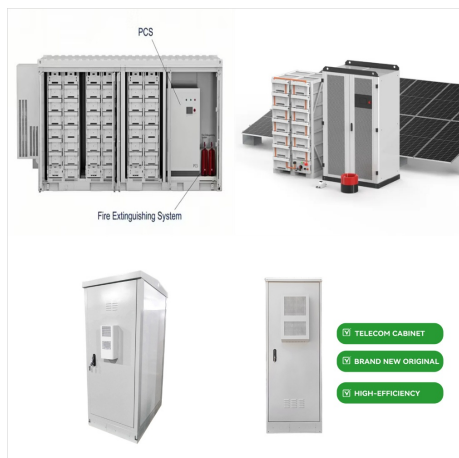
It is one of the ways to see your best friends list on Snapchat. Your top eight friends on Snapchat are assigned a planet based on how close you both are, with Mercury being the closest and Neptune being the farthest away. You can have 8 best friends on Snapchat and the friends you snap and chat with the most are the friends you see as planets.



The first Snapchat Planet on the list is Mercury, and it represents the person you share the most streaks with, i.e. your best friend on Snapchat. This process works for your next eight best friends on Snapchat, meaning your top eight best friends are assigned a planet based on how close you are to them (how much you interact with them).



In order for the snap to be counted toward the Best Friends list score, your friend must open your snap. While they may end up on your Best Friends list, they must also reciprocate the activity for the status to be mutual. Advertisement. Part 3. Part 3 of 3: Chatting with Your Friend.



For example, it was relatively simple to determine a best friend on Snapchat in 2017 because all you had to do was snap with a friend for a few days, and you'd be best friends. For example, the best friend list on Snapchat consists of eight friends. Who Has Access to Your Closest Friends? Before the algorithm update, users could see the



As a Snapchat+ subscriber, you can view up to 16 best friends on your friends list. We'll even tell you which friends have moved up or down on your list since you last checked ?????. To check out your extended Best Friends List, go to your Profile, tap your Snapchat+ membership card, then tap "Extended Best Friends List."



Final Thoughts on Snapchat Best Friends Order. The Snapchat Best Friends Order: Algorithm for Friend Rankings is designed to create a fun and engaging way to keep track of your interactions on the app. By understanding how it works, you can better manage your in-app relationships and maintain your streaks with ease.



Snap Map: If a friend has shared their location with you on Snap Map, you can see their Bitmoji. However, this doesn't indicate Best Friend status but can give you a clue about the closeness of your relationship. Ask Directly: If in doubt, the most straightforward method is to ask them directly if you are on their Best Friends list.