

About this item . Briefcase-style Solar Charger:
BigBlue foldable 100-watt solar panel is typically made with a pair of 50-watt panels. The net weight is only 16.9 lb; you can fold it down to a small and compact briefcase form so that it would be easier for transportation and handling in the wild.(Please make sure there is plenty of sunshine while use)



Among the world's famous renewable energy solution providers since 2007 - Explore BigBlue's most reliable and high-performance energy storage systems, portable power stations, solar panels, and solar chargers for your home grid & off-grid lifestyle.



FlexSolar 40W Solar Panel, USB-C(PD2.0),USB-A (QC3.0) Portable Foldable USB Solar Charger, Power Emergency IP67 Waterproof Camping Hiking Backpacking Outdoor for Phones Power Banks Tablets Ecosonique 10/20/30W Portable Solar Panel Charger, Dual Ports(USB A/USB C) with Detachable Power Hub, ETFE IP67 Waterproof Ultra-light Mobile Phone Solar



The SolarPowa solar charger series (SolarPowa 36, SolarPowa 28, SolarPowa 14) continues to harness power for your road trip, sailing adventure, beach gateway, or camping trip with an energy conversion of up to 24% into free energy under enough sunlight; while most solar chargers in the market are merely 15% efficient.



The SolarPowa solar charger series (SolarPowa 36, SolarPowa 28, SolarPowa 14) continues to harness power for your road trip, sailing adventure, beach gateway, or camping trip with an energy conversion of up to 24% into free energy under enough sunlight; while most solar chargers in the market are merely 15% efficient.



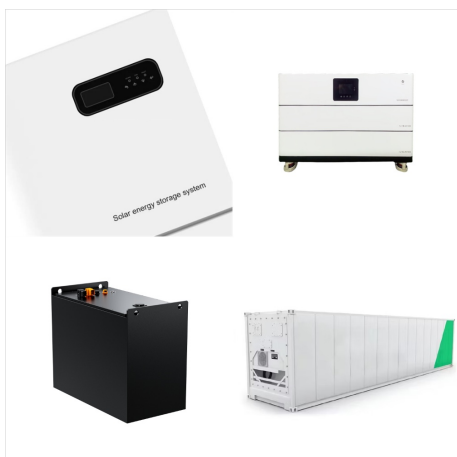
W Portable Solar Panel for Power Station, 24V Foldable Solar Charger with Adjustable Kickstand & MC-4 Connector, Waterproof IP67 for Outdoor Camping RV Off Grid System. 195 4.8 out of 5 Stars. 195 reviews. Available for 3+ day shipping 3+ day shipping. Add. About this item.



Amazon : 296Wh Portable Power Station, BigBlue [PD 100W Type-C] 80000mAh Solar Generator with MPPT, 4 Pure Sine Wave AC/4 DC/4 USB Ports, Fast Charge, CPAP Backup Battery with 18W Flashlight for Camping : Patio, Lawn & Garden



Ecosonique 30W Portable Solar Panel with Detachable Power Hub, 19V DC/USB-A QC 3.0 / USB C ETFE Solar Panel Charger IP67 Waterproof Compatible with Cell Phone, Tablet, Camera, Power Station [Upgraded Tiny Solar Charger] BigBlue 14W SunPower Solar Panels with USB-A Port(5V/2.4A Max), IPX4 Waterproof, Portable Solar Phone Charger Compatible with



As ever, BigBlue has adapted the exalted electrical vehicle grade lithium iron phosphate (LiFePO₄) battery. Compared to the most market-found ternary portable power stations, which use lithium-ion or lead acid; the CellPowa 1000's LiFePO₄ portable power station is safer as better stability at high temperatures and has a longer life span (at least 4 to 5 times longer), ???



As ever, BigBlue has adapted the exalted electrical vehicle grade lithium iron phosphate (LiFePO₄) battery. Compared to the most market-found ternary portable power stations, which use lithium-ion or lead acid; the CellPowa 600's LiFePO₄ portable power station is safer as better stability at high temperatures and has a longer life span (at least 4 to 5 times longer), ???



The BigBlue SolarPowa 100 ETFE is the best value for a 100-watt solar panel we tested. It charges devices nearly as fast as the highest-performing, more expensive panels. This panel keeps putting out power in full sun and on overcast days.



Cover the Earth with Solar Panels Bi-Flex - Bi-Facial Flexible Solar Panel SolarPowa - Portable ETFE Solar Panel BigBlue Bi-Flex Bi-Facial Flexible Solar Panel Series With a remarkable 34cm bending diameter, the Bi-Facial Flexible Solar Panel seamlessly integrates into your lifestyle, making it the ideal companion for



When we used a 10,000mAh Anker power bank to better judge the consistency of the X-Dragon's output voltage, the X-Dragon beat every other model, apart from the Goal Zero Nomad 50, maintaining a



When we used a 10,000mAh Anker power bank to better judge the consistency of the X-Dragon's output voltage, the X-Dragon beat every other model, apart from the Goal Zero Nomad 50, maintaining a



The Cellpowa500 power station and Solarpowa100 solar panel make a great kit that can be easily used for off-grid power. The solar panel is average in terms of power output, but the power station is long-lasting due to its LiFePO4 battery. Overall, this kit is a good value for the price.



Big Blue 28W USB Solar Charger : Best Overall Solar Charger Read why: \$70: 1 pound, 5 ounces: Yes: 28W: USB, 5V up to 2A (28W max) No: 2, 2.4 Amp USB-A Ports: The Big Blue offered the highest power output among these three, and its cost is essentially the same as the Nekteck, so The Big Blue edged out the Nekteck as the best solar charger.



As ever, BigBlue has adapted the exalted electrical vehicle grade lithium iron phosphate (LiFePO4) battery. Compared to the most market-found ternary portable power stations, which use lithium-ion or lead acid; the CellPowa ???



This 14W solar charger with amazing design is the most compact solar panel of BigBlue and suitable for camping, hiking, climbing or any outdoor activities. Higher Solar Conversion: Highly efficient SunPower solar panel convert up to ???



Key Takeaways. The Big Blue CellPowa 1000's high ??? capacity battery of 1075.2Wh provides reliable and consistent power, essential for outdoor adventures and emergencies, supporting over 3500 cycles.; It features multiple charging options with AC, DC, USB ports including a USB ??? C port for diverse devices along with fast recharging from 0% to 80% in just 1.5 hours using the ???



Among the world's famous renewable energy solution providers since 2007 - Explore BigBlue's most reliable and high-performance energy storage systems, portable power stations, solar panels, and solar chargers for your home grid & off-grid lifestyle.



Quick Charge Solar Generator with Panels
Included: Solarpowa 100 solar panel with 24V/4.16A maximum output charging power is specially designed to adapt BigBlue Cellpowa 600 portable power station. DC output is more stable than other solar panels and provides a fast charge for Cellpowa 600.



BigBlue combines portable power station with solar panels to create mobile solar generator and home backup power supply, making clean and safe energy available everywhere. Big Digest. Big Digest More than you wanted to know about the "blue". Enter your email. Subscribe PRODUCTS PRODUCTS Power Stations; Solar Panels; Solar Chargers; ETFE



???Portable and Highly Efficient Monocrystalline Panels???The highly efficient solar panels can reach a power conversion rate up to 23%, allowing you to charge three devices at once. This is a fantastic product, which performed exactly as advertised. Well done Big Blue, this is a hit! At peak sunshine and sun angle, this solar panel can