

BigBlue 36W solar charger won't mind exposure to damp conditions such as morning dew or light rainfall. It is suitable for a trek, hiking, or camping, are a essential part for many people's go-bags and car kits. Note: the solar panels charger can't store the electricity, you need to connect your device with this solar panels in outdoor



The BigBlue SolarPowa 28 is our top choice for a portable solar charger because it balances portability and solar charging efficiency the best of any solar panel we tested. This model has impressive solar charging abilities ???



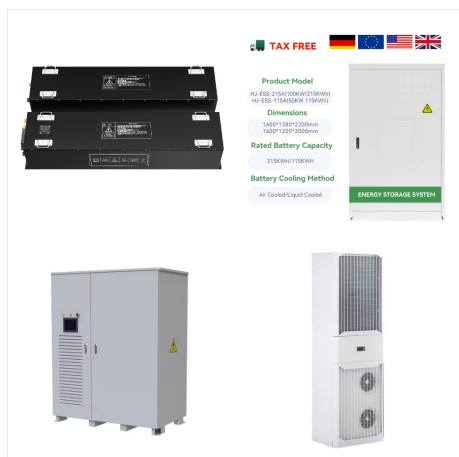
BigBlue Solarpowa 200 is a 200 watt portable solar panel with a high solar energy conversion rate of 23%. Used with CP2500 power station, you don't need to wait for hours on end to have a reliable power source.



Attached a USB cable for almost all 5V Android devices & some DSLRs, or Apple devices (Note: needs extra original cable for Apple devices). Our solar cell phone charger can't store the electricity, please unfold all solar panel in outdoor direct sunlight, then ???



The voltage and current parameters of BigBlue solar panels are optimized to match with the BigBlue portable power stations to maximize their performance. Using this product to recharge the portable power stations of other brands may cause malfunctioning or damage to the product when the parameters do not match. If the parameters match, you can



The SolarPowa solar charger series (SolarPowa 36, SolarPowa 28, SolarPowa 14) continues to harness power for your road trip, sailing adventure, beach gateway, or camping trip with an energy conversion of up to 24% into free ???



Among the world's famous renewable energy solution providers since 2007 - Explore BigBlue's most reliable and high-performance energy storage systems, portable power stations, solar panels, and solar chargers for your home grid & off-grid lifestyle.



Among the world's famous renewable energy solution providers since 2007 - Explore BigBlue's most reliable and high-performance energy storage systems, portable power stations, solar panels, and solar chargers for your home grid & off-grid lifestyle.



Among the world's famous renewable energy solution providers since 2007 - Explore BigBlue's most reliable and high-performance energy storage systems, portable power stations, solar panels, and solar chargers for your home grid & ???



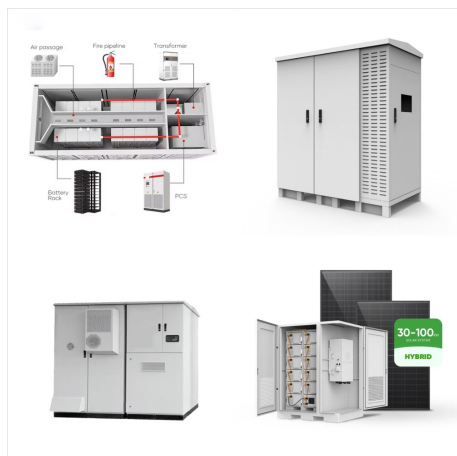
About this item . Briefcase-style Solar Charger:  
BigBlue foldable 100-watt solar panel is typically made with a pair of 50-watt panels. The net weight is only 16.9 lb; you can fold it down to a small and compact briefcase form so that it would be easier for transportation and handling in the wild.(Please make sure there is plenty of sunshine while use)



The SolarPowa solar charger series (SolarPowa 36, SolarPowa 28, SolarPowa 14) continues to harness power for your road trip, sailing adventure, beach gateway, or camping trip with an energy conversion of up to 24% into free energy under enough sunlight; while most solar chargers in the market are merely 15% efficient.



The amount of sunlight, weather, or shady may cause fluctuations in the current output that prevent your devices from charging. In this event, try placing the solar charger in more direct sunlight or wait for the weather to clear. In order to get the maximum solar energy, please adjust the solar charger toward the sun.



Built-in Digital Ammeter: BigBlue 28w solar panel charger can measure current real-time value, which is convenient for your use. Note that the value of actual outputs depends on the sunlight intensity, temperature and connected devices. If your device has a limited input current of 1A, the value of the ammeter will show between 0.7A and 0.9A in



BigBlue ensure 100% safe charging with overcurrent, overheating and short-circuit protection. ???Portable Camping Solar Panel???BigBlue solar charger is a great option if you're taking an extended camping trip or if you're traveling somewhere with an unreliable power grid.



BigBlue ensure 100% safe charging with overcurrent, overheating and short-circuit protection; Higher solar conversion - highly efficient sunpower solar panel converts up to 24% of solar power, while most solar chargers in the market are merely 15% efficient, the 3 usb ports (5v/4.8a max) can power your cellphones, tablets, camping flashlight etc.





The BigBlue SolarPowa 30 is a set of solar panels that can charge an iPhone and other devices. It weighs about a kilogram (2.4 pounds) and when folded, measures 358 by 225 by 43 millimeters (14.09



BigBlue Solar Generator 537.6Wh with Panels, Cellpowa600 Power Station and Solarpowa100 ETFE Solar Panels(24V/4.16A),10ms UPS, 2Hrs Charge to 100%, LFP Battery Backup Kit for Camping, Power Outage . Visit the BigBlue Store. 4.1 4.1 out of 5 stars 22 ratings. \$459.99 \$ 459. 99.



BigBlue 36W solar charger won't mind exposure to damp conditions such as morning dew or light rainfall. It is suitable for a trek, hiking, or camping, are a essential part for many people's go-bags and car kits. Note: the solar panels ???



Among the world's famous renewable energy solution providers since 2007 - Explore BigBlue's most reliable and high-performance energy storage systems, portable power stations, solar panels, and solar chargers for your home grid & ???



[New Version] BigBlue 20W Solar Panel Charger with USB-A and USB-C Ports, Portable Solar Charger for Camping, Higher Efficiency, IP65 Waterproof, Compatible with Cellphones, Tablets, Power Bank etc. 4.2 out of 5 stars. 36. 50+ bought in past month. \$64.96 \$ 64. 96. 40% off coupon applied Save 40% with coupon.



BigBlue does have a 21W version with one less panel that might be helpful in this case. With a rack and panniers, however, the BigBlue works great. I carried it horizontally across the top of my rear panniers, like this, for a month in Central Asia:



The new SolarPowa ETFE - Solar Charger series; consisting of SolarPowa 30, 20, and 10, is faithful to the original blueprint as one of the most superior fast-charging clean energy of alltime, whilst making full use of modern technologies to elevate its performance to an entirely different level in adapting to your adve



Other than that, we found that it was remarkably, if not eerily, similar to two other top-rated solar chargers we evaluated. All three (the Anker 21 Watt PowerPort Solar charger, the Nekteck 28 Watt solar charger, and the BigBlue 28W USB Solar Charger) use the same basic design with two USB-ports and a light to indicate that they're getting a charge; the Big Blue's ???



BigBlue has built a world-class reputation for renewable and sustainable energy solutions since the company's formation in 2007, BigBlue has launched internationally recognized photovoltaics in addition to solar panels, not to mention a diverse range of highly targeted consumer and professionally installed energy storage systems.





Among the world's famous renewable energy solution providers since 2007 - Explore BigBlue's most reliable and high-performance energy storage systems, portable power stations, solar panels, and solar chargers for your home grid & off-grid lifestyle.



The BigBlue SolarPowa 28 is our top choice for a portable solar charger because it balances portability and solar charging efficiency the best of any solar panel we tested. This model has impressive solar charging abilities in both direct sunlight and during cloudy days. And it weighs less than all but the smallest 5-watt panels.



The BigBlue SolarPowa 30 is a set of solar panels that can charge an iPhone and other devices. It weighs about a kilogram (2.4 pounds) and when folded, measures 358 by 225 by 43 millimeters (14.09