

Does the Marshall Islands have solar energy?

as been made to develop renewable energy for the Marshall Islands. Almost all households on the outer islands, previously without electricity supply, now have solar home systems, and several larger solar

What is Island Eco?

Island Eco is a social entrepreneurship that has been doing business and implementing projects in rural electrification and renewable energy in the Marshall Islands since 2001. Income levels are low and communities are extremely remote, with small populations, long distances between each atoll, and unreliable transportation.

How many atolls are there in the Marshall Islands?

The Marshall Islands consists of 29 atolls. Income levels are low and communities are extremely remote, with small populations, long distances between each atoll, and unreliable transportation. The Marshall Islands consists of 29 atolls and 5 islands, the majority of which are not electrified, have an unreliable energy source, and pay very high fuel costs.

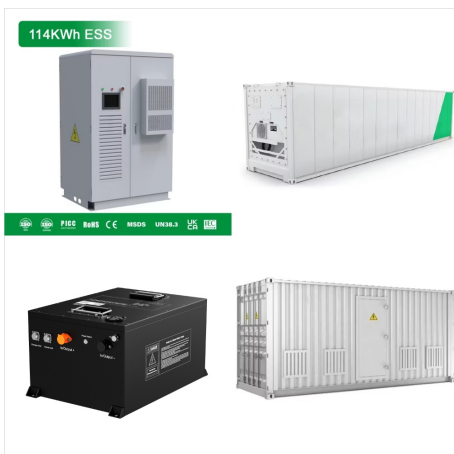


"This solar project will bring significant improvement in the lives of local people of Marshall Islands," said Falahud Din Shams, chairman of Humanity First Marshall Islands, at the launch event Monday at Marshall Islands Resort. Shams underlined the point that all of the grant funding is going for the solar systems installation and training.





Ease of doing Solar classification Progressive  
Cumulative Solar Capacity in MW (2021) 1.6  
Human Development Index (2021) 0.6 Marshall  
islands Electricity Consumption in kWh/capita  
(2020) Not available Getting Electricity Score (2020)  
59.4 Asia & Pacific Average PVout in kWh/ kWp/day  
(2020) NDC Target by 2030 in % (base year 2010)  
40.0



Q23: Based on the predictions in the above graphic,  
what is the prognosis for the Marshall Islands and  
other low-lying islands and coastal areas by the end  
of the century? \_\_\_\_\_ Section 8: Projected Changes  
to Biomes. Biomes, which are formations of flora  
and fauna that have common characteristics, are  
controlled by the climate of a region.



Solar Hybrid System Project in Marshall Islands  
Time 2020 Project overview The Republic of the  
Marshall Islands is an island country located in the  
Mid-Pacific Micronesia region. It consists of 29 atoll  
island groups and five small islands ???



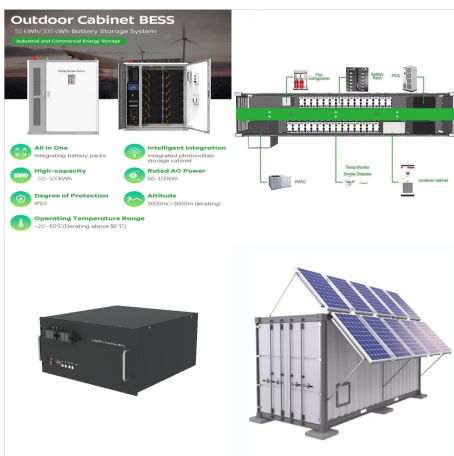
# BIOME SOLAR MARSHALL ISLANDS



Under the National Energy Policy and to address the challenges associated with fossil fuel dependence, the Marshall Islands implemented its outer island solar project, setting a target of 100% renewable energy electrification. The project resulted in 95% solar electrification of all outer island public facilities and households and, building on that success, the Marshall Islands has ???



The Marshall Islands' World Bank-funded renewable energy project is the first step toward energy security and sustainability. The Implementation of The Marshall Islands' renewable energy project carried out by SINOSOAR, under ???



The islands module for the Biomes! mods. Requires Biomes! Core loaded before it. Features. Known Issues. Known Mod Conflicts. About. The islands module for the Biomes! mods Resources. Readme License. View license Activity. Custom properties. Stars. 3 stars. Watchers. 3 watching. Forks. 2 forks. Report repository



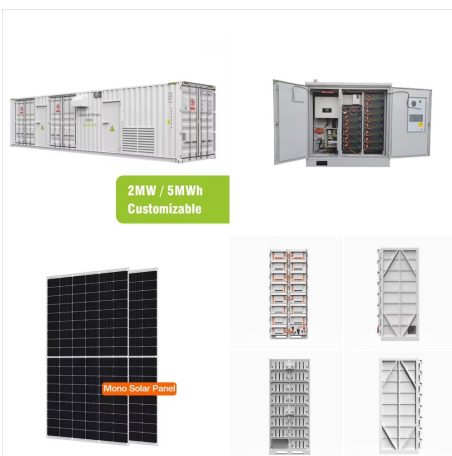
# BIOME SOLAR MARSHALL ISLANDS



The Marshall Islands archipelago consists of 29 atolls and five isolated reef islands with a combined total of 1,136 low reef islets, 174 km<sup>2</sup> of land areas, 13,000 km<sup>2</sup> of lagoon areas, and 2,600 km of reef circumferences. As a whole, the Marshall Islands are located in Micronesia, situated at the east of the Mariana Islands, northeast of the Caroline Islands, and northwest of ???



The land area of Marshall Islands is made up of the carbonate remains of coral reef plants and animals and include sands, gravel, cobbles, boulders, consolidated limestone debris, and beachrock. The soil is very thin and of poor quality. Nevertheless, many plants grow on the island and provide food, materials for houses and transportation, food



le Groupe BIOME (Biome solar industry "BSI", Kollektor Biome Beja "KBB", Biome Inox industry "B2I") a re?u une visite de la part de l'organisme de certification DIN CERTCO pour auditer toute sa gamme de produit. selon les exigences des r?gles du SOLAR KEYMARK : certification europ?enne de qualit? qui confirme et atteste la conformit? des ???



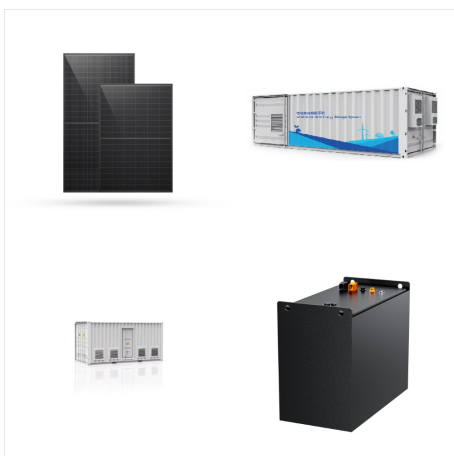
# BIOME SOLAR MARSHALL ISLANDS



The Marshall Islands, situated in the central Pacific Ocean, comprise a collection of atolls and islands dispersed across an extensive area. The climate of the Marshall Islands is characterised as tropical, with consistently warm temperatures and elevated humidity levels throughout the year. The archipelago is divided into distinct climate zones, each exhibiting its ???



FACT FILE. Population RMI Census 2021: 9,789 (5,096 males, 4,693 females) Number of islets: 97 Land area: 6.33 square miles Lagoon area: 839.3 square miles Yacht permit fee: \$25 (Need a sponsor on Kwajalein Kwajalein) Mayor: Hirata Kabua Members of Parliament: David Paul, Kili Kabua, Kitlang Kabua Kwajalein is the world's largest atoll, which presumably helped to make ???



Biome Solar Industry << BSI >> est une entreprise tunisienne sp?cialis?e dans la conception, la production et l'approvisionnement de produits solaires int?grant le meilleur de la technologie en mati??re de capteurs thermiques con?us par notre partenaire allemand KBB. Tous nos chauffe-eau solaires commercialis?s pr?sentent les performances thermiques et m?caniques exig?es ???



# BIOME SOLAR MARSHALL ISLANDS



The Marshall Islands (Marshallese: Ṃ̧ḡḷḡḷḡ?, [ʃ]) officially the Republic of the Marshall Islands (Marshallese: Aolepḡḡn Aorḡḡkin Ṃ̧ḡḷḡḷḡ?, [note 1]) is an island country west of the International Date Line and north of the equator in the Micronesia region of the Northwestern Pacific Ocean.. The territory consists of 29 coral atolls and five main islands as well as 1,220 other very small



Marshall Islands : Business Details Battery Storage  
Yes Installation size Smaller Installations Operating  
Area Marshall Islands ENF Solar is a definitive  
directory of solar companies and products.  
Information is checked, categorised and ???



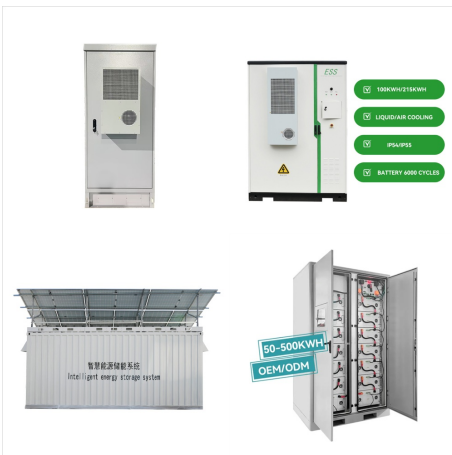
Biome Solar Industry << BSI >> est une entreprise tunisienne spécialisée dans la conception, la production et l'approvisionnement de produits solaires intégrant le meilleur de la technologie en matière de capteurs thermiques conçus par notre partenaire allemand KBB. Tous nos chauffe-eau solaires commercialisés présentent les performances thermiques et mécaniques exigées.



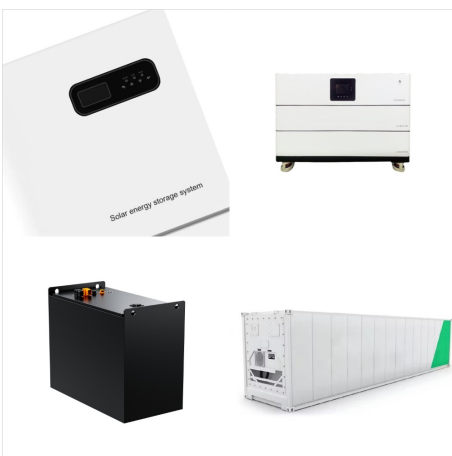
# BIOME SOLAR MARSHALL ISLANDS



Biome Solar Industry << BSI >> fabrique, commercialise et installe des chauffe-eau solaires, sur tout le territoire tunisien ainsi qu'au niveau international grâce à différents partenaires. Certifiée ISO9001, l'entreprise est également en cours de certification 14001 pour la mise en place de systèmes de management de l'environnement et OHSAS 18001 pour la sécurité et la santé au



Biome Solar Industry (BSI), une entreprise tunisienne de renom, se distingue par son expertise dans la conception, la production et l'approvisionnement de produits solaires de pointe. En tant que groupe spécialisé dans la production de systèmes thermiques solaires, basé en Tunisie, nos quatre entreprises industrielles - BSI, KBB, B2I et ETI



Summary: Most regions (24) in Marshall Islands lie in the Tropical rainforest climate zone (Köppen: Af). The mean average of annual temperatures range from a high of 28.41°C (83.14°F) in Jaluit to a low of 27.8°C (82.04°F) in Utrik.





The Marshall Islands consists of 29 coral atolls, making it one of only four atoll nations in the world (United Nations, n.d.). 1225 small islands in the North Pacific Ocean make up the nation, and it is home to 870 reef systems (United Nations, n.d). It is hot and humid in this area and has an average temperature of 81 degrees. Although the islands border a typhoon ???



Below is the average daily output per kW of Solar PV installed for each season, along with the ideal solar panel tilt angles calculated for various locations in Marshall Islands. Click on any location for more detailed information. Explore the solar photovoltaic (PV) potential across 2 locations in Marshall Islands, from Airok to Majuro.



The Marshall Islands, officially known as the Republic of the Marshall Islands, is a sprawling chain of atolls and islands in the central Pacific Ocean, situate. BioDB NCI 2024. Groups. Mammals Birds Amphibians Reptiles Myxini





Ideally tilt fixed solar panels 7° South in Majuro, Marshall Islands. To maximize your solar PV system's energy output in Majuro, Marshall Islands (Lat/Long 7.091, 171.3765) throughout the year, you should tilt your panels at an angle ???



The Biomes/Weather/Time system is comprised of a pack of unique events that visually apply to the map, and affect the chance of obtaining exclusive auras for that biome. The system operates similarly to the rolling system used by players to acquire auras, but instead, it is rolled every second. For instance, if the Starfall biome has a 1 in 7,500 chance of appearing, then every ???



Marshall Islands : Business Details Battery Storage  
Yes Installation size Smaller Installations Operating  
Area Marshall Islands ENF Solar is a definitive  
directory of solar companies and products.  
Information is checked, categorised and connected.





Quality, Logistics and Purchasing Manager chez  
Biome Solar Industry ? ?????(R)?????(C): Biome  
Solar Industry ? ??????????????: FSEGJ ?  
?????????????: ??????????(C) ?????????(C) ? 185  
????????? ?????? LinkedIn. ?????? ??????  
Mohamed ZARROUK ?????????(R)?u?? ??????  
LinkedIn?? ?????? ?????????????? ???-?????????????  
?????? ?????????????? ???????.



Biome Solar Industry (BSI), une entreprise  
tunisienne de renom, se distingue par son expertise  
dans la conception, la production et  
l'approvisionnement de produits solaires de pointe.  
En tant que groupe sp?cialis? dans la production  
???