

What is the closest black hole to the Solar System?

The closest black hole to the solar system ever spotted may be just 1,000 light-years away. This newfound dark neighbor is at least 4.2 times as massive as the sun, and lives with two ordinary stars whose funny orbits gave the black hole's presence away, astronomers report May 6 in *Astronomy & Astrophysics*.

Is there a black hole near Earth?

A black hole weighing as much as 33 suns lurks a mere 2,000 light-years away from our solar system. Artist's impression of the system with the most massive stellar black hole in our galaxy. The Milky Way has a big newfound black hole, and it lurks close to Earth!

Is there a black hole in the Milky Way?

Just 1,924 light-years from the Solar System, in the constellation of Aquila, astronomers have just discovered a black hole. And it's not just any black hole. Named Gaia BH3, or BH3, the object is the most massive stellar-mass black hole we've ever spotted in the Milky Way, clocking in at a hefty 33 times the mass of the Sun.

How close is a black hole to the Sun?

The newly discovered black hole is about 1,011 light-years from our solar system in the star system HR 6819. Unveiled today in *Astronomy & Astrophysics*, the invisible object is locked in an orbit with two visible stars. It's estimated to be about four times the mass of the sun and roughly 2,500 light-years closer than the next black hole.

Can astronomers find a black hole in your backyard?

You never really know what you might find hiding in your own backyard, especially if those things are particularly adept at escaping detection. Just 1,924 light-years from the Solar System, in the constellation of Aquila, astronomers have just discovered a black hole. And it's not just any black hole.

Which system has the most massive black hole in our galaxy?

Artist's impression of the system with the most massive stellar black hole in our galaxy. The Milky Way has a big newfound black hole, and it lurks close to Earth! This sleeping giant was discovered with the European space telescope Gaia, which tracks the motion of billions of stars in our galaxy.

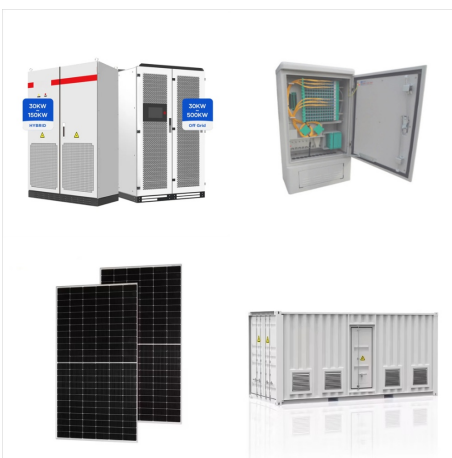
BLACK HOLE NEAR SOLAR SYSTEM



The dormant black hole, dubbed Gaia BH1, sits 1,600 light-years away ??? three times closer than the last black hole to hold the record. "Take the Solar System, put a black hole where the Sun



Anatomy of a Black Hole Event Horizon This is what makes a black hole black. We can think of the event horizon as the black hole's surface. Inside this boundary, the velocity needed to escape the black hole exceeds the speed of light, which is as fast as anything can go. So whatever passes into [???



The Milky Way has a big newfound black hole, and it lurks close to Earth! This sleeping giant was discovered with the European space telescope Gaia, which tracks the motion of billions of stars

BLACK HOLE NEAR SOLAR SYSTEM



The new work suggests our solar system is located 25,800 light-years from Sagittarius A* (abbreviated Sag A* and pronounced Sag A-Star), the region of our Milky Way's central black hole.



From a distance, a black hole acts like any massive, gravitational object: Until it's right on top of you, it follows classical mechanics and Newton's law of universal gravitation, which tells us the attraction between two objects is proportional to their masses and drops off rapidly with distance other words, there's no gravitational difference between R136a1, a blue dwarf star ???



Black holes have captured our imaginations for years: the idea of a near-invisible giant vacuum cleaner drifting through space, ready to devour the Earth in one gulp, is enough to keep anyone

BLACK HOLE NEAR SOLAR SYSTEM



Images taken by the Hubble Space Telescope point to an elusive intermediate-size black hole in the star cluster ?? Centauri. (5.43 kiloparsecs) from the Solar System. The images had mostly



Monster black holes at the centers of galaxies can launch particles to near light speed. 08 Gravity's the same. If you replaced the Sun with a black hole of the same mass, the solar system would get a lot colder, but the planets would stay in their orbits. 09 Star booms.



Theorist Avi Loeb of Harvard University often ponders such questions. Last year, he mused on "some fun things you can imagine doing near a black hole," like using its accretion disk to burn trash and produce usable energy, or surfing with light sails on the jets coming from a black hole's poles. Although he says such exercises are useful for

BLACK HOLE NEAR SOLAR SYSTEM



The black hole at the heart of our own galaxy, called Sagittarius A* (pronounced ay-star), boasts the weight of 4.3 million Suns based on long-term tracking of stars in orbit around it. Its shadow diameter spans about half that of Mercury's orbit in our solar system. The animation shows two monster black holes in the galaxy known as NGC 7727



Fortunately, this has never happened to anyone ??? black holes are too far away to pull in any matter from our solar system. Hawking showed that if a pair of such particles is created near a black hole, there is a chance that one ???



An asteroid-mass primordial black hole flying near a planet could perturb the planet's orbit by a detectable amount. Journals. Physical Review Letters; Physical Review X; PRX Energy; PRX Quantum The Solar System as a Black Hole Detector. September 17, 2024 & bullet; Physics 17, s98.

BLACK HOLE NEAR SOLAR SYSTEM



This animation shows a Sun-like star orbiting Gaia BH1, the closest black hole to Earth, located about 1600 light-years away. Observations by Gemini North, one of the twin telescopes of the International Gemini Observatory, operated by NSF's NOIRLab, were crucial to constraining the orbital motion and hence masses of the two components in the binary system, ???



The black hole in the triple system HR 6819 is just 1000 light-years from Earth. 6 May 2020; indicated a black hole companion of about 3.5 solar masses. Studying systems such as this and HR 6819 will help astronomers "understand how binaries work and how black holes form," Thompson says. The new find "is very close and bright," he says.



A black hole is an astronomical object with a gravitational pull so strong that nothing, not even light, can escape it. Its event horizon extends so far it could encompass much of our solar system out to well beyond the planets. forming jets of particles moving near the speed of light that emit radio, X-rays and gamma rays.

BLACK HOLE NEAR SOLAR SYSTEM



The newly discovered black hole is about 1,011 light-years from our solar system in the star system HR 6819. Unveiled today in Astronomy & Astrophysics, the invisible object is locked in an orbit



The black hole would have been a gravitationally captured object, pre-existing the formation of our Solar System. Its capture and orbit might have contributed to bizarre orbits of various trans-Neptunian objects. The probe could be designed to withstand the extreme environment near the black hole and collect information on its properties



"We're seeing two supermassive black holes, a larger one with 200 million solar masses and a smaller companion weighing half as much," said Jeremy Schnittman, an astrophysicist at NASA's Goddard Space Flight Center in Greenbelt, Maryland, who created the visualization. The rapid motion of gas near the black hole modifies the disk