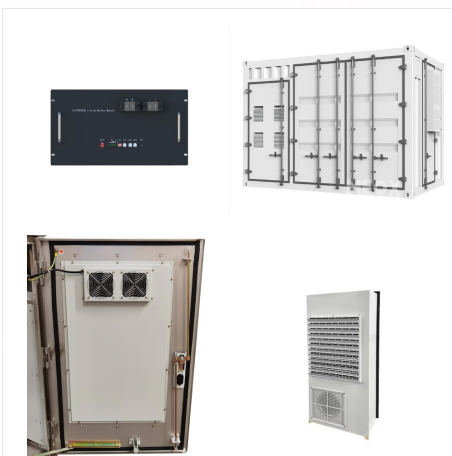




So, these geniuses went to the middle of nowhere, Black Rock Desert, Nevada (yes, the same place where Burning Man is held), to build a scale model of the solar system. Tap to play GIF Via

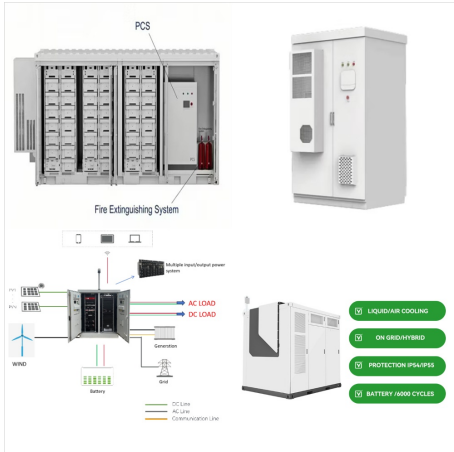


The team used glass spheres lit by LEDs and some GPS calculations to map out the solar system on the dry bed of the Black Rock Desert in Nevada. Once nighttime arrived they shot a timelapse from a nearby mountain that accurately reflects the distance of each orbital path at a scale of roughly 1:847,638,000.



Still from "To Scale: The Solar System," a 7-minute video that shows the construction of a scale-model solar system in Nevada's Black Rock Desert. (Image credit: Wylie Overstreet and Alex Gorosh)

BLACK ROCK DESERT SOLAR SYSTEM MODEL



Scale Model of the Solar System on Desert:
Planetary distances scaled. If you put a 1.5 meter Sun in the center (the actual diameter of the Sun is 1,392,684 km / 865,373.72 mi):. The distance between the Earth and the ???



Filmmakers Wylie Overstreet and Alex Gorosh built the solar system in the Black Rock Desert north of Reno. Over the course of 36 hours, Overstreet, Gorosh and a couple of friends created the solar



The universe, as Douglas Adams so memorably explained, is big. Really big.. But so are the things inside it -- even objects like the Solar System, which on a galactic scale are absolutely minuscule.

BLACK ROCK DESERT SOLAR SYSTEM MODEL



In "To Scale: The Solar System" filmmakers Wylie Overstreet and Alex Gorosh, along with a few of their friends, build a size-accurate model of our cosmic backyard in Nevada's Black Rock Desert



Pointing out how traditional visual depictions of the Solar System get the sense of scale totally wrong, Overstreet and Gorosh are determined to set the record straight, making their own scale model of what the Solar System actually looks like in the middle of a dry lakebed in Nevada's Black Rock Desert.

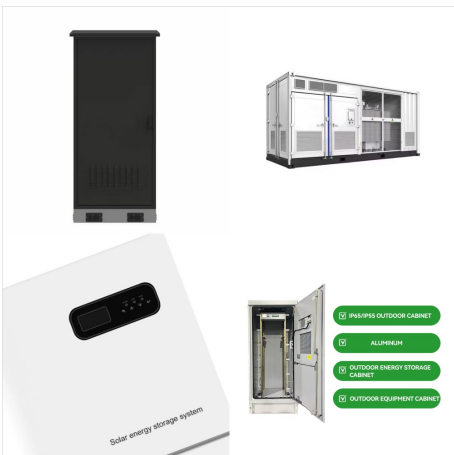


"Black Rock, a prominent topographic feature of the Black Rock Desert in northwest Nevada, was first reported by John C. Fremont who, in 1844, noted the abundance of black fragments, In the Bathonian, this volcanic pile was cut by a conjugate sinistral high-angle wrench fault system as volcanism waned. During the Callovian, sediments of the

BLACK ROCK DESERT SOLAR SYSTEM MODEL



The pair made the calculations using a tool from NASA's Jet Propulsion Laboratory and determined that the Black Rock Desert would be the perfect place to illustrate the expanse of the solar system.

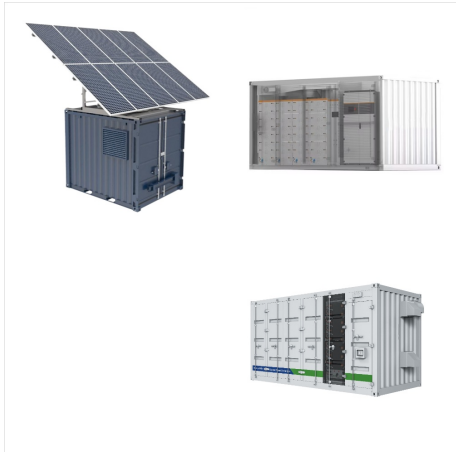


The video does like it says, bringing you through a 7-mile stretch of Black Rock Desert that the duo has repurposed as a scale model of our humble stellar huddle, complete with timelapse footage

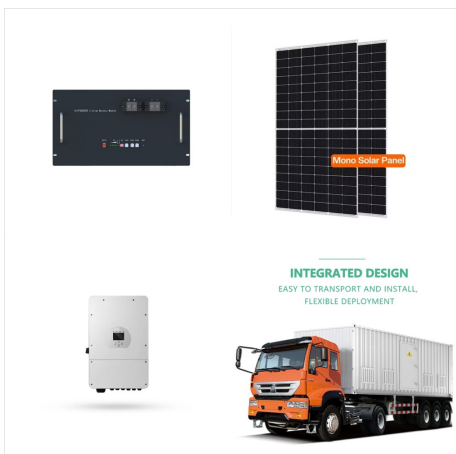


Using a ten-foot chain-link fence hooked to the back of their car, they created the orbits of all eight planets on a dried lake bed in Nevada (Black Rock Desert, home to Burning Man), carving

BLACK ROCK DESERT SOLAR SYSTEM MODEL



Thanks to a group of artists, the Nevada desert is now home to what they claim is the first true-to-scale model of the solar system "complete with planetary orbits." Filmmakers Wylie Overstreet and Alex Gorosh created a scale model of the solar system in Nevada's Black Rock Desert. ()



From filmmakers Wylie Overstreet and Alex Gorosh, who camped for 36 hours on a seven mile stretch of dry lakebed in Black Rock Desert, Nevada, and then traced out the entire solar system based on a blue marble Earth, this is an ???



Cartoon Network and Aardman Animations have released a stop-motion short to celebrate the 10th anniversary of Over the Garden Wall. It features the original voice actors, including Elijah Wood.

BLACK ROCK DESERT SOLAR SYSTEM MODEL



Scale Model of the Solar System on Desert:
Planetary distances scaled. If you put a 1.5 meter Sun in the center (the actual diameter of the Sun is 1,392,684 km / 865,373.72 mi):. The distance between the Earth and the Moon is much bigger than most people think.; Mercury, the closest planet to the Sun would be 68 meters (224 feet) away.



The Sun is the largest object within our solar system, comprising 99.8% of the system's mass. The Sun is located at the center of our solar system, and Earth orbits 93 million miles away from it. Though massive, the Sun still isn't as large as other ???

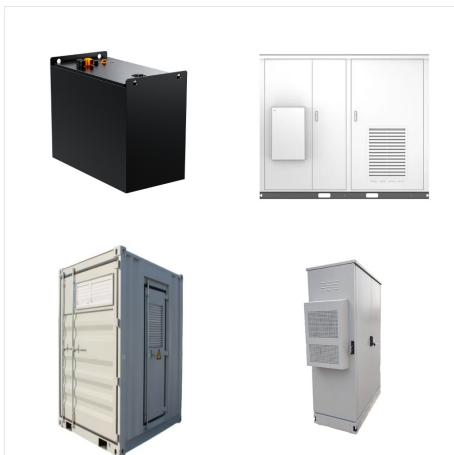


The Tampa Bay Solar System, also called the Florida Solar System, is a scale model of the solar system in the Tampa Bay area and beyond, that anyone can help create! Scale models in classrooms and museums can show the sizes of the planets relative to the Sun and each other, but they cannot show the vast distances between them.

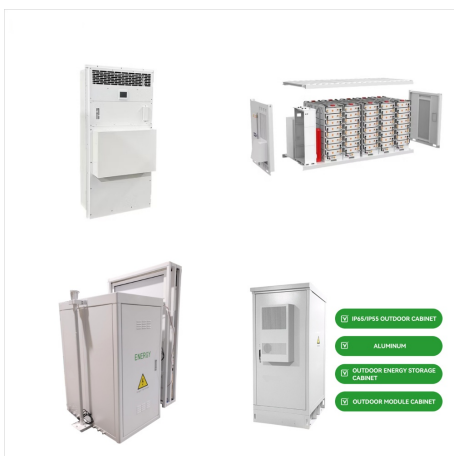
BLACK ROCK DESERT SOLAR SYSTEM MODEL



Planets Transit The Desert In 7-Mile Scale Model Of The Solar System : tracing out the planets" orbits and then filming a time-lapse video from a nearby mountaintop in Nevada's Black Rock Desert.



Even on that seemingly vast scale, earth was just the size of a marble. Our home planet was placed 579 feet (176 m) from the sun; Jupiter was put 0.57 miles (0.92 kilometers) away; and Neptune



If you put the orbits to scale on a piece of paper, the planets become microscopic, and you won't be able to see them. There is literally not an image that adequately shows you what it actually looks like from out there. The only way to see a scale model of the solar system is to build one. Welcome to Black Rock Desert.

BLACK ROCK DESERT SOLAR SYSTEM MODEL



Wylie Overstreet and Alex Gorosh went to the Black Rock Desert, where Burning Man is held each year, and used the dry lakebed to build a full, three dimensional scale model of the Solar System



Latest article about Here's what happened when a group of friends built a scale model of the solar system in the desert on Business Gorosh, and a few friends headed out to Black Rock Desert.



The historic origins of what was to become Black Rock City began with the relocation of the Man's burning from Baker Beach in San Francisco to the Black Rock Desert, Nevada in 1991. Black Rock City 1992. Due to the several hundred mile trip, it was necessary to establish an overnight camp near the Man for the 250 participants who attended.