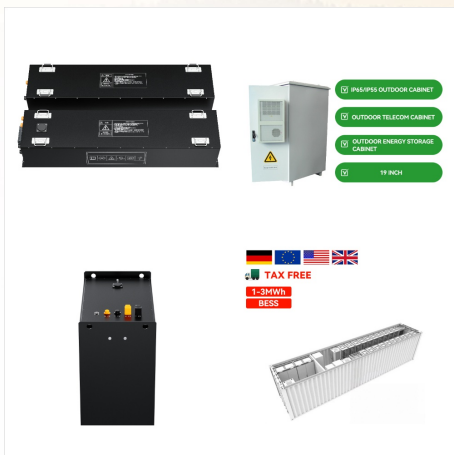




The Power Management System PMS3 is a 230 Volt AC mains and 12 Volt DC power control unit, providing all the necessary features or the control of the electrics in your caravan, campervan, motorhome or horsebox. This PMS3 ???



Shop Electrical - Get Up To 70% Off. Bonus electrical PMS 3H Power Management System (Horizontal) \$ 289.95 Original price was: \$289.95. \$ 88.99 Current price is: CBE 12v Power and Pump Switch for Caravan & Campervan \$ 9.50 Original price was: \$9.50. \$???



Have the Power Management System PMS 3H. However the light fuse has disconnected from the internal chip board. My question is does anybody have any knowledge how to get inside the PMS box for me to solder back the cable that should connect the end of the fuse torpedo containing the fuse. Any comments funny or not would be appreciated. Regards Peter

BONUS ELECTRICAL PMS 3H POWER MANAGEMENT SYSTEM



The PMS3 Power Management System is a 230 Volt AC mains and 12 Volt DC power control unit, providing all the necessary features for the control of the electrics in your caravan, campervan, motorhome or horsebox. This PMS3 unit is designed to work with a battery in the circuit, for optimum performance a good quality leisure battery.



PMS3 Horizontal Power Management System, the Power Management System PMS3 is a 230 Volt AC mains and 12 Volt DC power control unit, providing all the necessary features for the control of the electrics in your caravan, campervan, motorhome or horsebox. This PMS3 unit is designed to work with a battery in the circuit, for optimum performance a good quality leisure battery.



Bonus Electrical PMS 3 and Control Panels for Caravans and Motorhomes, all items sent on a Next Working Day delivery if in stock! Power Management System; LED Lighting; Televisions & Aerials ; Chargers & Inverters; Control Panels; Leisure Batteries; Bonus Electrical CP2 12V Caravan Control Panel A compact 12v unit, the Bonus Electrical

BONUS ELECTRICAL PMS 3H POWER MANAGEMENT SYSTEM



The power management system PMS3 is a 230 Volt AC mains and 12 Volt DC power control unit, providing all the necessary features or the control of the electrics in your caravan, campervan, motorhome and/or horsebox. This unit is designed to work with a battery in the circuit, for optimum performance a good quality leisure battery is recommended.

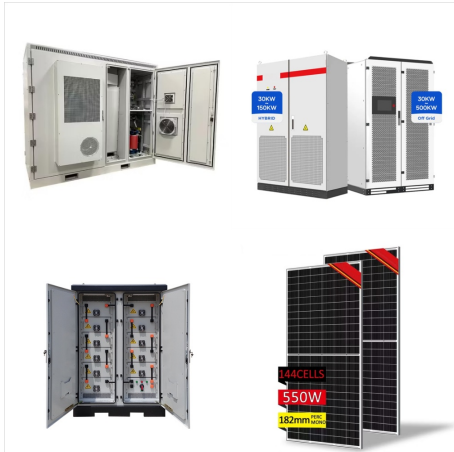


I have a PMS 3H power management system in my campervan. I do not have any instructions in how to use it. Can anyone tell me if the charger supply switch has to be on for my leisure battery to be charged from the engine battery or is this just for when the van is connected to mains electricity. There is also another switch called battery selector.



Bonus electrical PMS 3H Power Management System (Horizontal) The Bonus Electrical PMS 3H (Horizontal) Motorhome Control Panel is a high quality, easy to install all in one electrical control unit which is perfect for new builds or ???

BONUS ELECTRICAL PMS 3H POWER MANAGEMENT SYSTEM



We repay our loyal customers with best Price and high-quality Bonus Electrical PMS 3H Power Management System (Horizontal) - Truma Shop
We repay our loyal customers with best Price and high-quality Bonus Electrical PMS 3H Power Management System (Horizontal) - Truma Shop.
Skip to content. ???, Save big on your favorite styles?????,? 20% off



Bonus Electrical PMS 3H (Horizontal) Control Panel. The Bonus PMS3 is specifically designed for conversions where the user is looking for a simple system to perform basic tasks, whilst charging your leisure battery and fuse protecting your 12v appliances, such as powering your campervans fridge and lighting.



Hi ya, The Nest has got a very old "PMS4", I constantly leave the Battery charger rocker switch located on the top in the "Charge" position. This of course only produces charge when on hook up or Genny. If I want the Leisure Battery charged I flick the power distribution panel rocker switch located in my galley area (Far Left of the panel) to "Aux" if I want the ???

BONUS ELECTRICAL PMS 3H POWER MANAGEMENT SYSTEM



Comfortable Bonus Electrical PMS 3H Power Management System (Horizontal) at Outdoor Camping: Great Birthday Gifts for Friends North Dakota United States. Skip to content ?????,? Shop now for the best prices of the season???? 20% off all purchases ????



PMS 3h - Power Management System. Thread starter andy greenwood; that would power the 12v system in my camper van, this is the 1st time we've been away this time of year and after 4 days the leisure battery has gone flat. You need a DC-DC charger to charge from the alternator and the PMS mains "charger" is only really a power supply



You need a DC-DC charger to charge from the alternator and the PMS mains "charger" is only really a power supply for your 12 volt circuits when hooked up to the mains. At 13.8 volts it will maintain a full battery will not charge a depleted one.

BONUS ELECTRICAL PMS 3H POWER MANAGEMENT SYSTEM



You Will Earn 379 points which is the equivalent of ?3.79 PMS3 Horizontal Power Management System, the Power Management System PMS3 is a 230 Volt AC mains and 12 Volt DC power control unit, providing all the necessary features or the control of the electrics in your caravan, campervan, motorhome or horsebox.



not totally sure but think its a pms3 power management system for charging battery"s. Quote; Link to comment Share on other sites. All PMS units have a built in 13. 8v 12Amp power supply that runs off the mains supply, set at 13. 8v it does a good job of charging the battery but fully charging requires upward of 14. 4v so can never fully



Sargent EC155 / EC51 Complete Power Management System PMS. Rating Required. Sargent EC155 / EC51 Complete Electrical Kit contents. EC155 Power Supply Unit; EC51 Control Panel; 5 Metre length Control lead; EC155 DIY 230V & 12V Harnesses; Waste Water Harness; Fresh Water Harness;

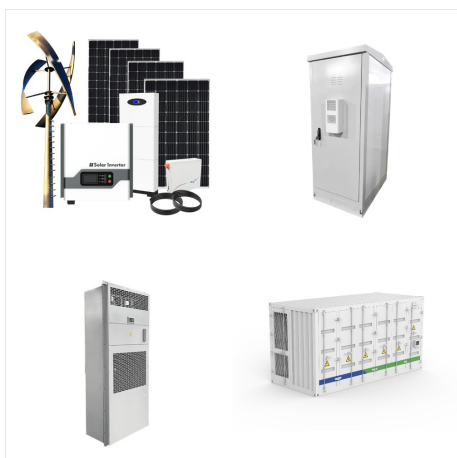
BONUS ELECTRICAL PMS 3H POWER MANAGEMENT SYSTEM



Sargent EC155 / EC51 Complete Power Management System PMS ?339.95 Sargent EC155 / EC51 Complete Electrical Kit Specifically designed for individuals building their own motorhome or caravan conversion, the EC155 / EC51 Complete Electrical Kit is an ideal choice for

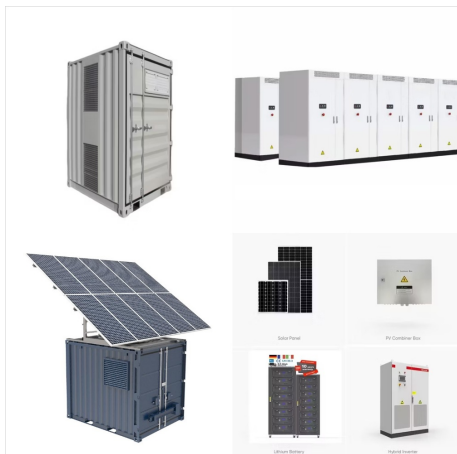


PMS 3h - Power Management System. Thread starter andy greenwood; Start date 12 Oct 2018; Tags bonus pms3h pms sargent Oh and a lovely switch cover to stop any use of the PMS 3H onboard charger. Cheers! KiwiDaveNZ Member. Hopefully one of the auto electrical guys here can explain why yours is setup the way it is. Good luck with it. T.

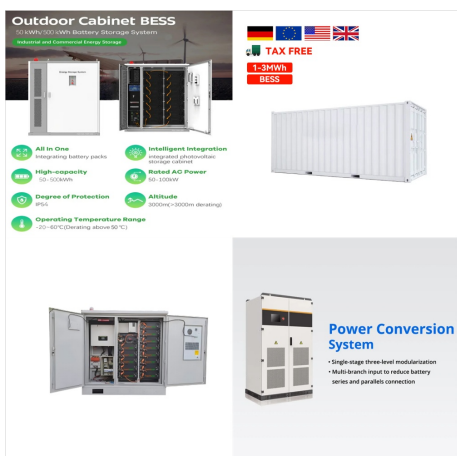


VAN position : When in this position dc power is available from the caravan/motorhome battery to power all 12 volt electric circuits. If the charger is switched on, the battery will be charged up via the charger/transformer unit. OFF position : With the charger/power supply off, this position isolates all DC power in the caravan/motor-home.

BONUS ELECTRICAL PMS 3H POWER MANAGEMENT SYSTEM



As I said above, the Herald had a power-supply/charger with a similar 13.8V output to the PMS 3h but, although we "wild-camped", we did this for no more than two nights per stop and drove a significant mileage between those stops during which time the Herald's leisure-battery was being charged at 14.4V by the motorhome's alternator.



Electrical PMS-3H system - leisure battery life/charging I have the Bonus PMS-3H power system fitted in my T4 camper. Had the van 2 years now, been on holidays and off grid a few nights etc with no issues. (On the power management system I also have fitted an lcd display that shows the battery voltage. In the past when the van is sat on



The PMS electrical distribution unit is a mains and 12V DC power control unit, providing all the necessary features for the control of the electrics in your camper The Power Management System 3 is designed to work with a battery in circuit, for optimum performance, we recommend a good quality leisure battery. Supplied with full installation and user instructions.