

Ten high-density Bosch CORE18V cells are welded and rail-connected to deliver what Bosch claims is 80% more power, longer runtime, and better heat transfer with updated CoolPack technology over previous generation Bosch batteries. The Bosch CORE18V battery is 100 percent compatible with all 18-volt Bosch Lithium-ion tools and chargers.

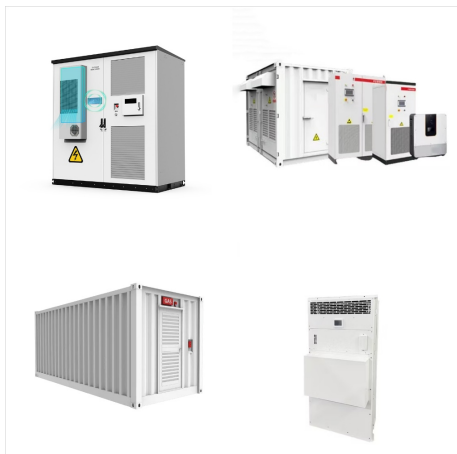


Shop Bosch PROFACTOR 18-V Lithium Battery (12 Ah) in the Power Tool Batteries & Chargers department at Lowe's . The Bosch CORE18V(R) 12 Ah High Power Battery delivers equal power and at least 50% more runtime than the CORE18V(R) 8 Ah battery, powering high-demand 12 Volt Power Tool Batteries & Chargers. Bosch Masonry Drill Bits.

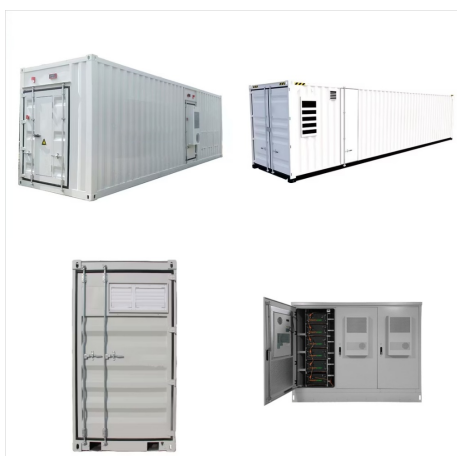


AdvancedOrbit 18. Battery voltage: 18.0 V; Sanding pad diameter: 125 mm; Orbital stroke rate: 6,000 ??? 24,000 opm; Orbit Diameter: 3.2 mm; Weight excl. battery: 1,4 kg; AdvancedMulti 18. The Bosch lithium-ion batteries impress with their power, weight and low space requirement, are always ready to be used and can be fully or partially

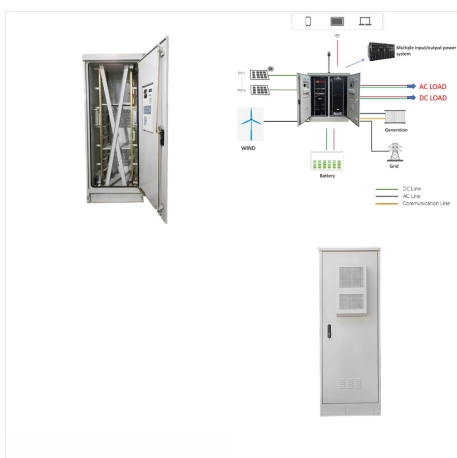
BOSCH 18 VOLT LITHIUM ION BATTERY



wowrmaykay Replacement for Bosch 18V Battery 4.0Ah Lithium ion Rechargeable Bateria Compatible with Bosch Tools BAT609 Batteries. 4.8 out of 5 stars 389. 4 offers from \$11499 \$ 114 99. Bosch GAS18V-3N 18 V 2.6-Gallon Wet/Dry ???



GBA 18V 2.0Ah Batteries & chargers | Lightweight design enables comfortable work, especially when using drill drivers, COOLPACK 1.0 improves heat dissipation from the inside to the outside of the battery for longer lifetime and runtime, Compatible with all tools and chargers of the Bosch Professional 18V System and the AMPShare Alliance



Battery Adapter for Bosch 18V Lithium-Ion Cordless Tool, Compatible with Dewalt 18V 20V Max/ Milwaukee M18 18V Li-ion Battery Convert to Bosch 18V Compact Lithium Battery BAT608 BAT609 BAT612 BAT618 BAT610G 18-Volt Lithium-Ion HC (High Capacity) 1.5Ah Lithium-Ion Slim Pack Battery with Fuel Gauge. 4.3 out of 5 stars. 61. \$56.99 \$ 56. 99

BOSCH 18 VOLT LITHIUM ION BATTERY



Replacement for Bosch 18V Battery 4.0Ah Lithium ion Rechargeable Bateria Compatible with Bosch Tools BAT609 Batteries. 4.5 out of 5 stars. 44. 100+ bought in past month. BAT610G 18-Volt Lithium-Ion HC (High Capacity) 1.5Ah Lithium-Ion Slim Pack Battery with Fuel Gauge. 4.4 out of 5 stars. 62. \$56.99 \$ 56. 99.



The Bosch BAT622 battery is the lightest, most compact and longest runtime FatPack-style battery available in the power tool industry. CoolPack heat-conductive housing is specifically designed to cool internal cell temperatures for 100% longer recharge life. The battery is compatible with the complete line of 18V Lithium-Ion power tools. The Bosch BAT622 battery ???

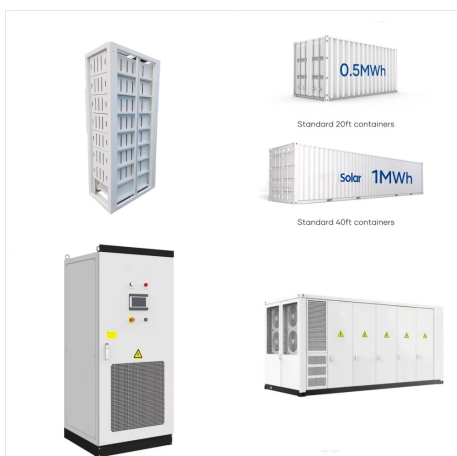


Bosch GBA18V40-2PK 18V CORE18V(R) Lithium-Ion 4 Ah Advanced Power Battery, 2-Pack - Amazon . Cools the battery 15% faster and provides 135% longer lifetime compared to non-CoolPack Bosch 18V Lithium-ion batteries. 18 volts. 12 volts. 18 volts. 18 volts. 18 volts. 18 volts. reusability: Rechargeable.

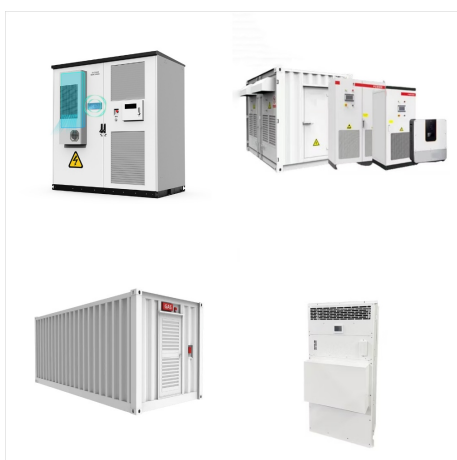
BOSCH 18 VOLT LITHIUM ION BATTERY



The Bosch(R) CORE18V(R) high power battery delivers 50% more runtime and over 75 percent more power than the CORE18V(R) 4 Ah battery, powering high-demand applications. The battery has Bosch(R)-exclusive CoolPack& trade; 2.0 technology to cool the battery faster and provide longer life. It weighs only 2.14 pounds, providing the ideal balance of size, weight, and power. ???



Shop Bosch 18-V Lithium Battery (4 Ah) in the Power Tool Batteries & Chargers department at Lowe's . Power and runtime ??? delivers 2x the runtime and 60% more power compared to BAT612 18V 2 Ah battery. High-power lithium-ion cells ??? features a single layer of enhanced 21700 cells for greater battery efficiency.



18V Lithium-Ion 2 Ah Standard Power Battery. More power and runtime - delivers 25% more power and more than 30% runtime compared to previous generation BAT611 1.5 Ah battery; Efficient size ??? provides 18V power and 2 Ah in a lightweight .75 Lbs. battery; CoolPack technology ??? keeps battery cooler for up to twice battery lifetime

BOSCH 18 VOLT LITHIUM ION BATTERY



wowrmaykay Replacement for Bosch 18V Battery 4.0Ah Lithium ion Rechargeable Bateria Compatible with Bosch Tools BAT609 Batteries The core 18 volt battery now fits the saw. The saw update takes a day or less. Read more. 15 ???

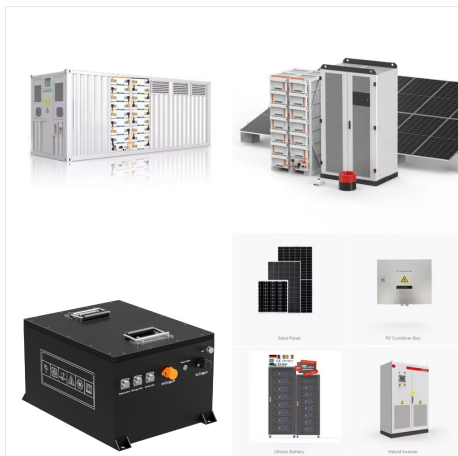


Shop Bosch 18-V Lithium Battery (4 Ah) in the Power Tool Batteries & Chargers department at Lowe's . Power and runtime ??? delivers 2x the runtime and 60% more power compared to BAT612 18V 2 Ah battery. High-power lithium ???



Equipped with CoolPack 2.0??? technology that cools batteries 15% faster compared to non-CoolPack??? Bosch 18V batteries. Compatible with all Bosch 18V lithium-ion batteries Join our email list Subscribe now for new product updates and more. Subscribe Follow us

BOSCH 18 VOLT LITHIUM ION BATTERY



BOSCH CS10 15 Amp Circular Saw 7-1/4 Inch Blade 0-56 Degree Bevel Capacity, 120 Volt. Bosch GBA18V80 18V CORE18V(R) Lithium-Ion 8 Ah High Power Battery. 18V CORE18V Lithium-ion Batteries are made to deliver performance for any job (sold separately).

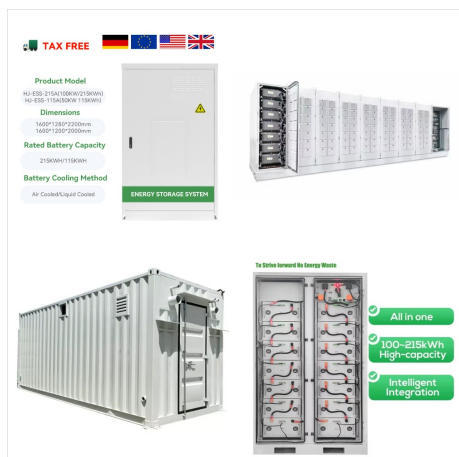


The Bosch lithium-ion batteries are impressive in terms of performance, weight and space requirements, are always ready for use and can be re-charged at any time. Battery voltage: 18.0 V; Weight: 0,558 kg; Compare. Starter Set 36V (GBA 36V 4.0 Ah + AL 36V-20) Battery voltage: 36.0 V; Compare. UniversalUSB 18V-45. Battery voltage: 18.0 V;



Replacement for Bosch 18V Battery 4.0Ah Lithium ion Rechargeable Bateria Compatible with Bosch Tools BAT609 Batteries. 4.5 out of 5 stars. 43. 100+ bought in past month. KUNLUN 5.5Ah HPB18-OPE 18 Volt Lithium-Ion Battery Replacement for Black and Decker 18V Battery HPB18 HPB18-OPE 244760-00 A1718 FS18FL FSB18 Firestorm Cordless Power Tools.

BOSCH 18 VOLT LITHIUM ION BATTERY



The Bosch(R) GX18V-15N15 CORE18V(R) compact starter kit delivers next-generation battery performance and a convenient charger. The CORE18V(R) compact battery is the next-generation lithium-ion battery that preserves power and runtime while reducing weight. Engineered with 21700 cell technology, the GBA18V40 single-layer battery matches the power from the original ???

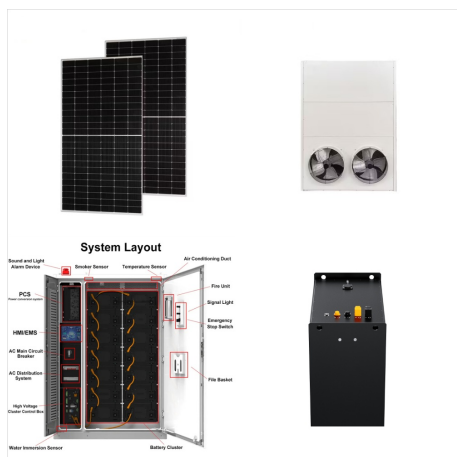


G 18-Volt Lithium-Ion HC (High Capacity) 1.5Ah Lithium-Ion Slim Pack Battery with Fuel Gauge. 4.4 out of 5 stars. 62. \$56.99 \$ 56. 99. FREE delivery Nov 13 - 19 . Or fastest delivery Fri, Nov 15 . Add to cart-Remove. Battery Adapter for Bosch 18V Lithium-Ion Cordless Tool, Compatible with Dewalt 18V 20V Max/ Milwaukee M18 18V Li-ion

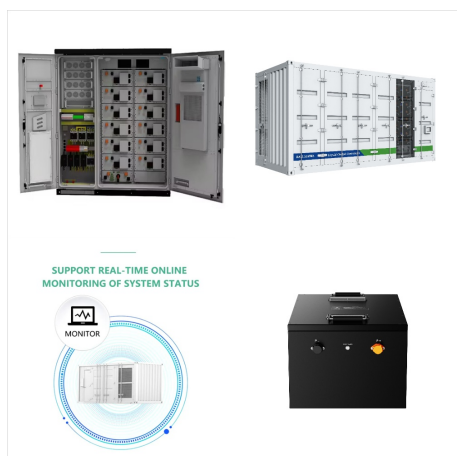


Shop Bosch 18-V Lithium Battery (2 Ah) in the Power Tool Batteries & Chargers department at Lowe's . The Bosch BAT612 2 Ah Standard Power Battery delivers the power you need at a light weight for general applications such as screwdriving and fastening. Built with a single layer of 18650 Lithium-ion cells, the battery is efficient and

BOSCH 18 VOLT LITHIUM ION BATTERY



Shop Bosch 18-V Lithium Battery Kit (4 Ah) in the Power Tool Batteries & Chargers department at Lowe's . The Bosch GXS18V-15N15 CORE18V Compact Starter Kit delivers next-gen battery performance and a charger. The CORE18V Compact Battery is the next-gen Lithium-ion battery to keep the power and runtime, while losing the weight. Engineered



You may choose from an array of options including Bosch 12V batteries, Bosch 18V batteries, and Bosch 36V lithium-ion batteries, as well as the Bosch ProCORE (4.0 ah, 8.0 ah, up to 12.0 ah) series. These batteries feature longer run times, less weight, and greater durability.



The new 5.0 Ah 18 V Bosch FatPack battery offers 25% more runtime (compared to Bosch 4.0 Ah) and more than 65% more runtime (compared to 3.0 Ah). CoolPack Design technology, including advanced heat conductive housing, keeps the battery cooler for 2X longer recharge life. Check the charge status quickly and easily using the integrated fuel gauge. These batteries ???

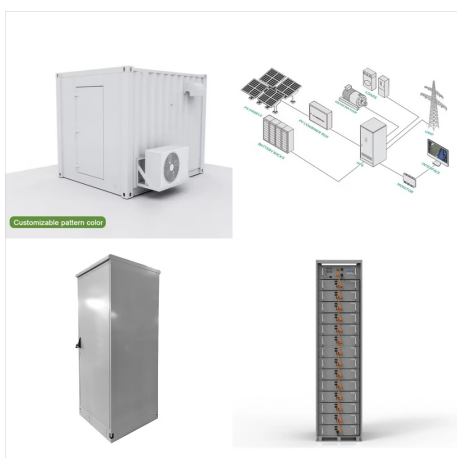
BOSCH 18 VOLT LITHIUM ION BATTERY



Charger Volt Range: 14.4V - 18V : Length in: 7.3
"Model Number: BC1880 : Used on Model No. All
Bosch 18V Lithium-Ion Batteries : Weight: 1.53 lb:
Works With: Bosch 18V Batteries, All Bosch 18V
Lithium-ion Batteries, including the GBA18V120 12
Ah Battery : Includes (1) BC1880 18V Fast Battery
Charger : BC1880 Professional: Further information



The Bosch GAL18V-40 Lithium-ion charger has a
4-Amp charging current, delivering 2x the charging
current vs. the GAL18V-20 standard charger. It can
fully charge a spent CORE18V(R) 4 Ah Lithium-ion
battery in 65 minutes. It provides regulated
dual-mode charging, which charges a battery fast
while maintaining overall battery health.



Bosch batteries feature the most advanced
Lithium-Ion technology available. They guarantee
maximum cycle life, excellent cold weather
performance and up to 50% greater run time. With
the unique Bosch CoolPack technology, the cells in
special 14.4V/36 volt lithium-ion batteries are
perfectly protected because the especially
conductive material (red cooling fins) on the bottom
???

BOSCH 18 VOLT LITHIUM ION BATTERY



This battery is compatible with Bosch 18V tools and optimized to drive Bosch PROFACTOR??? tools with BITURBO Brushless??? Technology. It's compatible with Bosch 18V chargers and the AMPShare??? System. The air-cooled Bosch GAL18V-160C can fully charge a spent CORE18V(R) 8 Ah Lithium-ion battery in about 51 minutes in standard mode.