



How do I connect my Bose solo 15/10 Series II?

Connect your TV to the system using one of the three cable options. The optical cable is the preferred method for connection. Place the Solo 15/10 series II system where you had your TV. Inserting the plug in the wrong orientation can damage the plug and/or the connector. Hold the optical cable's plug with the Bose logo facing up.

How do I contact Bose ®; solo 15/10 TV sound system?

Refer to the address sheet included with the Solo 15/10 TV sound system. In the U.S. only, call: 800-901-0472. Your Bose®; Solo 15/10 TV sound system is covered by a limited warranty. Details of the limited warranty are provided on the product registration card that is included in the carton.

Does Bose solo fit a 46 inch TV?

Thank you for choosing the Bose®; Solo 15/10 TV sound system for your home. This stylish, unobtrusive speaker system is designed to fit under most 46" TVs and many 50" TVs. It delivers superb acoustic performance that will greatly enhance your TV viewing experience. If any part of the product appears to be damaged, do not attempt to use it.

How do I get a warranty on my Bose ®; solo 15/10 TV?

In the U.S. only, call: 800-901-0472. Your Bose®; Solo 15/10 TV sound system is covered by a limited warranty. Details of the limited warranty are provided on the product registration card that is included in the carton. Please refer to the card for instructions on how to register. Failure to register will not affect your limited warranty rights.

Is the Bose solo TV sound system a good choice?

In summary, the Bose Solo TV Sound System is a reliable and high-quality home cinema set that delivers clear and balanced sound. Its advanced technology and convenient features make it an ideal choice for enhancing your TV viewing experience. Can't find the answer to your question in the manual?

Does the Bose solo TV sound system have a bass adjustment?

The Bose Solo TV Sound System does not have a separate bass adjustment feature. However, you can

BOSE SOLO 15 TV SOUND SYSTEM MANUAL



adjust the overall bass level indirectly by adjusting the bass settings on your TV or audio source. Can I connect external devices,like Blu-ray players or gaming consoles,to the Bose Solo TV Sound System?



China Importer: Bose Electronics (Shanghai)
Company Limited, Part C, Plant 9, No. 353 North
Riyang Road, China (Shanghai) Pilot Free Trade
Zone EU Importer: Bose Products B.V., Gorslaan
60, 1441 RG Purmerend, The Netherlands Taiwan
Importer: Bose Taiwan Branch, 9F-A1, No. 10,
Section 3, Minsheng East Road, Taipei City 104,
Taiwan



Bose (R) Solo 15/10 series II TV sound system
Owner's Guide ??? Brugervejledning ???
Bedienungsanleitung ??? Gebruikershandleiding
Gu?a del usuario ??? K?ytt?ohje ??? Notice
d'utilisation ??? Manuale di istruzioni ??? Kezel?si
?tmutat? Brukerveiledning ??? Podr??cznik u? 1/4
ytkownika ??? Manual do propriet?rio ???
Bruksanvisning

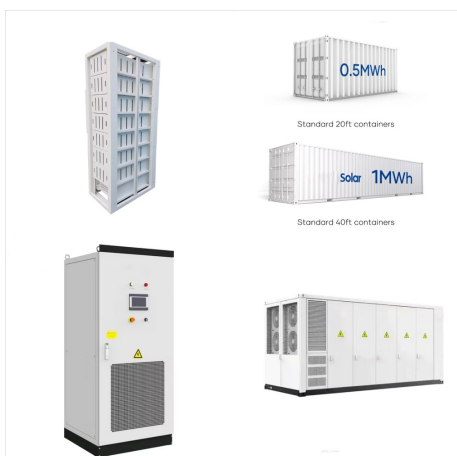


Setting up your product. Learn how to set up your
product, connect components and enjoy the benefits
of all its features. Plug in your product: Connect the
power cord from your product to ???

BOSE SOLO 15 TV SOUND SYSTEM MANUAL



While the Solo 15 Series II system shares many features and benefits with the original Bose Solo 15 TV Sound System???including a dedicated center speaker for improved intelligibility, driver placement for improved spaciousness, bass that adds impact to your shows, one-connection convenience, advanced digital signal processing including TrueSpace(R) technology, the ability ???



Solo 15/10 TV sound system Solo 10 remote Power cord (The appropriate power cord for your region is included) Optical digital audio cable Analog stereo audio cable Solo 15 universal remote Coaxial digital audio cable (Included in Europe only) If any part of the product appears to be damaged, do not attempt to use it.



Bose (R) Solo 15/10 series II TV sound system Owner's Guide ??? Gu?a del usuario ??? Notice d"utilisation . 2 - English Important Safety Instructions Regulatory Information Please read this owner's guide carefully and save it for future reference.

BOSE SOLO 15 TV SOUND SYSTEM MANUAL



Solo 5 Stereo System manuals and instructions online. Download Bose Solo 5 PDF manual. Sign In Upload. Download Table of Contents Contents. Add to my manuals. Your TV sound system provides clear, spacious sound from one compact soundbar. Stereo System Bose Solo 15/10 series II Important Safety Instructions Manual. Tv sound system (20



Solo 15 TV Sound System: The Bose Solo 15 TV Sound System is a single speaker solution for your flat-panel TV that dramatically improves the sound of your favorite movies and TV shows. The Bose Solo requires only one audio cable connection to ???



BOSE (R) SOLO 5. TV SOUND SYSTEM. 2 - ITALIANO Utilizzare solo un panno asciutto per la pulizia. 7. Non ostruire le aperture di ventilazione. Installare il prodotto in conformit? con le istruzioni fornite dal produttore. digitali di Classe B previsti dalla Parte 15 delle norme FCC. Tali limiti sono stati fissati allo scopo di assicurare

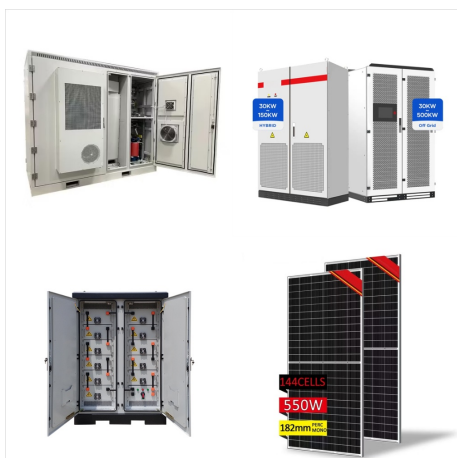
BOSE SOLO 15 TV SOUND SYSTEM MANUAL



Bose Solo TV Sound System specifications. Below you will find the product specifications and the manual specifications of the Bose Solo TV Sound System. The Bose Solo TV Sound System is a home cinema set that enhances the audio of your television. It is comprised of a single compact speaker that can be placed under the TV.



Bose Solo 15 Series II specifications. Below you will find the product specifications and the manual specifications of the Bose Solo 15 Series II. The Bose Solo 15 Series II is a soundbar that offers a wireless audio experience through Bluetooth connectivity. With its sleek design and compact dimensions, it can easily fit into any living room



View the Bose Solo 15 Series II manual for free or ask your question to other Bose Solo 15 Series II owners. Manuals. ca. Manuals. ca. Bose sound bars ? Bose Solo 15 Series II manual. 8 ? 7. give review. PDF user manual ? 56 pages. English. tutorial. questions. specs. Bose Solo 15 Series II. Bose (R) Solo 15/10 series II. TV sound system.

BOSE SOLO 15 TV SOUND SYSTEM MANUAL



View the Bose Solo 15 Series II manual for free or ask your question to other Bose Solo 15 Series II owners. Manua. Is. Manua. Is. Bose sound bars ? Bose Solo 15 Series II manual. 8 ? 7. give review. PDF manual ? 56 pages. English. tutorial. questions. specs. Bose Solo 15 Series II. Bose (R) Solo 15/10 series II. TV sound system.



Manual Bose Solo TV 15. View the Bose Solo TV 15 manual for free or ask your question to other Bose Solo TV 15 owners. Manuals. co.uk. Manuals. co.uk. give review. PDF user manual ? 100 pages. English. tutorial. questions. specs. Bose Solo TV 15. Solo 15/10 TV sound system. Owner 's Guide | Gu?a del usuario | Notice d"utilisation. 1 /



While the Solo 15 Series II system shares many features and benefits with the original Bose(R) Solo 15 TV Sound System???including a dedicated centre speaker for improved intelligibility, driver placement for improved spaciousness, bass that adds impact to your shows, one-connection convenience, advanced digital signal processing including TrueSpace(R) technology, the ability ???

BOSE SOLO 15 TV SOUND SYSTEM MANUAL



The Bose(R) Solo 15 TV sound system is a stylish, unobtrusive speaker system is designed to fit under most 46" TVs and many 50" TVs. It delivers superb acoustic performance that will greatly enhance your TV viewing experience. By continuing to use this site, you accept our use of cookies and other online technology to send you targeted



BOSE Bose Solo 10 & 15 tv sound system (no schematics) Service Manual | Download the High Quality Digitized PDF, or order a High Quality Paperback Manual, Tech Sheet or Supplement. Our BOSE Bose Solo 10 & 15 tv sound system (no schematics) Service Manual provides the important servicing information and operating instructions you need to



Manual Bose Solo TV. View the Bose Solo TV manual for free or ask your question to other Bose Solo TV owners. Can I start the Bose (R) Solo TV sound system without a remote control? This message has been automatically translated. 85. Bose Solo 15 Series II manual 56 pages. Bose Smart Ultra manual 954 pages. Bose SoundTouch 300 manual 990

BOSE SOLO 15 TV SOUND SYSTEM MANUAL



View and Download Bose SOLO 5 owner's manual online. TV SOUND SYSTEM. SOLO 5 speaker system pdf manual download. Also for: 36037901. Speakers Bose Solo 15 II Series Faq (3 pages) Bose Solo 5 Soundbar Manual Your Bose Solo 5 TV sound system tries to connect to the two most recently- connected Bluetooth(R) devices, including your Bose Home



*The Bose Solo 15 Series II TV sound system is designed for TVs with bases no wider than 24" (61cm) and no deeper than 12.25" (31cm). Most TVs 46" (117cm) and smaller meet these requirements, and some 50" (127cm) TVs will fit as well. User Manual (PDF) Brief content visible, double tap to read full content. Full content visible, double tap



View and Download Bose SOLO SOUNDBAR II Series manual online. SOLO SOUNDBAR II Series speakers pdf manual download. Sign In Upload. Speakers Bose Solo 15 II Series Faq Speakers Bose Solo 15 II Series Service Manual. Tv sound system (40 pages) Speakers Bose SOUNDLINK Owner's Manual. Wireless mobile speaker (31 pages) Speakers Bose

BOSE SOLO 15 TV SOUND SYSTEM MANUAL



Page 1 Bose Solo 5 (R) TV Sound System Owner's Guide ??? Guida del usuario ??? Notice d'utilisation; Page 2 ??? This product is intended to be used only with the power supply provided. Bose Corporation hereby declares that this product is in compliance with the essential requirements and other relevant provisions of Directive 1999/5/EC and all other applicable EU ???