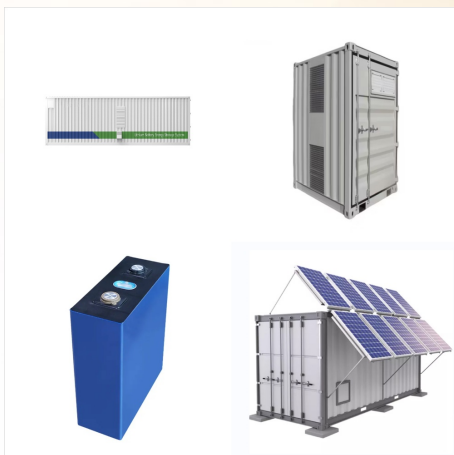




Compatible with Bose Solo 5, Bose Solo 10, Bose Solo 15, Bose Solo 10 Series II, Bose Solo 15 Series II, Bose Solo TV Sound System. Compatible with Bose Solo Soundbar Series II & TV Speaker Model: 418775 410376 431974 845194 838309-1100 740928-1120. No pairing required. CR2025 coin battery included.



The Bose Solo 15 TV sound system solves this problem, easily and unobtrusively. It sits directly under your TV and delivers better sound with a single connection. It features acoustic improvements over the original Bose Solo TV sound system, and is compatible with larger TVs for a more enjoyable experience.



Solo 15/10 TV sound system Solo 10 remote Power cord (The appropriate power cord for your region is included) Optical digital audio cable Analog stereo audio cable Solo 15 universal remote Coaxial digital audio cable (Included in Europe only) If any part of the product appears to be damaged, do not attempt to use it.



Bose (R) Solo 15/10 series II TV sound system
 Owner's Guide ??? Brugervejledning ???
 Bedienungsanleitung ??? Gebruikershandleiding
 Gu? a del usuario ??? K?ytt?ohje ??? Notice
 d'utilisation ??? Manuale di istruzioni ??? Kezel?si
 ?tmutat? Brukerveiledning ??? Podr??cznik u? 1/4
 ytkownika ??? Manual do propriet?rio ???
 Bruksanvisning



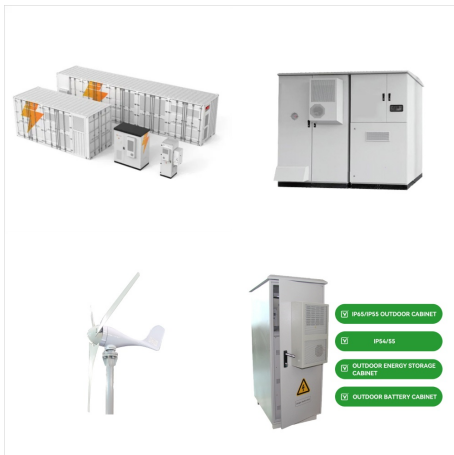
Enjoy dramatic sound for your TV shows with the
 Bose(R) Solo TV sound system, featuring speaker
 array technology for deep, rich sound and digital
 signal processing that enhances detail in dialogue,
 sound effects and music. Features. Speaker array
 technology. Produces wide, even sound throughout
 a room.



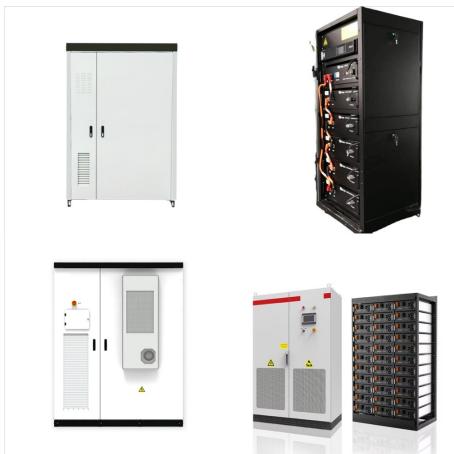
New Remote Control for Bose Solo 5 10 15 Series II
 TV Sound System 418775 410376 431974 845194
 838309-1100 740928-1120 Bose Solo Soundbar
 Series II and TV Speaker. Infrared. 4.1 out of 5
 stars. 893. 400+ bought in past month. \$8.90 \$ 8.
 90. FREE delivery Sat, Oct 12 on \$35 of items
 shipped by Amazon.



*The Bose(R) Solo TV sound system is designed for TVs with bases that are no wider than 20" and no deeper than 10.25". Most TVs up to 32" and many 40" - 42" TVs meet these requirements. MFR # 347205-1300; Item # 018SOLO



If you purchase a new product from Bose through January 10, 2025, and then find a lower price for that same product on our site or through select authorized Bose dealers ??? Best Buy, Target, or Walmart ??? you can request a price match/refund within 14 days of purchase. Terms and conditions may apply.



The Bose Solo 15 TV sound system solves this problem, easily and unobtrusively. It sits directly under your TV and delivers better sound with a single connection. It features acoustic improvements over the original Bose Solo TV sound system, ???



Customer service For additional help in solving problems, contact Bose Customer Service. Refer to the address sheet included with the Solo TV sound system. In the U.S. only, call: 800-901-0472. Page 15: Limited Warranty AINTENANCE Limited warranty Your Bose Solo TV sound system is covered by a limited warranty.



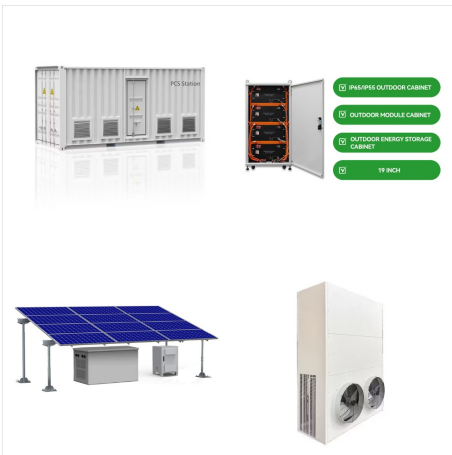
The Bose Solo Soundbar Series II is very similar to the 2019 Bose Solo 5. Both are 2.0 bars with limited features designed to enhance stereo content, which includes most music and TV shows. Their sound is quite similar, and while voices and lead instruments are clear, you miss out on the rumbling low-bass found in bass-heavy music and movies.



item 4 Bose Solo 10 series II TV Sound System 740928-1120 with remote, cable and manual Bose Solo 10 series II TV Sound System 740928-1120 with remote, cable and manual. \$199.00. Ratings and Reviews. Learn more. Write a review. 4.8. 4.8 out of ???



*The Bose Solo 10 TV sound system is designed for TVs with bases no wider than 24" (61cm) and no deeper than 12.25" (31cm). Most TVs 46" (117cm) and smaller meet these requirements, and some 50" (127cm) TVs will fit as well. The maximum weight that can be placed on the Bose Solo 10 system is 75 lbs. (34 kg), which is twice the weight of



Solo 15 TV Sound System: The Bose Solo 15 TV Sound System is a single speaker solution for your flat-panel TV that dramatically improves the sound of your favorite movies and TV shows. The Bose Solo requires only one audio cable connection to



Step 1: Place the system A. Move your TV aside and turn it so you can see the connection panel. B. Place the Solo system where you had your TV. Placement guidelines: The Bose Solo system is designed to fit under TVs that weigh no more than 40 lb (18 kg) and have bases no wider than 20" (508 mm) and no deeper than 10 1/4" (260 mm).



The Bose Solo 10 TV sound system is an easy way to solve the problem. Thanks to advanced Bose technology, you'll hear more of the sound you've been missing ??? like whispered dialogue, carefully placed sound effects, and the music that perfectly sets the mood.



??? Solo 10 series II system??(R)?????????????:
????????? 3/4 ?????????????? ??????????
??<?????????????(C)????????????????????
3/4 ??????
?????(R)??<??(R)?????????????<?????????
????????????????????? 3/4 ??????????????
?????????????????????2??<?????????????(C)?????
????????



This stylish, unobtrusive speaker system is designed to fit under most 46" TVs and many 50" TVs. It delivers superb acoustic performance that will greatly enhance your TV viewing experience. Unpacking Carefully unpack the carton and confirm that you have all the parts shown here: OR Solo 15/10 TV sound system Solo 10 remote Power cord (The