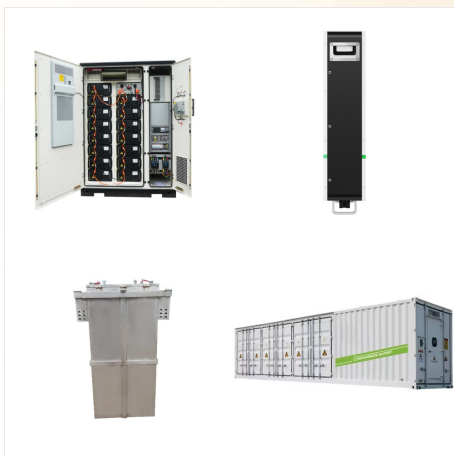




KingBoss Portable 120W Solar Panel The solar panel is designed for any outdoor adventure, with an easy setup for optimal sun exposure. Explore it Kingboss Accessories As well as the high quality of our products, we want you to enjoy them for many more years than the average. Explore how to take care them.



For example, a 6.6 kW solar system typically consists of 20 panels each delivering 330W of power. Solar Panel Wattage. Divide the average daily wattage usage by the average sunlight hours to measure solar panel wattage. Moreover, panel output efficiency directly impacts watts and the system's overall capacity.



Watt flex panel uses SunPower's high efficiency solar cells with an anti-reflective collection surface. These panels can be installed along curved surfaces up to 30 degrees. The textured collection surface captures reflected light off the panel, packing even more power into the 23% efficient SunPower solar cells.



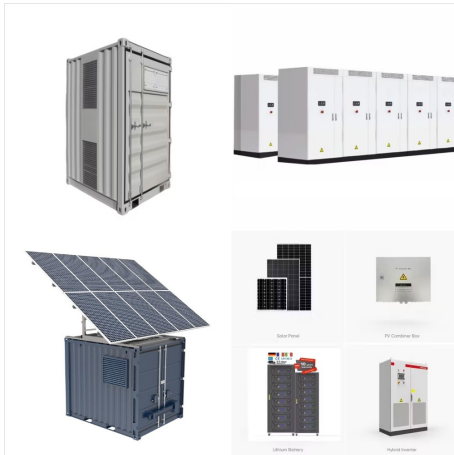
What are 500-watt solar panels used for? 500-watt solar panels are designed for larger solar power installations. They can be found in setups such as: Utility-scale solar farms Commercial jobs Ground-mount systems. Are 500-watt solar panels worth it for your home? 500-watt solar panels have their place, but it is generally not on the roof of



Overview: 230 Watt ETFE Flex Panel Array 6 Year Boss Watt Warranty Maxeon Solar Cells Includes Parallel Connector Details: Shipping now. Full details coming soon. Electrical Specs (Parallel Configuration): Nominal Power: 230 Watts Working Voltage: 21.24 Volts Working Current: 11.00 Amps Open-Circuit Voltage: 24.42 Vol



SunPower's 100W panel provides the same output current as the 110W model, but at a lower voltage. It is designed for systems that need a solar input under 22 Volts. Overview: 100 Watt flexible solar panel Genuine SunPower product 5 year factory warranty. Individually boxed Details: Not all flexible solar panels are



For a 200-watt solar panel setup, you can expect to pay a minimum of \$1,000, including a battery. But that is a small price to pay for access to reliable power. What is the best use of a 200-watt solar panel? 200 W solar panels are best used as a battery charger, like charging up an RV battery or using one for camping or boating.



Overview: 170 Watt Flexible Solar Panel Genuine SunPower Product 5 Year Factory Warranty Premium Cosmetic Quality Details: SunPower's 170 Watt flex panel is the best in portable solar. 48 premium cells work together in a 6x8 pattern to delivery more power than panel on the market. This is a genuine SunPower product,



Before Boss Watt was launched, the original concept was a solar panel unit with built-in 120V outlet. This unit came to life because the company had a solar generator called "Robin". This unit featured a 50 Watt SunPower flexible panel, along with ???



Overview: 170 Watt Flexible Solar Panel Genuine SunPower Product 5 Year Factory Warranty  
Premium Cosmetic Quaility Details: SunPower's 170 Watt flex panel is the best in portable solar. 48 premium cells work together in a 6x8 pattern to delivery more power than panel on the market. This is a genuine SunPower product,

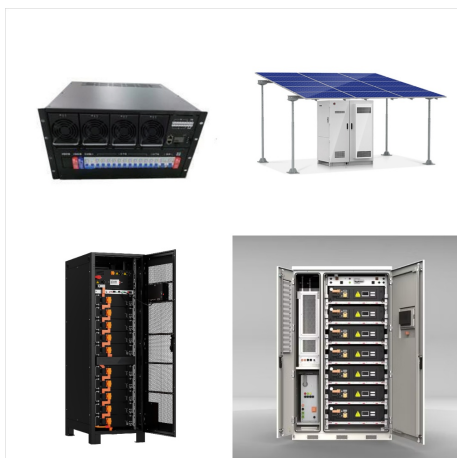


This portable solar panel is perfect for the adventurous traveler, providing both convenience and dependability when venturing off the grid. The Renogy 100W. Renogy 1-Module 24.8-in x 20-in 100-Watt Solar Panel. Item #4794312 | Model #RNG-KIT-STCS100D-NC. Shop Renogy. Stepper number input field with increment and decrement buttons. Best



The best way to gauge how many solar panels you need is to understand the power load needed for your system. Power is measured in watts, and the capacity is commonly measured in Watt-hours (multiplying power output in watts by the required number of hours of operation multiplied by a safety factor of 1.5-2).





Overview: Need a portable solar panel for your off-grid power system? Our 100 Watt briefcase charger supplies power for medium sized off-grid systems. This portable solar panel has a built in leg that props the unit upright so it can face the sun. This kickstand has a locking hinge and an eye-hole to stake the the un



Today's premium monocrystalline solar panels typically cost between \$1 and \$1.50 per Watt, putting the price of a single 400-watt solar panel between \$400 and \$600, depending on how you buy it. Less efficient polycrystalline panels are typically cheaper at \$0.75 per watt, putting the price of a 400-watt panel at \$300.



Solar panels cost an average of \$19,000 to install. That's expensive - but there are ways to reduce solar costs and increase savings. Solar loans will increase your price per watt. The average cost for solar panels financed with a solar loan is between \$3.80 and \$4.25 per watt because of financing fees. Don't be surprised when you get a



Overview: 115 Watt Flexible Solar Panel Premium SunPower Solar Cells 5 Year Power Warranty  
Individually Packaged Details: Sol-Go is a company started by former SunPower's employees. Their modules are marked with an identification barcode and serial number on the back to validate the 5 year power output warranty. Elect



Boss Watt hybrid generators eliminate all utility and cable providers using a combination of solar, battery, and personal cell towers in plug and play system. Custom solar panels for any project. Door delivery microgrids + personal cell towers.



Similarly, a 400 watt solar panel generates up to 400 watts of power with every hour of direct sunshine. Therefore, a 400 W panel can ideally run 80 of the above-mentioned LED bulbs (50 W x 80 = 400W).



In a 5.50 peak sun hour area, a 300-watt solar panel will produce 1.24 kWh per day, 37.13 kWh per month, and 451.69 kWh per year. Example: What Is The Output Of a 100-Watt Solar Panel? Let's look at a small 100-watt solar panel. How do we calculate the electrical output of such a solar panel? Well, we know that it has a rated power of 100W.



Boss Watt portable solar panels are made in California using the latest back contact Maxeon solar cells. Our aluminum formed briefcases panels are extremely durable and lightweight. Custom engineered solutions are available ???



Boss Watt 50 Watt Solar Panel; Kickstand Stakes; Carrying Case with Handle; Instructional Guide & Tips; Solar Extension Cord Included; Solar Panel Specifications: Optimal power [Pmax]: 50W; Working voltage [Vmp]: 18V; Working current [Imp]: 2.7A; Short-circuit current [Isc]: 2.9A;



The Basic Calculation for 800-Watt Solar Panel Power. Before moving to specifics, it's important to remember that the output of a solar panel system isn't just about its peak wattage. The actual energy a system will generate depends on several factors including sunlight duration, geographic location, panel orientation, and seasonal



When it comes to flexible solar, there's SunPower, and then there's everything else. Don't mess with knockoffs. Overview: 110 Watt flexible solar panel Genuine SunPower product 5 year factory warranty Individually boxed Details: Not all ???



Here are a few examples of the dimensions of the most popular solar panel wattages: A typical 100-watt solar panel is 41.8 inches long and 20.9 inches wide. It takes up 6.07 sq ft of area. If you have a 1000 sq ft roof, and you can use 75% of that roof area for solar panels, you can theoretically put 123 100-watt solar panels on a 1000 sq ft roof.