

When did the Boston Science Museum start?

Construction and development began in 1948, and the museum opened in 1951, arguably the first all-encompassing science museum in the country. In these first few years, the museum developed a traveling planetarium, a version of which is still brought to many elementary schools in the Greater Boston area every year.

What is a solar system model?

Solar System models, especially mechanical models, called orreries, that illustrate the relative positions and motions of the planets and moons in the Solar System have been built for centuries. While they often showed relative sizes, these models were usually not built to scale.

How can I create a real scale solar system?

Use your large park to create a TRULY scale model Solar System in both size AND scale, something practically impossible in any other venue. It can be elaborate, like in the above picture from the Peoria Riverfront Museum in IL, or just print out the NASA "Planets to Scale PDF," and find some space.

How does the map a model Solar System work?

The Map a Model Solar System interactive by PBS LearningMedia lets you set the center of the solar system in any location in the United States, pick a scale based on the size of the Sun or Earth, and then see the relative locations of planetary orbits on the map.

What's a good video to scale a solar system?

To Scale: The Solar System by Wylie Overstreet and Alex Gorosh, is a 7 minute artistic video about creating a truly scale model Solar System. It's also downloadable for offline viewing. Also consider their video about the 2017 Eclipse scale model.

Are planetary models built to scale?

While they often showed relative sizes, these models were usually not built to scale. The enormous ratio of interplanetary distances to planetary diameters makes constructing a scale model of the Solar System a challenging task.

# BOSTON MUSEUM OF SCIENCE SOLAR SYSTEM MODEL



The Museum of Science (MoS) is a nature and science museum and indoor zoological establishment located in Science Park, a plot of land in Boston and Cambridge, Massachusetts, spanning the Charles River. Along with over 700 interactive exhibits, the museum features a number of live and interactive presentations throughout the building each day, along with ???



Scale model of the Solar System. Description. The Boston Museum of Science placed models of the planets in major public buildings, all on similar stands with interpretive material. For example, the model of Jupiter, is located in the cavernous South Station waiting area. The properly scaled, basket-ball sized model is 1.3 miles (2.14 km



Media in category "Museum of Science, Boston solar system model". The following 3 files are in this category, out of 3 total. This page was last edited on 29 January 2023, at 04:27. Files are ???

# BOSTON MUSEUM OF SCIENCE SOLAR SYSTEM MODEL



Join the Museum of Science for a science-fiction book club for adults! Each month, we'll select a classic or contemporary sci-fi title to read and discuss. Take a journey through our solar system and explore the remarkable diversity and surprising might of moons! Select



Mini Building Blocks Solar System . \$45.00.  
Member Price: \$40.50. Add to Bag. Space Pops  
Freeze Dried Neopolitan Ice Creamy Pops  
promotions and everything else at the Museum of  
Science on our event calendar. View Events. You  
Can Help 1 ???



2. Calculate the scale of your solar system. a. My planet: b. Divide the real life diameter by the model diameter to find the scale.  $\text{real-life diameter} / \text{model diameter} =$  In the solar system model, represents 3. How big would the Sun be at this scale? To find the size of the Sun in mm, divide the real-life diameter by the scale of

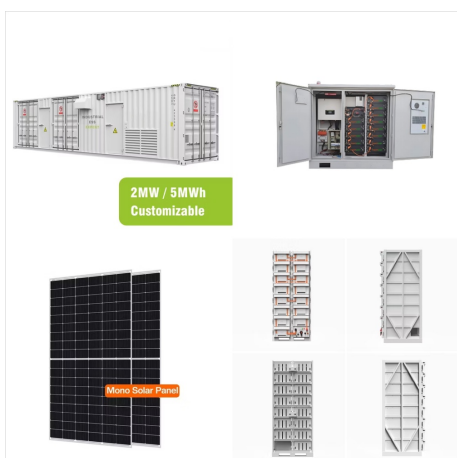
# BOSTON MUSEUM OF SCIENCE SOLAR SYSTEM MODEL



Bundle Museum of Science admission with 3 more top Boston attractions and save 48% - with Boston CityPASS(R)?? tickets. Visit the attractions at your own pace, in any order over 9-days. One easy purchase and mobile ticket delivery saves you time and money.



The sun doubles as a night-light with auto shut off after 20 minutes. The sturdy plastic base of the solar system model indicates the correct placement of the plastic model planets. Please note, the planets all rotate at the same rate of ???



Fly through the solar system, Milky Way, and beyond as you explore cosmic mysteries, see how objects interact in space, and hear about missions that are helping us understand the universe today. Please note for safety reasons there is no late entry into the Planetarium once the doors are closed. Please arrive at least 10 minutes before the show



# BOSTON MUSEUM OF SCIENCE SOLAR SYSTEM MODEL



The Museum of Science (MoS) is a nature and science museum and indoor zoological establishment located in Science Park, a plot of land in Boston and Cambridge, Massachusetts, spanning the Charles River. Along with over 700 interactive exhibits, the museum features a number of live and interactive presentations throughout the building each day, along with ???



The Boston Museum of Science had placed bronze models of the planets in major public buildings, all on similar stands with interpretive labels. [1] For example, the model of Jupiter was located in the cavernous South Station waiting area. The properly-scaled, basket-ball-sized model is 1.3 miles (2.14 km) from the model Sun which is located at



Drone Solar System Model is a 9 minute video about an approximate scale model Solar System using every day objects.; Scale Solar System in Australia a 6 minute video walking through it.; Universe Size Comparison is a 14 minute video animation comparing the size of a range of objects.; Metric Paper & Everything in the Universe is a 9 minute video similar to the ???

# BOSTON MUSEUM OF SCIENCE SOLAR SYSTEM MODEL



Reserve Museum Tickets >> Select the number of tickets and the date for Museum entry, and you will then be able to add Worlds Beyond Earth or other ticketed exhibitions during checkout.. Narrated by Academy Award winner Lupita Nyong'o, Worlds Beyond Earth tells the story of the dynamic worlds that share our solar system and the unique conditions that make ???



The Voyage Scale Model Solar System in Washington, DC. This photo shows the author's family at the model Sun, which is the gold-colored sphere. Looking into the distance you can see the pedestals for the inner planets. Jodi Schoemer (Denver Museum of Nature and Science), and Martha Sewall (then at The Smithsonian).



The Grand Orrery, c. 1750 - This ornate model of the solar system, as it was then known, used a complex clockwork mechanism to demonstrate the relative orbits of the planets around the sun. Whipple Museum of the History of Science This visual guide will help your child know what to expect and ease the anxiety which often accompanies a visit

# BOSTON MUSEUM OF SCIENCE SOLAR SYSTEM MODEL



The Science Museum's astronomy collections span from the 10th century to the present day and contain a wide range of observation and demonstration equipment. Lantern slide showing the solar system, 1838 Model of the Mark 1 (Lovell) telescope, 1961

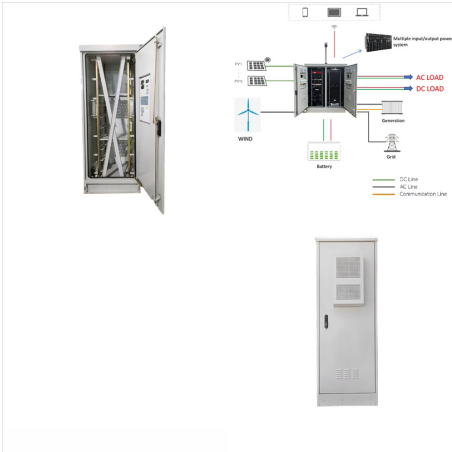


It was created by the Museum of Science, Boston, in collaboration with Pixar Animation Studios. This exhibit featured some of the activities, videos, and images that describe the math, computer science, and science that go into making computer-animated films. In 1997, the museum developed a permanent to-scale community Solar System model



This exhibit is a 1 to 10-billion scale model of the Solar System. All of the dimensions in this model, including the size of and distance between planets, are created to scale. The beginning of the installation (aka, the sun) is located between the Junior Museum & Zoo and the Girl Scout House. The installation ends with Pluto at the Palo Alto Rinconada Library.

# BOSTON MUSEUM OF SCIENCE SOLAR SYSTEM MODEL



The Museum of Science (MoS) is a Boston, Massachusetts landmark, located in Science Park, a plot of land spanning the Charles River. The Museum has developed a to-scale community solar system model that spans as far as the Riverside MBTA station (in Newton, Massachusetts).



A state-of-the-art digital sound system completes the immersion effect. Museum of Science is a Duck Boat departure site. . . Boston Duck Tour tickets can be purchased in advance on their website or (617) 267-DUCK (March 29 ??? November 28). Museum Parking: Parking is available at the Boston Science Museum for 1,000 cars. Hourly rates apply.



The Green Science Hybrid-Power Motorised Solar System Kit equips you and your children with an understanding of our planets and is powered by the Sun itself. The model also runs on a back-up battery for fun all day long. The Science Museum online shop offers carefully curated ranges rich in culture and contemporary design based on the



# BOSTON MUSEUM OF SCIENCE SOLAR SYSTEM MODEL



exploring a more accurate scale model Solar System (or at least part of one) can help students and the public better understand the vastness of space and the challenges of space exploration.



The sun doubles as a night-light with auto shut off after 20 minutes. The sturdy plastic base of the solar system model indicates the correct placement of the plastic model planets. Please note, the planets all rotate at the same rate of speed. Includes multilingual guidebook filled with fun fact. Requires 4 x AA batteries (not included)



Museum of Science, Boston solar system model???  
(3 F) N. Media in category "Museum of Science, Boston" The following 56 files are in this category, out of 56 total. 385188343 monkey.jpg 3,072 x 2,048; 4.45 MB. Aldabrachelys gigantea Aldabra Giant Tortoise Museum Science Boston Frontal food.jpg 4,320 x 3,240; 3.48 MB.