

Why do we regulate the energy sector in Botswana?

Enhancing Botswana's economy by regulating the energy sector. We provide an efficient energy regulatory framework for Electricity, Gas, Coal, Petroleum products, solar and all forms of renewable energy. We ensure that service standards are set and protect customers and consumers from monopoly power of energy. who are we?

Can Botswana meet its energy needs in 2021?

According to the International Renewable Energy Agency (IRENA), Botswana could meet 15% of its energy needs in 2030 from its indigenous solar, wind, and bioenergy resources. (2021 evaluation)

What is the main source of electricity in Botswana?

Coal is the main source of electricity generation in the country, followed by diesel. However, Botswana has ample renewable energy potential to augment generation from coal. Currently, solar energy contributes insignificantly to electricity generation despite the abundance of the resource.

Can Botswana generate electricity from coal?

However, Botswana has ample renewable energy potential to augment generation from coal. Currently, solar energy contributes insignificantly to electricity generation despite the abundance of the resource. There is also wind and coal bed methane potential which have not been fully explored.

What is the energy situation like in Botswana?

Botswana's energy sector is a growing industry with significant potential. Almost all of Botswana's electricity is generated from coal. There are no identified petroleum reserves, and all petroleum products are imported and refined, primarily from South Africa. Botswana also has an extensive supply of woody biomass, ranging from 3 to 10 tons per hectare.

What is the National Energy Policy in Botswana?

The National Energy Policy (2021) and the National Energy Efficiency Strategy (2018) provide the policy framework for energy efficiency in Botswana. BERA is the institution in charge of energy efficiency regulation and the Department of Energy is responsible for the formulation, development, and implementation of an energy efficiency strategy.



7. OVERVIEW AND ANALYSIS OF THE DOMESTIC PRODUCTION OF BEEF MEAT IN BOTSWANA 7.1. Volume, value and dynamics of the domestic production of beef meat in Botswana in the last 5 years and forecast for the medium term 7.2. Characteristics of the main producers of beef meat in Botswana 8. CHARACTERISTICS AND ANALYSIS OF THE ???



ENERGY SECTOR MANAGEMENT ASSISTANCE PROGRAMME (ESMAP) PURPOSE . The Energy Sector Management Assistance Program (ESMAP) is a global technical assistance partnership administered by the World Bank and sponsored by bi-lateral official



BEF | Sustainability Products and Services focuses on collaborating to conserve, restore and revitalize freshwater; creating credible climate solution for business and industry; and finding opportunities for an equitable clean energy future. Clean Water. Renewable Energy. Renewable Energy Certificates. Water Restoration Certificates. Carbon Offsets



GABORONE, August 11, 2014 ??? The government of Botswana invited different renewable energy sector partners to the first ever major workshop on renewable energy. Under the theme, "Towards the Adoption of Renewable Energy," the event aimed to help the government further its strategy for increasing the role of renewables in Botswana's energy mix.



BERA is responsible for providing an efficient energy regulatory framework for Electricity, Gas, Coal, Petroleum products, solar and all forms of renewable energy. It was established by the Botswana Energy Regulatory Act 2016. It started its operations on the 1st September, 2017 and its offices are situated in Lobatse. [Read More](#)



Africa-Press ??? Botswana. Government is eyeing China as a potential market for Botswana beef which is full-flavoured, lean and of very high quality. President Dr Mokgweetsi Eric Keabetswe Masisi revealed this during the Forum On China-Africa Cooperation (FOCAC) thematic round table discussions in China recently.



BOTSWANA ENERGY REGULATORY
AUTHORITY ACT, 2016 No.13 ARRANGEMENT
OF SECTIONS PART I - Preliminary SECTION 1.
Short title and commencement 2. Interpretation
PART II - Establishment and functions of Botswana
Energy Regulatory Authority 3. Establishment of
Authority 4. Objectives of Authority 5. Functions of
Authority 6.



Feature: Solar backpacks aid students' learning,
clean energy uptake in Botswana. Source: Xinhua|
2022-03-31 20:13:46|Editor: huaxia. Kedumetse
Liphi, the 31-year-old innovative creator of Chedza
Solar ???



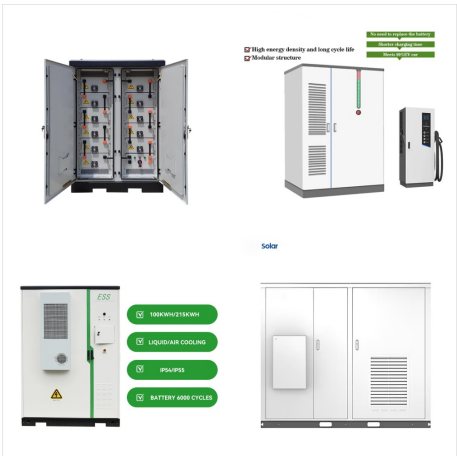
Price Translation in the Botswana Beef-Cattle
Industry Suppose there exists N price observations
 $S_i, i = 1, 2$, where they are collected at equispaced
intervals on the time horizon $[0, T]$ (yearly averages
in this case) and pairwise observations as $(S_{1,1},$
 $S_{2,1}), (S_{1,2}, S_{2,2}), \dots, (S_{1,N}, S_{2,N})$ and finite
realization of a discrete



The feedlotting is a double-edged sword because while it provides strong potential for Botswana's beef exports to recover post-Covid, it also compromises the quality of the beef whose main attraction (even to EU customers) is its taste, taste that is a direct result of the cattle being grass-fed.



Abattoirs in Botswana play a big role in Botswana's beef industry. Beef industry is important for Botswana's rural population, and account for an important source of export earnings. It has been emphasized as a strategic sector within the country's economic diversification drive. Botswana's beef sector is at an unfavorable juncture.



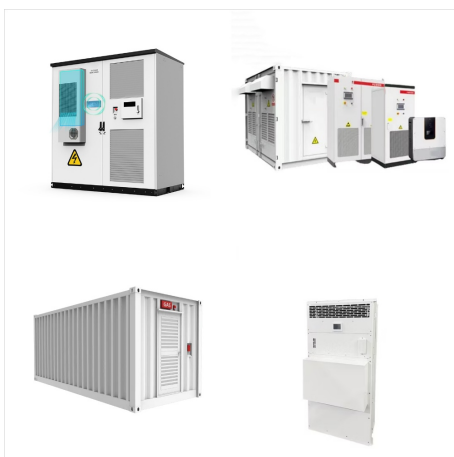
The Botswana Energy Regulatory Authority (BERA) was among the multitudes that descended in Rakops for the Inaugural Boteti West Cattle Expo. Emphasis from the Authority being fuel quality for farm machinery and other BERA services.



BERA is responsible for providing an efficient energy regulatory framework for Electricity, Gas, Coal, Petroleum products, solar and all forms of renewable energy. It was established by the Botswana Energy Regulatory Act 2016. It ???



Botala Energy is a coal bed methane (CBM) exploration and development company focussed on developing production from its 100% owned Serowe CBM Project located in a high-grade CBM region of Botswana (and related early-stage renewable energy opportunities).



Economists note Botswana's considerable potential in mining critical minerals (in addition to diamonds), raising beef, tourism, solar energy, and financial services. BITC assists foreign investors with projects intended to diversify export revenue, create employment, and transfer skills to the citizens of Botswana.



Each of these applications requires sunny days and the direct radiation of the sun, so let's start with some measures of solar radiation. Botswana has about 300 clear days annually and, as noted above, about 3200 hours of sunshine comparison, the state of New Hampshire in the US, where my home university of Franklin Pierce University is located, has ???



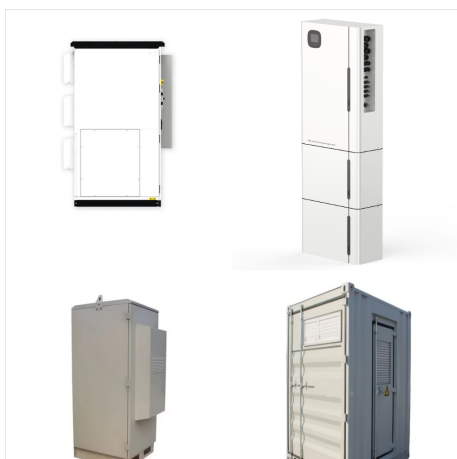
The PESTLE analysis of Botswana provides an overview of the different factors in the country's macro-environment. beef, and tourism. Botswana's economy is primarily driven by the mining industry, particularly the diamond industry, which accounts for a significant portion of the country's GDP and exports. The country has been



Renewable energy refers to bio-energy, solar energy, wind energy and any other as may be specified by the Authority. Renewable sources of energy are no longer viewed as alternative sources of energy but as the real future where all should be given their clean nature, replaceability, availability in vast amounts (e.g. solar in Botswana) and the fact that Botswana ???



Botswana Guardian. Botswana- China Beef Protocol negotiations make headway 2024-02-09 - Ernest Moloï Botswana continues to seek creation of value chains in the agricultural space, renewable energy, digital technology, knowledge and ???



Botala Energy's mission is to enable a successful, secure, and sustainable energy future for Botswana and unlock new economic opportunities. Established in 2018 Botala is currently exploring and developing; the Serowe Gas Project and Solar Opportunities within Botswana. Our current operations centralise around our coal bed methane (CBM)



Your Impact Beyond Renewable Energy. Every REC you buy from BEF does more than just support renewable energy. Each REC purchase supports BEF's mission to restore freshwater ecosystems, prepare the next generation for clean energy jobs, and catalyze a ???



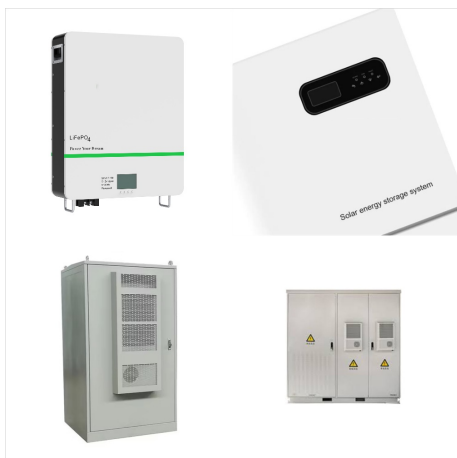
Botswana: Many of us want an overview of how much energy our country consumes, where it comes from, and if we're making progress on decarbonizing our energy mix. This page provides the data for your chosen country across ???



Renewable and Alternative Energy. Energy Industry Equipment. Utility Services. Water. Electrical Energy. Food and Drink. Meat, Poultry and Meat Products. Fat and Oil Products. IMPORTS OF BEEF AND VEAL MEAT TO BOTSWANA IN 2019-2023. Volume, value, and dynamics of the imports of beef and veal meat to Botswana;



Seswaa (Botswana Beef in a Slow Cooker) from Foreigh Fork. This Beef in a Slow Cooker (Seswaa) from my Botswana food library is so flavorful! Pop it in a crock pot for 4.5 hours and you'll have yourself a delicious ???



The Monitor (Botswana) BEF congratula-tes new OP Press Secretary 2024-11-19 - The Botswana Editors Forum (BEF) has congratula-tes Emang Bokhutlo-Mutapati on her recent appointmen-t as Press Secretary at the Office of the President. This prestigiou-s role is a testament to her dedication, resilience, and unwavering commitment to press



The Botswana Meat Commission (BMC) will start selling beef to the lucrative market in China from October 2019. Botswana has always relied heavily on the European Union market but according to BMC spokesperson Brian Dioka, the expected foray into the massive Chinese market is part of the commission's strategy of widening its footprint beyond the EU ???



Mr Leshomo stated that through their parent body Botswana Beef Farmers Association, they had made a proposition to Meat Industry Regulatory Authority expressing their desire to participate in the pricing of their commodity with government assuming an advisory role. As traditional energy costs continue to rise, renewable energy has emerged



Abattoirs in Botswana play a big role in Botswana's beef industry. Beef industry is important for Botswana's rural population, and account for an important source of export earnings. It has been emphasized as a strategic sector within the country's economic diversification drive. Botswana's beef sector is at an unfavorable juncture.