

If the city could own its power it could control the source, and the community was frustrated with Xcel Energy's slow transition to renewable energy. But on Election Day 2020, Boulder voters



Boulder County needs to optimize its use of the voter-approved sustainability tax, continue to vigorously resist additional oil and gas extraction, and support the shift to electrification that is powered by renewable energy sources. None of these are new ideas. We need to remain focused on the ultimate goal and be strategic in our investments.



The development, production, and efficient use of renewable energy will advance the security, economic well-being, and public and environmental health of Colorado, as well as contributing to the energy independence of our nation. Boulder County BuildSmart Zero Net Energy is currently required for new homes above 5,000 square feet of



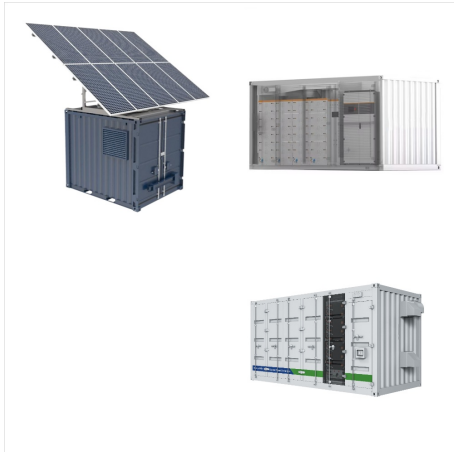
The City of Boulder offers a sales and use tax rebate on solar electric or solar thermal (hot water) systems. The Boulder has carbon emissions reduction and renewable energy goals, which can be viewed . here. Reducing natural gas use in residential homes through electrification of heating systems provides environme ntal, health, comfort and



Getting to this point, a community solar garden that sells 1.2 megawatts of power back into the local grid, wasn't easy, even in a progressive county like his that wanted to expand renewable energy.



Boulder County Community Planning & Permitting Publications Land Use Reviews for Small Renewable Small Renewable Energy Systems Submittal Checklist Form Property Owner Email Address Project Address Property Owner Phone City State Zip Code Agent/Contractor Name Email Address Agent/Contractor Name Address Agent/Contractor Phone City State Zip



Increase Boulder County's adoption of renewable energy ??? Meet all of Boulder County's electrical needs with 100% renewable energy by 2025. ??? Expand capacity of on-site solar electric and solar thermal generation. COMMuniTy sTrATegies Increase energy efficiency, renewable energy, and electrification in



In 2019, Boulder County residents approved a 15-year extension of the Boulder County Sustainability Tax, a 0.125% sales and use tax, that runs through the end 2034. This report highlights work from 25+ programs funded by the Boulder County Sustainability Tax in 2023, featuring snapshots of community experiences, earned media coverage, and more.



Boulder County Energy Impact Offset Fund. Because of its proportionally significant contribution to climate change, Boulder County is requiring commercial cannabis cultivators to either offset their electricity use with local renewable energy, which now includes RenewableConnect, or pay a 2.16 cent charge per kWh. The fees from this surcharge



Outreach Colorado and Xcel Energy in partnership with Boulder County and the City of Boulder. Enrolled qualifying residents will save on average 40-50% off the cost of electricity per year. Available at no-cost to income-qualified homeowners and renters. Receive the benefits of clean renewable energy without needing to place solar panels on



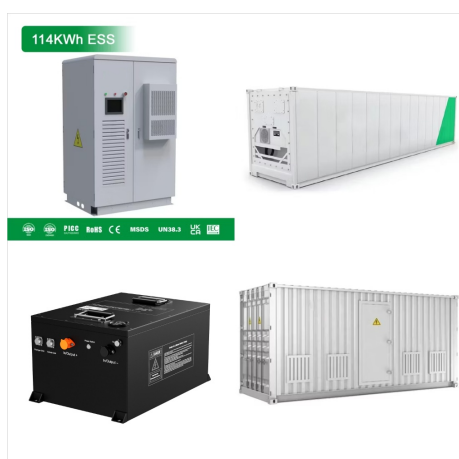
Boulder County low- and middle-income households can get up to \$4,000 in rebates for home energy upgrades. The rebates help pay for upgrades like heat pumps, electric water heaters, insulation, and induction stoves.



Service Area: Boulder County Energy Innovations, LLC 4652 Greenbriar Court Boulder, CO 80305
Phone: 720-281-4554 Email: nuttelmanmax@gmail
Standard Renewable Energy 5757 Arapahoe Avenue Suite C2 Boulder, CO 80303 Phone: 303-449-1965 Fax: 303-440-7391 Email: ???



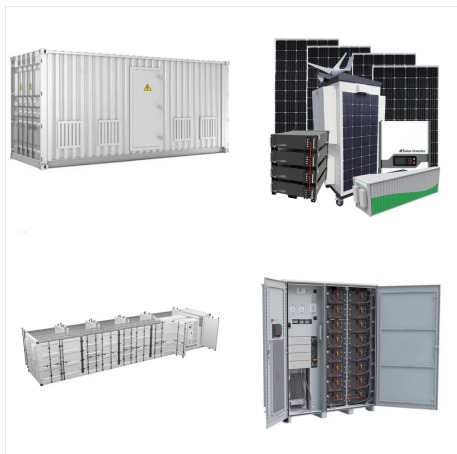
Boulder County requires commercial cannabis cultivators to either offset their electricity use with local renewable energy or pay a surcharge for non-renewable energy usage. The fees from this surcharge are placed into the Boulder County Energy Impact Offset Fund which supports the implementation of sustainable energy practices and funds carbon



The Boulder County Energy Impact Offset Fund (EIOF) collects fees from commercial cannabis cultivators who do not offset their electricity use with local renewable energy. The fees are used to support carbon reduction initiatives, such as investing in solar energy for low-income families.



In Boulder, community members with low incomes often spend more than 8% of their incomes on energy costs to heat their homes and provide electricity to their households. The City of Boulder and partners are developing solutions for income-qualified participants to bring down energy costs through subscriptions to community solar gardens.



EnergySmart Now Makes It Easy To Donate To
Energy Outreach Colorado Participants can now donate a portion of their energy efficiency rebates to help lower income neighbors stay warm this winter Boulder County, Colo. ??? Since 1989, Energy Outreach Colorado's mission has been to ensure that all Coloradans are able to meet their energy needs through ???



Of the \$25 million grant that Boulder County, Colorado, received through the U.S. Department of Energy (DOE), funding was allocated to three different entities: Boulder County, Garfield County, and the City and County of Denver. This funding helped to develop EnergySmart, an energy efficiency program that focuses on reducing barriers to energy improvements.



Electric Vehicles: A Piece of the Renewable Energy Puzzle; Vehicle-to-building EV pilot; E-Bike Incentives; Clean Indoor and Outdoor Air. One of the resources is Energy Smart, which pairs Boulder County residents with an energy efficiency advisor for no cost. Switch to ???



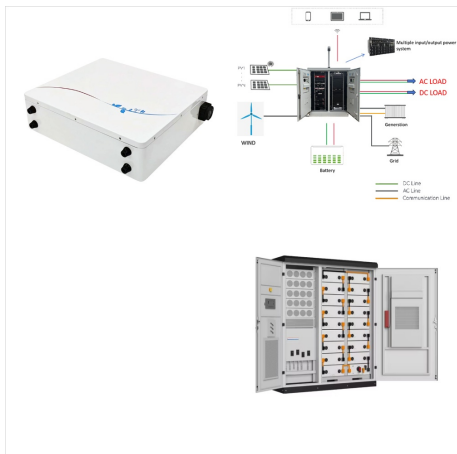
Federal and state tax credits can save EV buyers up to \$10,000. Check out Boulder County's Electric Vehicle Resources and Information for details. Xcel Energy also offers a variety of informational resources on home charging for multifamily properties, incentives and tax credits, and EV charging programs.



Boulder County also recognizes energy efficiency and solar energy as opportunities to create local economic growth and investment. EnergySmart is a service that helps homes and businesses in all Boulder County communities become more energy efficient and comfortable, adopt renewable energy, and save energy and money.



home or business. The impact of Boulder County's investment in energy efficiency and renewable energy has resulted in substantial environmental, economic, and social benefits. IMPACT In the last three years over 12,000 residents have participated in these services. Participants who installed measures have saved an average of \$200



The Energy Impact Offset (EIOF) steering committee will play the important role of making informed decisions related to the management and disbursement of the Marijuana Energy Impact Offset Fund. The goal of this committee is to work collaboratively and make recommendations to the Board of County Commissioners on the best uses of the offset fund monies to make ???



establishment to pay Boulder County for any costs associated with these changes. If a facility closes, it is the responsibility of the cultivation facility owner to return this equipment to Boulder County. I understand that if my cultivation facility begins to utilize a local renewable energy source approved by Boulder County, I will provide



While this is a budding challenge in many communities, the City of Boulder, Boulder County and local growers have been at the forefront of reducing the environmental impact of this important industry. Install on-site renewable energy; Participation in a verified solar garden; Subscribe to Renewable Connect (Xcel Energy's solar garden)