

Where is Bouvet Island?

Bouvet Island (/ˈbuːveɪ /BOO-vay; Norwegian: Bouvetøya [bʊˈvʌːoe]) is an uninhabited island and dependency of Norway. It is a protected nature reserve. It is a subantarctic volcanic island, situated in the South Atlantic Ocean at the southern end of the Mid-Atlantic Ridge, and is the world's most remote island.

How far is Bouvet Island from Antarctica?

Bouvet Island is one of the most remote islands in the world. The closest land is Queen Maud Land of Antarctica, which is 1,700 km (1,100 mi) to the south; 58 and Gough Island, 1,845 km (1,146 mi) to the north.

How did Bouvet Island become a dependency?

The expedition carried out aerial photography of the island and was the first Antarctic expedition to use aircraft. : 64 The Dependency Act, passed by the Parliament of Norway on 27 February 1930, established Bouvet Island as a Norwegian dependency, along with Peter I Island and Queen Maud Land.

Are there humans on Bouvet Island?

In 1971, Norway declared the island a protected nature reserve. Today, there is virtually no sign of human activity at Bouvet, with the exception of a single weather station located at Nyreya. This is the most common landing point on the island created by a rockslide in the 1950s. Penguins are the most apparent life on the island.

Could Bouvet tell us about the past climate of Antarctica?

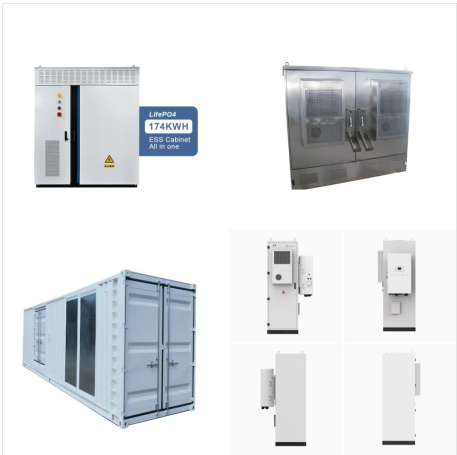
One minute the skies are clear, the next you're surrounded by cloud. No wonder sailors call Bouvet the world's most remote island; no wonder writers and science fiction movie-makers keep using it in their storylines. But this loner is drawing increasing scientific interest for what it could tell us about the past climate of Antarctica.

How did Bouvet Island get its name?

At that point, the island was given its current name of Bouvet Island ("Bouvetøya" in Norwegian). In 1930, following resolution of a dispute with the United Kingdom over claiming rights, it was declared a Norwegian dependency. In 1971, it was designated a nature reserve.



? 1/4 ?? 1/4 ?Bouvet?ya,? 1/4 ?Bouvet Island? 1/4
?,,,??? 8,6.4,58,945???



Bouvet Island (/ ?? b u?? v e?? / BOO-vay;
Norwegian: Bouvet?ya [3] [b????v????????]) [4]
is an uninhabited subantarctic volcanic island and
dependency of Norway. It is a protected nature
reserve, and situated in the South Atlantic Ocean at
the southern end of the Mid-Atlantic Ridge, it is the
world's most remote island.



The northwestern part of Bouvet Island, known as
Nyr?ysa, is the only area where people can easily
access the island. This region is mostly ice-free and
hosts a weather station. Bouvet Island's
northwestern section is also quite rugged, featuring
gravel, lava stone, and boulders.



Bouvet Island is officially designated as a protected nature reserve and holds the distinction of being the most remote nature reserve in the world. The island, known as Bouvet?ya, is ???



The projects were acquired by the NTR Renewable Energy Income Fund II, a wind, solar and energy storage fund that operates across a number of European markets. Murley has been acquired without a government support and NTR will evaluate opportunities to match its clean power output with a high quality power purchase agreement.



The THERM OKH 125 NTR/HV indirect stationary heating storage tank provides 115 l of hot water. The high-quality heating vessel is made from special thick metal sheet and is coated with nickel-free enamel. Together with magnesium anode, ???



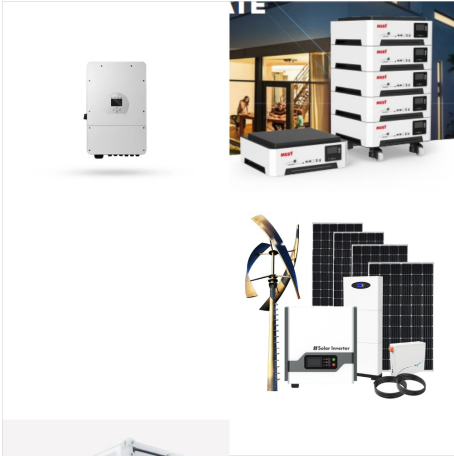
NTR's Renewable Energy Income Fund II has secured ???229m in investor commitments for renewable energy projects across Europe. Credit: NTR. Ireland-based renewables investor NTR has attracted investment commitments in the region of ???229m for the second round of its renewable energy fund.



Quick facts about Bouvet Island. Location: South Atlantic Ocean; Size: 49 square km or 19 square miles; Discovery: Frenchman Jean-Baptiste Charles Bouvet de Lozier in 1739; Status: Norwegian protected nature reserve; Land: An inactive volcano, 93% of the island is covered by a glacier; Where is Bouvet Island?



Quick facts about Bouvet Island. Location: South Atlantic Ocean; Size: 49 square km or 19 square miles; Discovery: Frenchman Jean-Baptiste Charles Bouvet de Lozier in 1739; Status: Norwegian protected ???



The projects were acquired by the NTR Renewable Energy Income Fund II, a wind, solar and energy storage fund that operates across a number of European markets. Murley has been acquired without a ???