



How far is Bouvet Island from Antarctica?

Bouvet Island is one of the most remote islands in the world. The closest land is Queen Maud Land of Antarctica, which is 1,700 km (1,100 mi) to the south, and Gough Island, 1,845 km (1,146 mi) to the north.

Does Bouvet Island have a website?

Bouvet Island now has a registered internet domain, .bv. However, this domain has no known web sites. The Mid-Atlantic Ridge (MAR), where the oceanic crust of the Atlantic Ocean is formed, runs from Iceland southward, ending at the Southern Ocean.

Is Bouvet a volcano?

All deep-ocean islands are volcanic in nature. And because islands erode pretty fast, they tend to be younger volcanoes which are still active or slightly dormant. Bouvet is a shield volcano in the final stage of its life above water. The caldera shows that there have been significant eruptions in the past!

How big is Bouvet Island?

Landing is extremely difficult on the island. It has an area of 23 square miles (59 square km), rises to 3,068 feet (935 metres), and is uninhabited. Bouvet Island was discovered in 1739 by the French navigator Jean-Baptiste-Charles Bouvet de Lozier (1705-86), for whom it is named.

How do you find Bouvet Island?

Find yourself a globe (for younger readers, this is a historical version of Google Earth without a zoom), and locate Bouvet Island. You will find it where the Atlantic Ocean and the Southern Ocean meet (a magnifying glass may be required). Draw a circle around it (permission from the owner of the globe should be sought).

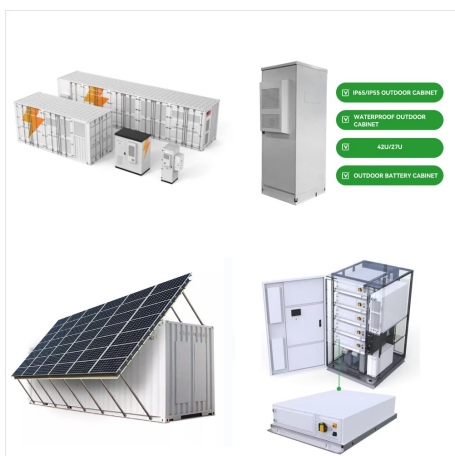
How did Bouvet Island get its name?

At that point, the island was given its current name of Bouvet Island ('Bouvet's' in Norwegian). In 1930, following resolution of a dispute with the United Kingdom over claiming rights, it was declared a Norwegian dependency. In 1971, it was designated a nature reserve.

# BOUVET ISLAND STOCCAGGIO ENERGIA



Bouvet Island, islet in the South Atlantic Ocean. One of the world's most isolated islands, it lies about 1,500 miles (2,400 km) southwest of the Cape of Good Hope of southern Africa and about 1,000 miles (1,600 km) north of the mainland of ???



Bouvet Island (/ ?? b u?? v e?? / BOO-vay; Norwegian: Bouvet?ya [3] [b????v????????]) [4] is an uninhabited subantarctic volcanic island and dependency of Norway. It is a protected nature reserve, and situated in the South Atlantic Ocean at the southern end of the Mid-Atlantic Ridge, it is the world's most remote island.



Bouvet Island (called Bouvet?ya in norwegian) is 49 square kilometer in area. About a quarter of this is taken up by a caldera, called Wilhelmsplataet. The highest point of the island is on the caldera rim, ???

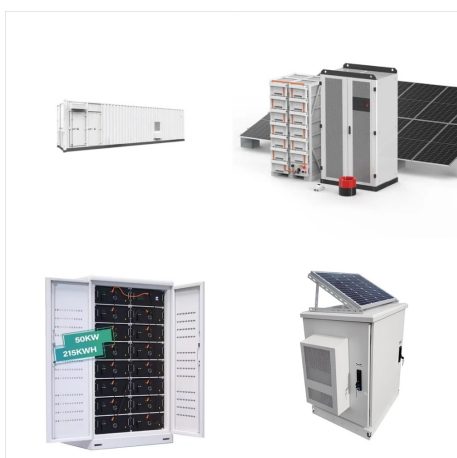
# BOUVET ISLAND STOCCAGGIO ENERGIA



Quick facts about Bouvet Island. Location: South Atlantic Ocean; Size: 49 square km or 19 square miles; Discovery: Frenchman Jean-Baptiste Charles Bouvet de Lozier in 1739; Status: Norwegian protected nature reserve; Land: An inactive volcano, 93% of the island is covered by a glacier; Where is Bouvet Island?



Bouvet Island, islet in the South Atlantic Ocean. One of the world's most isolated islands, it lies about 1,500 miles (2,400 km) southwest of the Cape of Good Hope of southern Africa and about 1,000 miles (1,600 km) north of the mainland of Antarctica. Of volcanic origin, it is ???



PanoramicaGeografiaStorial misteri che la riguardanoL"isola Bouvet nella cultura e nella tecnologia modernaVoci correlateAltri progettiCollegamenti esterni



? 1/4 ?? 1/4 ?Bouvet?ya,? 1/4 ?Bouvet Island? 1/4  
?,,,?? 8,6.4,58,945???



Bouvet Island ? un"isola vulcanica situata nel sud  
dell"Oceano Atlantico ed ? spesso considerata  
l"isola pi? remota del pianeta. L"isola ? lunga circa  
quattro miglia (circa 6.4 km) e larga tre miglia (circa  
4.8 km). Si trova a sud-sudovest del Capo di Buona  
Speranza in Sudafrica.



Bouvet Island (called Bouvet?ya in norwegian) is 49  
square kilometer in area. About a quarter of this is  
taken up by a caldera, called Wilhelmsplataet. The  
highest point of the island is on the caldera rim,  
Olavtoppen, at 780 meter; it was climbed for the first  
time only in ???

# BOUVET ISLAND STOCCAGGIO ENERGIA



Quick facts about Bouvet Island. Location: South Atlantic Ocean; Size: 49 square km or 19 square miles; Discovery: Frenchman Jean-Baptiste Charles Bouvet de Lozier in 1739; Status: Norwegian protected ???