

Bosnia & Herzegovina (BAM ???? ) Botswana (BWP P) Brazil (USD \$) British Virgin Islands (USD \$) Brunei (BND \$) Dual Density PMX Foam????,? Midsole provides maximum energy return & under foot support. ORTHOLITE????,? Footbed, ???



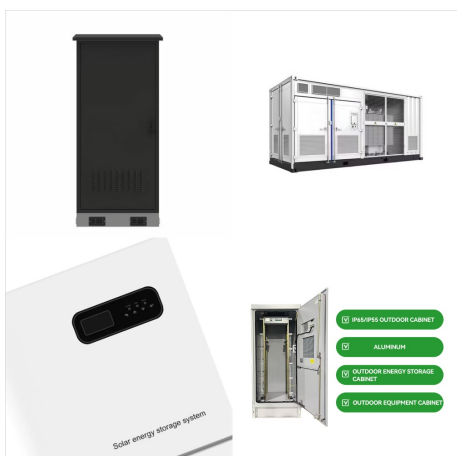
British Virgin Islands U.S. Department of Energy Energy Snapshot Installed Capacity 57.4 MW RE Installed Capacity Share 1.7% Peak Demand (2015) 34 MW Total Generation (2015) 210.2 GWh Transmission and Distribution Losses 13% ETI Energy Snapshot - British Virgin Islands Keywords: ETI, Island Energy Snapshot, British Virgin Islands



The Uusnivala project is just shy of being largest BESS project being built currently in the Nordic country, which at present would be a 56.4MW/112.9MWh system from IPP Neoen (Premium access article).OX2 didn't reveal when the project is expected to come online. The BESS will participate in Finland's ancillary service and wholesale energy markets, being ???



Murley wind farm was acquired by the NTR Renewable Energy Income Fund II in 2022 and construction of the project is significantly advanced. The Fund has invested in onshore wind, solar and battery energy storage projects across six European countries. The operating assets in this Fund produces enough clean energy to power c. 180,000 homes



ATEC BVI facilitates the transition to renewable energy in the British Virgin Islands and the wider Caribbean region. We are local leaders and pioneers in the development of the micro-grid energy production field. Solar energy in BVI. Atec bvi . top of page. E: info@atecbvi T: (284) 340-3409. aTec Home. About Us. Products. Services.



Bosnia & Herzegovina (BAM ???? ) Botswana (BWP P) Brazil (USD \$) British Virgin Islands (USD \$) Brunei (BND \$) Dual Density PMX Foam????,? Midsole provides maximum energy return & under foot support. Ortholite????,? Footbed, compresses less than 5% - so cushioning, fit, and comfort never change.



Bosnia & Herzegovina (BAM ???? ) Botswana (BWP P) Brazil (USD \$) British Virgin Islands (USD \$) Brunei (BND \$) Dual Density PMX Foam????,? Midsole provides maximum energy return & under foot support. Molded Patel Footbed, open cell foam compressed less than 5% - so cushioning, fit, and comfort never change.



PMXNitro+ Midsole provides maximum energy return & ultimate under foot support. CARBITEX GearFlex Bosnia & Herzegovina (BAM ???? ) Botswana (BWP P) Brazil (USD \$) British Virgin Islands (USD \$) Brunei (BND \$) Bulgaria (BGN ?>>??.)



Bosnia & Herzegovina (BAM ???? ) Botswana (BWP P) Brazil (USD \$) British Virgin Islands (USD \$) Brunei (BND \$) Dual Density PMX Foam????,? Midsole provides maximum energy return & under foot support. Ortholite????,? Footbed, ???



This profile provides a snapshot of the energy landscape of the British Virgin Islands (BVI), one of three sets of the Virgin Island territories in an archipelago making up the northern portion of ???



Bosnia & Herzegovina (BAM ???? ) Botswana (BWP P) Brazil (USD \$) British Virgin Islands (USD \$) Brunei (BND \$) Dual Density PMX Foam????,? Midsole provides maximum energy return & under foot support. ORTHOLITE????,? Footbed, compresses less than 5% - cushioning, fit, and comfort never change.



NTR chief investment officer Anthony Doherty stated: "We are constantly looking to diversify the clean energy technologies we use, so Uusnivala is a very attractive addition for us and the Fund. "With the addition of this project, the fund now manages 480MW of onshore and offshore wind, solar and battery energy storage across Spain, France

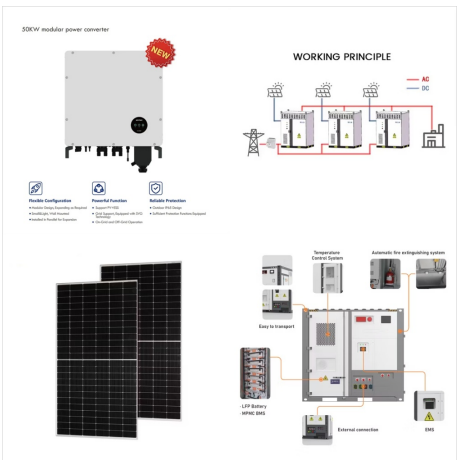




Bosnia & Herzegovina (BAM ???? ) Botswana (BWP P) Brazil (USD \$) British Virgin Islands (USD \$) Brunei (BND \$) delivers golfers maximum energy return to more effectively generate ground reaction force. Soft & responsive under foot cushioning with the PMX Foam midsole; delivers on-course comfort and zonal support for the golf swing.



Bosnia & Herzegovina (BAM ???? ) Botswana (BWP P) Brazil (USD \$) British Virgin Islands (USD \$) Brunei (BND \$) Dual Density PMX Foam????,? Midsole provides maximum energy return & under foot support. PMX Nitro+ Footbed lightweight responsive cushioning for the life of the shoe. see it on course.



Replacement Compatibility for AMI 4 X 40 XLE RO MEMBRANES. Applied Membranes M-T4040AXLE membrane elements can be used as direct replacement for many industry-standard 4x40 size extra-low energy (ultra-low pressure) RO elements with 3/4" male product water tubes ("stinger style") which are rated at 100psi.



Find company research, competitor information, contact details & financial data for Novum Energy Trading Corp of ROAD TOWN, TORTOLA. Get the latest business insights from Dun & Bradstreet. / BUSINESS DIRECTORY / MANAGEMENT OF COMPANIES AND ENTERPRISES / BRITISH VIRGIN ISLANDS / TORTOLA / ROAD TOWN / Novum Energy ???



The British Virgin Islands (BVI), a British Overseas Territory of 59 square miles, consists of approximately 60 islands, cays and islets. The majority of its population lives on the four main islands of Anegada, Jost 1 Energy Policy Framework for the British Virgin Islands, provided by BVIEC to DNV GL on 22 April 2014 . ENERGY POLICY Page 3



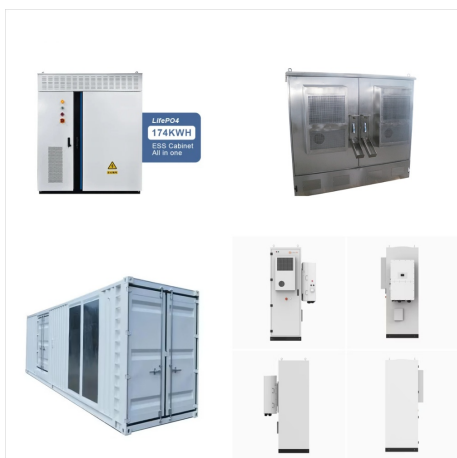
Bosnia & Herzegovina (BAM ???? ) Botswana (BWP P) Brazil (USD \$) British Virgin Islands (USD \$) Brunei (BND \$) Ventilated dual density PMX Foam????,? midsole provides maximum energy return & ultimate under foot support. Patel footbed, open cell foam compresses less than 5%-cushioning, fit, and comfort never change.



British Virgin Islands. U.S. Department of Energy. Energy Snapshot. Installed Capacity . 57.4 MW. RE Installed Capacity Share : 1.7%: Peak Demand (2015) 34 MW: Total Generation (2015) 210.2 GWh: This profile provides a snapshot of the energy landscape of the British Virgin Islands (BVI), one of three sets of the Virgin Island territories



As of 2022, the electricity consumption in the British Virgin Islands is heavily reliant on fossil fuels, with 100% of its electricity being generated from these sources. This complete dependency on fossil energy means that there is currently no contribution from clean energy sources such as nuclear, wind, or solar ch reliance on fossil fuels not only contributes to climate change ???



Buy Online: 8"x40" | 14,000 GPD | Lowest Energy | 99% Rej | FilmTec Membrane | Same-day shipment for all stock orders placed by 3pm. Buy Online: 8"x40" | 14,000 GPD | Lowest Energy | 99% Rej | FilmTec Membrane | Same-day shipment for all stock orders placed by 3pm. British Virgin Islands (USD \$) NTR RO Replacement Cartridges Sediment



Bosnia & Herzegovina (BAM ????) Botswana (BWP  
P) Brazil (USD \$) British Virgin Islands (USD \$)  
Brunei (BND \$) Dual Density PMX Foam????,?  
Midsole provides maximum energy return & under  
foot support. PMXNitro+ Footbed lightweight  
responsive cushioning for the life of the shoe.  
Shipping & handling.