



Please note that this battery is not compatible with the Fox HV2600. The Mira HV25 is designed for use with H1 Inverters. The Fox Mira HV25 system consists of between 2 - 7 battery modules and requires one Mira BMS controller. AB33-38, AB44-56, IV, HS, KA27-28, KW, PA20-88, PH17-26, PH30-44, PH49-50, TR21-25 and ZE. We are unable to deliver



Sungrow 25kw inverter with 25.6kwh Battery  
Storage Sungrow 25kw SH25T Hybrid High-Voltage Inverter specification: Input (DC) Recommended max. PV input power: 50000 Wp. Max. PV input voltage: 1000 V. Min. PV input voltage / Startup input voltage: 150 V / ???



kW Power. 310 Nm Torque. Peace of mind with BYD's Blade Battery technology that's smaller, lighter and safer than conventional lithium iron-phosphate batteries. Brunei Darussalam. Tel: 265 5111. WA: 877 2318. Showroom Hours. Mon ??? Fri: 8.00am ??? 5.30pm.



Met deze Bliq thuisbatterij van 25 kWh (met 8 kW 3-fase ingebouwde omvormer) bespaar je direct op je energierekening. Jij kiest zelf waarvoor je je thuisbatterij gaat inzetten met Bliq Powerflow. Dit kan bijvoorbeeld door met elektriciteit te "traden". Hij koopt stroom op de goedkoopste uren van de dag en verkoopt dit op de duurste uren, op



The fastest way to charge your EV - at a public DC fast charging station with 50 kW or more of power. With this method, you can top up your battery from 20% to 80% in approximately 40 minutes. next. prev. How to Use a Charging Station play. close. play \* Each charger type has an associated set of connectors which are designed for low or high



Quaezar Engineering and Construction is a Bruneian owned and registered company specialising in solar energy and electrical works. Since our establishment is 2015, we have helped clients evaluate and choose the optimal size of solar photovoltaic systems in accordance to their electrical usage and budget.



Brunei EV Battery Market is expected to grow during 2023-2029 Toggle navigation. Home; About Us. About Our Company By Material type (Cobalt, Lithium, Natural Graphite, Manganese, Iron, Phosphate, Nickel, Others), By Battery Capacity (50 kWh, 50110 kW, 111200 kWh, 201300 kWh, >300 kWh), By Li-Ion Battery Component (Positive Electrode



The BCL25-700-8 is a 22 kW liquid cooled on-board battery charger that converts 3-phase AC voltage to DC voltage in hybrid or full electric vehicles. Input power up to 22/25 kW @ 400/480 VAC Typical efficiency 95% AC input range: ???Three phases: 330 - 528 VAC (L-L) ???Single phase: 190 ??? 264 VAC (L-N)



The MK Battery / Deka Solar 6-M100-33 is a 23.3 kWh, 12V (1942Ah @ 24Hrs), maintenance saver six cell flooded battery is designed to deliver reliable, low-maintenance power for renewable energy applications where frequent deep cycles are required.



Shop APC SU3000RMX93 Smart-UPS RM 3000VA Shipboard - UPS ( rack-able ) - AC 120 V - 2.25 kW - 3000 VA - 6 output connector(s) - 5U online at best prices at desertcart - the best international shopping platform in Brunei. FREE Delivery Across Brunei. EASY ???



Experience constant availability of high-capacity energy supply with Arnergy 25kW hybrid inverter and 25kWh (scalable to 75kWh) LiFePO4 battery, and meet critical energy needs for homes and commercial buildings. Designed by Nigeria's leading solar power company to meet global standards and deliver sufficient power supply



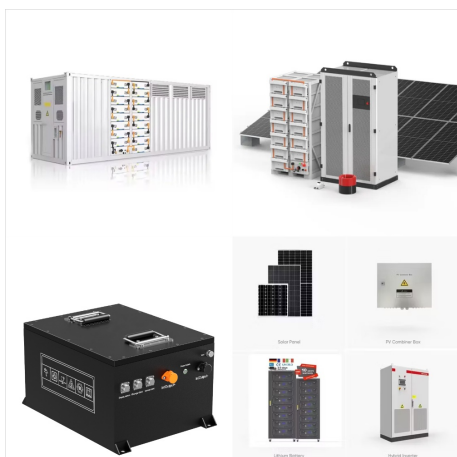
kW system is a building block for larger, higher power 500 kW, 750 kW and higher systems, with independent 250 kW outputs. This very high power battery system has demonstrated long life, safety and reliability in laser applications for customers such as General Atomics and Raytheon.



W Power wall Off-grid system 5KW 10KW 15KW 25KW storage system lithium ion battery for solar panel solar energy system kit. \$3,052.00-\$5,084.00. Min. Order: 1 set. Previous slide Next slide. Solar Panels Power 48V 20kw 25kw 30kw Lifepo4 Lithium Ion Batteries 5kw 10kw 15kw solar energy storage system on-grid for Home.



We provide consultation, design, procurement and installation services of solar photovoltaic systems. Due to the absence of national on-grid solar/renewable energy regulation such as the feed-in-tariff (FiT) or the net energy metering ???



2 Charging time for direct current (DC) with maximum charging power from 10% SoC to up to 80% SoC under optimal conditions (CCS fast charging station with > 320 kW, > 850 V, battery temperature 25°C and initial SoC 9%).



Extendable as needs Support 4-8 modules per unit, max.4 units in parallel(160kWh) Stackable & Modular design Plug and play, no cable between battery modules. Bundle Includes: 1 x Sungrow SBH High Voltage LFP Battery Accessory Kit (SBH-ACCESSORIES - stock code 98792) 5 x Sungrow SBH 5.0kW High Voltage LFP Modular Battery Unit (SBH5.0 - stock



And ultra-modern. In total, the system brings up to 265 kW (360 PS) 1 onto the asphalt via the rear axle. 1 Details of the measuring method of the specified values can 641 km. The optimised battery management system protects the components and increases their service life. 1 Gross battery capacity. 800V architecture. As with the Taycan



Hai Brunei! NETA AUTO is a 100% electric vehicle manufacturer from China, founded in 2014. With the vision of allowing people to own quality electric cars and advanced innovation equally. NETA X. Spacious, Comfortable, Family. Learn More. NETA AYA. Uplift Your Journey. Learn More. NETA V. Electrify Bruneian Journeys.



Schneider Electric USA. GVSUPS25KR0B5FS - Galaxy VS UPS 25kW 208V with N+1 power module, for 5 smart modular 9Ah battery strings, Start-up 5x8. EcoStruxure Service Plan Safety Services Service Plans for Data Centers UPS Battery Replacement Australia Bangladesh Brunei Cambodia China Fiji, Tonga French Polynesia Hong Kong, China India



Met deze Bliq thuisbatterij van 25 kWh (met 8 kW 3-fase ingebouwde omvormer) bespaar je direct op je energierekening. Jij kiest zelf waarvoor je je thuisbatterij gaat inzetten met Bliq Powerflow. Dit kan bijvoorbeeld door met elektriciteit te ???



Tesla Cell Tap Board - Suitable for use with the Tesla 5.3kW Battery. Regular price \$37 View. Tesla Module Jumper Busbar. Regular price \$58 View. CALB 72Ah Battery. Regular price \$ kW Peak: 95 @ 125V: kW Continuous: 38 @ 3,300 RPM: RPM Peak: 8,000: Torque: 173 lbs.-ft @ 0 RPM: Regen: Yes, Tailorable: Motor Diameter: 8.66" Motor Length: 13.

