

What does BTE renewables do?

Read the mobile-friendly magazine [here](#). At BTE Renewables (BTE), sustainability is at the heart of decision-making while contributing clean energy to African economies by delivering 284MW and 100MW into South African and Kenyan grids, respectively.

What is Eswatini's energy revolution?

Eswatini's energy revolution is a testament to its dedication to sustainability and self-sufficiency. As Eswatini strides into the future with renewable energy, the convergence of local innovation, international collaboration and growth-oriented policies promises to illuminate every corner of the nation.

Where can I find information about BTE renewables?

This information is available in the PitchBook Platform. To explore BTE Renewables's full profile, request access. You're viewing 2 of 6 executive team members. Get the full list » You're viewing 5 of 10 board members. Get the full list » This information is available in the PitchBook Platform.

Is Eswatini a sustainable country?

A nation that has long relied on neighboring South Africa and Mozambique for unsustainable fossil fuel-based electricity imports, renewable energy in Eswatini is quickly diversifying. The transformative journey culminated at the COP26 conference, where Eswatini committed to an ambitious 50% surge in renewable energy production by 2030.

What is the main energy source in Eswatini?

Hydroelectric power currently stands as one of the most prominent energy sources in Eswatini. The EEC operates four hydropower plants, constituting 15% of the country's electricity production and plans to bolster the existing infrastructure.

Can a wind turbine be installed in Eswatini?

While wind energy production in Eswatini is negligible, the country's mountainous regions hold immense potential for installing wind turbines. Government feasibility studies in the Lubombo Plateau, a largely uninhabited and undeveloped region near the border with Mozambique, are ongoing.



BTE Renewables is a 100% Actis-owned renewable energy platform targeting the pan-African region. It currently has a portfolio of six utility-scale projects, spread across wind and solar developments in South Africa and Kenya. The business currently has an operating portfolio of 473MW, with plans to expand further.



Nuclear said: " The acquisition of BTE is bringing to ENGIE high-quality wind and solar assets and a strong project pipeline. We are looking forward to welcoming the BTE team within the Group. The integration of BTE will also contribute to South ???



Exxaro and Actis declined to comment about the potential deal. Thungela said its renewable energy plan was currently limited to a solar plant at the eMalahleni water reclamation plant, studies for solar at its Zibulo Colliery and a renewable energy solution at its Elders complex. It said it was not considering a bid for BTE.



??? Addition of 340 MW renewable energy capacity and a portfolio of more than 3 GW of advanced development projects for ENGIE in South Africa
ENGIE and Meridiam signed a Sales and Purchase Agreement with ACTIS on the full scope of BTE Renewables, a developer, owner and operator of renewable assets on the African continent, with an operating



Social Performance Co-ordinator at BTE Renewables ? Experience: BTE Renewables ? Education: Namaqualand Tvet College ? Location: Pofadder ? 45 connections on LinkedIn. View Jeremy Prins" profile on LinkedIn, a professional community of 1 billion members.



In its Energy Masterplan 2034, the Kingdom of Eswatini identified renewable energy as the driving force behind the country's energy transformation, highlighting sustainable energy as a priority area for development in the ???



the renewable energy space. Eswatini imports approximately 70% to 80% of its electricity from ESKOM, Electricidade de Moçambique (EDM), and the Southern African Power Pool (SAPP) trading platforms. Local electricity generation is mostly renewable energy. The local generation mix is dominated by biomass (bagasse at sugar mills) with



la totalité des activités de BTE Renewables, un développeur, propriétaire et opérateur d'actifs renouvelables sur le continent africain, qui opère en Afrique du Sud et au Kenya. L'accord comprend une cession des actifs kenyans par ENGIE ? Meridiam ? la clôture de l'opération.



Africa PV News Snippets. Jun 22, 2023. Actis offloads African renewables platform BTE Renewables to Engie and Meridiam; Yellow raises \$14 million Series B funding to expand business and product offerings; GEAPP and CHD pool in resources for DRE in Nigeria through a new local currency subordinated debt vehicle.



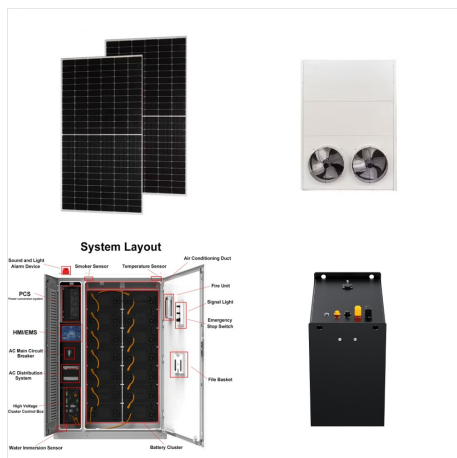
Our Private Sector Partners include a range of players across the power delivery value chain that are helping sub-Saharan African nations meet these ambitious goals. We are constantly adding new partners who demonstrate an ability to ???



BTE Renewables General Information Description. Operator of a renewable energy company intended to deliver utility-scale wind and solar projects across Africa. The company develops, acquires, owns and operates waste-to-energy, renewable energy and energy efficiency projects in the sub-utility megawatts, thereby ensuring long-term value creation for all stakeholders.



According to the announcement, the bid is tied to the Balekane and the Ngwenya photovoltaic (PV) projects, each with 15 MW of capacity. The solar projects are located on separate parcels of private land in North Western Eswatini, in the Hhohho region.



? Experience: BTE Renewables has been acquired by ENGIE Africa ? Education: Wits Business School ? Location: City of Johannesburg ? 195 connections on LinkedIn. View Zandile Deliwe's profile on LinkedIn, a professional community of 1 billion members. Lesotho & eSwatini Just an hour left before you can join the webinar on



The country window, which started in April 2022 and was officially launched in October 2022, built on the services of the broader GET vest programme and tailored them to the Eswatini context to bolster the country's renewable energy sector. GET vest Eswatini significantly strengthened Eswatini's renewable energy market and mobilised



In its Energy Masterplan 2034, the Kingdom of Eswatini identified renewable energy as the driving force behind the country's energy transformation, highlighting sustainable energy as a priority area for development in the Kingdom. In 2018, Eswatini, with support from the UN, developed the Programme Framework for Affordable Renewable Energy



View contacts for BTE Renewables to access new leads and connect with decision-makers. View All Contacts . Details. Edit Details Section. Industries . Energy . Renewable Energy . Solar . Headquarters Regions Europe, Middle East, and Africa (EMEA) Operating Status Closed; Company Type For Profit;



The ministry of natural resources and energy confirmed that the Eswatini Energy Regulatory Authority (ESERA) has recently issued an intention to award three 15-MW solar projects to a consortium of Globeleq and Sturdee Energy Southern Africa, as well as ACED.



Eswatini lacks a formalised land ownership structure but does provide perceived security of tenure with access to landholdings through traditional land governance. Eswatini is a predominantly rural country, with 76.8% of its population in 2019 living in rural agglomerations/clusters throughout the countryside, making it the eighth most rural state in ???



In the heart of the Southern African plains lies Eswatini, a small landlocked country formerly known as Swaziland. A nation that has long relied on neighboring South Africa and Mozambique for unsustainable fossil fuel-based electricity imports, renewable energy in Eswatini is quickly diversifying. The transformative journey culminated at the COP26 ???



Actis has agreed to sell BTE Renewables ("BTE") to Engie and Meridiam, at a total enterprise value of US\$1bn; BTE is the second largest renewables player in Africa after Lekela Power, which Actis sold in March this year; Actis, a leading global investor in sustainable infrastructure, has agreed to sell 100% of BTE Renewables to Engie and



O& M Supervisor at BTE Renewables ? A mature, innovative, and committed professional, with a passion for sustainable development in the world we live in today. A reliable professional who is committed to providing performance of the highest possible standards. ? Experience: BTE Renewables ? Education: Central University of Technology, Free State ? Location: Bedford ? ???



This two-day event, a Team Europe effort organised in partnership with European institutions, GIZ and its platforms ??? GETinvest and GETtransform as well as the Government of Eswatini, Business Eswatini and the Renewable Energy Association of Eswatini, brought together experts, policymakers, and stakeholders to discuss and strategise on ???



The Kingdom of Eswatini, formerly known as Swaziland, is seeking proposals for the deployment of 40 MW of solar photovoltaic (PV) capacity as part of the country's efforts to cut its reliance on imported power. Renewables Now is a leading business news source for renewable energy professionals globally. Trust us for comprehensive coverage