

Who is C3M power systems?

C3M Power Systems was founded in 2014 as part of strategic efforts to grow the company's civil capabilities. C3M self-performs the construction, reconstruction, and maintenance of electrical systems, primarily in the transportation market.

What does C3M Power Systems do?

C3M Power Systems installs and maintains the power and systems that support the country's complex infrastructure, allowing power and water to flow, and cars, planes and trains to reach their destinations. From railways to airports to highways, C3M is involved in ensuring the smooth operation of the infrastructure. Last week, we celebrated #NationalTradesmenDay!

Which organizations does C3M participate in?

C3M participates in the Design-Build Institute of America (DBIA), Washington Building Congress (WBC), Washington Area Railway Engineering Society (W.A.R.E.S.), American Public Works Association (APWA), and Institute of Electrical and Electronics Engineers (IEEE).



And since these structures often occupy pedestrian-friendly, highly visible public sites, C3M is sure to perform its work while minimizing construction impacts to the local community, working closely with project stakeholders to establish safe and secure worksites and minimizing noise and dust in the area.



marks C3M's 10th anniversary! To celebrate this milestone, we are highlighting some of the talented individuals who make up our team. Meet Jarvis Pratt, a superintendent currently working on the WMATA Electrician Labor Services project.& nbsp;



Signage, lighting, communications systems and baggage handling systems keep people and luggage moving quickly through airports. C3M's experience performing this work in major airports ensures that this work is completed with minimal impact to ???



C3M will install the electrical and communications systems for a new maintenance building at the Maryland Area Regional Commuter Riverside Railroad Yard for MARC (Maryland Area Rail Commuter). The electrical scope of work includes a medium voltage switchgear, a 2000KVA transformer to support permanent power, as well as lighting and lighting



C3M, in joint venture with Cupertino Electric, is constructing a new traction power facility at the Walnut Creek Station in Walnut Creek, California. The scope of work includes: Demolition of all existing pavement, concrete curbs, gutters, concrete walls, and fencing,



Learn more about C3M Power Systems and the electrical construction projects they've delivered. C3M, a subsidiary of Clark Construction, is a specialty contractor that's delivering some of the ???



C3M recently began work on its largest contract to date???a \$59-million systems upgrade project that will allow the transit system to accommodate 8-car trains on their Blue Line through electrical upgrades at 7 tie breaker stations and 25 traction power substations. C3M's prolific experience with mass transit electrical systems enables their



The Plane Train Tunnel West Extension project at Hartsfield-Jackson Atlanta International Airport in Atlanta, Georgia will extend the existing tunnel about 600 feet underneath the airport MARTA station and SkyTrain airport station, allowing more room for trains to turn back to go in the other direction while another train arrives to reduce wait times for the train and increase capacity.



Access C3M Power Systems, LLC Executive Summary Report of Active Projects, Projects Currently Bidding and Key Contacts. Win more business with Construction Journal. Try it Free. C3M Power Systems, LLC. Executive Summary. Active Projects. Eastridge to BART Regional Connector: Capitol Light Rail Project



C3M Clark Cupertino is installing two new traction power substations at the Civic Center and Montgomery Street passenger stations. The scope of work includes structural, architectural, utility, and mechanical modifications to the facilities including demolishing portions of the concourse levels at both stations.



C3M provided new pathways for four circuits and controls for two new air compressors, an air dryer, a nitrogen generator, and a nitrogen receiver at Fort Meade Nitrogen Generation System in Fort Meade, Maryland.



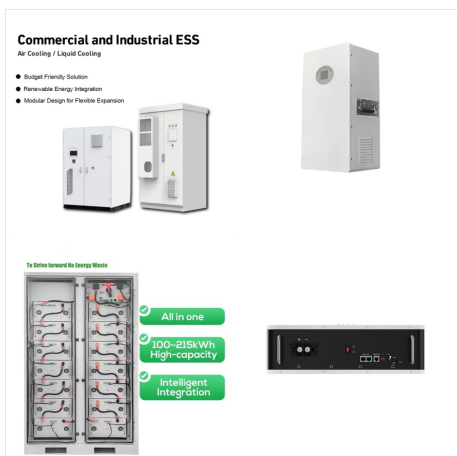
To execute the work, C3M demonstrated its expertise with the traction power system, equipment, and site conditions, going above and beyond by actively assisting with troubleshooting, system re-design, advising, and coordination.



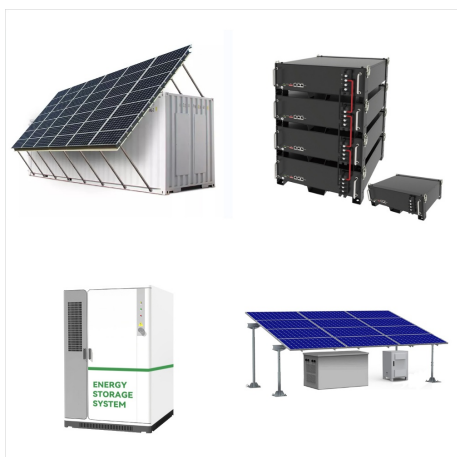
In conjunction with this contract to upgrade WMATA Traction Power Systems on the Red, Green, and Orange metro train lines in the Washington, DC area, C3M will install electrical equipment at five tie breaker stations and eleven traction power substations to accommodate the additional power capacity required for the 100% 8-Car Train and State of Good Repair programs.



In addition, C3M is installing electrical power distribution, lighting, and receptacles, controls for tunnel ventilation and drainage pumping systems, and security fiber optic cabling. The first tunnel was completed in December 2016, a month ahead of schedule, and CSX moved the first train through the structure on December 23rd.



C3M will install all electrical, communication, and control systems and instrumentation for a 7,800-square-foot sanitary wastewater facility that will support the infrastructure requirements of Virginia Tech's new Innovation Station campus.



Legal Name C3M Power Systems LLC. Company Type For Profit; Contact Email info@c3mpowersystems ; Phone Number +1 240 716 7100; C3M Power Systems is a construction, reconstruction, and maintenance of electrical systems for the transportation market. Their capabilities include electrical, traction power, overhead catenary, communications and



These tasks include replacement of 1000 KCMIL DC positive and negative traction power cable, replacement of automatic train control cable, and installation of new emergency trip station (ETS) system including cabling and equipment, installation of new radio communications cable, installation of new fiber optic cable, and ancillary system



C3M Power Systems, a subsidiary of Clark Construction Group, LLC, is a leading electrical construction company based in Capitol Heights, MD. They specialize in delivering high-quality electrical projects that support the nation's infrastructure, including railways, airports, ???



Please give this contact information to C3M Power Systems LLC when sending the message. I would like to request the following information be added/sent to me from C3M Power Systems LLC: More info about your company. Your Diversity Classifications. Information about a ???



The C3M project team installed the rail systems for the project, a 3.6-mile-loop connecting key communities in the city's urban core. The project included the installation of approximately 3.6 miles of embedded single track on which a fleet of up to 5 modern streetcar vehicles operate in mixed traffic in one direction serving 18 station stops.



C3M will install a TPSS, switchgear, transformer, and emergency backup generator in the Division 20 rail yard which serves both the Red and Purple lines of LACMTA's Metro Rail system. The 140" x 25" six-section, prefabricated TPSS will be one of ???



Kevin joined C3M Power Systems as part of its founding team in 2014 as a senior project manager on the WMATA Orange and Blue Line and K-Line Rehabilitation projects. Throughout his tenure he had played a key role on several transit projects across the country including the I-395 Express Lanes, Oklahoma City Streetcar, and numerous WMATA



C3M is responsible for supplying and installing electrical equipment at 7 Tie-Breaker Stations (TBS) and 7 Traction Power Sub-Stations (TPSS) on the Metrorail system's Blue Line for the Washington Metropolitan Area Transit Authority (WMATA) in ???