

What are the components of a 12V solar charging system?

Basic Components of a 12V Solar Charging System A basic photovoltaic (PV) solar electric panel system for 12V battery charging comprises a solar panel connected to a charge controller, connected in turn to the battery. PV Solar panels The amount of power that a PV solar panel provides is indicated by the wattage (W).

How do you charge a 12V battery?

In addition to solar panels, you can also charge your 12V battery through grid power and alternators. But the other two ways will not be as economical as solar panels which offer access to clean and free solar power. What are amp hours? Deep cycle batteries have a specific amp hour rating.

Should a 10W solar panel be connected to a 12V battery?

You could connect a 10W panel directly to a 12V water pump or fan, but then it would shut off as soon as it wasn't getting enough power. Therefore, it makes more sense to have the solar panel connected to a 12V battery. Now, let's compare and review the best 10-watt solar panels available. If you have questions, please leave a comment.

Can You charge a 100Ah battery with a 10W panel?

So if you're planning on charging a 100Ah battery with a 10W panel, then you should use a solar charge controller. This applies to batteries under 100Ah as well. You could connect a 10W panel directly to a 12V water pump or fan, but then it would shut off as soon as it wasn't getting enough power.

Can a 10W panel charge a 12V battery?

A 21.6V VOC rating is also pretty standard for a 12V panel. Newpowa ships their 10W panel with no connectors, but bare wires, which is great if you're going to use it to charge a 12V battery, but also if you plan on wiring it straight to a 12V accessory. Bare wires also make it easy to install whatever connectors you would like.

How many solar panels do you need to charge a battery?

Based on the earlier calculation, a 100 watt panel will produce an average of about 30 amp-hours per day (based on an average sunny day). This means you would need three 100 watt solar panels or one 300 watt

CAN A 10W SOLAR PANEL CHARGE A 12V BATTERY



panel to fully recharge your battery on the average day. How long will it take to charge a battery?



A 10W solar panel can produce around 8.3 amps of power. This is enough to charge a small device or to power a few lights. Solar panels are not very efficient, so this is about the most power that you can expect from a 10W panel. A 10-watt solar panel can charge a 12-volt battery if the conditions are ideal. The amount of power that the



What Size Solar Panel Do I Need to Charge a 12V Battery? A 100W solar panel (left) next to a 5W solar panel. Both are 12V solar panels and both can charge a 12V battery. But the 100W panel can output up to 20 times the power of the 5W panel, so it will charge a 12V battery much faster. Short answer: Use the calculator at the top of this page.



10W: Battery Type Compatibility: 12V: Panel Type: Monocrystalline Solar Cells: Lead Length: 3m: Supplied With: Battery Clamps & 12V DC Plug: Product Size (mm) 230 x 364 x 18mm: Compare with similar products. Efficient Solar Panel Battery Charger. Modern vehicles have a small but constant battery drain. They are packed full of electrical

CAN A 10W SOLAR PANEL CHARGE A 12V BATTERY



When charging a battery with a solar panel, the battery capacity, usually measured in ampere-hours (Ah), indicates how long the battery can supply power and how much solar energy it can absorb. To calculate the watt-hours (Wh) needed for a full charge, multiply the battery's Ah capacity by its nominal voltage (12V):



Maximize battery life with a 10W Solar Panel Kit featuring high-efficiency polycrystalline A+ solar cells for up to 30% conversion efficiency. Equipped with an 8A controller ensuring smart, safe charging with short circuit, overcharge, and reverse polarity battery connection protection. Yes, a single solar panel can charge two 12V RV

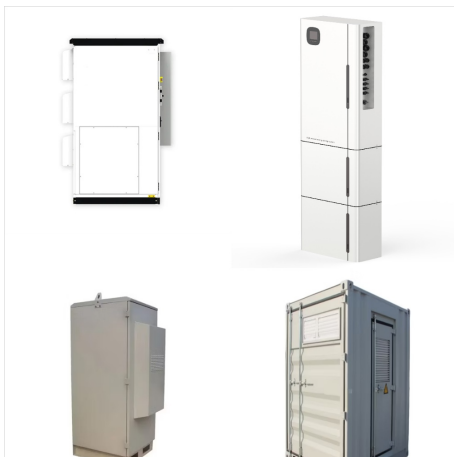


Plug-and-Play Solar 12V battery trickle charger. Easy to use DC adaptors for direct battery connection (cig lighter, alligator clips, ring terminal, SAE connection) Small Tilt Mount For Renogy 10W/20W/30W Solar Panels \$16.99. \$19.99 Save \$17.00. Battery Temperature Sensor for DC to DC on-board Battery Charger

CAN A 10W SOLAR PANEL CHARGE A 12V BATTERY



That means that a 100W solar panel can fully charge a 100Ah 12V lithium battery in a bit more than 2 days (10.8 peak sun hours, or 2 days, 3 hours, and 50 minutes, to be exact). Here is a glimpse at what size solar panel you need to ???



The OYMSAE 10W 12V Solar Panel Car Battery Charger is ideal for both charging and maintaining 12V batteries. Whether you need to charge your car battery, boat battery, RV battery, or even your motorcycle battery, this charger is versatile enough to handle it all. With its plug-and-play SAE cable kit, you can easily connect it to your vehicle



Buy ECO-WORTHY 12V Solar Panel 10W Solar Panel Battery Charger Portable for Vehicle Gate Opener Electrical Fence Chicken Coop Lawn Tractor Boat: Solar Panels - Amazon FREE DELIVERY possible on eligible purchases ACOPOWER HY010-12M 10 Watt 10W Mono Solar Panel for 12V Battery Charging RV Boat, Off Grid. 4.5 out of 5 stars

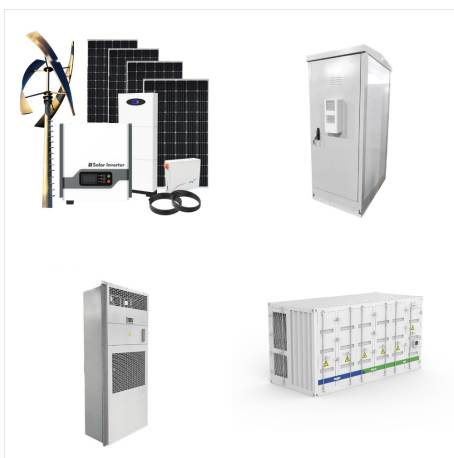
CAN A 10W SOLAR PANEL CHARGE A 12V BATTERY



Keep a battery powered with Renogy's 10W solar panel battery maintainer trickle charger. Designed for boats, SUVs, RVs, electric fences and more, it changes solar energy into 12V DC current for a stable battery level. It offers easy-to-use DC adaptors for a direct battery connection.



That's it! You're now successfully charging your AGM battery using a solar panel. Frequently Asked Questions and Answers ??? FAQs How long does it take to charge an AGM battery with solar? To fully charge a 100-amp hours solar AGM battery that's 50% discharged, use a 10-amp AGM battery charger for 6 hours or a 20-amp charger for 3 hours.



? Discover how to efficiently charge a 12V 7Ah battery with a solar panel in this comprehensive guide. Learn about the benefits of solar energy for camping, emergencies, and daily use. Explore battery specifications, solar panel types, and the photovoltaic effect. Follow a step-by-step process for optimal setup, safety tips, and maintenance advice to maximize your ???

CAN A 10W SOLAR PANEL CHARGE A 12V BATTERY



The charging efficiency of a 10W solar panel for a 12V battery refers to how effectively the panel converts sunlight into electrical energy that can be stored in the battery. Efficiency is typically expressed as a percentage of the ???



Amazon : Topsolar 10 Watt 12 Volt Solar Trickle Charger 10W 12V Solar Panel Car Battery Charger Portable Solar Battery Maintainer for Car Motorcycle Boat Marine RV + Cigarette Lighter Plug Alligator Clip : Patio, Lawn & Garden



Effortless Charging. The highly efficient solar panel can charge and maintain a 12V lead-acid battery in daylight conditions. Smart Controller. The built-in MPPT charge controller ensures a safe and efficient charging process with a smart 3-stage charging algorithm.

CAN A 10W SOLAR PANEL CHARGE A 12V BATTERY



Here I have a question about this DIY package, To my understanding, to charge a 12V battery, the output DC voltage of solar charge controller should be higher than 12V. But the solar charge controller's rated current is: 10A / 20A / 30A / 40A / 50A / 60A. According to the wattage(10W) the solar panel can generate, the solar charge controller's



10W Solar Panel: This kit comes with a waterproof high efficiency 10W solar panel which is perfect for permanent outdoor use to provide free power for charging a 12V battery to then power various devices for many applications (e.g. 12V lights, fan, small water pump, electric fence etc), or for trickle charging a larger battery to maintain its



You need around 40 watts of solar panels to charge a 12V 20ah lead-acid battery from 50% depth of discharge in 4 peak sun hours with an MPPT charge controller. You need around 70 watts of solar panels to charge a 12V 20ah Lithium (LiFePO4) battery from 100% depth of discharge in 4 peak sun hours with an MPPT charge controller.

CAN A 10W SOLAR PANEL CHARGE A 12V BATTERY



? Selecting the right solar panel size for trickle charging a 12V battery ensures efficient charging and prolongs battery life. Here's a breakdown of common sizes and advice to find what fits your needs best. Common Sizes for Trickle Charging. Standard solar panel sizes for trickle charging a 12V battery generally range from 10W to 50W.



? Key Takeaways. Select the Right Wattage: For efficient charging, choose solar panels with sufficient wattage that generally meets or exceeds your 12-volt battery's needs, ???



Solar panels can charge 12V batteries, providing a consistent and reliable power source. Charging a 12V battery with solar panels is a straightforward process. Steps to Charge a 12V Battery .

$10W \times 4h = 40Wh$. $100W \times 1h = 100Wh$.

$50W \times 24h = 1200Wh$. Total:

$40Wh + 100Wh + 1200Wh = 1340Wh$. This total is the amount of energy you need per day.

CAN A 10W SOLAR PANEL CHARGE A 12V BATTERY



Amazon : Topsolar 10 Watt 12 Volt Solar Trickle Charger 10W 12V Solar Panel Car Battery Charger Portable Solar Battery Maintainer for Car Motorcycle Boat Marine RV + Cigarette Lighter Plug Alligator Clip : Patio, Lawn & Garden



ECO-WORTHY this 10W 12V Monocrystalline Solar Panel widely used on small dry camp and off-grid lighting applications. Waterproof IP-65 Rated Junction Box. Advanced water and dust proof level (complete protection against ???



Finally, the calculator divides the total energy that the battery can store by the amount of energy that the solar panel can generate per hour to determine how long it will take the solar panel to fully charge the battery from 0% to 100%. The result, rounded to two decimal places, is displayed to the user in the format "The solar panel will

CAN A 10W SOLAR PANEL CHARGE A 12V BATTERY



Like I said, you just built a solar 12V battery charger. You connected a solar panel to a battery via a charge controller. And the solar panel is now charging that battery. Using what you just learned, you can build even more ???



ECO-WORTHY this 10W 12V Monocrystalline Solar Panel widely used on small dry camp and off-grid lighting applications. Waterproof IP-65 Rated Junction Box. Advanced water and dust proof level (complete protection against environmental particles and low pressure water jets). Pre-drilled holes on the back of the panel allow for fast mounting and securing. Corrosion-resistant ???