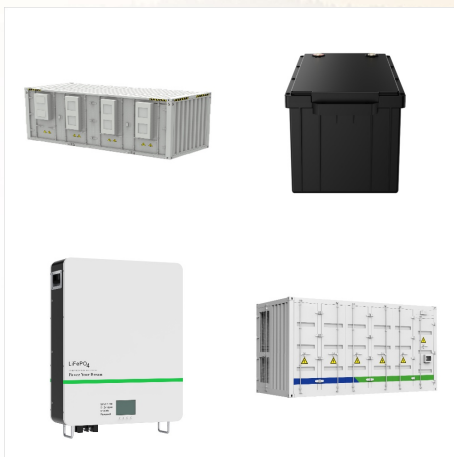


Welcome to the Lethal Company subreddit! We're a community centered around the popular horror co-op game, Lethal Company! I've played with a group and it's fun, but more often than not I play solo and I enjoy it more. I haven't played on the harder 3 moons solo yet (I think I've only played Rend in a group actually) and I'm kind

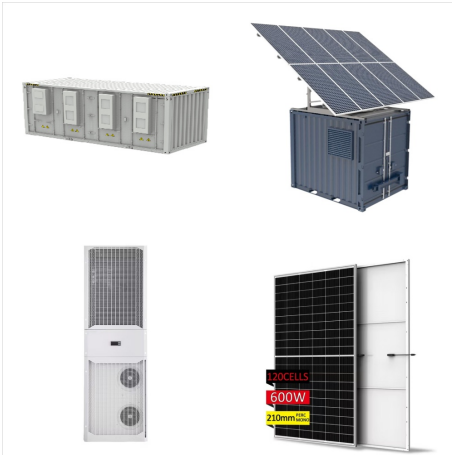


Yes, you can play Lethal Company solo, but be prepared for a tough ride. This game is designed with teamwork in mind, precisely four players, where players collaborate and communicate to scavenge scrap while avoiding nightmarish creatures.



Any tips for playing solo? Question New player, anti social and introverted, love the game but does anyone have any tips to make it easier? Also there is the Unofficial lethal company community where people join to play lethal company and meet each other. They are very friendly and they don't care if you are new, they just love a good time!

# CAN I PLAY LETHAL COMPANY SOLO



Lethal Company. All Discussions Screenshots Artwork Broadcasts Videos News Guides Reviews But as a solo you can join randoms, and I only had fun games doing this. You only need to be able to speak english and it will be fine. I still play with randoms despite my friends picking up the game after I recommended it. So yeah, you should



I reccomend the "Lethal Company Enhancer" mod for solo play, you can setup it to have sightly longer days, more days for reaching quota and most importantly not loosing scrap stored on ship on death/auto-pilot departure. Don't forget to ???



If you decide to take the risk and play on an eclipsed moon in Lethal Company, these tips will help you succeed. Indie Games. Lethal Company. Running solo in Lethal Company is downright dangerous, but here's a few tips ???

# CAN I PLAY LETHAL COMPANY SOLO



Il est possible de jouer solo ? Lethal Company. La tendance autour de Lethal Company est ? son maximum, et de nombreux joueurs ont projet? la production au sommet des charts. Certains d?cident



Welcome to the Lethal Company subreddit! We're a community centered around the popular horror co-op game, Lethal Company! Quality of life mods i would recommend both for solo play and multiplayer (most solo mods from above are sort of QoL mods at the same time, e.g. BetterStamina): ShipLoot v1.0.0 by tinyhoot. HealthMetrics v1.0.2 by matsuura.



If you are not excited to play this game in its current state, then you should wait to see if the game progresses further in development. Learn more "At this stage I'm confident you will have a good time with Lethal Company. But there are still many ideas and features I have in mind. I also need your feedback to help tune the game's

# CAN I PLAY LETHAL COMPANY SOLO



Solo can give you a rough time, since you have to move scrap alone, can't use the radar in the ship to detect enemies in the facilities, and dying means you lose all your scrap instantly as there is no one left to start up the ship with the scrap. I really don't recommend solo, but if you like a punishing challenge, then feel free to dive in



Lethal Company. All Discussions Screenshots Artwork Broadcasts Videos News Guides Reviews Solo If i dont have any friends to play with can i play solo? Is there a way to play with randoms or friend only? < > Showing 1-3 of 3 comments . Ska Bloodtail. Nov 14, 2023 @ 7:44am When you start up, you go to "Host Game" you'll see an option to



It can be played solo, yes. However it's very punishing, little is done to balance the game around solo play; it's all balanced around 4 players. Dying at any point will instantly mean the loss of every piece of scrap you've found so far, dying on Day 3 of a quota cycle may as well be an instant game over.

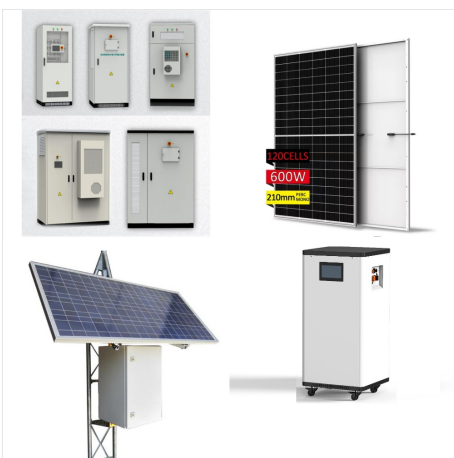
# CAN I PLAY LETHAL COMPANY SOLO



You absolutely can play Lethal Company solo. To do this, you need to start a LAN game followed and confirm it so that you can host it. There are only two choices of launch: Online and LAN. Since no one else is in a LAN party with you, you'll be playing by yourself. Just start the game, and you'll find yourself alone on the ship.



The first fully customizable client-sided Minimap mod for Lethal Company. All configurations can be managed via a user-friendly in-game GUI. Icons, such as enemies or loots, can be hidden from the map. Suitable for both solo and co-op players! Additional graphics settings such as resolution, anti-aliasing, fog quality etc.



Graphics make all the difference to the gameplay, and the HD Lethal Company mod adds antialiasing, enhances the resolution, and eliminates most of the pixelated, jagged edges in the base game. This mod is perfect for players who want to experience the horrors of Lethal Company in a more HD version.



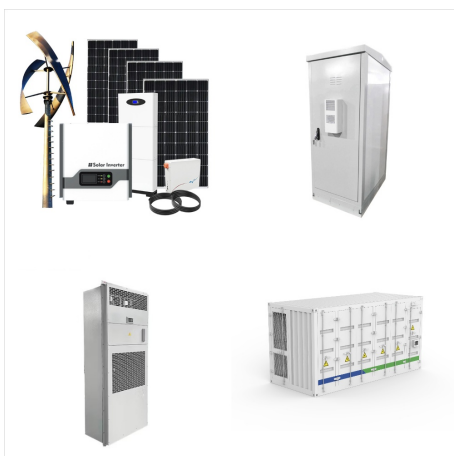
# CAN I PLAY LETHAL COMPANY SOLO



Lethal Company. All Discussions it can definitely be played solo, but the intended experience is playing with multiple people (ideally 4). i've had good experiences playing with 3 people total; 4 just smooths it out. i have done a couple runs trying to play solo and i'd call it a self-imposed hard mode. if you die, it's over, so you have to



Lethal Company. All Discussions Screenshots Artwork Broadcasts Videos News Guides Reviews You can play solo, but it will be difficult. You can always hop on some other peoples public games and make some new friends. #2. Dragontoast. Nov 13, 2023 @ 1:22pm Random players is fun but the player etiquette has started shifting downhill recently.



Lethal Company. All Discussions Screenshots Artwork Broadcasts Videos News Guides Reviews I play solo, but the game should be played with a group. You get an allotted quota when you start, 1st day is 130. Go to a moon, get scrap equivalent of quota. A day passes every time you launch the ship off a moon. And generally have 3 days to meet a

# CAN I PLAY LETHAL COMPANY SOLO



Lethal Company est un jeu o? l'entraide et le travail d"?quipe sont primordiaux. Si le jeu est jouable ? 4, certains souhaitent pouvoir y jouer avec encore plus d'amis et c'est possible avec certain mod.Pourtant, certains joueurs recherchent l'aventure en solitaire, acceptant le d?fi de naviguer seuls dans l'espace hostile.



Lethal Company. All Discussions Screenshots Artwork Broadcasts Videos News Guides Reviews if you absolutely refuse to play with others, then you can play solo and it'll just get difficult much faster. #2. NeonBaron. Nov 11, 2023 @ 11:33am Originally posted by



I know that snare fleas will let you go if you stop moving (They'll let you go even if you keep moving, as long as you have enough health) in solo, while in multiplayer you can only shovel it or leave the building, and was wondering how many other differences there are for solo. One difference I think might exist, but am not sure about, is enemies opening doors faster in ???