

Can a solar shed be used for a roof?

A solar shed can be used for that. If you know your "why" for a solar shed, you can move on to specifics. The first question is how many solar panels do you need for the roof of your shed. Consider that the average solar panel is 5' x 3'.

Should I put solar panels on my Shed?

Putting solar panels on your shed has its pros and cons. While it's less expensive than a full rooftop solar system on your house, it might be less economical in the long run. Other factors to weigh are the size, condition, and location of your shed--as well as why you want your shed to run on solar energy in the first place.

How do you install solar panels on a shed roof?

Run connecting wires throughout the shed. The wire allows you to distribute power throughout the shed. Install the solar panel array. For a permanent installation on a shed roof, rigid solar panels are likely your best bet. Portable solar panels give you more flexibility to move the panels easily.

How do you use solar power in a shed?

Run wiring throughout your shed so that you can plug devices into the shed and access the solar power you're creating. Install solar panels on the roof of the shed. Set up a portable power station to collect and store the excess energy the solar panels create so that you can use solar power even when the sun goes down.

Are solar panels a good investment for a shed?

Solar panels and a portable power station to convert and store the sunlight you harvest can represent a significant up-front investment, depending on the size and location of your shed. But in the long run, you can benefit significantly from installing a solar panel system for your shed.

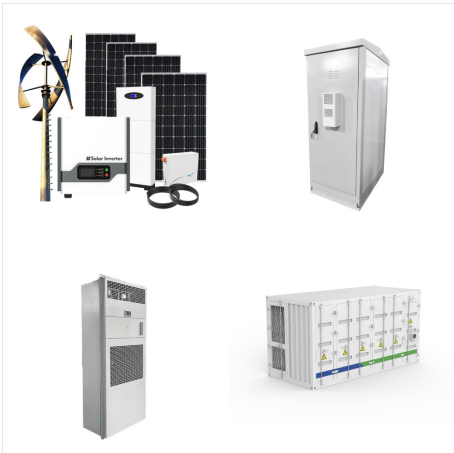
Is a Solar Shed a good choice?

Even if your shed can't hold enough panels to power your entire property, it can still be an excellent choice to decrease your overall electricity usage or supplement an existing solar array on your home's roof. You can get competing quotes for solar sheds and other types of installations by joining the EnergySage Solar

CAN SOLAR PANELS BE INSTALLED ON A SHED ROOF



Marketplace.



They can evaluate your shed roof's suitability for solar panel installation and help you choose the most suitable panels for your requirements. By considering the different types of solar panels available and evaluating the factors mentioned above, you can make an informed decision when selecting the right solar panels for your shed roof.



3. What direction are solar panels installed on a roof? Solar panels are usually installed facing south in the Northern Hemisphere to maximize sunlight exposure throughout the day. If you have east or west-facing solar panels, they can also be effective, but then there should not be any large trees or buildings obstructing the sunlight. Conclusion



Install the solar panels on the roof or in the yard. Drill a hole and add a waterproof connector called an entry panel, which protects the cables between the solar panel and the power center. Make the connections between ???

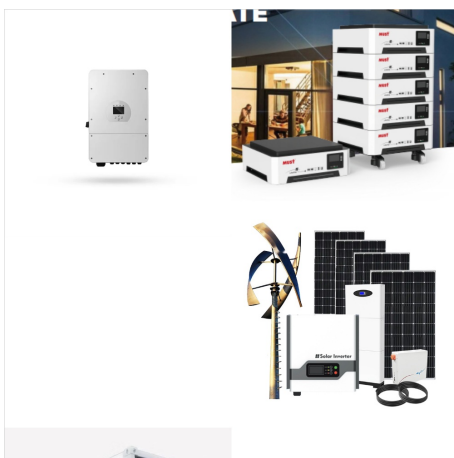
CAN SOLAR PANELS BE INSTALLED ON A SHED ROOF



Yes, solar panels can be installed on a shed roof but the installation technique may be slightly different. This is both a feasible and smart choice for property owners looking to harness renewable energy. By placing solar panels on your shed, you can power tools and lighting, and even supplement your home's electricity.



Here are some of our favorite ways to install solar panels besides on the roof. Solar Panels Installed on the Ground. Is your home's roof oriented in a poor direction for solar? Does it get too much shade? Then ground-mounted arrays can be much more productive. Find me local solar pros. Solar Panels Installed on a Shed or Garage.



A 4m2 to 5m2 shed can potentially hold a 750W to 1kW solar panel system while a 12m2 shed can house a 3kW system.; It can cost between ?2,000 to ?6,000 to install solar panels on a shed roof.; If you have the right materials and space, most solar panels for sheds can power your lighting and shed appliances or provide a charging station for electric vehicles.

CAN SOLAR PANELS BE INSTALLED ON A SHED ROOF



1) I need to power a small fridge in my shed ???
can solar power this? Solar can power a fridge, yes. A small 12v fridge will be less energy intensive than a 240v one. The problem is that fridges need to run 24 hrs a day. The sun is in the sky for 12 hrs on average. And most of the time we can't see it because of the clouds.



Here is a quick look at how we installed our system, including a simple and inexpensive way to install solar panels to any roof. Installing The Solar Panels To The Roof ??? Without Spending A Fortune! Any solar power application starts of course with solar panels. Without them, nothing can ever be charged or used. We chose to use (2) 150 watt

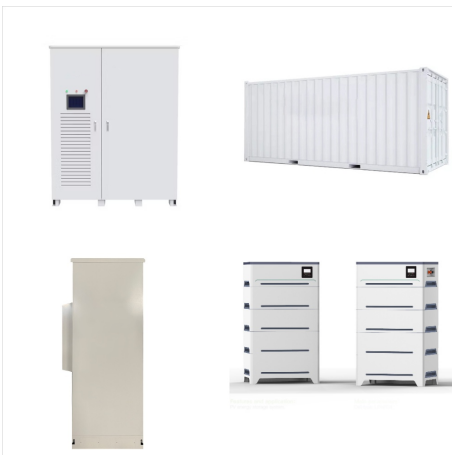


Ensure the roof or the area where you plan to install the panels is structurally sound and capable of supporting the added weight. Inspect the roof for any damage and make necessary repairs. Additionally, clear the area surrounding your shed to maximize sunlight exposure. We opted for roof-mounted solar panels as the shed's roof received

CAN SOLAR PANELS BE INSTALLED ON A SHED ROOF



The good news is that solar panels can be installed on just about any roof type, but the installation process and mounting hardware might vary from material to material. In this article, we'll explore the many kinds of roofs solar ???



Now that you've purchased the solar panels and don't want to pay thousands for installation, you can DIY install solar panels. But ensure you're versed with using a hammer, screwdriver, nail, and drill. If yes, follow the steps to mount solar panels on the roof: Step 1: Identify the Area



Installing solar panels on your roof can both save you energy costs and reduce your home's environmental impact. Even though there are some DIY solar panel options, installing them is a highly complex project, and you'll still need assistance from an experienced professional. The first step in planning your solar panel installation is

CAN SOLAR PANELS BE INSTALLED ON A SHED ROOF



Solar panels are long-term commitments, lasting 25 or more years. While this is sufficient for some, electricity needs might change over that time period for others. Whether your family is expanding or you've shifted to working full-time at home, installing solar panels on a shed roof can help supply any extra needs.



Can I put solar panels on my shed roof in the UK? This may seem like a ridiculous question considering this post is about solar panels for sheds; we've already established that it's legal to put your solar panels on your shed ???



The wire allows you to distribute power throughout the shed. Install the solar panel array. For a permanent installation on a shed roof, rigid solar panels are likely your best bet. Portable solar panels give you more flexibility to move the panels easily. Set up the portable power station or balance of system components.

CAN SOLAR PANELS BE INSTALLED ON A SHED ROOF



how to mount solar panels on shed roof. Setting up solar panels on your shed can be both fun and fruitful. To start well, look into the main aspects affecting your installation. We'll show you how to navigate every step successfully. Assessing Your Shed's Roof. You should first check your shed's roof in detail.



FYI, your shed's roof isn't the only place you can install solar panels???you can look into ground mounts, carports, or solar pergolas and gazebos. Hours of Sunlight. Time for a bit of math! If your shed needs 3,000 watts to function, a 250-watt panel can create up to 1,500 watts if there are six hours of sunlight. With a second panel, you're



Can I put solar panels on my shed roof in the UK? This may seem like a ridiculous question considering this post is about solar panels for sheds; we've already established that it's legal to put your solar panels on your shed roof in the UK. But you need to make sure your shed roof is strong enough - solar shed structure is all-important.

CAN SOLAR PANELS BE INSTALLED ON A SHED ROOF



A 4m² to 5m² shed can potentially hold a 750W to 1kW solar panel system while a 12m² shed can house a 3kW system.; It can cost between ?2,000 to ?6,000 to install solar panels on a shed roof.; If you have the right ???



The Z Brackets are used to attach the solar panels to the roof of your shed. Setting up solar panel kit for shed doesn't have to be hard or expensive. The off-grid system is a great way to keep your backyard free of clutter, maximize your storage space, and even create a safe backup power area in case of emergencies.



Orientation: Ideally, your shed roof should face south or southwest to maximise sun exposure.; Angle: The optimal tilt angle for solar panels in most regions is around 30 degrees.This angle helps maximise the amount of sunlight that the solar panels can capture and convert into energy. It is important to consider the angle when installing solar panels on a shed, as it can impact ???

CAN SOLAR PANELS BE INSTALLED ON A SHED ROOF



Install solar panels on the roof of the shed. Set up a portable power station to collect and store the excess energy the solar panels create so that you can use solar power even when the sun goes down. Install a solar connector to ensure the electricity flows properly.



Solar Panel Cost. One of the primary appeals of DIY solar panels is that you can save money. According to EnergySage, solar panels cost an average of \$29,410 for a 10-kilowatt (kW) system. Roughly half of that cost goes toward labor, overhead, margin, customer acquisition, and other costs that do not apply to a DIY solar power installation.



If you plan to install solar panels on your steel building's roof at any point in the future, you'll need to make sure the additional weight of the panels is accounted for during manufacturing. Since Worldwide Steel manufactures all our own metal building kits in-house, this is an easy process.

CAN SOLAR PANELS BE INSTALLED ON A SHED ROOF



Can Solar Panels Be Installed on a Metal Roof?

Yes, solar panels can be installed on a metal roof. Metal roofs are actually a great choice for solar panel installations, as they are more durable, have a longer lifespan, and are more resistant to extreme weather conditions than other roofing materials.



Should your shed not be suitable for solar panels, you still have other options, such as ground-mounted solar, a solar carport, or community solar. There are many ways to adopt solar energy. Investing in solar panels for your shed can supply your home with extra energy.